

Bill No. 329
2019

By-law No. S.-____-____

A by-law to lay out, constitute, establish and assume lands in the City of London as public highway. (as widening to Wychwood Park and Annadale Drive)

WHEREAS it is expedient to establish the lands hereinafter described as public highway;

NOW THEREFORE the Municipal Council of The Corporation of the City of London enacts as follows:

1. The lands and premises hereinafter described are laid out, constituted, established and assumed as public highway as widening to Wychwood Park and Annadale Drive, namely:

“Part of Lots 225, 267, 268, 269, 270 and 271 on Registered Plan 891 in the City of London and County of Middlesex, designated as Parts 2 and 3 on Reference Plan 33R-20393.”

2. This by-law comes into force and effect on the day it is passed.

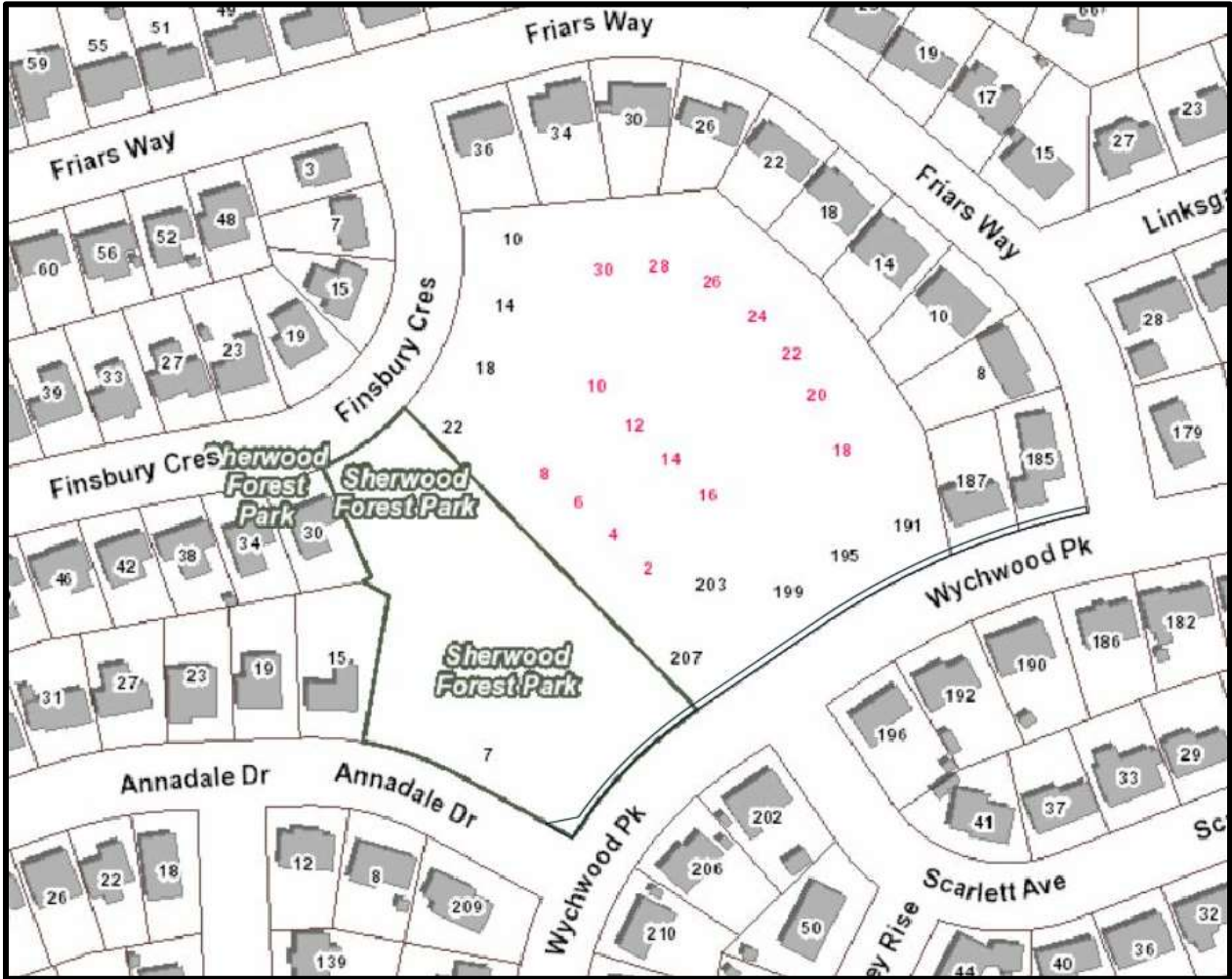
PASSED in Open Council on August 27, 2019.

Ed Holder
Mayor

Catharine Saunders
City Clerk

First Reading - August 27, 2019
Second Reading - August 27, 2019
Third Reading - August 27, 2019

Location Map



 Subject Land