

4TH REPORT OF THE
ACCESSIBILITY ADVISORY COMMITTEE

Meeting held on November 22, 2012, commencing at 3:05 p.m.

PRESENT: M. Dawthorne (Chair), R. Booth, G. Doer, L. Fluhrer, K. Lewis, K. MacDonald, L. MacDonald, P. Mutinda, B. Quesnel, K. Rusticus, B. Ryan and J. Martin (Secretary).

ALSO PRESENT: R. Campbell, K. Graham, A. Husain and J. LaJoie.

REGRETS: V. Waines.

I YOUR COMMITTEE REPORTS:

- | | |
|--|--|
| Accessibility Plan | 1. That the Accessibility Advisory Committee (ACCAC) received the <u>attached</u> presentation from J. Lajoie, Service London, with respect to the 2013-2017 Accessibility Plan; it being noted that J. Lajoie will work with the ACCAC sub-committees and report back at the January meeting with respect to this matter. |
| Education and Awareness Sub-Committee | 2. (a) That the Accessibility Advisory Committee (ACCAC) received a report dated October 31, 2012, from M. Dawthorne, on behalf of the Education and Awareness Sub-Committee; it being noted the ACCAC held a general discussion with respect to this matter. |
| TAG | 3. (b) That the Accessibility Advisory Committee (ACCAC) received the <u>attached</u> update from L. Fluhrer, with respect to the site visit of the Trails Advisory Group. |
| | 4. That the Accessibility Advisory Committee (ACCAC) received and noted the following: |
| 3rd Report of the ACCAC | (a) (1) the 3rd Report of the ACCAC from its meeting held on October 25, 2012; |
| 2nd Report of the ACCAC | (b) (2) a Municipal Council resolution adopted at its meeting held October 30, 2012 with respect to the 2nd Report of the Accessibility Advisory Committee; |
| Draft Requirements for the Design of Public Spaces | (c) (3) a Municipal Council resolution adopted at its meeting held October 30, 2012 with respect to the draft requirements for the design of public spaces; |
| Resignation of D. Wilson-MacLeod | (d) (4) a Municipal Council resolution adopted at its meeting held October 30, 2012 with respect to the resignation of D. Wilson-MacLeod from the ACCAC; |

- Resignation of A. Rinn (e) (5) a Municipal Council resolution adopted at its meeting held October 30, 2012 with respect to the resignation of A. Rinn from the ACCAC;
- Adoption of FADS Document – Corporation of the Municipality of Lambton Shores (f) (6) a communication, dated October 17, 2012, from B. Campbell, Division Manager, Facilities, with respect to the adoption of the Facilities Accessibility Design Standards (FADS) by the Corporation of the Municipality of Lambton Shores; and,
- Calendar of Events – December 2012 - January 2013 (g) (7) the Calendar of Events for December 2012 and January 2013, prepared by M. Dawthorne.
- Next Meeting 5. That the Accessibility Advisory Committee will hold its next meeting on January 31, 2013 at 3:00 p.m.

The meeting adjourned at 4:20 p.m.

City of London Accessibility Plan

2013-2017

Legislation

The Ontarians with Disabilities Act, 2001 (ODA)

- Annual Accessibility Plan

Accessibility for Ontarians with Disabilities Act, 2005 (AODA)

- Multi-Year Accessibility Plan
- Annual Status Report
- Review and Update the Plan Every 5 Years

Accessibility Plan Outline

1. A Message from the Accessibility Advisory Committee
2. About the Plan
 - Purpose and Scope
 - Review and Monitoring
 - Communication
3. Accessibility Steering Committee
 - About the Committee
 - List of members

Accessibility Plan Outline

4. Accessibility Advisory Committee
 - About the Committee
 - Members
 - Sub-Committees
 - Conference Highlights
5. Guiding Legislation
 - ODA, AODA Standards

Accessibility Plan Outline

6. Accomplishments in 2012

- Customer Service
- Information and Communications
- Employment
- Transportation
- Built Environment

Accessibility Plan Outline

7. 5-Year Plan 2013-2017

- Customer Service
- Information and Communications
- Employment
- Transportation
- Built Environment

What's Next?

- Sub-Committees Meet
- List of 2012 Achievements
- Message from ACCAC
- Jen to Compile Information and Bring Back to ACCAC
- Community and Protective Services Committee
- Council Approval

Timeline

- Sub-Committees Meet December
- List of 2012 Achievements
- Message from ACCAC
- Jen to Compile Information January
and Bring Back to ACCAC
- Community and Protective February
Services Committee
- Council Approval

Hello Accessibility Advisory Members, Jeff and Linda from TAG:

I attended the first meeting of TAG (Trails Advisory Group) on the site of Kilally ESA, on November 19th, roughly around 4:15 pm, to assess an area that once had a stairway entrance (now removed) into the Kilally ESA off near 59 Wakefield Crescent N5X 1Z6.

Jeff Bruin, Landscape Architect/Parks Planner (TAG) and Linda McDougall, Ecologist Planner Environment & Parks Planning Section Planning (TAG) gave me a ride out to the site and Dan Jones, Land Management Supervisor Upper Thames River Conservation Authority (TAG) will give me a lift to the next site, but transportation will not be provided after that as it is not in the TAG mandate to do so. Michael Dawthorne (ACCAC) suggested transportation costs might be covered by the Accessibility Committee if I asked so wonder if this might be placed on the agenda on the 22nd.

Access to the stairway was via a poorly maintained sidewalk closest to 59 Wakefield. The curb cut did not allow for wheelchair accessibility and the sidewalk emptied into an uneven broken dirt path near at the back of St Mark Roman Catholic Elementary School and Northridge Public School. The dirt path winds south west of Wakefield to the site in question over uneven ground not suitable for wheel chairs and hardly walkable with my cane.

The drop to the Kilally ESA is extremely steep +45 degrees and is currently blocked by a log fence to prevent dirt bikes the entry past this point is impossible by bike or wheel chair as a result of this fence and the steep drop off. This entry is extremely narrow and a large person would not be able to navigate threw the opening in the fence. Two members of the general public stopped us at the meeting and asked when the stairway was going to be replaced. A stairway structure would not allow wheel chair access and a great deal of work would be required to do so at this location. Jeff suggested that there are better sites already in place in Kilally ESA that would make for a more accessible entry point. He will provide me these points at a later date. There is no place for parking of accessible vans or any general parking of any kind at this access point.

I suggested a winding switchback style path be used in place of stairway wide enough for a wheel chair. It was suggested by Jeff and others that the path idea would be far more cost effective then a steel replacement stairway. One of the TAG members suggested that this area need not be fully accessible to those in wheel chairs as other entry points were already available. What Jeff is currently proposing is a winding path, with railing suggested by Linda at key points and a number of small steps included at several locations going down the pathway.

The old stairway was used by children and parents to access the school. I suggested any railing installed be at several levels to accommodate children using the new walkway.

The area is ecologically sensitive and includes a number of native tree species mixed with invading Manitoba Maples and other non native brush which has been suggested be removed. Linda produced a rough sketch showing railing and three s curves at which there would be what looked to be two steps down each to handle the steep grading.

I also suggested that ESA access points should come with a grading level and the sites mapped and marked that are Accessible and to what degree they are accessible. ie child access point, wheel chair entry, steep stairway or difficult entry point.

It was suggested by another member can't remember the association or the name that blind have a difficult time accessing stairs that have no vertical foot stop and it was suggested an open stairway concept for the stairs be avoided. ie steel running steps such as are found on a stepladder.

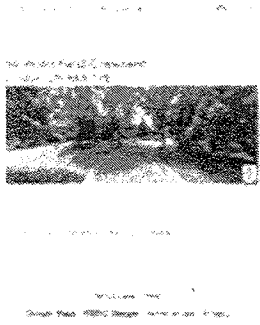
Leonard G. Fluhrer III

Kilally Meadows ESA Access from walkway closest to 59 Wakefield Crescent N5X 1Z6
Len Fluhrer ACCAC Member for TAG

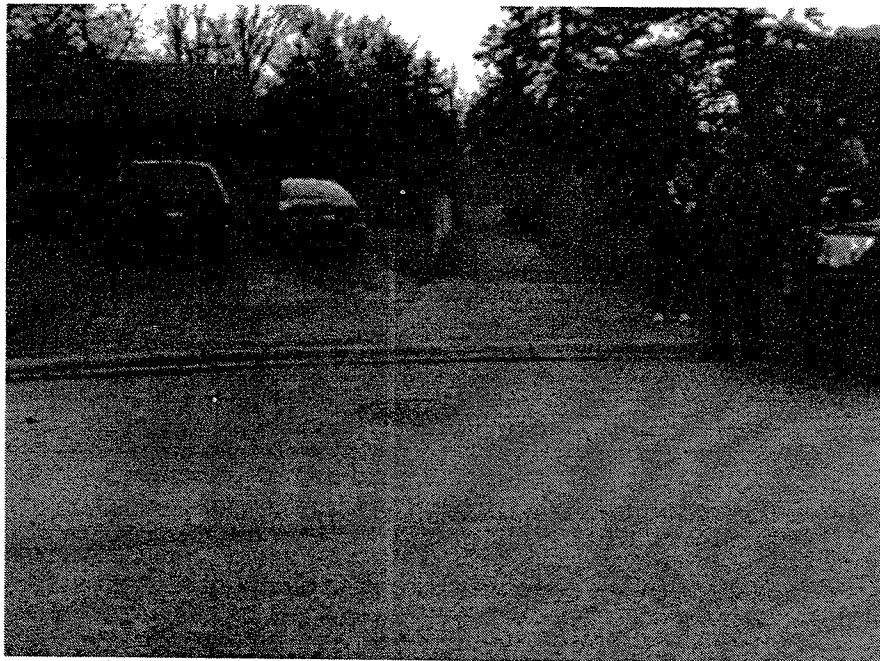
Google

59 Wakefield Crescent, London, ON

Signs



Above Google snapshot shows entry point to Kilally Meadows ESA



Walkway at 59 Wakefield Crescent with steep curb cut, Wakefield has no lighting or sidewalks. Hedge row on right and wooden fence of neighbours on left obscure safe view. This walkway enters into the rear of two Elementary Level School playgrounds one St Mark Roman Catholic and the other Northridge Elementary Public School not visible on the right and the ESA on the left. Access dumps into a dirt bike path that is very rutted and hard to walk upon uneven surface.

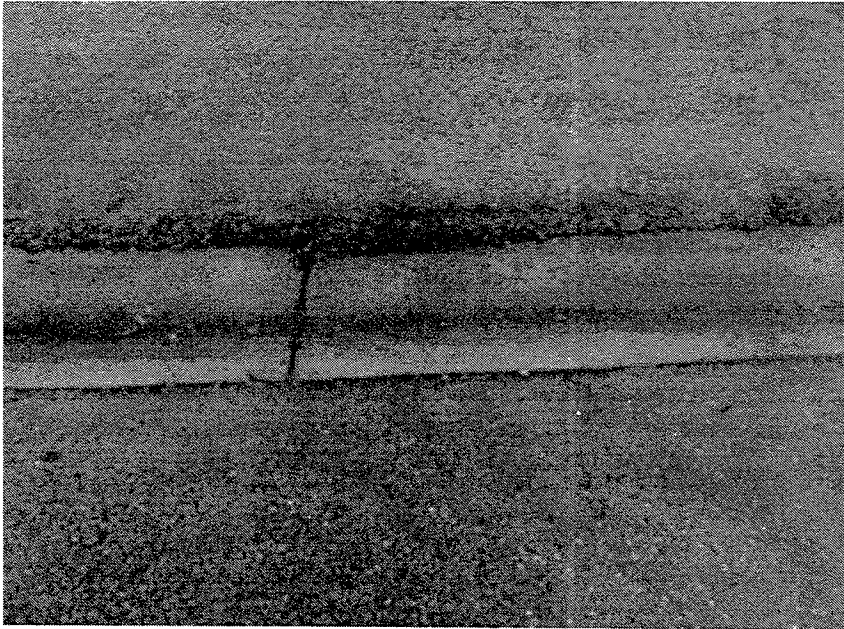
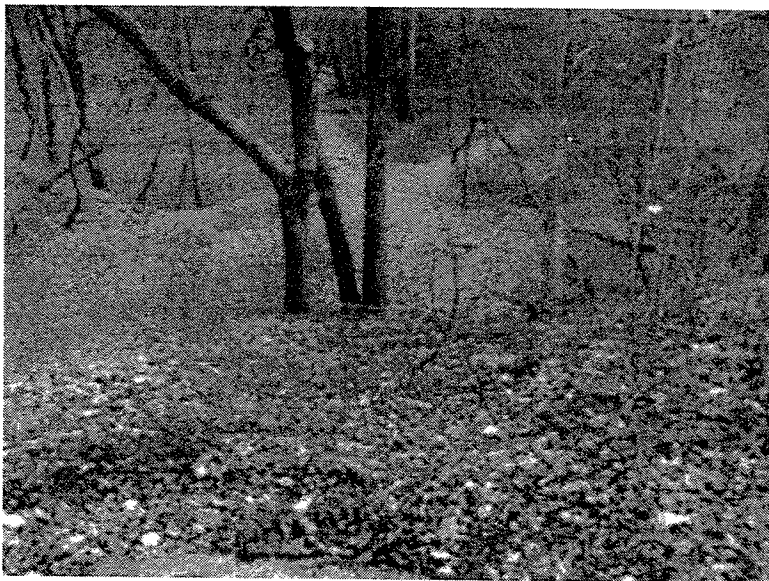


Image of the curb cut do not believe a wheel chair could manage this curb although the picture here doesn't do it justice. There is a lip both at road level and walkway level that creates uneven bump.



Site of old stairway right of trees centre and dirt bike path to left of trees centre. Trees are ESA and can't be removed.

Kilally Meadows ESA Access from walkway closest to 59 Wakefield Crescent N5X 1Z6
Len Fluhrer ACCAC Member for TAG



ESA trees to right of old stairway



dirt bike path and wood log fence put in top right to stop dirt bikes. The dirt bike path is now the only access way at this location.

Kilally Meadows ESA Access from walkway closest to 59 Wakefield Crescent N5X 1Z6
Len Fluhrer ACCAC Member for TAG

Suggestions made:

1. A grading system for ESA Entry Points in regard to difficulty and accessibility.
2. Suggest Switch Back system currently being worked upon by Jeff Bruin of TAG and Linda McDougall also of TAG.
3. sidewalks and street lighting if possible for Wakefield.
4. better access to entry point next to school yard.
5. Railing at steps in switch back be at different levels to accommodate children.

Not suggested but thought of later some sort of better security for area behind two Elementary Schools.

Len Fluhrer
ACCAC Member for TAG
21 Nov 2012