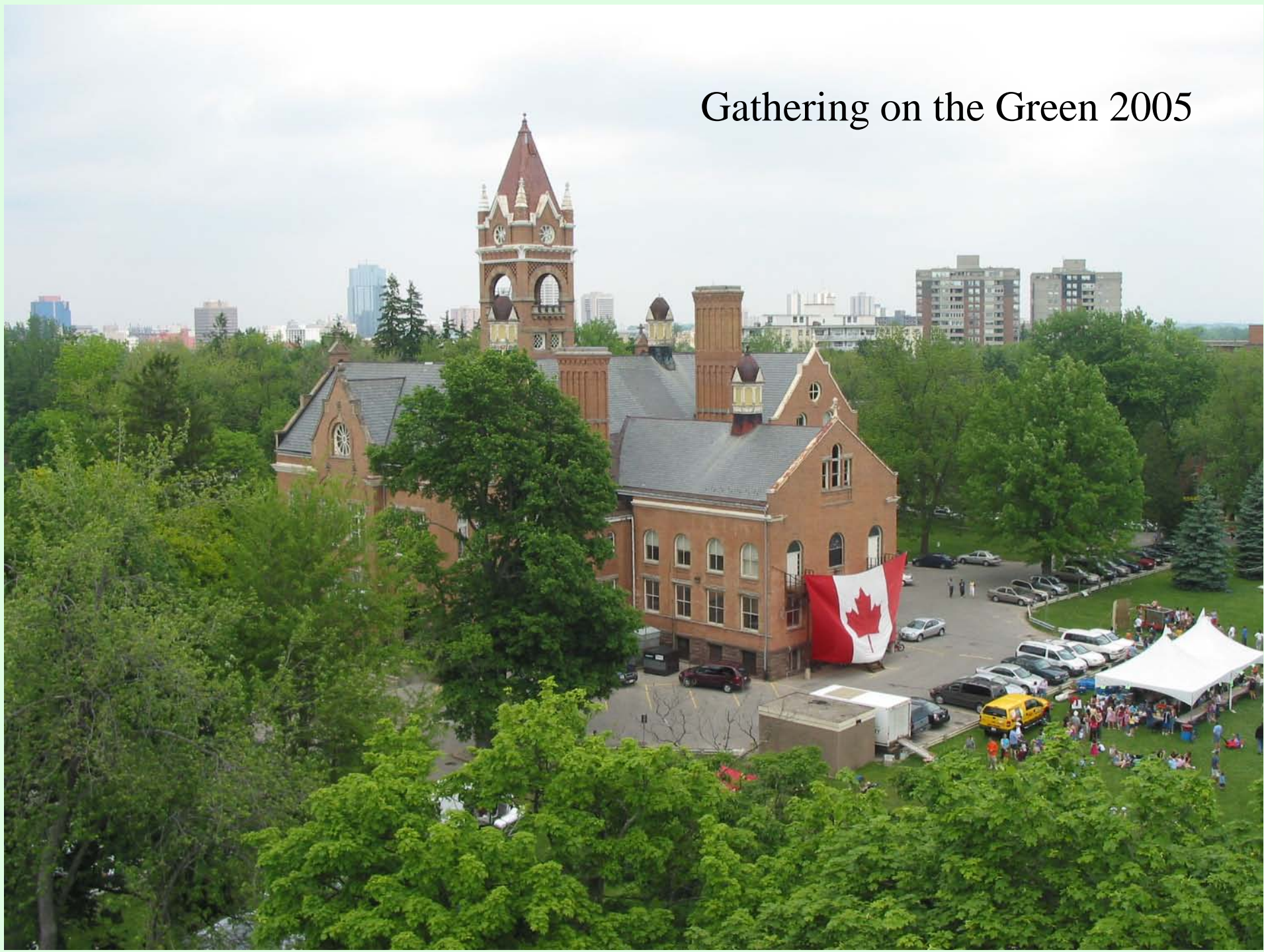


The Normal School

FASC Meeting, November 26 2012



Gathering on the Green 2005





Award winning exterior renovation

Old South Community Organization & the Normal School

- Established 1974
- Over 700 current members
- 30 years hosting Gathering on the Green
- ‘Back to Normal’ Committee established 2005
- Assumed the role of protectors of this space
- Provided community evaluation of this proposal

OSCO & The Normal School, cont'd

1992 - Parking

1998 - Pesticide Use

2005 - Parking Survey

We are back!

After a two-year dormancy, the South London Community Organization is becoming re-established. The mission of the SLCO remains, as always to monitor development applications in South London and to preserve the safe residential character of our neighbourhood.

Last May saw the revival of the Gathering On The Green, thanks to the initiative of the Wortley Village Merchants Association. A group of local residents helped out at the event, and many memberships were sold during the day. The proceeds, nearly \$1,900, were donated to Women's Community House.

Recently we supported residents who opposed expanding the parking lot at the Monsignor Feeney Centre, and we are currently lending support to the Riverforks group. (Approximately \$700 left in our account from the Morton Street Extension fight has been sent to along to them).

We encourage you to become involved by purchasing a membership, by offering to be a director, by attending our meetings and by contacting us about neighbourhood issues. Our meetings are held monthly at the Landon Library and are open to all. Since we do not yet have a regular meeting night, you are asked to contact one of us for further information about our next meeting date. We are hoping to have a general meeting some time in the spring and will be in touch when arrangements have been finalized. Please help us to help us all!

Community Christmas Dance

Please plan to attend the Community Christmas Dance, on November 28 at St. Martin's School. Tickets are \$15 per person and include a buffet meal, live entertainment and the chance to win some great prizes. Things get underway at 7:30, the meal will be served at 8:00 and the dancing should start at around 9:30. Sponsored by the Wortley Village Merchants Association.

Join us!

(If you receive this newsletter by mail you are on our mailing list and are a member in good standing until the 1994 Gathering)

Renew your membership 1) at the Annual General Meeting, or, 2) by completing and delivering a cheque to: The South London Community Organization c/o The Landon Library, 167 W. N.E.C. 3P6. A \$5.00 membership (family or individual) is valid until the 1994 Gathering on the Gr

Name: _____

Phone: _____

Address: _____

Postal Code: _____

For _____

Monsignor Feeney Centre Green
Pilot Project to Reduce Pesticide Use

Who
The London - Middlesex Catholic School Board, together with Old South Community Organization jointly announce the formation / launch of a project to

What:
The plan is designed to reduce the dependence on pesticides at the Monsignor Feeney Centre for Catholic Education.

Where:
Co-sponsored jointly by the LMRCSB and OSCO, the plan, to run initially for a period of _____, the project is an attempt to reduce the use of pesticides on the lawn surrounding the Centre.

When:
OSCO has committed \$500 from the 1998 Gathering on the Green to this project.

...will manage the project.

...enquiries may be directed.

In an effort to reduce the use of pesticides on the lawn

As evidence of the harmful effects of pesticides on animals of all sizes continues to mount this project may help show the way.

The Green is used extensively by neighbours and residents of Old South, and by League Soccer teams in the city.

Community Survey on the MSR Feeney Centre Alterations
by the Old South Community Organization

Background

Late last year, the London District Catholic School Board, which occupies the MSR Feeney Centre at the corner of Elmwood and Wortley Road, informed the Wortley Village Community that it needed to double the 58 paved parking spaces located on the south side of the building. The Board is faced with the fact that if it is to stay in this historic building, 3.5 million dollars worth of maintenance and improvements must be made. It feels that the additional parking will be necessary to satisfy its long term needs.

The Catholic Board "owns" the building and the block of land it sits on as long as they occupy the building. If they decide to leave and go elsewhere, the property reverts back to the Ontario Realty Corporation who will make the building available for lease. If a tenant cannot be found, the property will be sold to the highest bidder. We are confident that this information is accurate and not a threat. We believe that the best way to protect the building is to keep the building in the control of the Catholic Board. We feel that their willingness to work with us in finding a mutually satisfactory solution is genuine.

After a public meeting in November at which concerns were raised about the loss of green space, and whether or not other solutions had been fully explored, a working group was formed to negotiate a solution. We have held three meetings and the following proposed solution has been reached and tentatively endorsed by the Old South Community Organization, the London Advisory Committee on Heritage, and the Wortley Village Business Association. At the same time a number of individuals remain opposed to any additions to the parking area.

Since we have not reached a full consensus, we have decided to conduct this survey to determine a valid community opinion on this matter. We need your opinion, along with those of 150 to 200 residents of Old South, to ensure this survey is accurate and defensible.

_____ time and we thank you in advance for your time.



COMMERCIAL REAL ESTATE

1-866-999-9ADS (9237) EMAIL: ADVERTISING@GLOBEANDMAIL.COM

Firm Capital
Mortgage Investment Corporation (FC-120)

BRIDGE, TERM, CONSTRUCTION
416-635-0221
www.FirmCapital.com

WANTED
Proposals / Tenants for the
Former Normal School, London Ont.
Creative space,
Office zoning,
Iconic building,
Great area!

519-672-0405
www.oscolondon.ca

COMMERCIAL ASSET TRANSACTIONS	
COMMERCIAL APARTMENT	COMMERCIAL RETAIL
7111, 7195 & 7197 Canada Way Burnaby • \$20,800,000 \$98,578 per unit	8498 & 8511 Alexandra Rd, Richmond \$5,345,000 • \$532 per sq. ft.
PRICE	DETAILS
DeWolfe Dr. Corporate Dr. Sarnia Dr.	\$13,970,000 \$8,637,000 \$4,981,000
	\$93/sf \$63/sf \$81/sf
PRICE	DETAILS
1000 E. N.E. Esplanade Blvd. N.W. 1000 Valley Rd. N.W.	\$3,435,200 \$7,840,000 \$12,870,500
	4,520 ac. 16,010 ac. 30,630 ac.
PRICE	DETAILS
Wingo St. 8 900 Ave.	\$5,450,000 \$3,736,000 \$5,500,000
	0.420 ac. 2.635 ac. 60.000 ac.

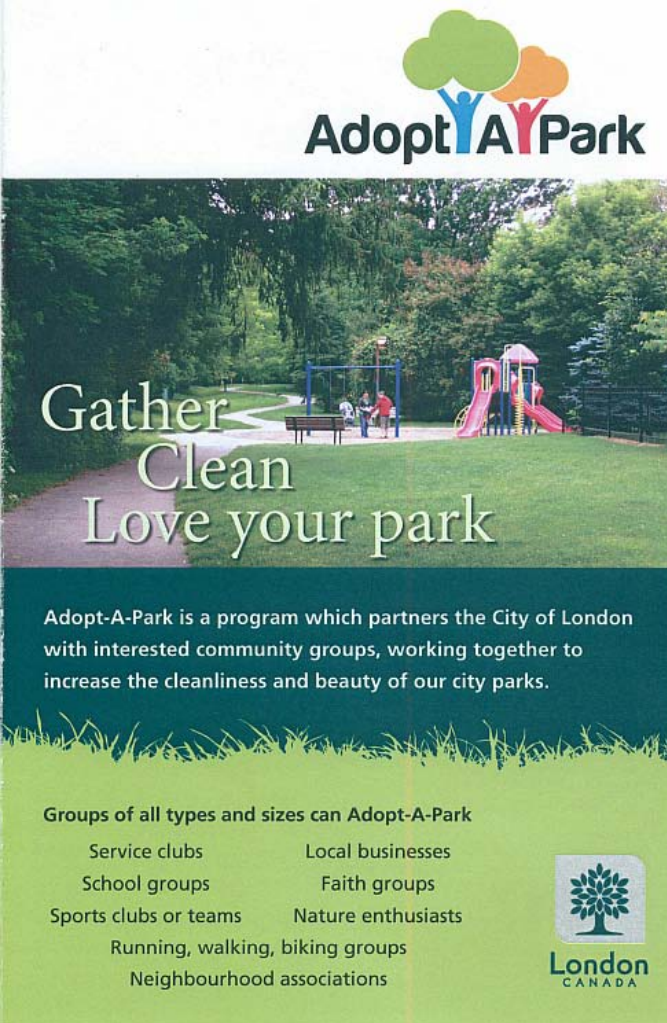
The opportunity before us

- Vacant since 2007 – opportunity cost is real
- Empty buildings don't support communities
- Only way to preserve park for us / for good
- Youth + Centre of Excellence = great idea!
- Y actively supports wide participation
- New “community space” to be created

EOI Process & Results

- Was a success - congratulations & thanks
- Good news - excellent proposal emerged
- Community is behind it (scored 87/100)
- Bring valuable services / activity to this site
- Breathes new life into this building
- **Operating costs can be covered**
- Capital dollars are required to enable this

Adopt a Park? We'd be happy to!



The flyer features a central photograph of a park with a winding path, a playground, and lush green trees. The text is overlaid on this image. At the top is the 'Adopt A Park' logo, which includes a stylized tree with human figures as branches. Below the photo, a dark green banner contains the program's description. At the bottom, a light green section lists eligible groups and the City of London logo.


Adopt A Park

Gather
Clean
Love your park

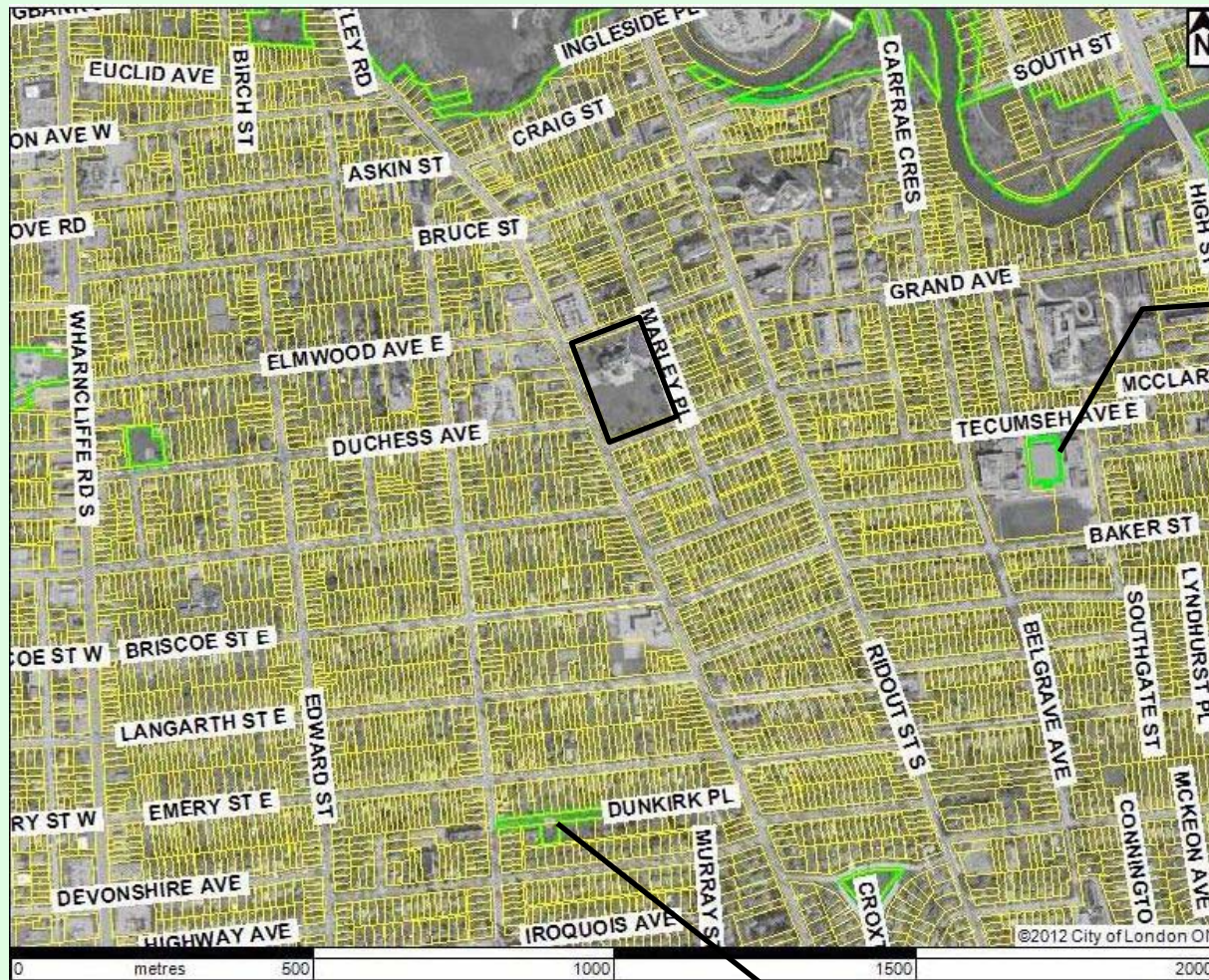
Adopt-A-Park is a program which partners the City of London with interested community groups, working together to increase the cleanliness and beauty of our city parks.

Groups of all types and sizes can Adopt-A-Park

- Service clubs
- Local businesses
- School groups
- Faith groups
- Sports clubs or teams
- Nature enthusiasts
- Running, walking, biking groups
- Neighbourhood associations


London
CANADA

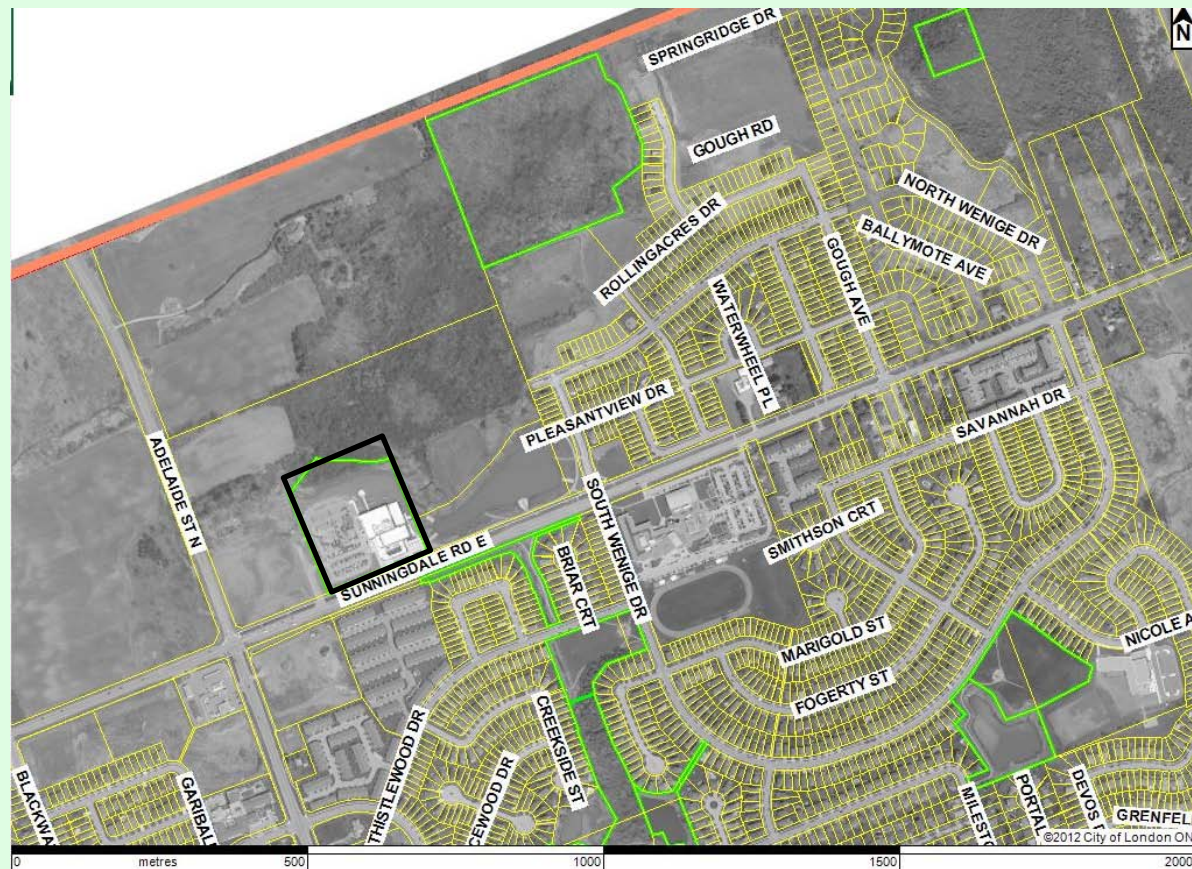
Where will it be?



Arena

Right of
way

Compare & Contrast



The “Greening” of Old South

- Underserviced with respect to parks
- The Green is our unofficial park but is not actually a park
- Have to squawk at the province to maintain it properly
- Playing field is barely functional

Community Park Maintenance

Old South Community Organization
Financial Report
for the months of June, July & August, 2009
and for the stub period to September 8, 2009

file:mydata\oscobook\OscoFinReportYYMM.qpw

Expenditures for the period

Annual Web hosting renewal

210.00

Purchase of trees

579.79

Sod for Green

534.70

1,324.49

1,324.49

Next steps

- Found a partner with a plan that fits
- Acquire property and fix the interior
- We provide: motivated and reliable community with enviable track record
- Help us realize our goal of securing a park and protecting the building
- Province has delivered – time for London to

Our Community builds Community*

- Residents are involved in improving our neighbourhood. (1st of 30)
- Actively participate in protecting built and / or natural heritage. (1st of 30)
- Living in this neighbourhood gives me a sense of pride. (3rd of 30)
- People join together to act on issues of concern. (1st of 30)

Please Vote for Option A