

Advisory Committee on the Environment Report

4th Meeting of the Advisory Committee on the Environment
April 3, 2019
Committee Room #4

Attendance PRESENT: A. Tipping (Acting Chair), K. Birchall, M. Bloxam, S. Brooks, S. Hall, M. Hodge, C. Lyons and D. Szoller and J. Bunn (Secretary)

ABSENT: J. Howell, L. Langdon and S. Ratz

ALSO PRESENT: T. Arnos, G. Barrett, A. Macpherson and J. Stanford

The meeting was called to order at 12:15 PM.

1. Call to Order

1.1 Disclosures of Pecuniary Interest

That it BE NOTED that no pecuniary interests were disclosed.

2. Scheduled Items

2.1 Chippewas of the Thames First Nation

That Municipal Council BE REQUESTED to consider creating voting member positions on the Advisory Committee on the Environment and the Environmental and Ecological Planning Advisory Committee for each of the indigenous communities that surround the City of London; it being noted that a verbal presentation from K. Riley, Chippewas of the Thames First Nation, with respect to the Chippewas of the Thames First Nation, was received.

2.2 Parks and Recreation Master Plan

That it BE NOTED that the attached presentation from A. Macpherson, Division Manager, Parks Planning and Operations, with respect to the Parks and Recreation Master Plan, was received.

3. Consent

3.1 3rd Report of the Advisory Committee on the Environment

That it BE NOTED that the 3rd Report of the Advisory Committee on the Environment, from its meeting held on March 6, 2019, was received.

3.2 Municipal Council Resolution - 2nd Report of the Advisory Committee on the Environment

That it BE NOTED that the Municipal Council resolution, from its meeting held on March 5, 2019, with respect to the 2nd Report of the Advisory Committee on the Environment, was received.

3.3 Notice of Proposed Changes to the Site Plan Control By-law - Bird Friendly Development - Site Plan Control By-law Proposed Changes - Amendments to the Site Plan Control By-law

That it BE NOTED that the Notice of Proposed Changes to the Site Plan Control By-law, dated March 21, 2019, from L. Maitland, Site Development Planner, with respect to site plan control by-law proposed changes related to bird-friendly development, was received.

3.4 Letter of Resignation - T. Stoiber

That it BE NOTED that the letter of resignation from the Advisory Committee on the Environment from T. Stoiber, was received.

3.5 Blue Communities Program Feasibility

That it BE NOTED that the following items with respect to the Blue Communities Project and its application to the City of London, were received:

- a Municipal Council resolution from its meeting held on March 26, 2019; and,
- a staff report, dated March 18, 2019, from the Managing Director, Environmental and Engineering Services and City Engineer.

3.6 "Toilets are not Garbage Cans" Sticker Initiative

That it BE NOTED that the following items with respect to the "Toilets Are Not Garbage Cans" sticker initiative, were received:

- a Municipal Council resolution from its meeting held on March 26, 2019; and,
- a staff report, dated March 18, 2019, from the Managing Director, Environmental and Engineering Services and City Engineer.

4. Sub-Committees and Working Groups

None.

5. Items for Discussion

5.1 Declaring a Climate Emergency

That Municipal Council BE REQUESTED to pass a motion, in the spirit of the following, to declare a climate emergency:

"Whereas climate change is currently contributing to billions of dollars in property and infrastructure damage worldwide, stressing local and international economies;

Whereas climate change is currently jeopardizing the health and survival of many species and other natural environments worldwide, stressing local and international eco systems;

Whereas climate change is currently harming human populations through rising sea levels and other extraordinary phenomena like intense wildfires worldwide, stressing local and international communities;

Whereas recent international research has indicated a need for massive reduction in carbon emissions in the next 11 years to avoid further and devastating economic, ecological, and societal loss;

Whereas the climate in Canada is warming at twice the rate of the rest of the world, as per Canada's Changing Climate report;

Whereas current initiatives such as the green of the city’s fleet and energy reduction initiatives are not sufficient to meet the targets as defined by the IPCC scientists,

Whereas an emergency can be defined as "an often dangerous situation requiring immediate action";

Whereas municipalities such as Kingston, Vancouver and Hamilton have already declared climate emergencies;

Therefore, a climate emergency BE DECLARED by the City of London for the purposes of naming, framing, and deepening our commitment to protecting our economy, our eco systems, and our community from climate change.”

5.2 2019 Federal Budget - Property Assessment for Clean Energy (PACE)

That it BE NOTED that the communication from M. Bloxam, with respect to the 2019 Federal Budget and Property Assessment for Clean Energy (PACE), was received.

5.3 Dark Sky Community/Park

That the communication dated March 18, 2019, from A. Tipping, with respect to a dark sky community/park, BE DEFERRED to the May 2019 meeting of the Advisory Committee on the Environment.

5.4 South Street Park

That the communication dated March 18, 2019, from A. Tipping, with respect to a South Street park, BE DEFERRED to the May 2019 meeting of the Advisory Committee on the Environment.

6. Deferred Matters/Additional Business

None.

7. Adjournment

The meeting adjourned at 2:02 PM.



City of London Parks and Recreation Master Plan

April 2019

Advisory Committee on the Environment



About the Master Plan

Creating a "Game Plan" for Parks, Recreation Programs, Sport Services and Facilities

- The Master Plan provides an overall vision and direction for making decisions.
- It is based on public input, participation trends and usage, best practices, demographic changes and growth forecasts.
- The Plan will be used by the City to guide investment in parks, recreation programs, sport services, and facilities over the next ten years and beyond.



Project Scope



- **Recreation Programming**, such as aquatic, sport, wellness, arts/crafts, dance/music, and general interest programs provided by the City and other sectors



- **Recreation and Sport Facilities**, such as community centres, pools, sports fields, playgrounds and more



- **Parks & Civic Spaces**, such as major parks, neighbourhood parks, gardens and civic squares



- **Investment in the Community**, such as neighbourhood opportunities, public engagement, sport tourism and more



Project Scope

Items out of Scope:

- **Parkland Dedication Policies** (guided by the London Plan and Parkland Conveyance & Levy By-Law)
- **Cycling and Bike Lanes** (addressed in the London Plan and Cycling Master Plan)
- **Environmentally Significant Areas** (guided by the London Plan policies and technical recommendations within individual Conservation Master Plans)
- **Arts, Culture and Heritage** (guided by the Cultural Prosperity Plan and related reports)

Although these items are addressed in other studies, the Master Plan will ensure [alignment](#)



Project Overview



Phase One

Research and Consultation



Phase Two

Development of
Recommendations
and Strategies

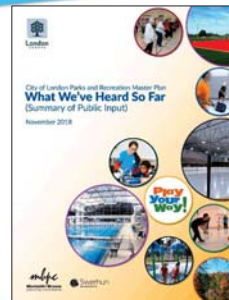


Phase Three

Testing the Master
Plan and Project
Finalization



What We've Heard So Far (Background report)



Consultation Summary



What the Draft Parks and Recreation Master Plan says....

- Did we miss anything?
- Is there anything else you would like to add?

VISION

- *In London, all residents – regardless of age, ability, culture, gender, income, or where they live – have opportunity to participate and share in meaningful and accessible parks, recreation and sport experiences.*

	Goal 1: ACTIVE LIVING	We will support and promote opportunities for active living. This will be achieved through unstructured and structured experiences that encourage regular physical activity and healthy aging.
	Goal 2: INCLUSION & ACCESS	We will remove barriers to participation by adopting a model of "access for all". This will be achieved by welcoming and including all residents.
	Goal 3: CONNECTING PEOPLE & NATURE	We will strengthen residents' connections with their neighbourhoods and nature. This will be achieved through public awareness, neighbourhood-driven activities and decision making, and opportunities to estimate and enjoy London's outdoor spaces and places.
	Goal 4: SUPPORTIVE ENVIRONMENTS	We will invest strategically in parks, recreation, and sport infrastructure to support the Master Plan goals. This will be achieved by responding to demonstrated community needs through the thoughtful design, provision, and management of parks, facilities, and spaces.
	Goal 5: RECREATION CAPACITY	We will deliver exceptional parks, recreation, and sport services. This will be achieved through the use of effective and responsive practices, partnerships, innovation, leadership, and accountability at all levels.

Note: The goals of this Parks and Recreation Master Plan are aligned with the Framework for Recreation in Canada (2015).

Active Living

Strategic Direction: Make parks and facilities walkable and accessible by residents through active transportation and connections to public transit.

Recommendations:

- Emphasis on physical activity and physical literacy
- Expansion of drop in programming – respond to changing demographics & diversity, offering at non-traditional sites, more accessible locations etc.
- More family recreation opportunities... to foster lifelong participation
- Working together with other service providers and stakeholders to understand participation rates and gaps

Inclusion and Access

Goal: We will remove barriers to participation by adopting a model of "access for all". This will be achieved by welcoming and including all residents.

Recommendations:

- Work with under-represented populations to identify participation rates in parks, recreation, and sport; remove barriers to participation and establish appropriate participation targets.
- Expand programs and services for the special needs population, with a focus on increasing physical activity options for school-aged children with special needs.
- Expand staff training around accessibility, including sensitivity training.
- Awareness

Connecting People and Nature

Strategic Directions:

- Enhance awareness of community initiatives and promote the personal and community benefits of parks, recreation, and sport.
- Support volunteerism and community engagement.
- Continue to emphasize initiatives focused on strengthening neighbourhoods, animation of public spaces, and unstructured activities.
- Collaborate with providers to exchange information and promote services and programs.
- **Use recreation to help people connect with nature and be stewards of the natural environment.**
- **Apply effective designs and management strategies that support healthy and sustainable environments, such as natural landscapes, native plants, and natural heritage education opportunities.**
- **Support efforts to expand active transportation networks**, including trails and pathways within and connecting to parks and open spaces.



Connecting People and Nature

Recommendations

- Education and awareness around naturalization projects, park maintenance, importance of exposure to nature, appreciation of nature (awareness, marketing, signage etc.)
- Enhance Thames shoreline access in keeping with best environmental practices
- Trails & Pathways – support opportunities to be immersed in, experience, respect and value nature, align with Cycling Master Plan and link with Provincial Cycling Routes



Connecting People and Nature

Recommendations

- Environmental Health & Stewardship – enhance management of woodlands and work with stakeholders, encourage stewardship of parks, gardens and other community resources – enhance sustainability
- Improve awareness & understanding about importance of Natural Heritage System and broader role in Carolinian Canada.
- Promote naturalization of appropriate municipal lands and beautification and greening efforts
- Management of urban wildlife and invasive species
- Outdoor Play Strategy



Supportive Environments

Recommendations

- Infrastructure – arenas, community centres, aquatics, pools, sport fields, amenities in parks, acquiring land for parks, parks and public space design
- Intensification – more multi-functional spaces, expand social and recreational opportunities to serve a diverse population
- Major retrofits and new construction projects consider climate change, environmental sustainability, and energy conservation
- Consideration of green technologies (e.g. Green roofs, battery-powered maintenance tools, refrigeration plants, etc.) and low impact development practices (e.g. stormwater management, permeable surfaces, etc.) by building these items into City budgets.



Supportive Environments

Recommendations

- Support Community Garden program and related initiatives (e.g. pollinator habitat, community kitchens, etc.) through strategies that encourage broad participation, as identified in the City's Urban Agriculture Strategy and Community Gardens Strategic Plan, an emphasis should be places on community garden development in neighbourhoods.



Recreation Capacity

Goal: We will deliver exceptional parks, recreation and sport services. This will be achieved through the use of effective and responsive practices, partnerships, innovation, leadership, and accountability at all levels.

Recommendations:

- Collect feedback and act on it
- Evidence informed decision making
- Partnerships
- Collaborations



Stay Involved!

You may still provide input:

1. Any questions or comments to until mid-April:
dbaxter@london.ca
2. You are encouraged to read through all of the recommendations online and provide comments online:
getinvolved.london.ca/playyourway
3. Attend an Open House on April 3 – see postcard







Parks and Recreation

MASTER PLAN

We want your feedback

on the Parks and Recreation Master Plan draft recommendations

Visit getinvolved.london.ca to review the recommendations and provide feedback.

Or if you would prefer to provide input in person please visit one of our **Open Houses**:

- Kinsmen Recreation Centre, 20 Granville St.
- Wednesday, April 3 | 1 - 3 p.m.
- Kiwanis Seniors' Community Centre, 78 Riverside Dr.
- Wednesday, April 3 | 6 - 8 p.m.





