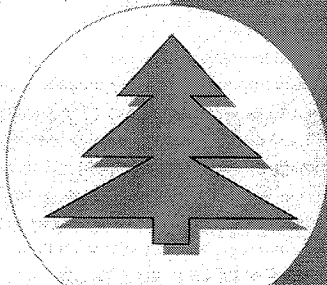
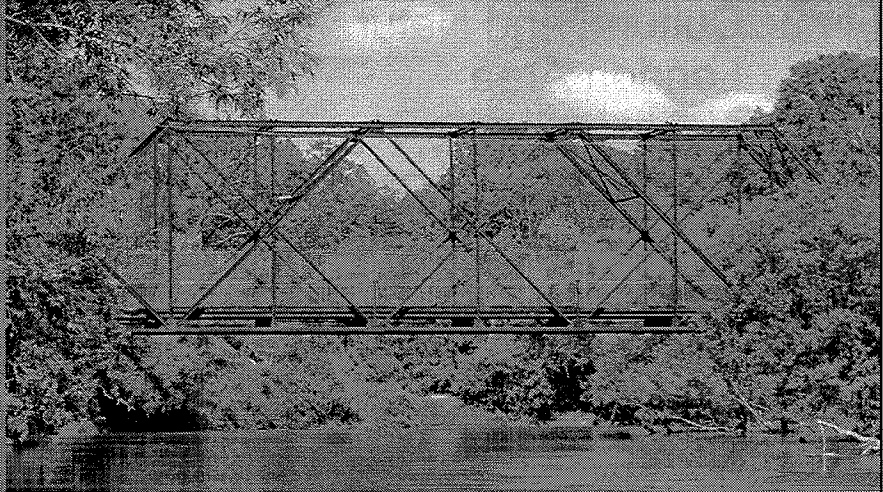


Friends of Meadowlily Woods Community Association



**Friends of
Meadowlily Woods**

*Preserve and Protect
the Integrity of
Meadowlily*



Presentation to the Public Participation Meeting
Civic Works Committee
3 December 2012

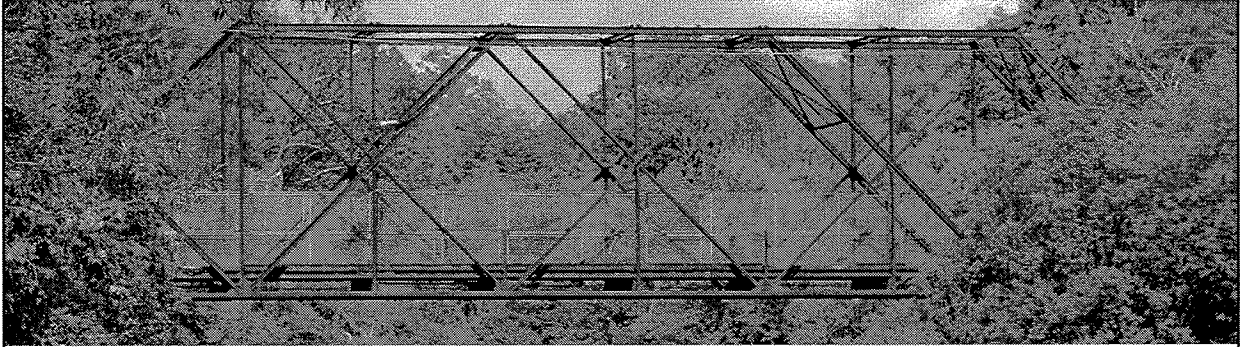


Photo: Shelley White

Outline of Presentation:

1. Opportunities and Constraints
2. Natural Environment
3. Social-Community Issues
4. Economic Issues
5. Conclusion and Summary

By-Law Bill #319: Heritage Designation, Meadowlily Bridge



Bill No. 319, 24 July 2012: A by-law to designate Meadowlily Bridge to be of historical and contextual value or interest. WHEREAS pursuant to the *Ontario Heritage Act*... the Council of a municipality may by by-law designate a property including buildings and structures thereon to be of historic and contextual value or interest; AND WHEREAS notice of intention to so designate the property known as **Meadowlily Bridge** has been duly published and served and no notice of objection to such designation has been received; THEREFORE the Municipal Council of The Corporation of the City of London enacts as follows: 1. There is designated as being of historical & contextual value or interest, the real property at **Meadowlily Bridge**...

Signed by: Mayor Joe Fontana, City Clerk, Cathy Saunders

Improved Signage, Meadowlily Bridge



1. Commissioners Road East at Meadowlily Road South
2. Hamilton Road and Meadowlily Road North
3. Signs on Meadowlily Bridge (next slide>)

South end of Meadowlily Bridge



Due to proximity of Meadowlily Woods Environmentally Significant Area, lowest "foot print" possible with regard to alterations on the east side of Meadowlily Road South.

Trees Removed Off Meadowlily Bridge & Buffers

North end

South end



It also seems advisable to remove the trees that encroach upon parts of the structure of the bridge & are even doing damage to the bridge on the **south end of the bridge** as well as on the **east, west & north sides/ends** of the bridge; that these trees and scrub plants be removed and that a clear corridor be maintained around the bridge for the foreseeable future.

Communities in Bloom Brochure 2009

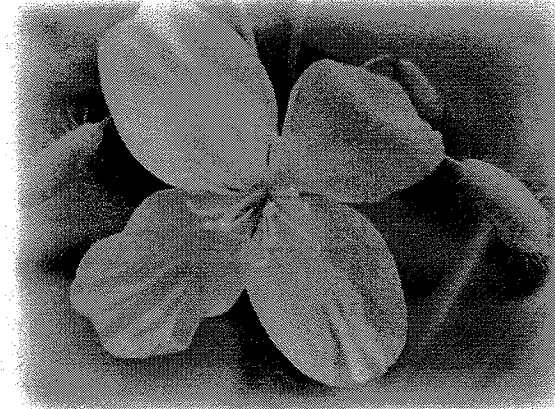
TREE & URBAN FOREST MANAGEMENT

Meadowlily Woods

The Meadowlily Woods Environmentally Significant Area (ESA) is located in east London. It is rich with plant communities, wildlife, heritage, and environmental significance. Some of the landmarks and features that define the area, are the two pillars at the entranceway up to Park Farm Masonry House (1849), the Meadowlily Bridge (1910) that crosses the Thames River, the foundation remains of the Meadowlily Mill (1856) located close to the river's edge and the name sake for the area. The Meadowlily Woods is one of the only known sites in Canada where one may find a rare and endangered species known as the wood-poppy. Over 60 archaeological sites are documented in the Meadowlily area, especially on the Ingersoll Moraine. These sites span the entire 11,000 years of prehistory and include everything from camps to villages, and sites where other objects have been found. To the west of Meadowlily Road along the Thames is the Meadowlily Nature Preserve, owned by the Thames Talbot Land Trust. The public is allowed to hike the trail through the preserve. Environmental enthusiasts are encouraged to pull their boots on and experience a hidden ecological paradise and historical treasure tucked away in the south-east corner of London.

http://www.thamesriver.on.ca/Wetlands_and_Natural_Areas/meadowlily.htm

http://www.thamesriver.on.ca/Wetlands_and_Natural_Areas/images/09_Meadowlily_brochure_ESA.pdf



Tree and Urban Forest Management Section

Thames River CleanUp Rally, Thursday, August 9



Friends of Meadowlily Woods Clean-Up Crew: From left to right— Carol Richardson, Karleen Sirna, Jessalyn Sirna, Susan High, Gary Smith also Richard the Bee Guy and Sebastian Papij who helped us get the shopping cart out of the Thames River @ Meadowlily Bridge. Thanks for helping!

Next Walk, Meadowlily Woods

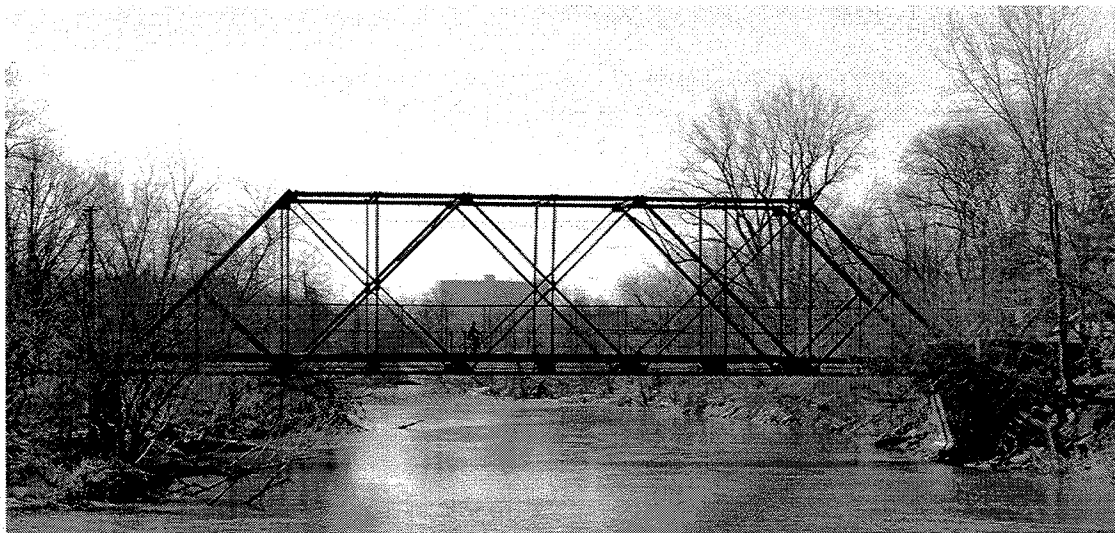


Thames Valley Trail Association Walk:

Saturday, December 1 at 9 am.

Meet in the parking lot of
City-Wide Sports Park,
Commissioners Road East

Meadowlily Bridge: Walkers, Cyclists, etc.



Nature London tours, Thames Talbot Land Trust Nature Preserve events, Thames Valley Trail Association walks, including Tuesday Morning Ramblers, etc. use the bridge with considerable frequency to transverse the Thames River north to south at this point.

Picture Meadowlily Bridge from the East, Gary Smith, 2009

Meadowlily Bridge and Mill

Meadowlily Bridge and the adjacent Meadowlily Mill were noted in the Glen Curnoe article from a book entitled, *London Street Names*, Page 69, 2003, noting the historic nature of "Meadowlily Road" and its environs.

In the picture, one of the foundation stones for the Old Meadowlily Mill, c. 1840, just east of Meadowlily Bridge



Picture,
G. Smith
Fall 2008

Meeting Place, Greeting Place

Historically the Meadowlily Bridge Area was a focal point for school picnics, community events, group outings and local celebrations. Before the time of city pools it was the local swimming hole and a gathering point for anglers & natural area hikes, etc.

If rehabilitated, Meadowlily Bridge could be like a small park, picnic area on the north end and an entry point to Meadowlily Woods to the south.

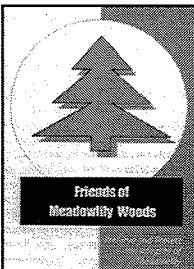


Photo: Carol Richardson, 2011

A Word of Thanks & Appreciation



The Friends of Meadowlily Woods Community Association would like to take this opportunity first of all to express our appreciation and thanks to the AECOM Consultant Team, the heritage engineer, Chris Andreae, as well as the Engineering Department of the City of London for their work on this project.



Friends of Meadowlily Woods Mission Statement



The Friends of Meadowlily Woods is a not-for-profit neighbourhood association that is dedicated to protecting and preserving a natural woodland in our area known as Meadowlily Woods, Environmentally Significant Area. As well we are also committed to saving the natural and historic nature of our community from inappropriate development that would endanger this natural area. We are also interested in protecting and preserving the historic and cultural features of the area like the heritage-designated farm house known as Park Farm, Meadowlily Bridge, built in 1920 and Meadowlily Mill which was originally built around 1840. This group has been formed to assist the members of this association and our community in communicating with each other and to help the leaders of the group to keep its members informed of events and meetings relevant to our cause.

Picture,
G. Smith,
Fall 2008

5. Issues related to the Rehabilitation

- A. Signage added to Meadowlily Road North @ Hamilton Road and Meadowlily Road South @ Commissioners Road to indicate where the bridge is; heritage-type sign like Woodfield or Hellmuth Conservation Districts.
- B. Signage on the bridge (portal-type) as would have been a part of Meadowlily Bridge at the time of its construction.
- C. Heritage-designation plaques with information about the bridge, date, construction, etc.
- D. Park-like area on the north end of the bridge and natural heritage restoration and protection on the south end: This is Meadowlily!