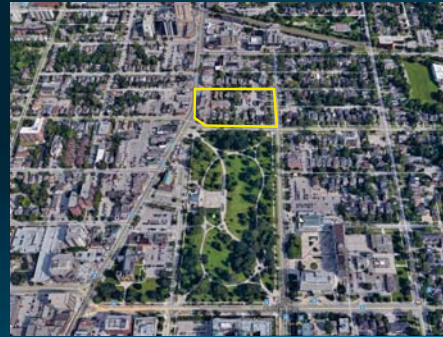


Presentation to City of London Planning & Environment Committee, April 29, 2019

Lands North of Victoria Park FHC Richmond Block

Farhi Richmond Block



Ownership of the entire City block, bounded by Richmond, Central Ave, Wellington and Hyman, adjacent to Victoria Park, is a unique situation.

This entire block is outside of the Woodfield Heritage conservation District.

Allows an opportunity for true infill development which would preserve the important heritage buildings

Farhi Richmond Block



Opportunity for Iconic Design



- 150 residential suites on 24 floors, an 8-storey hotel, complete with 6 levels of parking (2 below grade and 4 above grade).
- Access to the development would be off of Central Ave, with supporting access points on Wellington and Hyman streets.
- The complex would physically link into the existing parking structure that supports Richmond Place.
- The north west corner at Central and Wellington would be strengthened with a 3 and 4-storey office complex.
- The existing large Victorian homes on Central Ave would be maintained and preserved with the intention of designating these houses as heritage properties

Urban Parks

Mix of modern and heritage; variation in height; density around the park; buildings frame the park



Dorchester Square, Montreal



Central Memorial Park, Calgary



Rittenhouse Square, Philadelphia



Central Park, Winnipeg