

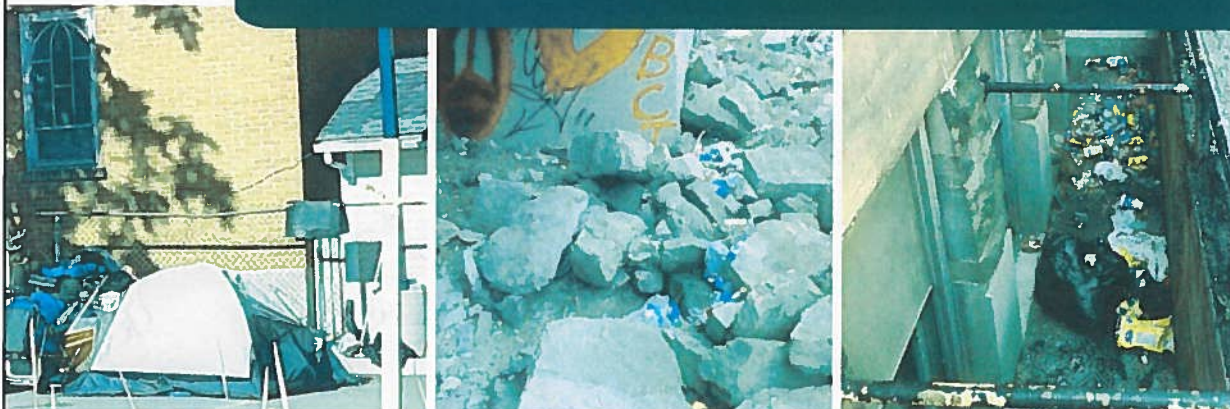


Core Area – Informed Response

September 2018



What's Happening?



We are seeing an increase in street-involved activity and the City is concerned for the well-being and safety of all.




London
CANADA

London is not alone.
Other communities are
experiencing similar
challenges.

- Windsor
- Vancouver
- Ottawa
- Kitchener
- Toronto
- Winnipeg
- Guelph
- Hamilton
- Calgary

The image is a screenshot of a news broadcast. At the top left, there is a logo for 'London CANADA' featuring a stylized tree. To its right, the text 'Across Canada' is displayed in white on a dark teal background. Below this, a large banner features the Government of Canada logo (a red maple leaf) and the text 'Government of Canada' and 'Gouvernement du Canada' in white. To the right of the banner is the word 'Canada' in a large, light blue font. In the center, five individuals are seated at a long table, facing forward. On the right side of the table, a man is standing at a podium, speaking. The podium has a sign that reads 'OPIOID SYMPOSIUM SUR LES'. At the bottom of the broadcast, there is a dark teal bar with the text 'FCM NEWS | September 10, 2018' on the left and social media icons for Facebook, LinkedIn, Twitter, and YouTube on the right. Below this bar, the headline 'Mayors press for opioid treatment to help end crisis' is written in black text. A small number '4' is visible in the bottom right corner of the broadcast area.



In London

- Increased risks from drug use
- Untreated mental illness
- Homelessness
- Pressures on the supports and treatment options available

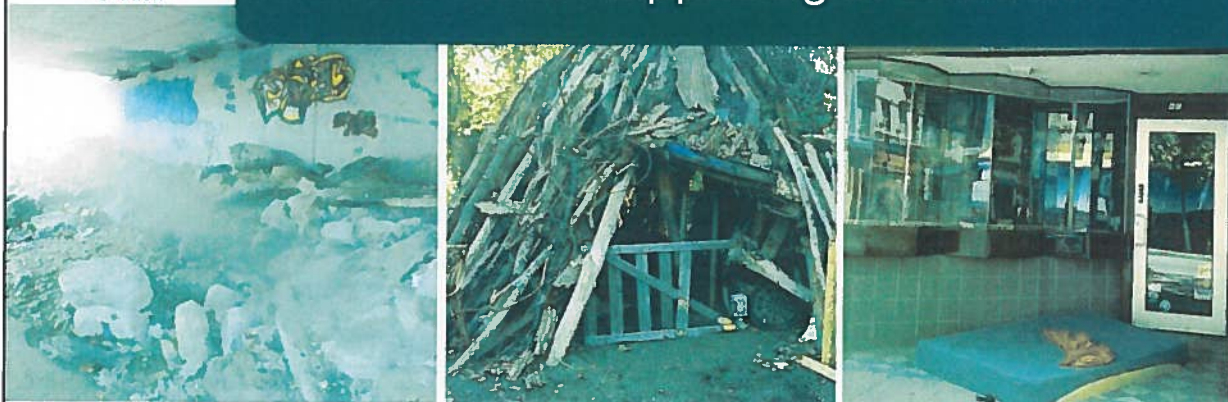


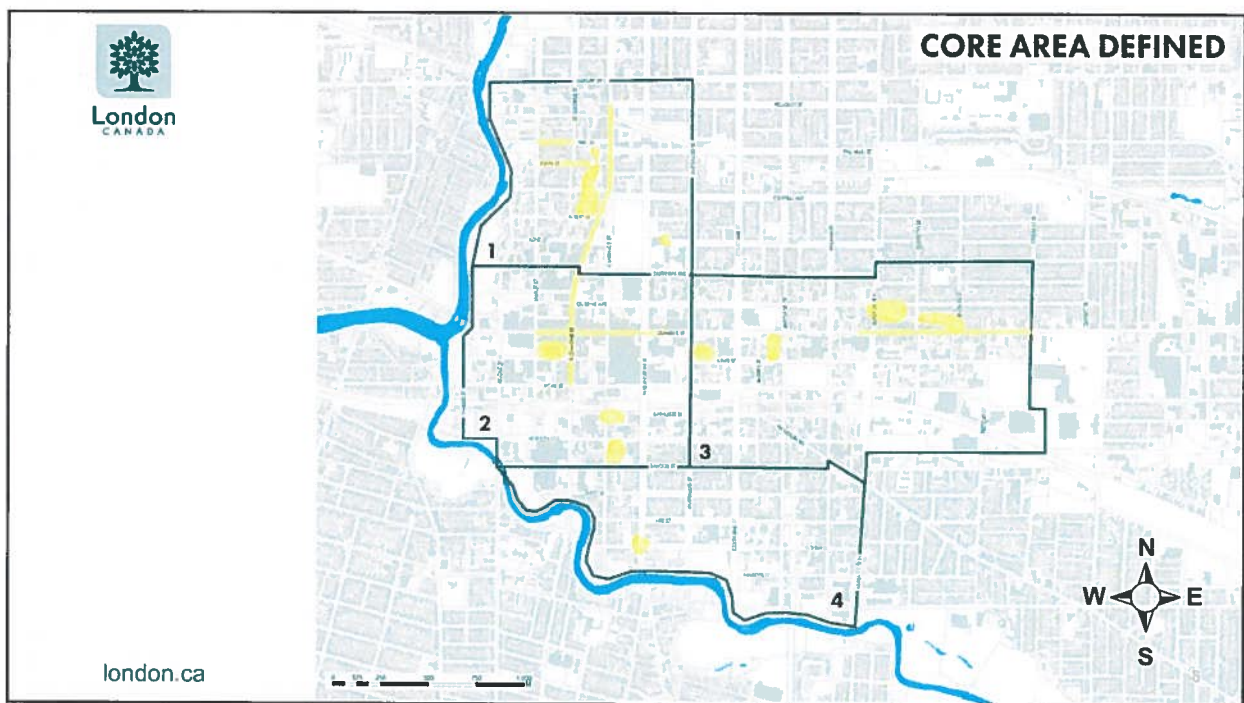
Challenges

- Drug induced, unpredictable and disruptive behaviours
- Vandalism and excessive garbage
- Disruption to and trespassing in businesses
- Urban camping



Where Is This Happening In London?







What is London Already Doing?



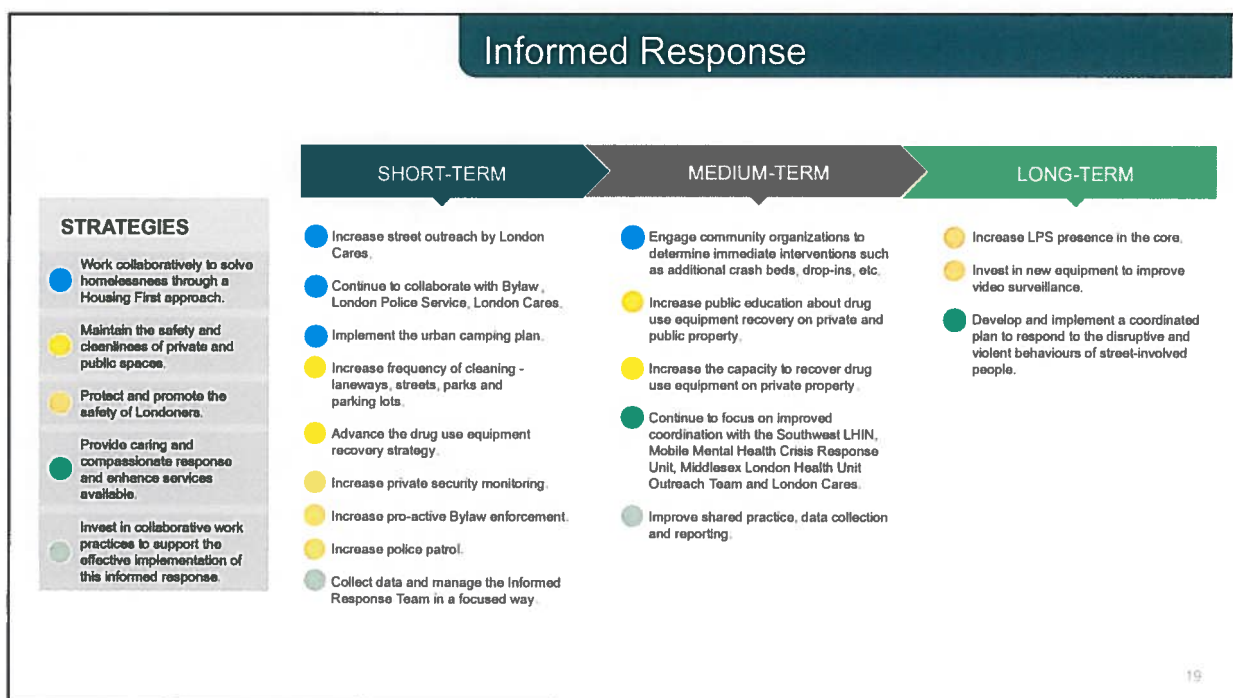
The image shows a photograph of a fenced-in area, likely a construction site or a restricted zone. A person wearing a bright yellow shirt is visible in the middle ground, standing near a blue utility vehicle. The fence is made of chain-link metal. In the background, there are multi-story residential or commercial buildings. A dark teal banner is overlaid on the top right of the photograph, containing the text "Our Response" in white. In the top left corner of the banner area, there is the London Canada logo, which consists of a stylized tree icon above the text "London CANADA".



Strategies

- Provide caring and compassionate response and enhance services available.
- Work collaboratively to solve homelessness through a housing first approach.
- Maintain the safety and cleanliness of private and public spaces.
- Protect and promote the well being and safety of all Londoners.
- Invest in collaborative work practices and infrastructure.

17





Why Now?



