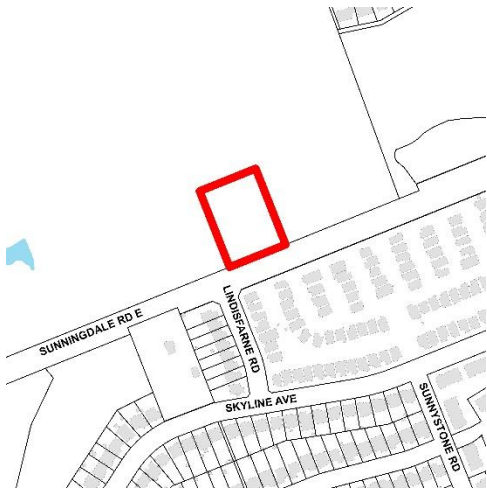




NOTICE OF PLANNING APPLICATION

Zoning By-Law Amendment

348 Sunningdale Road East



File: Z-9011

Applicant: Westchester Homes Ltd.

What is Proposed?

Zoning amendment to allow:

- two, 3 storey townhouse dwellings with a total of 17 units

LEARN MORE & PROVIDE INPUT

Please provide any comments by **February 25, 2019**

Barb Debbert

bdebbert@london.ca

519-661-CITY (2489) ext. 5345

Development Services, City of London, 300 Dufferin Avenue, 6th Floor,
London ON PO BOX 5035 N6A 4L9

File: Z-9011

london.ca/planapps

You may also discuss any concerns you have with your Ward Councillor:

Maureen Cassidy

mcassidy@london.ca

519-661-CITY (2489) ext. 4005

**If you are a landlord, please post a copy of this notice where your tenants can see it.
We want to make sure they have a chance to take part.**

Date of Notice: February 4, 2019

Application Details

Commonly Used Planning Terms are available at london.ca/planapps.

Requested Zoning By-law Amendment

To change the zoning from an Urban Reserve (UR1) Zone to a Residential R5 Special Provision (R5-2(_)) Zone. Changes to the currently permitted land uses and development regulations are summarized below. The complete Zoning By-law is available at london.ca/planapps.

Current Zoning

Zone: Urban Reserve (UR1)

Permitted Uses: existing dwellings; agricultural uses except for mushroom farms, commercial greenhouses, livestock facilities and manure storage facilities; conservation lands; managed woodlot; wayside pit; and passive recreation use.

Special Provision(s): n/a

Residential Density: n/a

Height: 15.0 metres

Requested Zoning

Zone: Residential R5 Special Provision (R5-2(_))

Permitted Uses: cluster townhouse dwellings and cluster stacked townhouse dwellings

Special Provision(s): side yard setbacks of 3.0 metres in place of 6.0 metres for units with windows on the side elevations

Residential Density: 30 units per hectare

Height: 12 metres (3 storeys)

An Environmental Impact Study has been prepared to assist in the evaluation of this application.

Planning Policies

Any change to the Zoning By-law must conform to the policies of the Official Plan, London's long-range planning document. These lands are currently designated as Multi-family, Medium Density Residential in the Official Plan, which permits multiple attached dwellings, such as row houses or cluster houses, low-rise apartment buildings, rooming and boarding houses, emergency care facilities, converted dwellings and small-scale nursing homes, rest homes and homes for the aged as the main uses.

The subject lands are in the Neighbourhoods Place Type in *The London Plan*, permitting a broad range of residential forms up to low-rise apartment buildings, home occupations, group homes, emergency care establishments, rooming houses, and supervised correctional residences.

How Can You Participate in the Planning Process?

You have received this Notice because someone has applied to change the zoning of land located within 120 metres of a property you own, or your landlord has posted the notice of application in your building. The City reviews and makes decisions on such planning applications in accordance with the requirements of the *Planning Act*. The ways you can participate in the City's planning review and decision making process are summarized below. For more detailed information about the public process, go to the [Participating in the Planning Process](http://london.ca/planapps) page at london.ca.

See More Information

You can review additional information and material about this application by:

- visiting Development Services at 300 Dufferin Ave, 6th floor, Monday to Friday between 8:30am and 4:30pm;
- contacting the City's Planner listed on the first page of this Notice; or
- viewing the application-specific page at london.ca/planapps.

Reply to this Notice of Application

We are inviting your comments on the requested changes at this time so that we can consider them as we review the application and prepare a report that will include Development Services staff's recommendation to the City's Planning and Environment Committee. Planning considerations usually include such matters as land use, development intensity, and form of development.

This request represents residential intensification as defined in the policies of the Official Plan. Under these policies, Development Services staff and the Planning and Environment

Committee will also consider detailed site plan matters such as fencing, landscaping, lighting, driveway locations, building scale and design, and the location of the proposed building on the site. We would like to hear your comments on these matters.

Attend a Future Public Participation Meeting

The Planning and Environment Committee will consider the requested zoning changes on a date that has not yet been scheduled. The City will send you another notice inviting you to attend this meeting, which is required by the *Planning Act*. You will also be invited to provide your comments at this public participation meeting. The Planning and Environment Committee will make a recommendation to Council, which will make its decision at a future Council meeting.

What Are Your Legal Rights?

Notification of Council Decision

If you wish to be notified of the decision of the City of London on the proposed zoning by-law amendment, you must make a written request to the City Clerk, 300 Dufferin Ave., P.O. Box 5035, London, ON, N6A 4L9, or at docservices@london.ca. You will also be notified if you speak to the Planning and Environment Committee at the public meeting about this application and leave your name and address with the Secretary of the Committee.

Right to Appeal to the Local Planning Appeal Tribunal

If a person or public body would otherwise have an ability to appeal the decision of the Council of the Corporation of the City of London to the Local Planning Appeal Tribunal but the person or public body does not make oral submissions at a public meeting or make written submissions to the City of London before the by-law is passed, the person or public body is not entitled to appeal the decision.

If a person or public body does not make oral submissions at a public meeting or make written submissions to the City of London before the by-law is passed, the person or public body may not be added as a party to the hearing of an appeal before the Local Planning Appeal Tribunal unless, in the opinion of the Tribunal, there are reasonable grounds to do so.

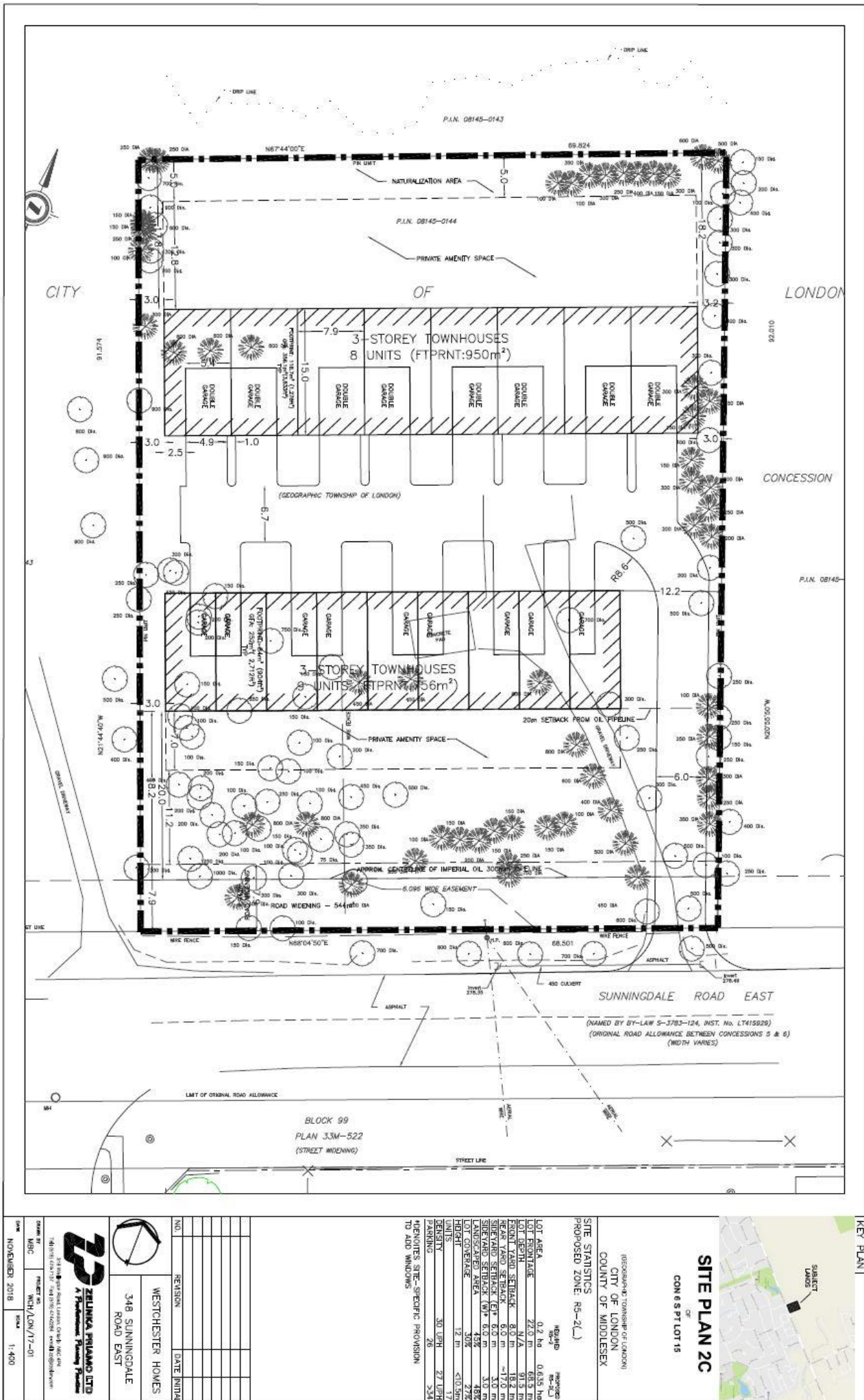
For more information go to <http://elto.gov.on.ca/tribunals/lpat/about-lpat/>.

Notice of Collection of Personal Information

Personal information collected and recorded at the Public Participation Meeting, or through written submissions on this subject, is collected under the authority of the *Municipal Act*, 2001, as amended, and the *Planning Act*, 1990 R.S.O. 1990, c.P.13 and will be used by Members of Council and City of London staff in their consideration of this matter. The written submissions, including names and contact information and the associated reports arising from the public participation process, will be made available to the public, including publishing on the City's website. Video recordings of the Public Participation Meeting may also be posted to the City of London's website. Questions about this collection should be referred to Cathy Saunders, City Clerk, 519-661-CITY(2489) ext. 4937.

Accessibility – Alternative accessible formats or communication supports are available upon request. Please contact accessibility@london.ca or 519-661-CITY(2489) extension 2425 for more information.

Site Concept

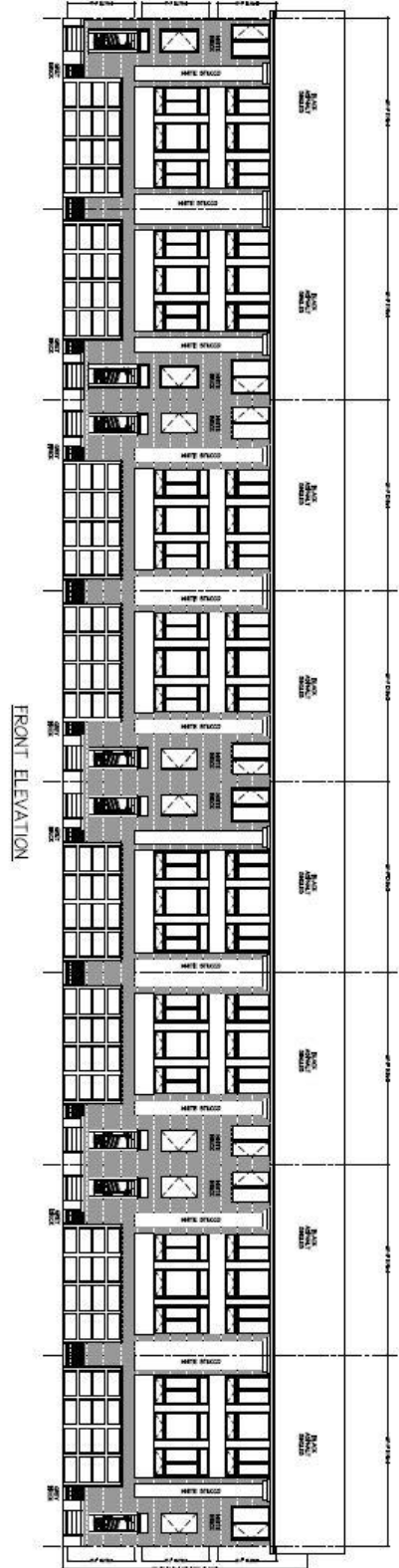
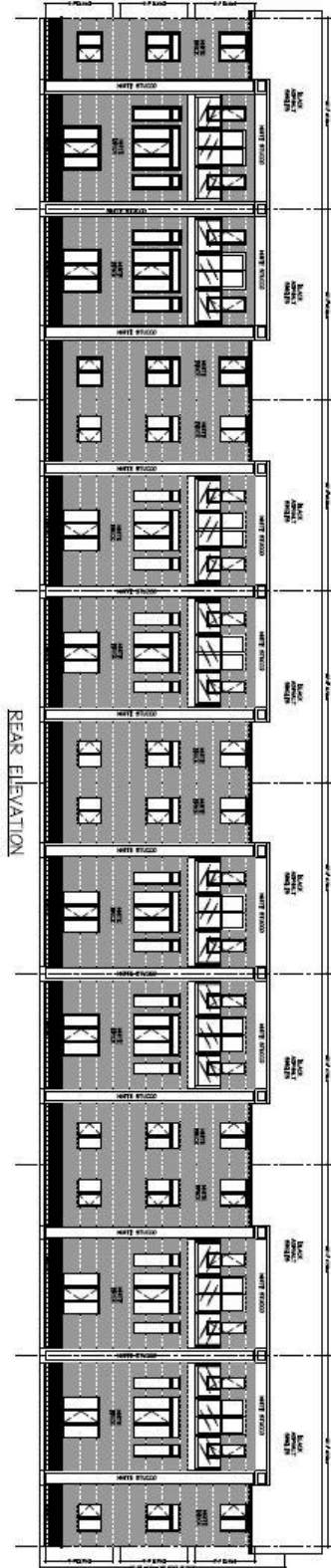
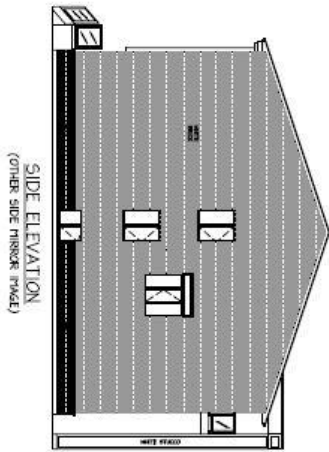


<p>ZEELINKA PINNACLE LTD A Pinnacle Planning Firm</p>		<p>348 SUNNINGDALE ROAD EAST</p>	
<p>NO. _____</p> <p>REVISION _____</p> <p>DATE INITIAL _____</p>	<p>WESTCHESTER HOUSES</p>		
<p>DATE: _____</p> <p>BY: _____</p> <p>FOR: _____</p>	<p>NOVEMBER 2018</p>		

<p>LOT AREA: 0.2 ha</p> <p>LOT FRONTAGE: 27.0 m</p> <p>LOT DEPTH: 81.5 m</p> <p>EXIST. TOWN SETBACK: 8.0 m</p> <p>EXIST. FRONT SETBACK: 6.0 m</p> <p>STREET SETBACK (EXT): 6.0 m</p> <p>STREET SETBACK (INT): 3.0 m</p> <p>LANDSCAPED AREA: 45% 30% 27%</p> <p>LOT COVERAGE: 27%</p> <p>MIN. HEIGHT: 12 m</p> <p>MAX. HEIGHT: <math><10.5m</math></p> <p>PERMITS: 30 UPH, 27 UPH</p> <p>PARKING: 26</p> <p>MINORITIES SITE-SPECIFIC PROVISION TO ADD WINDOWS: >34</p>	<p>SITE STATISTICS</p> <p>PROPOSED ZONE: R9-2(L)</p> <p>PROPOSED: R9-2(L)</p> <p>PROPOSED: R9-2(L)</p>	<p>RESIDENTIAL TOWNSHIP OF LONDON CITY OF LONDON COUNTY OF MIDDLESEX</p> <p>SITE PLAN 2C CON 6 PT LOT 15</p>	<p>KEY PLAN</p>
---	---	---	-----------------

The above image represents the applicant's proposal as submitted and may change.

Building Elevations



1
 DATE: November 6, 2018 SCALE: 0.01042 PROJECT NO: 1724 DRAWING NO: 24170 See Note
 (REQUIRE POSTAGE)
 Front Elevations 348 Sunningdale Road East
 (REVISION TITLE) (JOB TITLE)



REVISIONS	No	DATE	BY
GENERAL REVISION	1		

CONTRACTOR SHALL CHECK ALL DIMENSIONS ON THE WORK AND REPORT ANY DISCREPANCY TO THE DESIGNER BEFORE PROCEEDING.

The above images represent the applicant's proposal as submitted and may change.