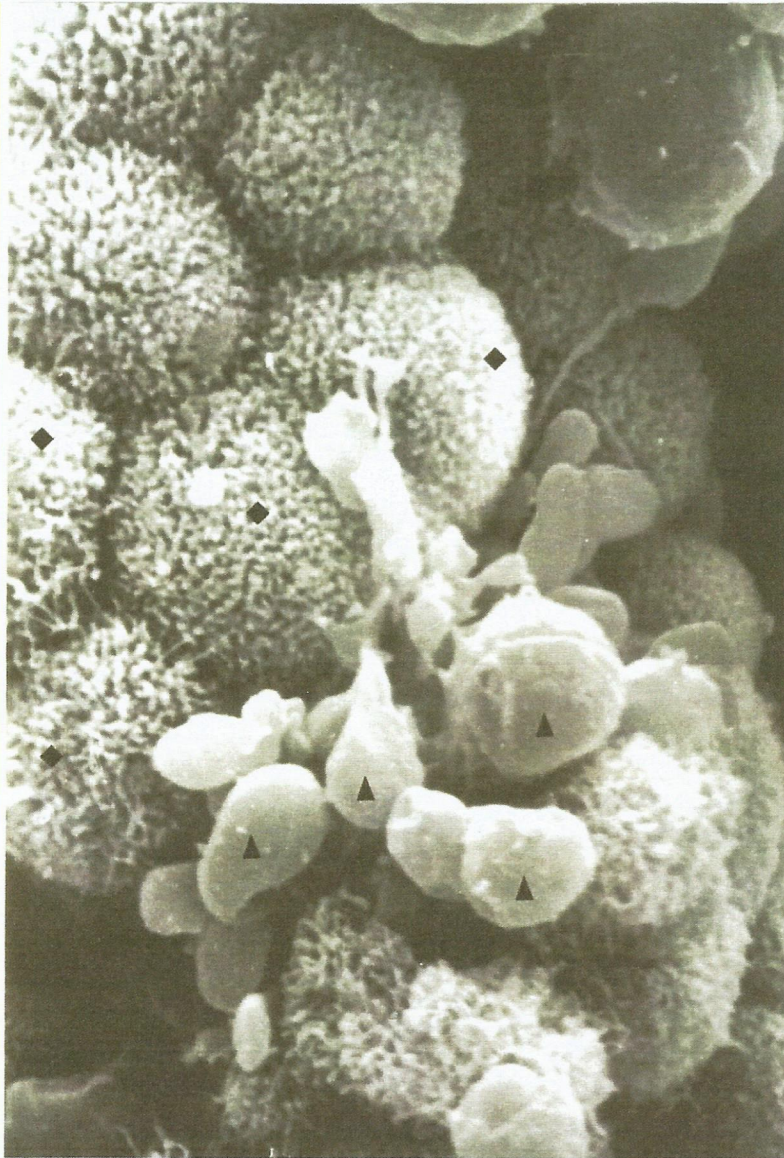


Consuming
Safe
Water
Fluoride
< 1.0 mg/l

Absorption of Nutrients
100 %



N
O
R
M
A
L

H
U
M
A
N

I
N
T
E
S
T
I
N
E

Fig 2: Scanning Electron micrograph of GI mucosa with normal columnar cells lining the Mucosa. The columnar cells are studded with microvilli besides mucus droplets produced in abundance by Goblet cells are seen. The microvilli / brush boarder is the structure responsible for absorption of nutrients. (◆microvilli studded columnar cell, ▲ mucus droplets)

Diagrammatic Representation

