

DRAFT

- Project Site Area
- Study Area
- Highway
- Road
- Flow Direction
- Invasive Species Type**
 - Garlic Mustard
 - Common Buckthorn

Index Map

Oxford Street West

Riverside Drive

Springbank Drive

Whamcliffe Road South

Soler Road

Thames River

1:4,000

metres

40 0 40 80

NAD 1983 UTM Zone 17N

Reference: Contains information licensed under the Open Government Licence – Ontario. Imagery Service Layer Credits: © 2018 Microsoft Corporation © 2018 DigitalGlobe © CNES (2018) Distribution Airbus DS

Matrix Solutions Inc.
ENVIRONMENT & ENGINEERING

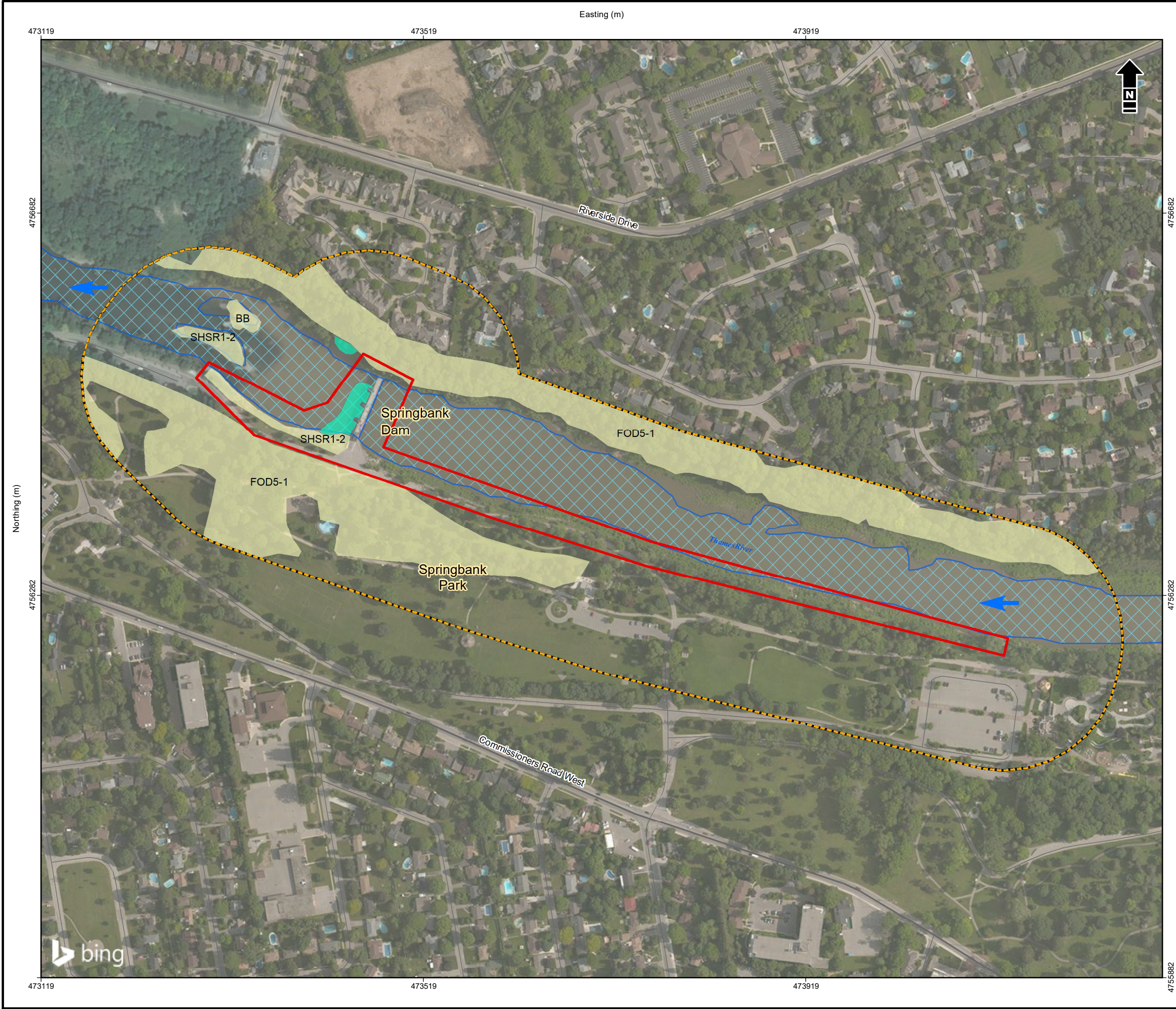
Jacobs and the City of London
Springbank Dam Decommissioning EA - EIS

Invasive Species

Date: October, 2018	Project: 24504	Submitter: K. Reis	Reviewer: A. Fausto
---------------------	----------------	--------------------	---------------------

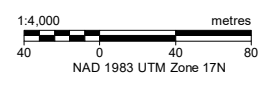
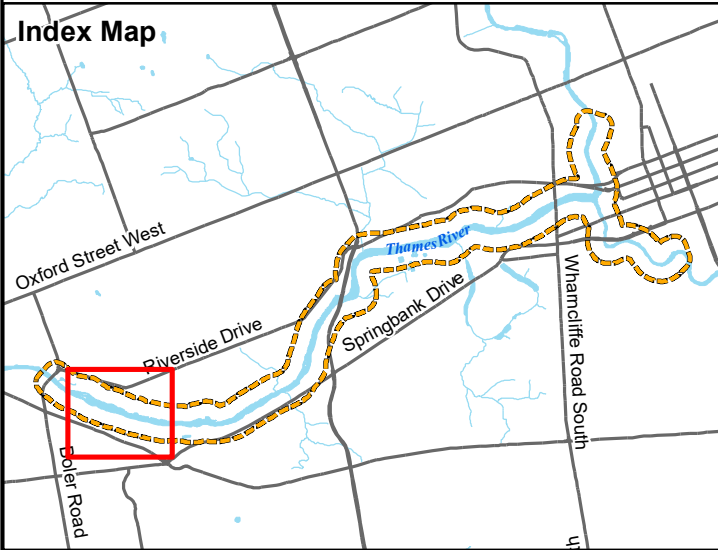
Disclaimer: The information contained herein may be compiled from numerous third party materials that are subject to periodic change without prior notification. While every effort has been made by Matrix Solutions Inc. to ensure the accuracy of the information presented at the time of publication, Matrix Solutions Inc. assumes no liability for any errors, omissions, or inaccuracies in the third party material.

Figure 4.4



DRAFT

- Project Site Area
 - Study Area
 - Highway
 - Road
 - Flow Direction
- Wildlife Habitat Significance**
- Candidate Significant Wildlife Habitat
 - Significant Wildlife Habitat
 - SAR/SCC Habitat
- ELC Type**
- Dry-Fresh Sugar Maple Deciduous Forest (FOD5-1)
 - Willow Gravel Shrub Shoreline (SHSR1-2)
 - Beach Bar (BB)



Reference: Contains information licensed under the Open Government Licence - Ontario. Imagery Service Layer Credits: © 2018 Microsoft Corporation © 2018 DigitalGlobe © CNES



Jacobs and the City of London
Springbank Dam Decommissioning EA - EIS

SAR and Significant Wildlife Habitat

Date:	December, 2018	Project:	24504	Submitter:	K. Reis	Reviewer:	A. Fausto
-------	----------------	----------	-------	------------	---------	-----------	-----------

Disclaimer: The information contained herein may be compiled from numerous third party materials that are subject to periodic change without prior notification. While every effort has been made by Matrix Solutions Inc. to ensure the accuracy of the information presented at the time of publication, Matrix Solutions Inc. assumes no liability for any errors, omissions, or inaccuracies in the third party material.