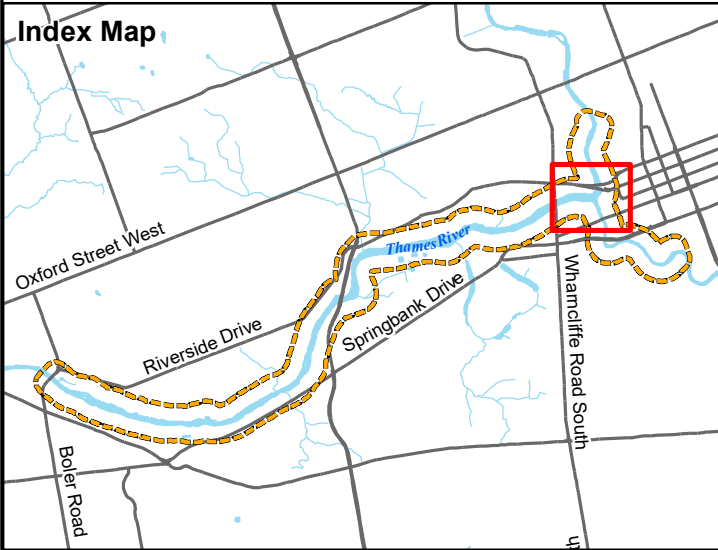


DRAFT

- Project Site Area
- Study Area
- Highway
- Road
- Flow Direction
- Field Survey Locations
  - Breeding Bird Observation Station
  - Fish Sampling Location



Matrix Solutions Inc.  
ENVIRONMENT & ENGINEERING

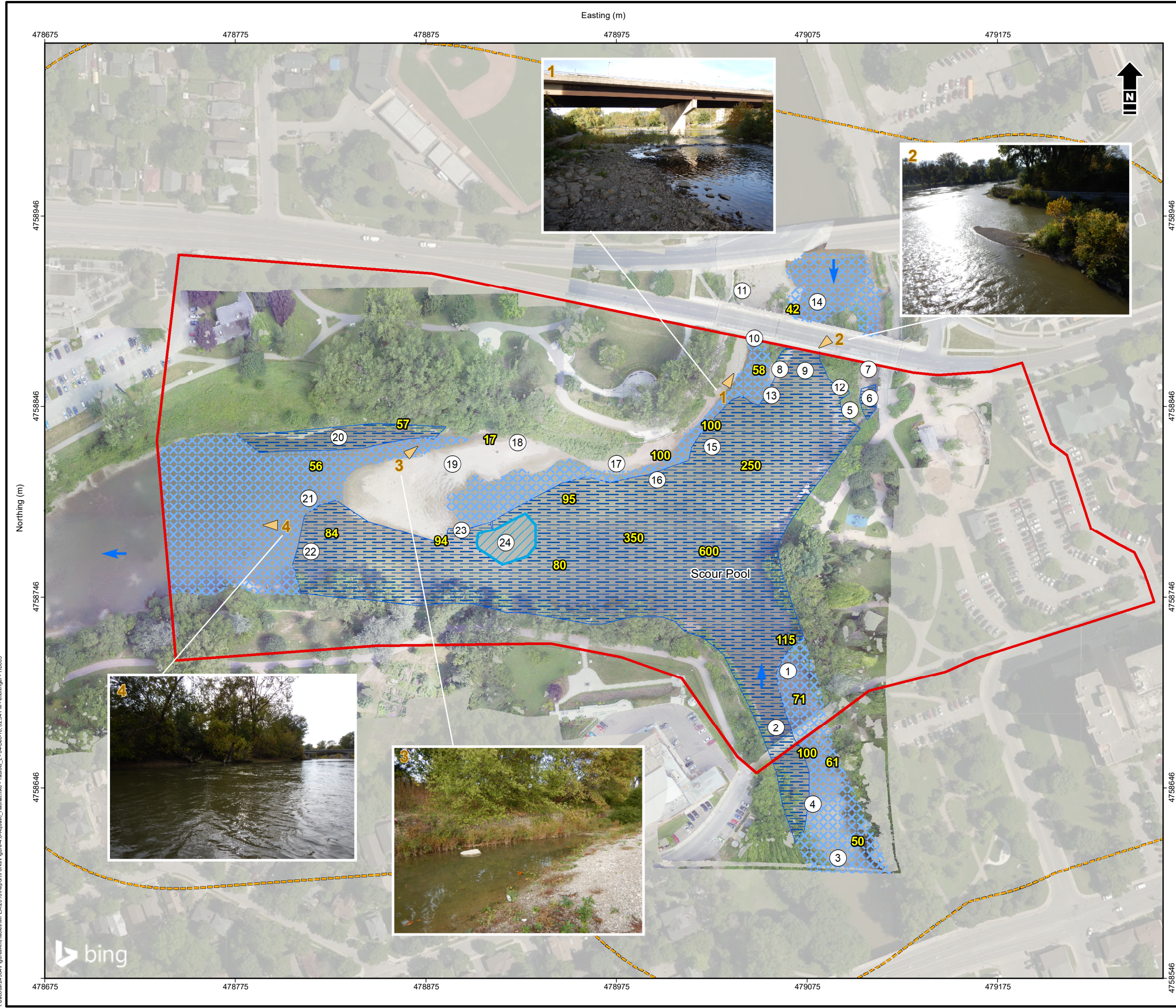
Jacobs and the City of London  
Forks of the Thames EA - EIS

Field Survey Locations

Date:	October, 2018	Project:	24504	Submitter:	K. Reis	Reviewer:	A. Fausto
-------	---------------	----------	-------	------------	---------	-----------	-----------

Figure 3.1





# DRAFT

- Project Site Area
- Study Area
- Pool
- Transitional
- Riffle
- Field Note
- Water Depth (cm)
- Flow Direction
- Photo Number and Direction

**Field Notes**

ID	Comments
1	Substrate sandy with angular cobble
2	Substrate angular cobble
3	Right side of channel more shallow (avg 50cm)
4	Substrate large gravel, Some angular cobble
5	Rocky-vegetated island extending from bridge footing. Water movement restricted to 1.5m width
6	Very deep pool
7	Substrate large gravel/angular cobble/silt
8	Sandy bar extending from bridge footing (approximately 3m wide)
9	Majority of flows coming through center of piers
10	Substrate under bridge is large gravel and angular cobble
11	Aquatic vegetation in this area specifically. Gravel bar with woody debris and vegetation
12	Backwatered area with stagnant water
13	Sandbar which extends further into water and gradually gets deeper
14	Substrate gravel/cobble mix
15	Water depth reaches 1m only 6m from gabion baskets
16	Drops off quickly
17	Sandy bar. Area closer to fountain is vegetated. The rest is not
18	Microhabitat with backwater and some aquatic vegetation. Known fish area
19	Gravel bar. Sometimes connected to other gravel bar but not at the time of fieldwork
20	Along wall - substrate is sandy
21	Substrate small and large gravel
22	Substrate coarse sand and gravel
23	Small rock bar that connects riffle to mid-channel gravel bar during low flows
24	Substrate large gravel/angular cobble/silt

**Index Map**

Oxford Street West  
Riverside Drive  
Springbank Drive  
Thames River  
Wharfedale Road South

1:2,000 metres  
20 0 20 40  
NAD 1983 UTM Zone 17N

Reference: UAV Imagery (07 2018) obtained by Jacobs and Matrix Solutions Inc. used under license

**Matrix Solutions Inc.**  
ENVIRONMENT & ENGINEERING

Jacobs and the City of London  
Forks of the Thames EA - EIS

**Fish Habitat**

Date: October, 2018	Project: 24504	Submitter: K. Reis	Reviewer: A. Fausto
---------------------	----------------	--------------------	---------------------

Disclaimer: The information contained herein may be compiled from numerous third party materials that are subject to periodic change without prior notification. While every effort has been made by Matrix Solutions Inc. to ensure the accuracy of the information presented at the time of publication, Matrix Solutions Inc. assumes no liability for any errors, omissions, or inaccuracies in the third party material.

**Figure 4.6**