

# VICTORIA ON THE RIVER BLOCK 153

January 7, 2019 - PEC



## HISTORY

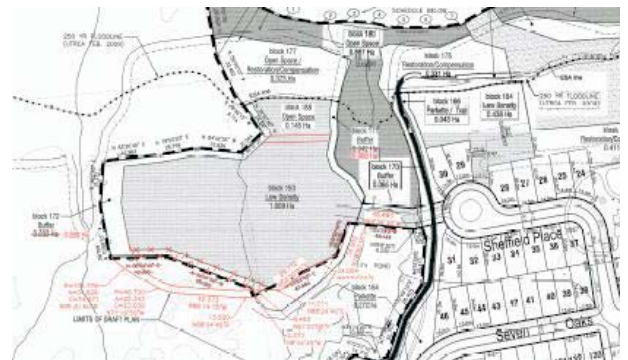
- Residential designation and policies approved in 2007
- Subdivision plan approved in January 2012
- Site Plan pre-consultation - initiated in November 2015
- Site visit with UTRCA and City – January 2016. UTRCA and City suggested that reconfiguration of block to increase corridor width along Thames River would be preferred.
- ZBA application submitted in May 2017
- Site Plan and red-line revisions submitted in July 2017
- Working with City and UTRCA to address technical requirements since then



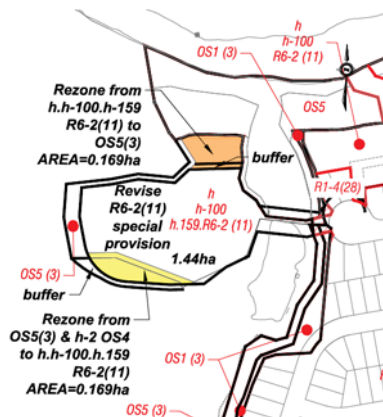
## RED-LINE REVISIONS



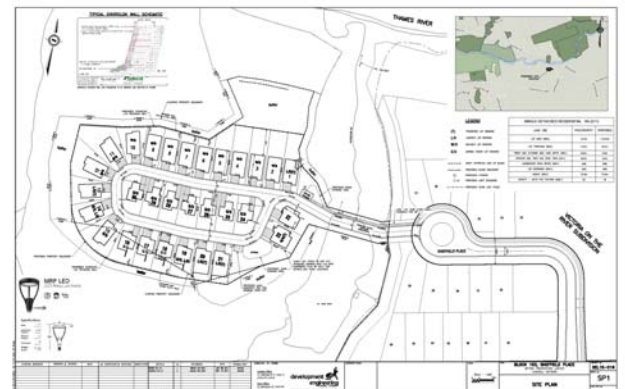
## RED-LINE REVISIONS



## AREAS TO BE REZONED



## BLOCK 153 SITE PLAN



# BLOCK 153 SITE PLAN



Illustration of  
lot layout  
recreation

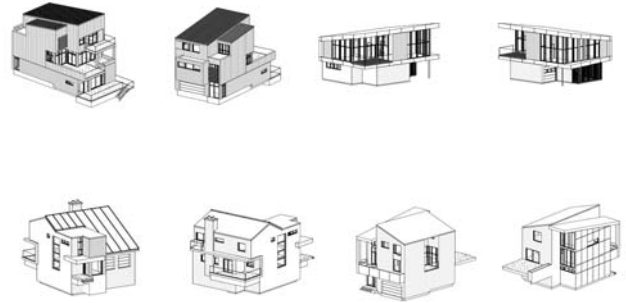
SIFTON VICTORIA RIVER

LEGEND  
LOT TYPE 1  
LOT TYPE 2  
LOT TYPE 3  
LOT TYPE 4  
LOT TYPE 5  
LOT TYPE 6

BEST  
MANAGED  
COMPANIES

Sifton  
Experience. The Difference.

# ELEVATIONS



BEST  
MANAGED  
COMPANIES

Sifton  
Experience. The Difference.