



300 Dufferin Avenue  
P.O. Box 5035  
London, ON  
N6A 4L9

**London**  
CANADA

January 08, 2019

**To: Homeowner and/or Tenant**

**Re: GREG CURNOE TUNNEL REPAIRS (6-PT-02)  
HORTON STREET TO EVERGREEN AVENUE UNDER CN RAIL  
Tender No.: RFT-18-122**

Dear Resident/Owner:

The City of London will be undertaking repairs and upgrades to the Greg Curnoe Tunnel which connects Horton St/Greenway Park to Evergreen Ave, underneath the CN Rail Line west of Wharncliffe Road. Additional streetlighting upgrades will also be completed between the north end of the tunnel and the intersection of Evergreen Avenue and Riverview Avenue, (see attached map). The work will be broken into two phases. **Phase 1** will occur from January 14<sup>th</sup> to February 22<sup>nd</sup>, 2019 and **Phase 2** will occur from April 15<sup>th</sup> to 26<sup>th</sup>, 2019.

**Phase 1** of the work will be focused within the pedestrian tunnel. The scope of work includes concrete patch repairs and replacement of tunnel light fixtures. During **Phase 1** of construction, the pedestrian tunnel between Horton Street and Evergreen Avenue **WILL BE CLOSED** to the public. The work in the tunnel has been scheduled for the winter season to reduce the impact on the users as compared to a summer closure. During this closure pedestrians will be asked to take the sidewalks from Wharncliffe Road S to Horton Street West as an alternate detour route around the tunnel. For cyclists, traffic control signage will be in place for both westbound and eastbound detour routing. The cyclist detour routes extend between Riverview Avenue, Wharncliffe Road South and Horton Street West.

**Phase 2** will include the installation of new light pole fixtures along the existing and new section of a park pathway, extending from the north tunnel entrance to the west end of Evergreen Avenue. During **Phase 2** the pathway and tunnel will be open to the public, however traffic control will be in place to delineate the work zone adjacent to the multi-use pathway north of the tunnel.

The City of London has awarded this work to Weathertech Restoration Services Inc. (the Contractor), with AECOM Canada Ltd. (the consultant) being retained as the City's Contract Administrator for this project.

The Corporation of the City of London  
Office 519.661- CITY (2489) ext. 5473  
Fax 519.661-4734  
jfullick@london.ca  
www.london.ca

Access to personal driveways and all cross streets will be maintained at all times during construction. If you are experiencing difficulty with the specific traffic control arrangement please do not hesitate to contact our site representative Ryan Hunt (519-566-2331), or one of the two people listed below.

**People and Contacts:** If you have any questions, concerns, or want clarification about this information, the following people are assigned to this specific project. As a reminder, AECOM will be acting as the Construction Administration for this project. Your primary contacts are:

City's Project Manager  
Trevor Hitchon, C.Tech.  
Transportation Planning and Design  
519 661-CITY (2489) Ext. 5925  
[thitchon@london.ca](mailto:thitchon@london.ca)

or

AECOM's Project Engineer  
Gavan McDonald, P. Eng.  
AECOM Canada Ltd.  
519-963-5892  
[gavan.mcdonald@aecom.com](mailto:gavan.mcdonald@aecom.com)

Every effort will be made to minimize the inconvenience to you, your neighbours and the general public. Please contact the consultant's Project Engineer or on-site inspector (Ryan Hunt), The City's Project Manager or the under-signed if you experience construction related problems, and thank you in advance for your patience.

Sincerely,



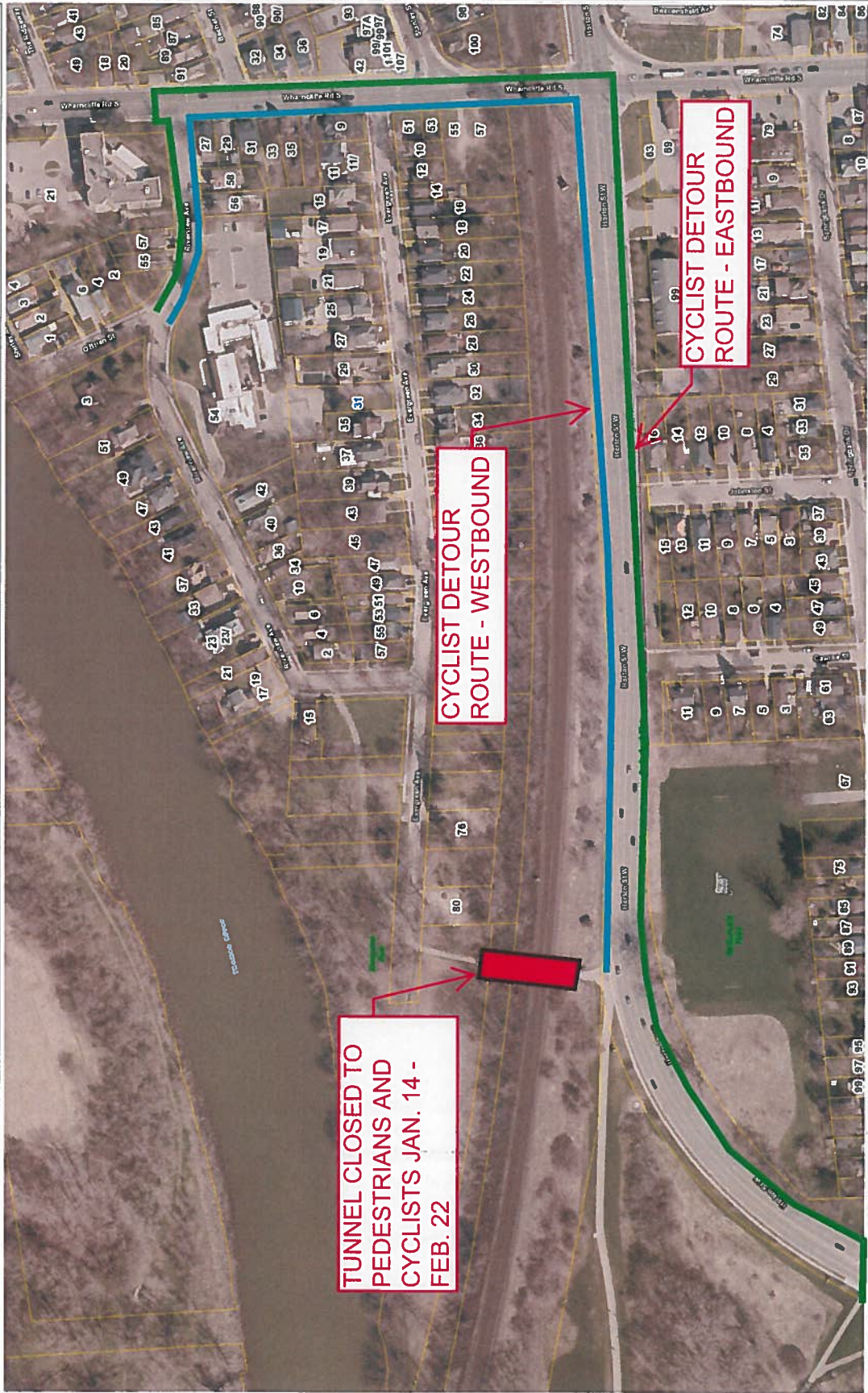
Jane Fullick, C.E.T.  
Senior Technologist  
Transportation Planning & Design Division

Attachment – location map

c: Councilor Stephen Turner  
Councilor Arielle Kayabaga  
K. Grabowski/T. Hitchon - Transportation Planning & Design  
J. Bruin/L. McNiven - Parks Planning  
P. Shack - CAC  
G. McDonald/R. Hunt, AECOM

# City of London Map

Notes



This map is a user generated static output from city of london site and is for reference only.

THIS MAP IS NOT TO BE USED FOR NAVIGATION

1:2,000