



THAMES VALLEY CORRIDOR SoHo Neighbourhood



JANUARY 16, 2018

Cycling Advisory Committee Meeting



INTRODUCTION Purpose

Generate a Long-term Concept Plan and Short-term detailed design (associated with Phase 1 implementation) for the Thames Valley Corridor (TVC) on the north side of the Thames River between Wellington Street and Maitland Street, within the Old Victoria Hospital Lands (OVHL).



INTRODUCTION Purpose

The concept plan and subsequent detailed design developed from this study will:

- Create Gathering Spaces along the top of the Thames Valley Corridor within a new Urban Park Setting;
- Establish Park Amenities for District Park;
- Provide Opportunities for Views to the Thames River and Other Important Site Features;
- Improve Pedestrian Circulation and Linkages to Adjacent City Parks and the Thames Valley Parkway;
- Provide a New Local Shared Pedestrian Driveway along the top of the TVC;
- Integrate the Ecological Recommendations identified in the Environmental Impact Study.



INTRODUCTION Site Context

The site is generally bound by Wellington Street to the west, South Street to the north, Maitland and Colborne Street to the east and the South Branch of the Thames River to the South.

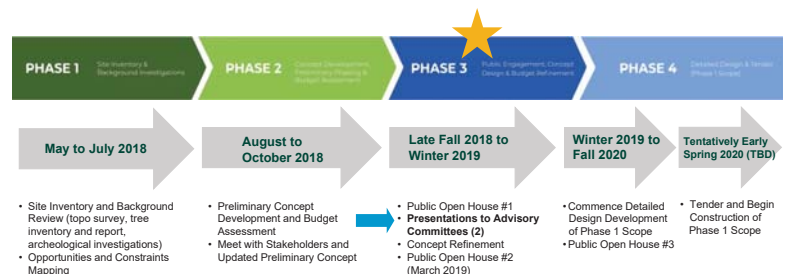


INTRODUCTION Project Background

- This project is a key component of the redevelopment of the Old Victoria Hospital Lands (OVHL).
- Offers a strategic opportunity to respond proactively to the London Plan by providing significant public open space within the Thames River Valley system.
- Opportunity to showcase Environmental Stewardship, Contextual Sensitivity, Habitat Restoration and Woodland Restoration and Management, New Park Opportunities and Historic Commemoration.



INTRODUCTION Study Outline





INTRODUCTION

Key Project Goals / Objectives

The concept plan and subsequent detailed design developed from this study will:

- ✓ Support the goals and objectives of the SoHo Community Improvement Plan;
- ✓ Be consistent with London Official Plan policies detailed in the Old Victoria Hospital Lands (OVHL) Secondary Plan;
- ✓ Will take into consideration the 'Ribbon of the Thames' vision, and;
- ✓ Maximize the area and value of future OVHL development lands.



INTRODUCTION

Key Project Goals / Objectives

The concept plan will:

- ✓ Apply AODA standards and Crime Prevention Through Environmental Design (CPTED) principles;
- ✓ Use best practices for ALL circulation (vehicular, pedestrian/cycling);
- ✓ Incorporate and enhance existing natural features;
- ✓ Establish connections of spaces within the park and to the surrounding community.



CYCLING CONTEXT

Wellington Road is identified as a Rapid Transit Corridor.

The concept plan will support the recommendations identified in the City of London Cycling Master Plan (2016).



CYCLING CONTEXT

Nelson Street is a signed east-west bicycle route



CYCLING CONTEXT

Colborne Street has bicycle lanes



CYCLING CONTEXT

TVP continues to the west with connections to Harris Park





BACKGROUND STUDIES

Background Studies which will influence the Design Process:

- Geotechnical Reports which established the long term stable slope and erosion access allowance;
- Record of Site Condition which identifies past uses and contamination surveys;
- Environmental Impact Study which provided recommendations for woodland buffers and other relevant setback limits
- Archeological – Stage 1



BACKGROUND STUDIES Opportunities & Constraints Mapping



- The draft concept plan is informed by the work that was done in Stage 1.
- It illustrates the overall strategy for the six unique design elements to be incorporated and how they are linked and mutually supported.
- It conceptually illustrates the long-term and short term implementation strategy based on current approved budgets.



Preferred Long-Term Concept

- Thames Valley Parkway**
 - 3.0m wide multi-use pathway
- Urban Park Corridor**
 - Formal pedestrian gathering space with attractive amenities
- Woodland Enhancements**
 - Enhancements to the existing woodland and floodplain per the EIS
- Shared Pedestrian/Vehicular Drive**
 - 9.0m wide shared corridor between Waterloo St. and Colborne Street, which is a flexible space
- Mid-block Connection**
 - 12m Wide Right of Way (two-way) public municipal road with access to the Phase 1 development
- District Park**
 - Low key connection to the Thames River suitable for paddling launch
 - Support a natural playground with walking trails, meadow planting and open space for picnicking



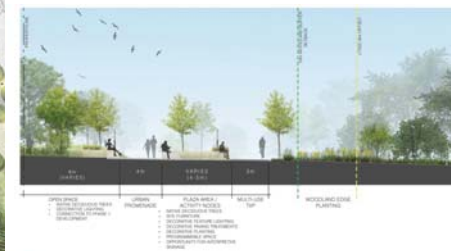
Preferred Long-Term Concept



Preferred Long-Term Concept



Urban Promenade Gathering Areas



A Urban Promenade Activity Nodes



Urban Promenade & Shared Driveway



Central Urban Plaza



Mid-Block Connection



Preferred Long-Term Concept

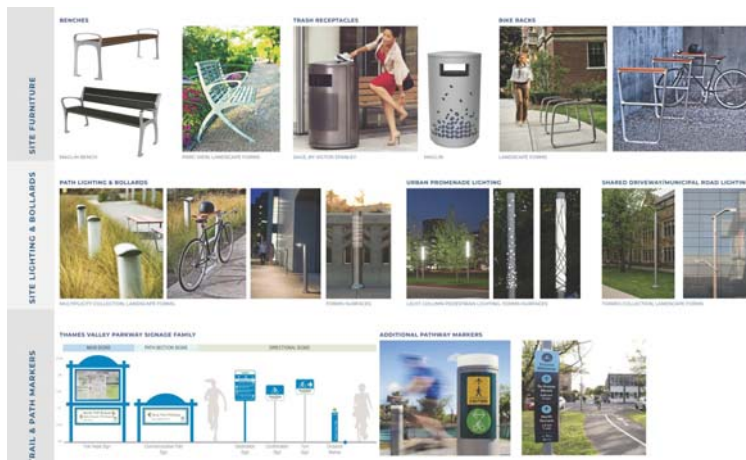


District Park

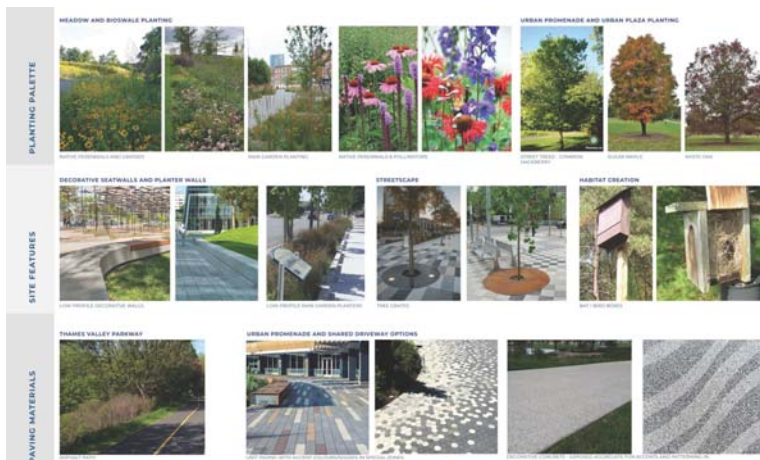
- 3.0m wide multi-use asphalt pathway
- Fully accessible, integrated walkway and cycling system with gathering areas along the Thames Valley Corridor
- Incorporate a hierarchy of trail and directional signage
- Provide primary and secondary walkways with internal linkages
- Provide storage for bicycles (bike racks)
- Incorporate lighting along the Thames Valley Parkway and throughout the corridor
- Incorporate CPTED principles and AODA standards



Active Transportation Design Features



Materials Palette



Materials Palette



PUBLIC ENGAGEMENT Summary to Date



PUBLIC ENGAGEMENT What We Heard

- ✓ Environmental and Naturalization Opportunities are Very Important (*ie. rain gardens, naturalized areas, habitat creation, pollinator habitats, LID's*).
- ✓ Opportunities for Various Gardens (*incorporating flora, fruit trees, community gardens*).



PUBLIC ENGAGEMENT What We Heard

- ✓ Preference for Passive Recreation over Active Recreation with Amenity Space (*open space, areas for picnicking, gathering/events, cycling/walking, canoe or paddle launch, playground*)
- ✓ Celebrate the Cultural and Heritage Uniqueness of the Site (*interpretive signage/storyboards, public art, etc.*).

