

PROPOSED ZONING BY-LAW AMENDMENT APPLICATION

446 YORK STREET

December 10, 2018



Regional
HIV/AIDS
Connection



INTRODUCTIONS

- Dr. Christopher Mackie, Medical Officer of Health / CEO Middlesex-London Health Unit
- Brian Lester, Executive Director, Regional HIV/AIDS Connection
- Jay McGuffin, Monteith Brown Planning Consultants



Community Inspired. Courage Driven.



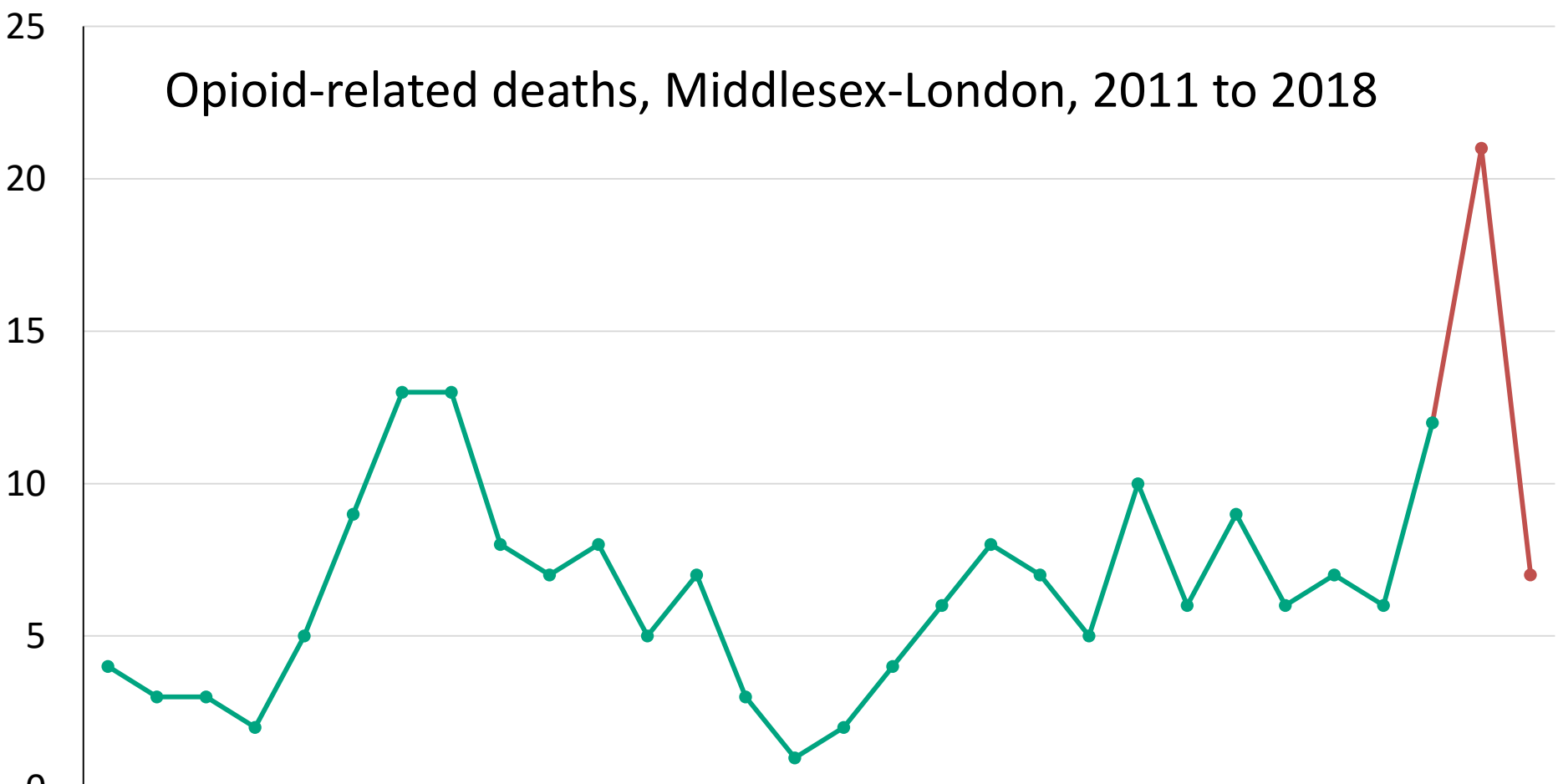
Monteith • Brown
planning consultants

Why Supervised Consumption?

- Public health crisis among persons who inject drugs in London
- Supervised Consumption is an essential public health service
- Preventing drug overdose deaths
- HIV infections and endocarditis rates declined after TOPS opened
- Avoid interruption in service



Opioid-related deaths, Middlesex-London, 2011 to 2018



Q1	Q2	Q3	Q4	Q1	Q2	Q3	Q4	Q1	Q2	Q3	Q4	Q1	Q2	Q3	Q4	Q1	Q2	Q3	Q4	Q1	Q2	Q3	Q4	Q1	Q2				
2011				2012				2013				2014				2015				2016				2017				2018	
4	3	3	2	5	9	13	13	8	7	8	5	7	3	1	2	4	6	8	7	5	10	6	9	6	7	6	12	21	7

TEMPORARY OVERDOSE PREVENTION SITE

- Over 10,000 visits
- 60+ overdoses reversed
- 200+ clients referred to addiction treatment
- 150+ clients referred to medical supports
- Several neighbours noting reduction in needle waste

THE APPLICATION

- Site-specific Zoning By-Amendment to permit Offices with accessory Clinics for the purpose of a Supervised Consumption Facility
- Policy Framework
 - Current planning framework
 - Supervised Consumption Facility location criteria
- Agree with the staff recommendation

TIMELINE OF ACTIONS

2008 - 2012

- Opioid abuse disproportionately affects Middlesex-London, compared to Ontario

2016

- MLHU declares a public health emergency among people who inject drugs
- Supervised Injection Services Feasibility Study consultations held

2017

February: Feasibility Study results released

March: Street-Level Outreach Team created to address HIV outbreaks

April: Opioid Crisis Working Group launched

October: MLHU begins searching for potential locations for SCFs

November: Public consultations conducted to inform the development of SCFs in London

TIMELINE OF ACTIONS

January – May 2018

January: Potential SCF locations toured; TOPS application submitted and approved

February: The City outlines location criteria for SCFs; TOPS opens at 187 King Street

March: Community Information Meeting on SCFs and TOPS

April: Application for 446 York Street submitted to the Provincial and Federal Governments

May: Provincial Government approves Capital and Operational costs for SCF at 446 York Street

June – December 2018

June: Pre-consultation meeting with the City

July: Community Information Meeting with residents, businesses, and property owners

October: Zoning By-law Amendment application submitted

November: Community Information Meeting

December: PEC Meeting

SITE SELECTION PROCESS

- Need for SCF service in Downtown London
- Wide variety of land uses in and around Downtown London
- Lengthy site selection and public consultation process
- 20 sites considered
- Location meets the needs of those the SCF is designed to serve – site is currently used for injection drug use and other high-risk activity
- Avoids land use conflicts

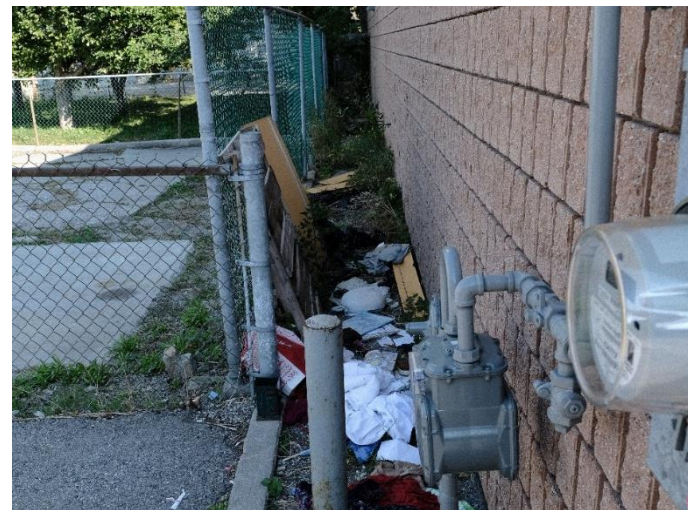


Photo Source: CPTED Site Evaluation and Recommendations, 446 York Street, prepared by: Threat Ready

NEIGHBOURHOOD SAFETY

- London Police patrols
- Private security team
- Plan to mitigate potential negative impacts
- Community-led Neighbourhood Safety Audits
- Regular meetings with neighbours
- Designated Community Contact
- Connecting drug users to services and support



FACILITY DESIGN AND OPERATIONS

- Professional and highly-trained staff
- Wraparound supports offered to all
- Client Code of Conduct
- Open Monday to Sunday, 9:30 AM to 8 PM
- Sufficient space for waiting, intake, consumption, aftercare, and wraparound supports



THANK YOU



Regional
HIV/AIDS
Connection