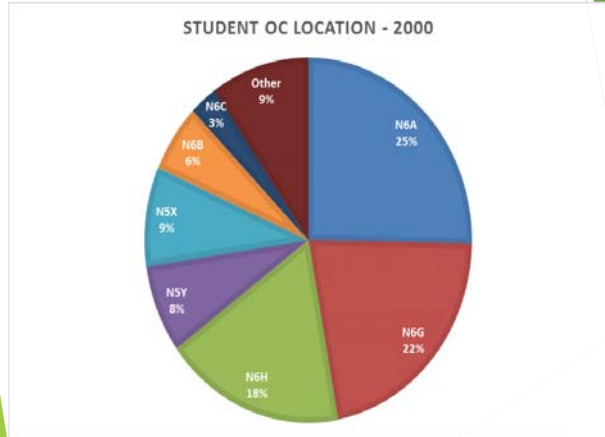
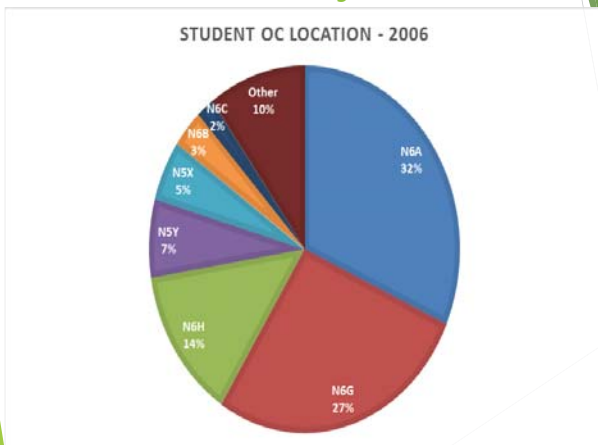


Western Off-Campus Survey

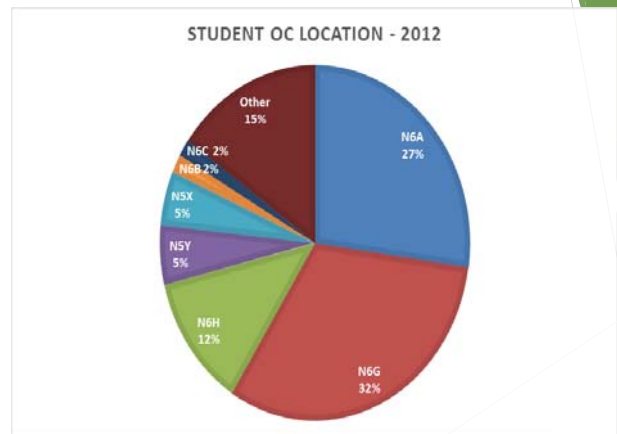
Western OC Survey 2000



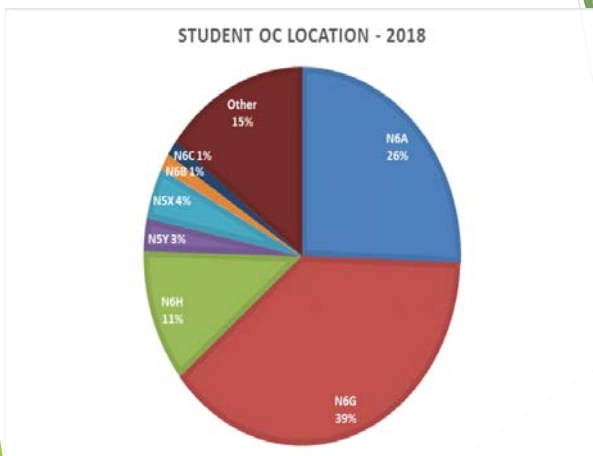
Western OC Survey 2006



Western OC Survey 2012



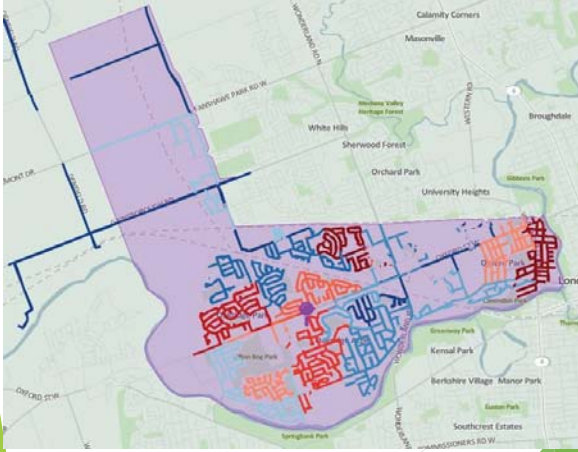
Western OC Survey 2018



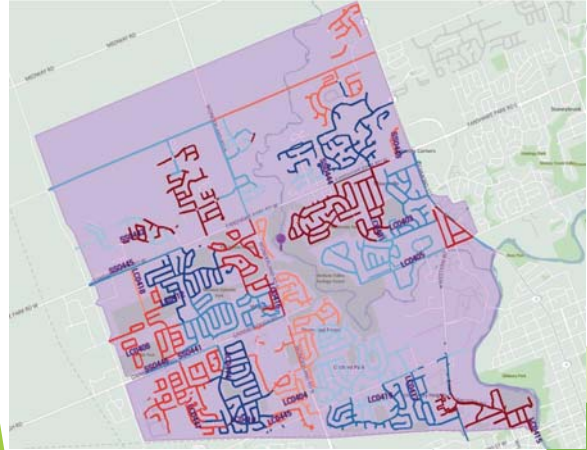
Western OC Survey - N6A



Western OC Survey - N6H



Western OC Survey - N6G



Western OC Survey

- Significant changes between 2000 and 2018
- NGG has gone up 17%
- N6A has fluctuated but basically the same
- N6H down 6%

Western OC Survey

- ▶ Factors in renting
 - ▶ Location, Location, Location
 - ▶ Price
 - ▶ Number of Bedrooms

Western OC Survey

- ▶ Areas which had a lot of student tenants 25-30 years ago but are now off the mindset
- ▶ Kipps Lane
- ▶ White Hills

Western OC Survey

- ▶ Grad students now live where undergrad live

Western OC Survey

- ▶ Issues for OC Students
 - ▶ Maintenance
 - ▶ Distance to facilities
 - ▶ Connection to other students

Western OC Survey

- ▶ I pay ...
 - ▶ 10% pay nothing (at home)
 - ▶ 7% less than \$400
 - ▶ 56% between \$401 and \$600
 - ▶ 16% between \$601 and \$800
 - ▶ 11% pay more than \$801