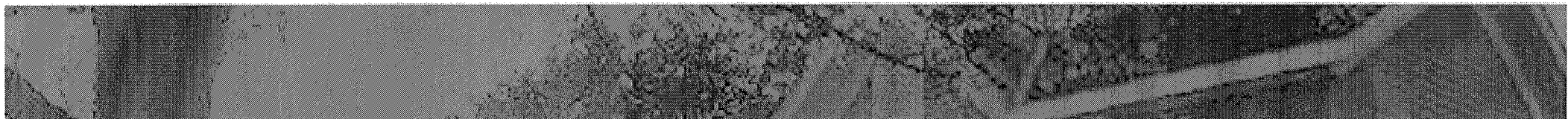


Simon Pont
Interim Executive Director

Neighbourhood Watch London:
Empowering neighbours for a safer city

Main Events - 2012

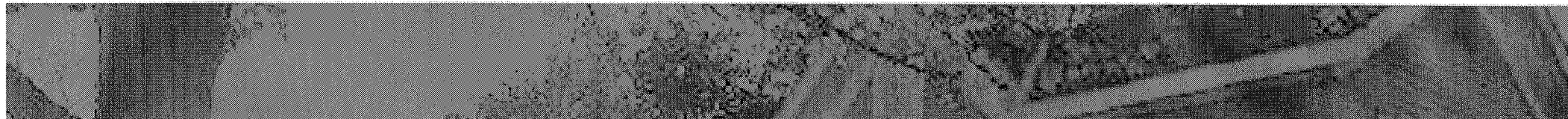
- **February:** Third Annual Evening of Entertainment – with a Twist
- **February:** Launch of Business Watch London
- **April:** Annual General Meeting
- **June:** Neighbours Night Out
- **July / August:** 'Graffiti Go' Summer program
- **September / October:** Recruiting new Executive Director



Statistics (1)

- London Police Service shares break-in and car theft data with Neighbourhood Watch London - daily.
- Statistics for 1st January to 31st December 2011:

Homes		Break & Enters (Rate per 1000 homes)	Vehicle Thefts (Rate per 1000 homes)
All London Areas	114000 (100%)	2859 (25)	552 (5)
Neighbourhood Watch Areas	24000 (11%)	304 (13)	51 (2)
Non-Neighbourhood Watch Areas	90000 (89%)	2555 (29)	501 (6)



Statistics (2)

- As at 30th September 2012 there were:
 - 531 active watches.
 - 20 new watches
 - 26 prospective watches “in progress”
 - 19 watches saved from closure
 - Over 30 presentations to community groups

