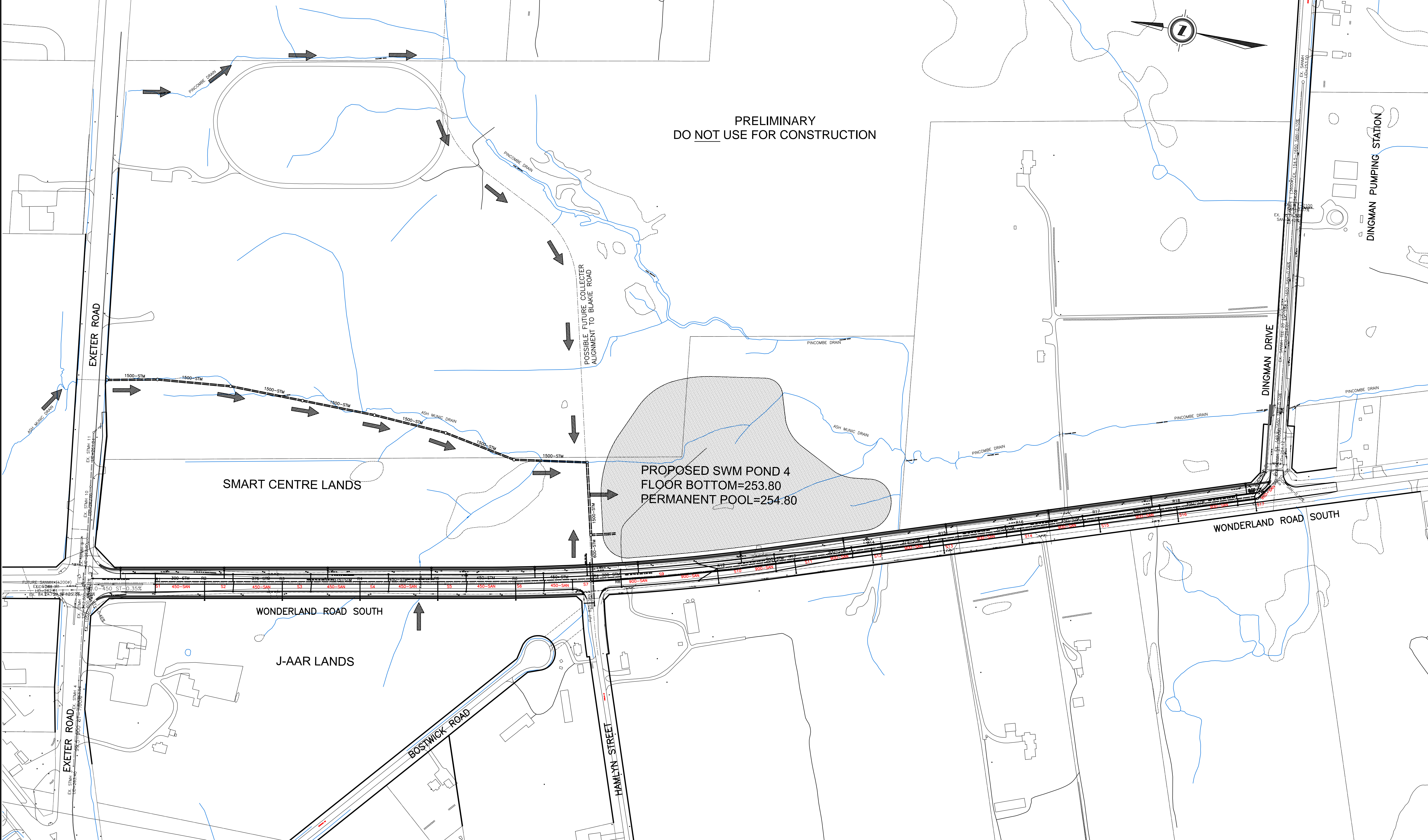
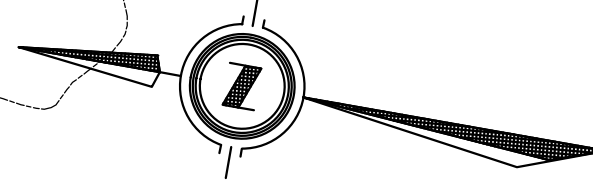




PRELIMINARY  
DO NOT USE FOR CONSTRUCTION



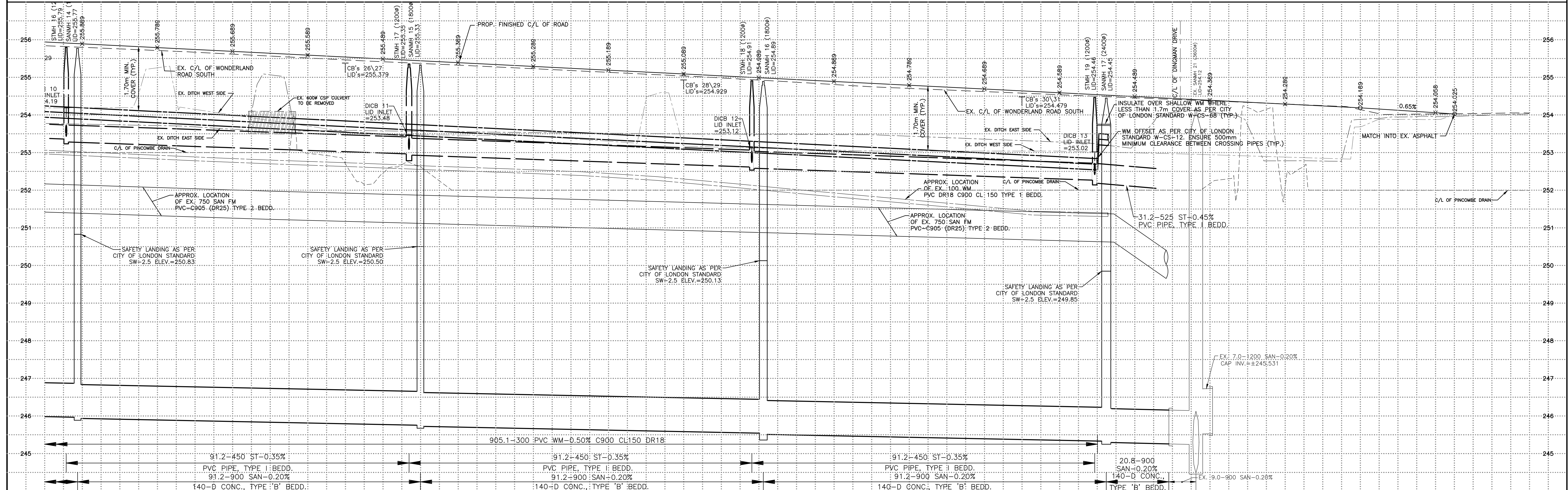
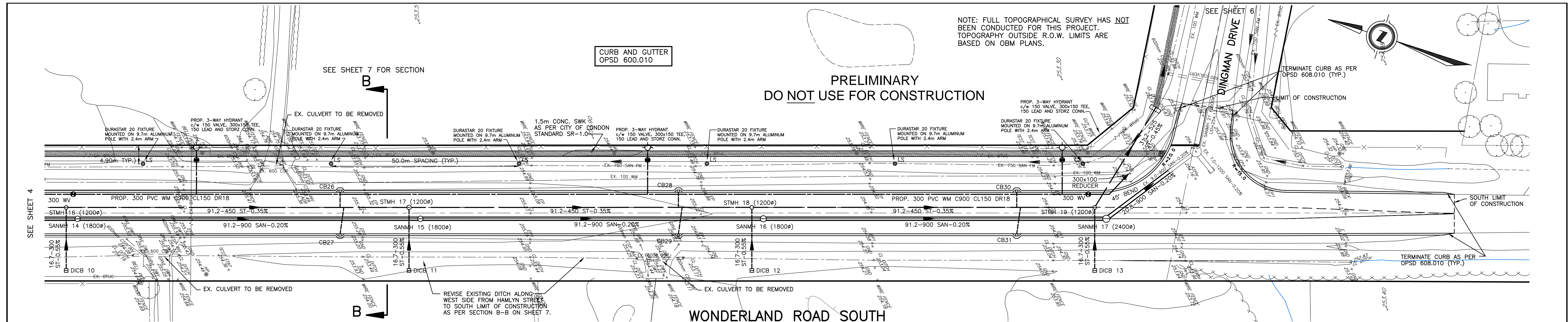
EXISTING SERVICES	DRAWING #, SOURCE	DATE	AS CONSTRUCTED SERVICES	COMPLETION	DETAILS	No.	REVISIONS	DATE	CONSULTANT	CONSULTANT OR DIVISION	ENGINEER'S STAMP	SCALE	TITLE	PROJECT No.
SAN FM & WM	CITY 21030, 21031, 21032 21033, 21034, 21035, 21036, 21037	AUG 2009			DESIGN RAB/JT DRAWN BY RAB CHECKED JT					Consulting Civil Engineers 41 Adelaide St. N., Unit 71 London, Ontario N6B 3P4 Phone (519) 672-8310 Fax (519) 672-4182 e-mail: deveng@deveng.net	 development engineering (London) Limited	SCALE - 1 : 2000 	MASTER PLAN	DEL12-087
STORM & WM	CITY 15315	JUN 1997		APPROVED DATE JULY 2012 F.BK. 957										1
														PLAN FILE No.

project: Aug 20/12-2009 DEL12-087\_CSD\_BASE.dwg





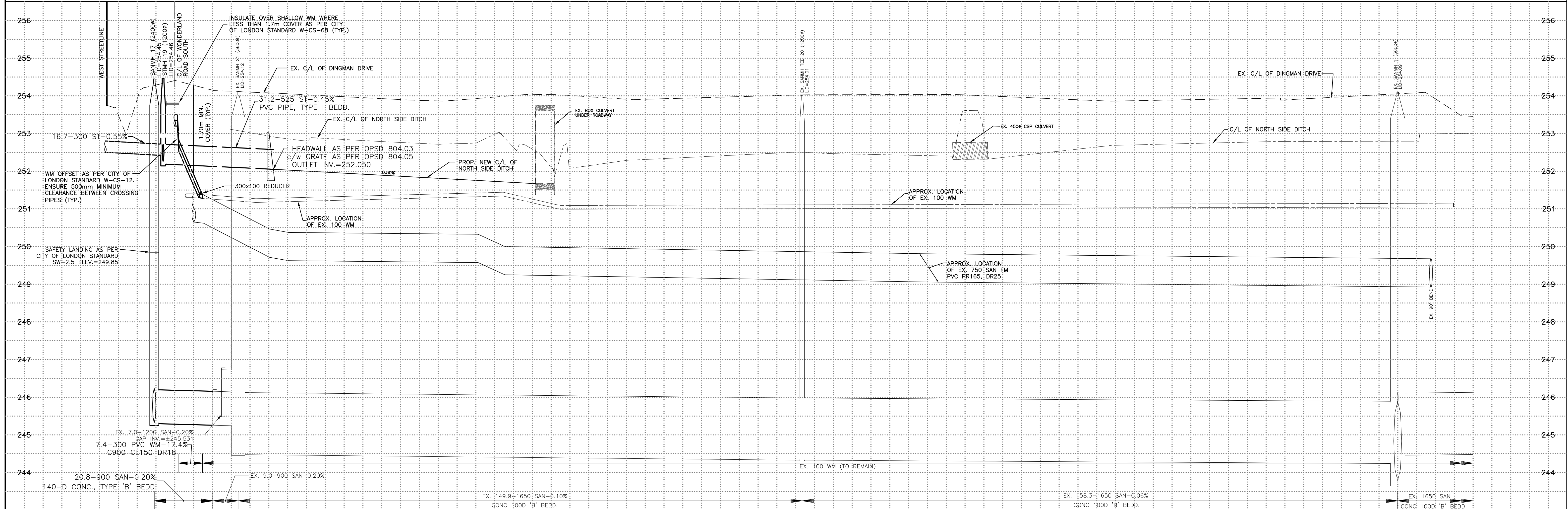
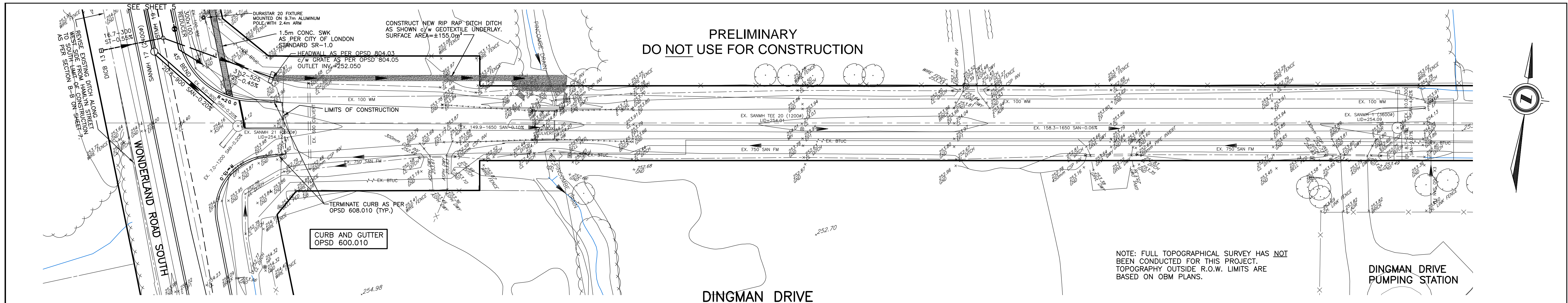




STATION	SANITARY INVERT	WATERMAIN INVERT	C/L W/ W/ INVERT
1+095.76	253.957	253.432	253.285
1+096.76	245.656	245.656	245.656
1+110			
1+140			
1+170			
1+186.86	252.963	253.432	253.285
1+189.99	245.724	245.724	245.724
1+200			
1+230			
1+260			
1+278.16	252.614	252.614	252.614
1+281.21	245.524	245.524	245.524
1+290			
1+320			
1+350			
1+369.36	252.265	252.150	252.69
1+372.43	245.330	245.330	245.300
1+380			
1+385.67	245.264	245.264	245.264
1+389.08	244.472	244.472	245.574
1+396.28	245.247	245.247	245.247
1+410			
1+440			
1+470			

EXISTING SERVICES	DRAWING #, SOURCE	DATE	AS CONSTRUCTED SERVICES	COMPLETION	DETAILS	No.	REVISIONS	DATE	CONSULTANT	CONSULTANT OR DIVISION	ENGINEER'S STAMP	SCALE	TITLE	PROJECT No.
SAN FM & WM	CITY 21030, 21031, 21032, 21033, 21034, 21035, 21036, 21037	AUG 2009			DESIGN RAB/JT DRAWN BY RAB CHECKED JT APPROVED DATE JULY 2012 F.B.K. 957					Consulting Civil Engineers 41 Adelaide St. N., Unit 71 London, Ontario N6B 3P4 Phone (519) 672-8310 Fax (519) 672-4182 e-mail: deveng@deveng.net		HORIZ. SCALE - 1 : 500 5 0 10m VERT. SCALE - 1 : 50 0.5 0 1m	WONDERLAND ROAD SOUTH: FROM 302m NORTH OF DINGMAN DRIVE TO 93m SOUTH OF DINGMAN DRIVE	DEL12-087

project: Aug 29/12-2:00pm DEL12-087\_CSD\_BASE.dwg



STATION	C/L W/ DRAIN ELEVATION	SPERM INVERT	SANITARY INVERT
0+030			
0+005.42	245.330	245.415	245.285
0+003.07	245.305	245.285	245.195
0+000			
0+007.38	245.14	245.205	245.04
0+010.14			
0+016.87	245.240	245.310	245.170
0+026.22			
0+030			
0+060			
0+090			
0+120			
0+150			
0+166.73	244.330		
0+180			
0+210			
0+240			
0+270			
0+300			
0+324.69	244.200	244.480	244.480
0+330	244.830	244.830	244.830
0+360			

EXISTING SERVICES	DRAWING #, SOURCE	DATE	AS CONSTRUCTED SERVICES	COMPLETION	DETAILS	No.	REVISIONS	DATE	CONSULTANT	CONSULTANT OR DIVISION	ENGINEER'S STAMP	SCALE	TITLE	PROJECT No.
SAN FM & WM	CITY 20670, 20671	SEPT 11/09			DESIGN RAB/JT DRAWN BY RAB CHECKED JT APPROVED DATE JULY 2012 F.B.K. 957					Consulting Civil Engineers 41 Adelaide St. N., Unit 71 London, Ontario N6B 3P4 Phone (519) 672-8310 Fax (519) 672-4182 e-mail: deveng@deveng.net		HORIZ. SCALE - 1 : 500 5 0 10m VERT. SCALE - 1 : 50 0.5 0 1m	<b>DINGMAN DRIVE: FROM WONDERLAND ROAD SOUTH TO 345m EAST OF WONDERLAND ROAD SOUTH</b>	DEL12-087
														SHEET No. 6
														PLAN FILE No.

PROJECT: Aug 29/12-2:00pm DEL12-087\_CSD\_BASE.dwg  
 SHEET: 6





