



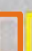


**CITY OF LONDON
WILLIAM STREET STORM SEWER OUTFALL
AND CHAMBER 13 REMOVAL**

**FIGURE 2
STUDY AREA**

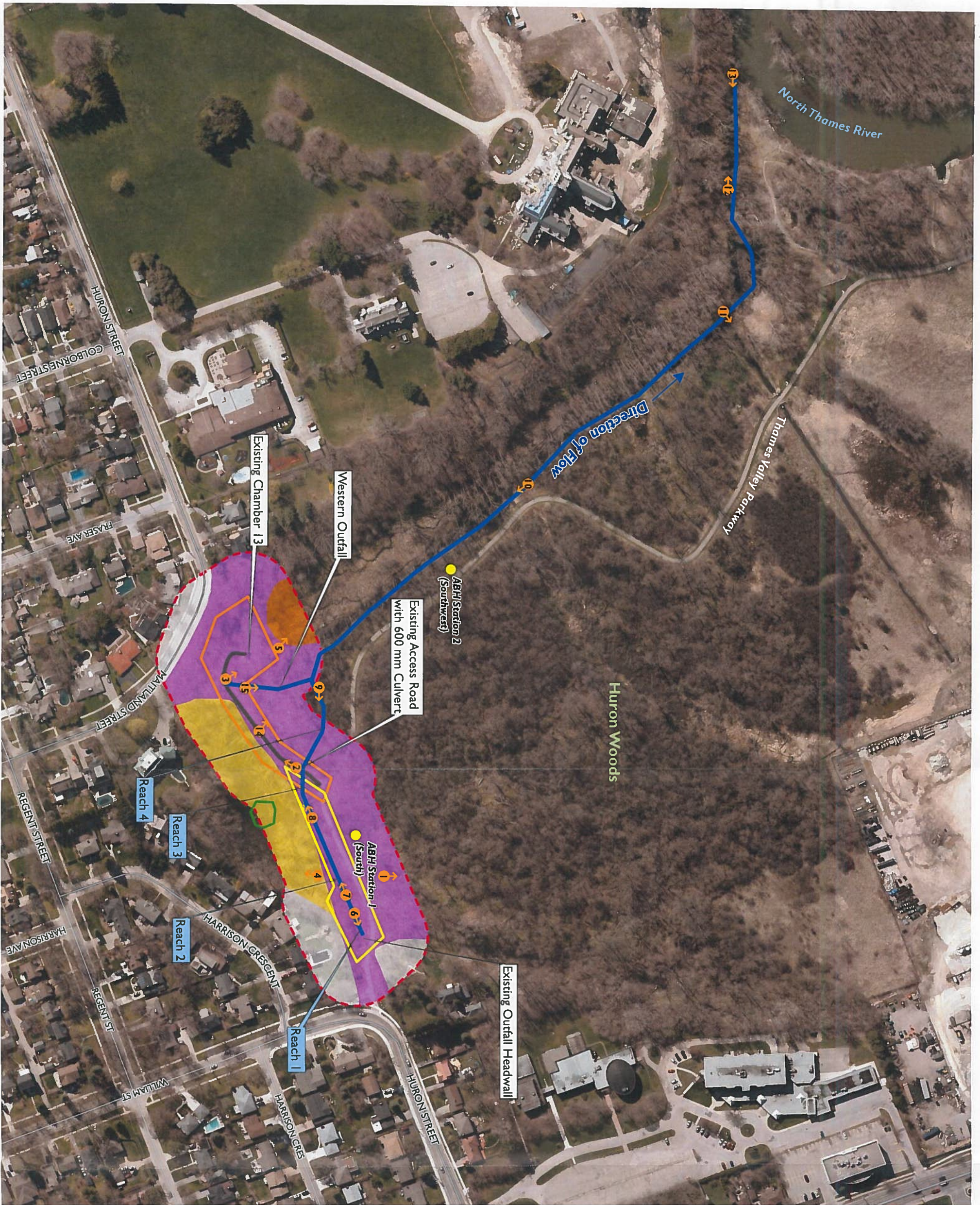
-  Access Road
-  Storm Sewer Channel
-  Detailed Study Area
-  Outfall Work Area (Approximate)
-  Chamber 13 Removal Work Area (Approximate)



MAP DRAWING INFORMATION:
DATA PROVIDED BY MNRF
MAP CREATED BY GM
MAP CHECKED BY TGD
MAP PROJECTION: NAD 1983 UTM Zone 17N



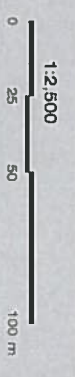
PROJECT: 164038
STATUS: DRAFT
DATE: 2018-08-08



**CITY OF LONDON
WILLIAM STREET STORM SEWER OUTFALL
AND CHAMBER 13 REMOVAL**

**FIGURE 3
NATURAL ENVIRONMENT
EXISTING CONDITIONS**

- Photo Location
 - Amphibian Breeding Habitat Survey Station
 - Storm Sewer Channel
 - Access Road
 - Detailed Study Area
 - Outfall Work Area (Approximate)
 - Chamber 13 Removal Work Area (Approximate)
 - Phragmites Patch
- Ecological Land Classification**
- CVR 1: Low Density Residential
 - MAM02: Forb Organic Meadow Marsh
 - MEM: Mixed Meadow
 - THDM2-6: Buckhorn Deciduous Shrub Thicket



1:2,500
0 25 50 100 m

MAP DRAWING INFORMATION:
DATA PROVIDED BY MNRP

MAP CREATED BY: GM
MAP CHECKED BY: TG
MAP PROJECTION: NAD 1983 UTM Zone 17N



PROJECT: 164038
STATUS: DRAFT
DATE: 2018-08-08