



York DEVELOPMENTS **zedd ARCHITECTURE**

MHBC
PLANNING
URBAN DESIGN
& LANDSCAPE
ARCHITECTURE

Proposed Draft Plan of Subdivision 3080 Bostwick Road

Tuesday, October 9, 2018

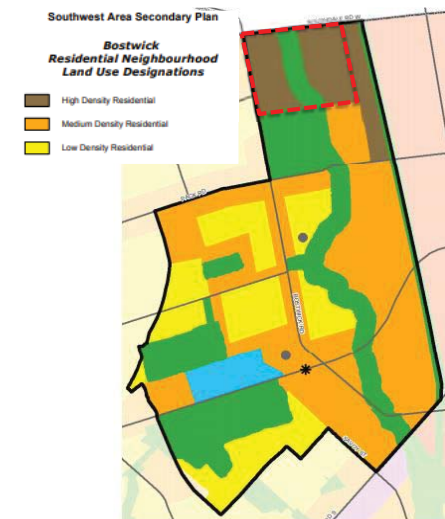
Project Vision: Master Plan Concept

Vision: Provide a integrated residential neighbourhood:

- Offering a variety of on-site amenities:
- Benefiting from close proximity to regional shopping, employment opportunities, public transit networks, recreational facilities, natural areas and major open space.

Principal Design Themes:

- Encourage Housing Choice and Diversity
- Enhance Community Activity Node
- Support Neighbourhood Connectivity

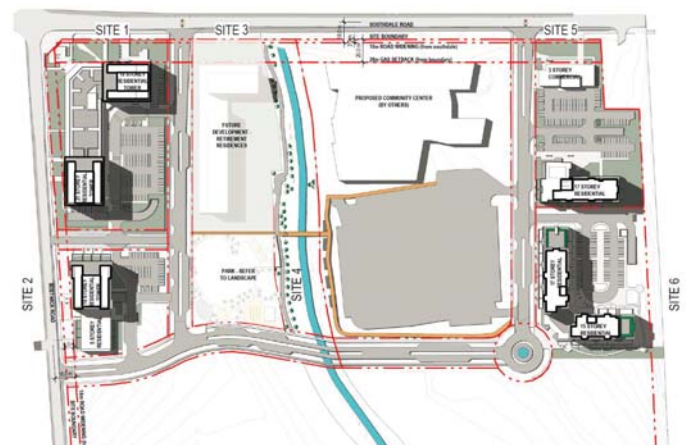


SWAP Context

- Part of Bostwick Residential Neighbourhood
- Largely Designated 'High Density Residential'
- Only HDR lands in Neighbourhood
- Limited HDR Opportunities in SWAP



Master Plan Concept



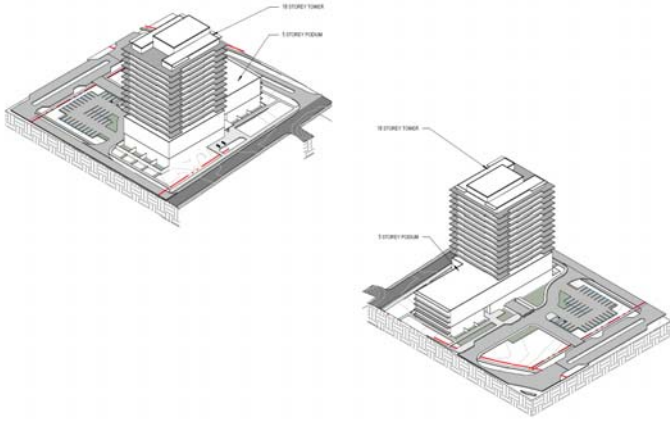
Conceptual Landscape Plan



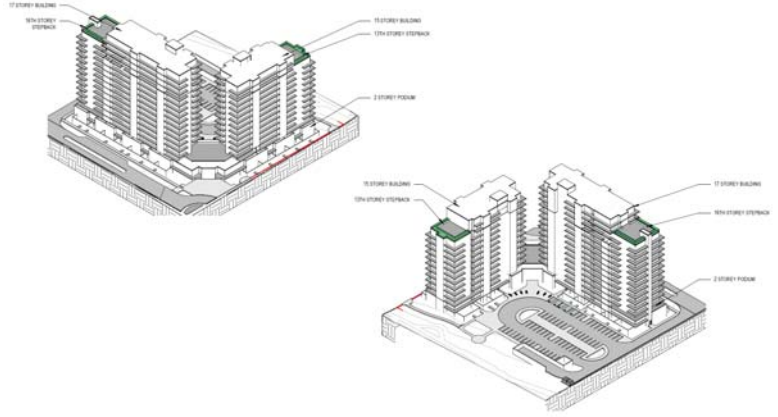
Draft Plan Layout



Perspective (Site 2)



Perspective (Site 6)



QUESTIONS?

