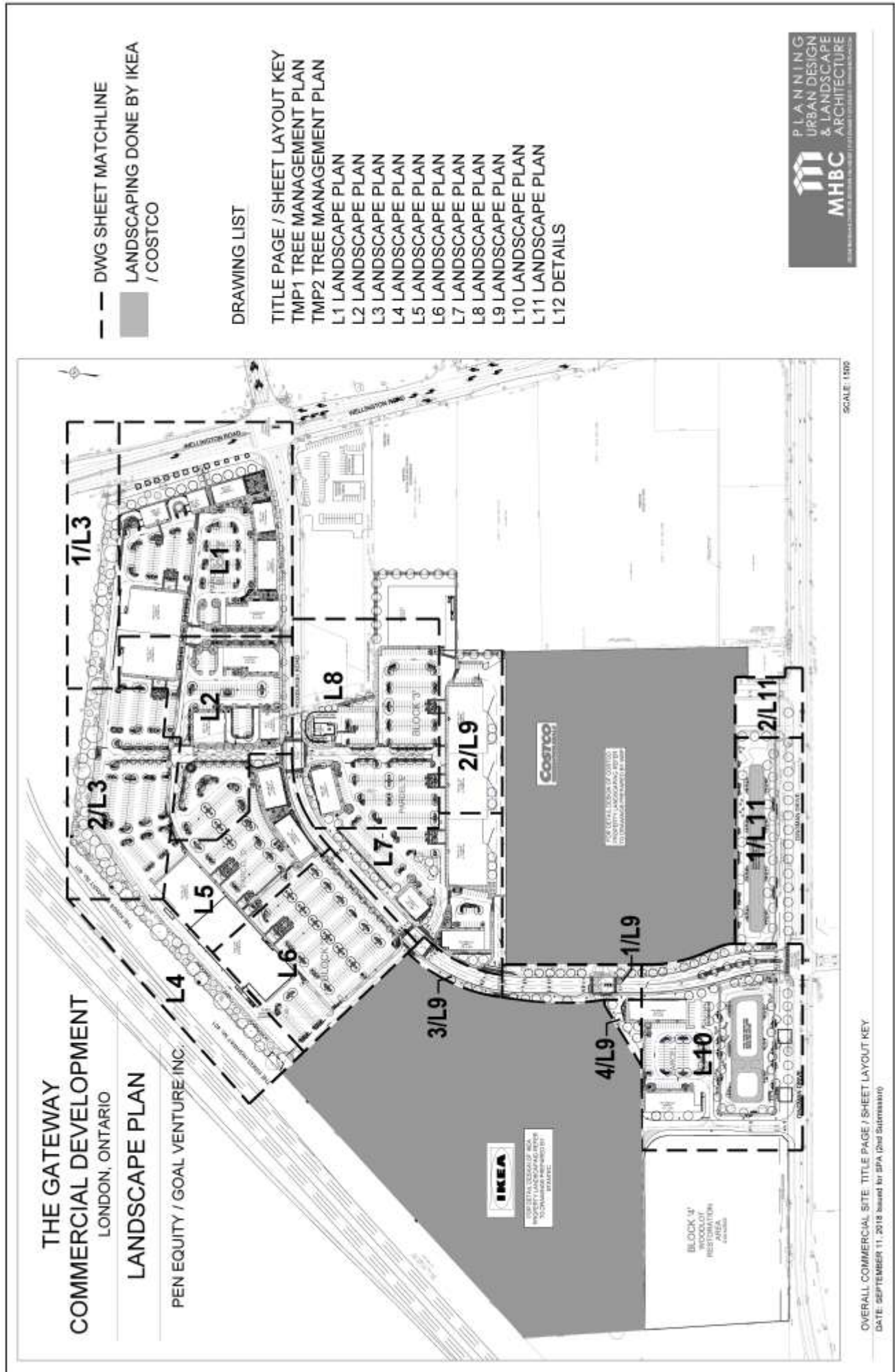


# Appendix E – Additional Drawings – Landscape Plans and Elevations



**THE GATEWAY  
COMMERCIAL DEVELOPMENT**  
LONDON, ONTARIO  
**LANDSCAPE PLAN**

PEN EQUITY / GOAL VENTURE INC.

--- DWG SHEET MATCHLINE  
 ■ LANDSCAPING DONE BY IKEA / COSTCO

**DRAWING LIST**

- TITLE PAGE / SHEET LAYOUT KEY
- TMP1 TREE MANAGEMENT PLAN
- TMP2 TREE MANAGEMENT PLAN
- L1 LANDSCAPE PLAN
- L2 LANDSCAPE PLAN
- L3 LANDSCAPE PLAN
- L4 LANDSCAPE PLAN
- L5 LANDSCAPE PLAN
- L6 LANDSCAPE PLAN
- L7 LANDSCAPE PLAN
- L8 LANDSCAPE PLAN
- L9 LANDSCAPE PLAN
- L10 LANDSCAPE PLAN
- L11 LANDSCAPE PLAN
- L12 DETAILS



SCALE: 1:500

OVERALL COMMERCIAL SITE: TITLE PAGE / SHEET LAYOUT KEY  
 DATE: SEPTEMBER 11, 2018 Issued for SFA (2nd Submission)















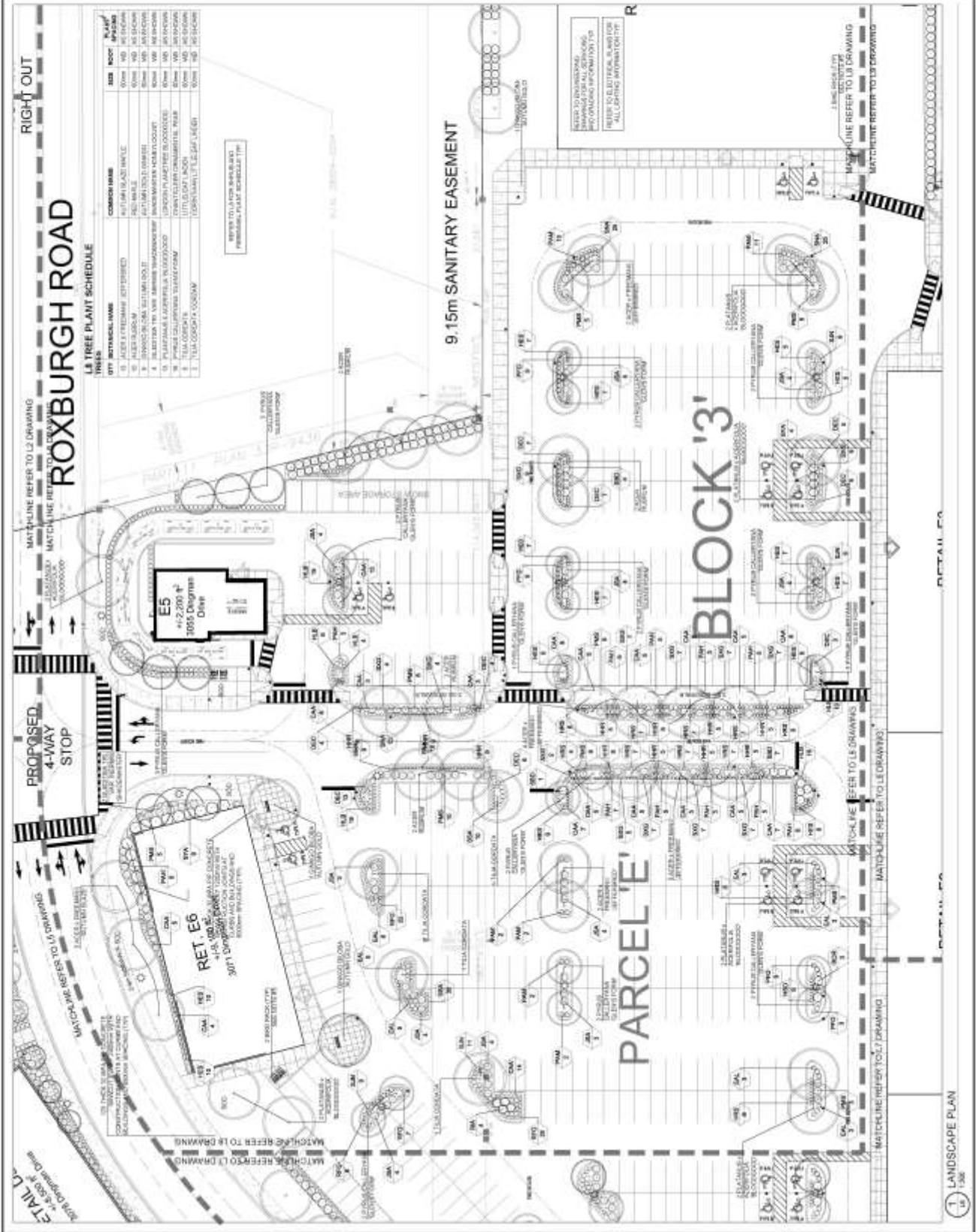












**LEGEND:**

SYMBOL	DESCRIPTION
Tree symbol	EXISTING TREES TO REMAIN
Tree symbol	PROPOSED TREES TO BE PLANTED
Plant symbol	PLANTING NOTES
Light symbol	LIGHT FIXTURES
Wall symbol	WALLS
Path symbol	PATHS
Drain symbol	DRAINS
Manhole symbol	MANHOLES
Other symbols	SEE NOTES AND SPECIFICATIONS

**NOTES:**

1. ALL LAYOUT, DIMENSIONS AND LOCATIONS SHALL BE VERIFIED ON SITE.
2. SEE PLAN FOR TREE SCHEDULES AND SPECIFICATIONS.
3. MATCHLINES REFER TO L1 DRAWING.
4. MATCHLINES REFER TO L2 DRAWING.
5. MATCHLINES REFER TO L3 DRAWING.
6. MATCHLINES REFER TO L4 DRAWING.
7. MATCHLINES REFER TO L5 DRAWING.
8. MATCHLINES REFER TO L6 DRAWING.
9. MATCHLINES REFER TO L7 DRAWING.
10. MATCHLINES REFER TO L8 DRAWING.

ALL DIMENSIONS IN METERS UNLESS OTHERWISE SPECIFIED.

DATE: 00/00/00

DRAWN BY: [Name]

CHECKED BY: [Name]

**PLANNING  
URBAN DESIGN  
& LANDSCAPE  
ARCHITECTURE**

**MHBC ARCHITECTURE**

1000 UNIVERSITY AVENUE, SUITE 200  
TORONTO, ONTARIO M5G 1R7

PEN EQUITY /  
GOAL VENTURE INC

**THE GATEWAY**  
LONDON, ON

**LANDSCAPE PLAN**

L8



**LEGEND**

	PROPOSED PLANTINGS
	EXISTING PLANTINGS
	PROPOSED PAVEMENT
	EXISTING PAVEMENT
	PROPOSED LANDSCAPING
	EXISTING LANDSCAPING
	PROPOSED FENCING
	EXISTING FENCING
	PROPOSED SIGNAGE
	EXISTING SIGNAGE
	PROPOSED UTILITIES
	EXISTING UTILITIES

**NOTES**

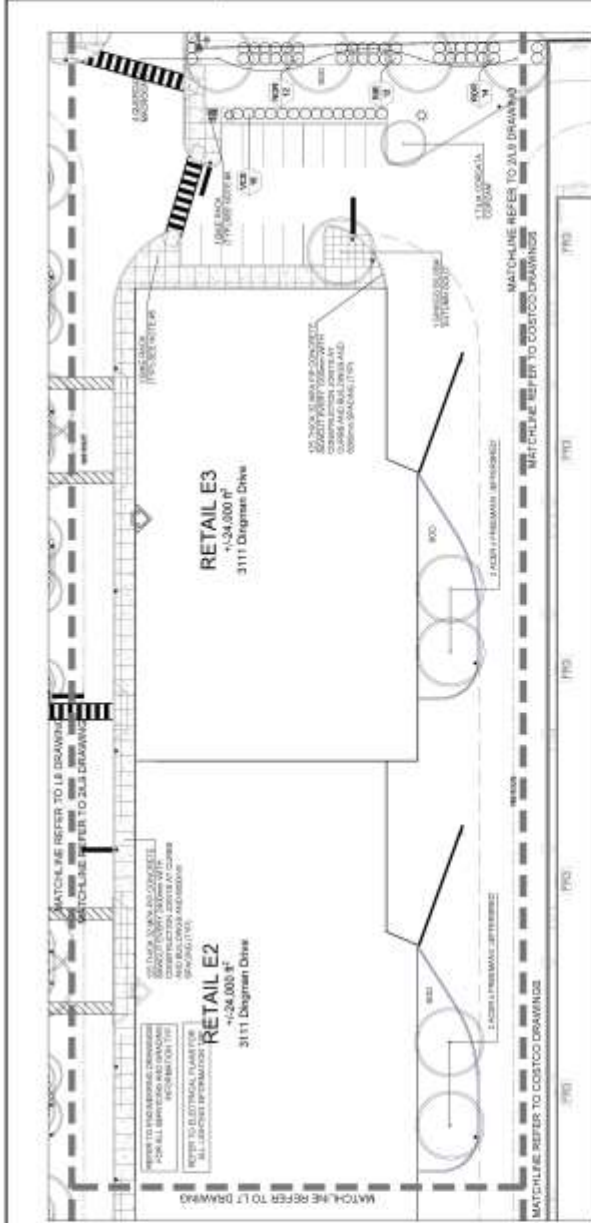
1. ALL TREE AND SHRUB SPECIES SHALL BE PLANTED AT THE END OF THE ROW AND SHALL BE MAINTAINED AT ALL TIMES.
2. ALL TREE AND SHRUB SPECIES SHALL BE PLANTED AT THE END OF THE ROW AND SHALL BE MAINTAINED AT ALL TIMES.
3. ALL TREE AND SHRUB SPECIES SHALL BE PLANTED AT THE END OF THE ROW AND SHALL BE MAINTAINED AT ALL TIMES.
4. ALL TREE AND SHRUB SPECIES SHALL BE PLANTED AT THE END OF THE ROW AND SHALL BE MAINTAINED AT ALL TIMES.
5. ALL TREE AND SHRUB SPECIES SHALL BE PLANTED AT THE END OF THE ROW AND SHALL BE MAINTAINED AT ALL TIMES.
6. ALL TREE AND SHRUB SPECIES SHALL BE PLANTED AT THE END OF THE ROW AND SHALL BE MAINTAINED AT ALL TIMES.
7. ALL TREE AND SHRUB SPECIES SHALL BE PLANTED AT THE END OF THE ROW AND SHALL BE MAINTAINED AT ALL TIMES.
8. ALL TREE AND SHRUB SPECIES SHALL BE PLANTED AT THE END OF THE ROW AND SHALL BE MAINTAINED AT ALL TIMES.
9. ALL TREE AND SHRUB SPECIES SHALL BE PLANTED AT THE END OF THE ROW AND SHALL BE MAINTAINED AT ALL TIMES.
10. ALL TREE AND SHRUB SPECIES SHALL BE PLANTED AT THE END OF THE ROW AND SHALL BE MAINTAINED AT ALL TIMES.

**PLANNING URBAN DESIGN & LANDSCAPE ARCHITECTURE**  
**MHBC ARCHITECTURE**

DATE: DECEMBER 2017  
 DRAWN BY: [Name]  
 CHECKED BY: [Name]  
 PROJECT: [Name]  
 SHEET: [Name]

**THE GATEWAY**  
 LANDSCAPE PLAN

**L9**

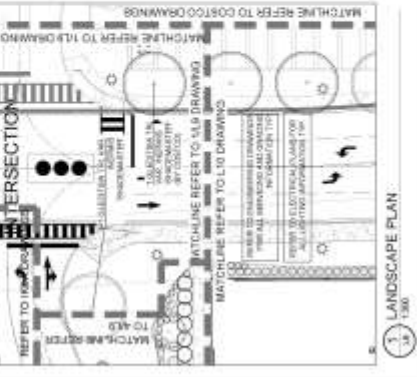
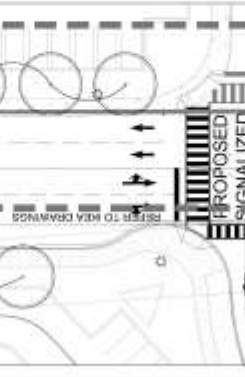
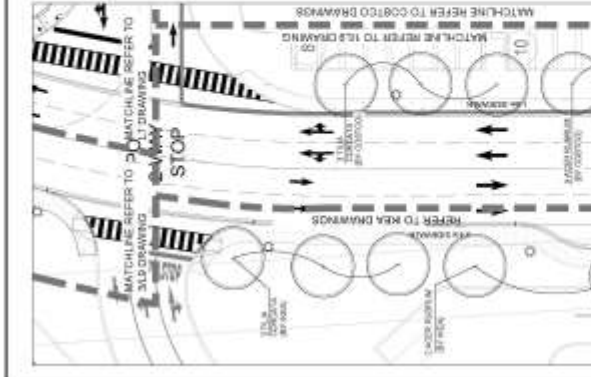


**1.9 TREE PLANT SCHEDULE**

KEY	UTY	BOTANICAL NAME	SIZE	ROOT	PLANT	WASING
1	UTY	FRAXINUS AMERICANA	100%	100%	100%	100%
2	UTY	QUERCUS ALBA	100%	100%	100%	100%
3	UTY	PLATANUS OCCIDENTALIS	100%	100%	100%	100%
4	UTY	ACER FRAXINIFOLIUM	100%	100%	100%	100%
5	UTY	NYCTAGINIA GLAUCO-CALNEA	100%	100%	100%	100%
6	UTY	NYCTAGINIA GLAUCO-CALNEA	100%	100%	100%	100%
7	UTY	NYCTAGINIA GLAUCO-CALNEA	100%	100%	100%	100%
8	UTY	NYCTAGINIA GLAUCO-CALNEA	100%	100%	100%	100%
9	UTY	NYCTAGINIA GLAUCO-CALNEA	100%	100%	100%	100%
10	UTY	NYCTAGINIA GLAUCO-CALNEA	100%	100%	100%	100%

**1.9 PERENNIALS / GRASSES SCHEDULE**

KEY	UTY	BOTANICAL NAME	SIZE	ROOT	PLANT	WASING
1	UTY	PERENNIAL NAME	100%	100%	100%	100%
2	UTY	PERENNIAL NAME	100%	100%	100%	100%
3	UTY	PERENNIAL NAME	100%	100%	100%	100%
4	UTY	PERENNIAL NAME	100%	100%	100%	100%
5	UTY	PERENNIAL NAME	100%	100%	100%	100%
6	UTY	PERENNIAL NAME	100%	100%	100%	100%
7	UTY	PERENNIAL NAME	100%	100%	100%	100%
8	UTY	PERENNIAL NAME	100%	100%	100%	100%
9	UTY	PERENNIAL NAME	100%	100%	100%	100%
10	UTY	PERENNIAL NAME	100%	100%	100%	100%



**LANDSCAPE PLAN**  
 1:300

**LANDSCAPE PLAN**  
 1:300

**LANDSCAPE PLAN**  
 1:300

















Copyright Reserved  
 All rights reserved. No part of this document may be reproduced, stored in a retrieval system, or transmitted in any form or by any means, electronic, mechanical, photocopying, recording, or by any information storage and retrieval system, without the prior written permission of Stantec Inc.

**Consultants:**  
 ARCHITECTURE: Stantec Architecture Ltd.  
 CIVIL ENGINEERING: Stantec Consulting Ltd.  
 ELECTRICAL ENGINEERING: Stantec Consulting Ltd.  
 MECHANICAL ENGINEERING: Stantec Consulting Ltd.  
 PLUMBING ENGINEERING: Stantec Consulting Ltd.  
 STRUCTURAL ENGINEERING: Stantec Consulting Ltd.  
 LANDSCAPE ARCHITECTURE: Stantec Consulting Ltd.  
 ENVIRONMENTAL ENGINEERING: Stantec Consulting Ltd.  
 GEOTECHNICAL ENGINEERING: Stantec Consulting Ltd.  
 TRAFFIC ENGINEERING: Stantec Consulting Ltd.  
 WATER ENGINEERING: Stantec Consulting Ltd.  
 CONSTRUCTION MANAGEMENT: Stantec Consulting Ltd.  
 PROJECT MANAGEMENT: Stantec Consulting Ltd.

**CLIENT:**  
 IKEA PROPERTIES LIMITED  
 3100 SHEPPARD AVENUE EAST  
 UNIT 101  
 SCARBOROUGH, ONTARIO M1S 4T4

**PROJECT:**  
 IKEA STORE  
 100 SHEPPARD AVENUE EAST  
 SCARBOROUGH, ONTARIO M1S 4T4

**DATE:**  
 2018.05.15



NO.	REVISION	DATE	BY	CHKD
1	ISSUE FOR PERMITTING	2018.05.15	JL	JK
2	ISSUE FOR CONSTRUCTION	2018.05.15	JL	JK
3	ISSUE FOR CONSTRUCTION	2018.05.15	JL	JK
4	ISSUE FOR CONSTRUCTION	2018.05.15	JL	JK



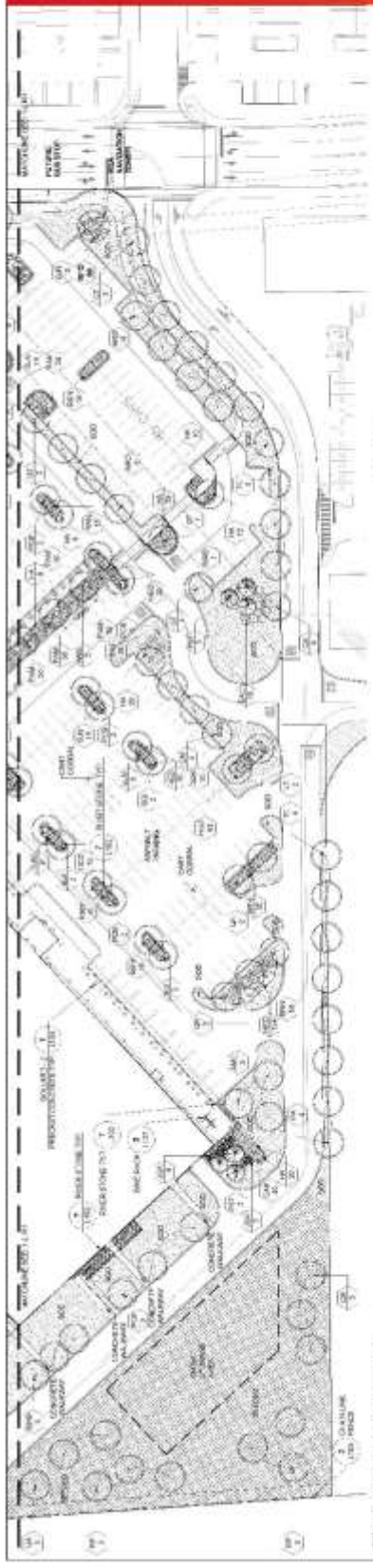
**PRELIMINARY IFC  
 NOT FOR CONSTRUCTION**  
 This document is preliminary and not for construction. It is subject to change without notice.

**Client / Project:**  
 IKEA PROPERTIES LIMITED  
 IKEA GAMMA  
 100 SHEPPARD AVENUE EAST  
 SCARBOROUGH, ONTARIO M1S 4T4

**LANDSCAPE OVERALL PLAN**

**Project:** IKEA STORE  
**Location:** 100 SHEPPARD AVENUE EAST, SCARBOROUGH, ONTARIO M1S 4T4  
**Drawn By:** JL  
**Reviewed By:** JK  
**Date:** 2018.05.15

L102

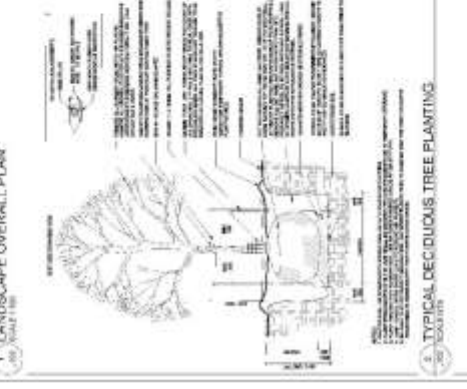
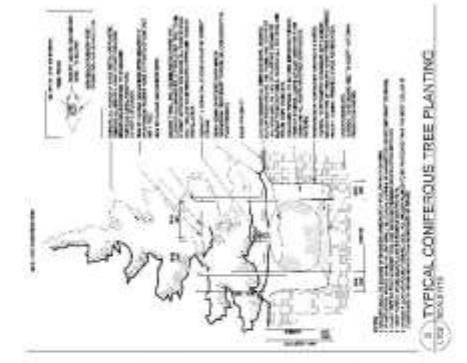


**NOTES:**

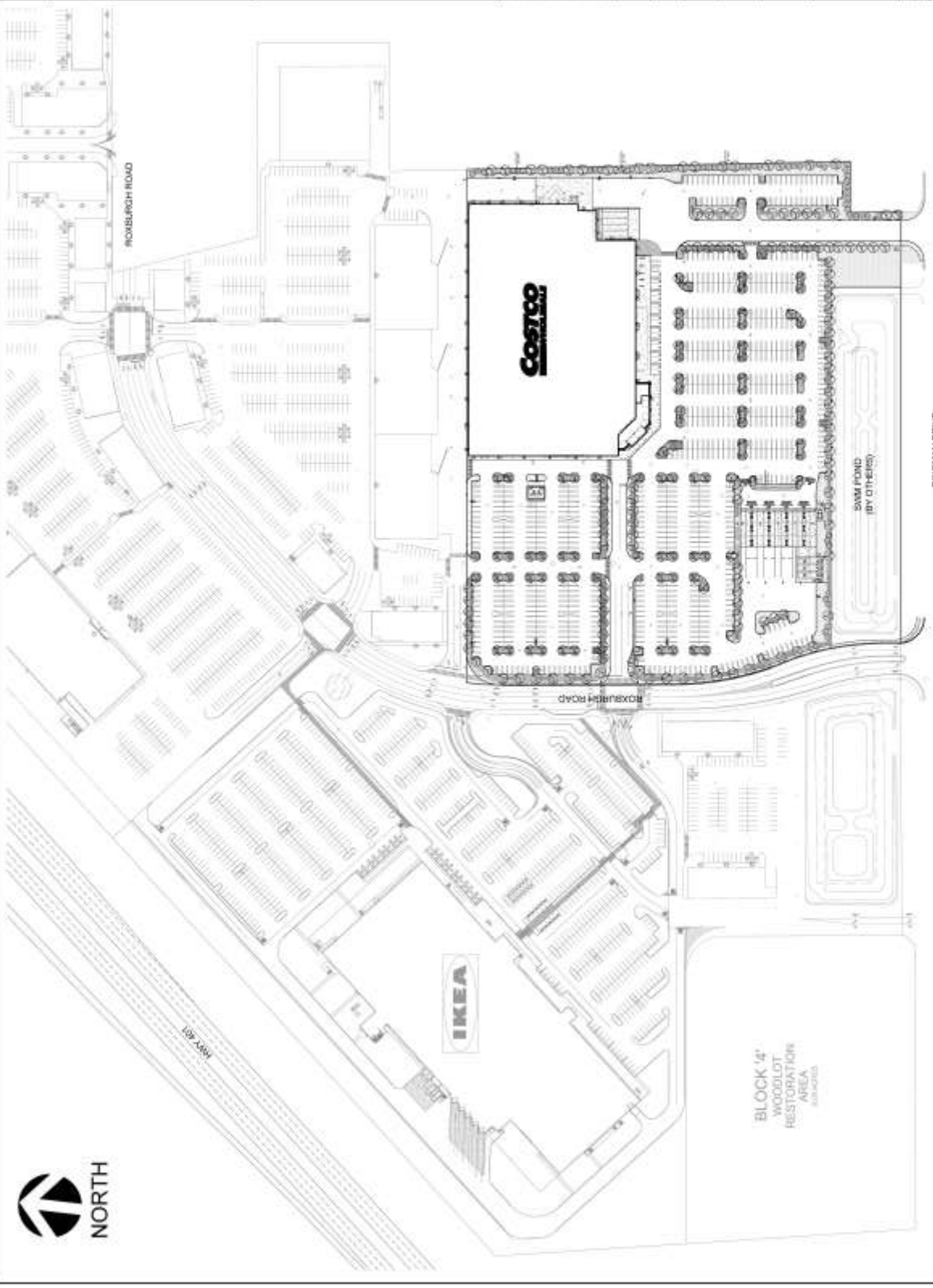
1. All dimensions are in meters unless otherwise specified.
2. All elevations are in meters unless otherwise specified.
3. All materials shall be as specified in the schedule of materials.
4. All work shall be in accordance with the Ontario Building Code and all applicable municipal by-laws.
5. All work shall be in accordance with the Ontario Land Use Act and all applicable municipal by-laws.
6. All work shall be in accordance with the Ontario Environmental Protection Act and all applicable municipal by-laws.
7. All work shall be in accordance with the Ontario Heritage Act and all applicable municipal by-laws.
8. All work shall be in accordance with the Ontario Planning Act and all applicable municipal by-laws.
9. All work shall be in accordance with the Ontario Municipal Act and all applicable municipal by-laws.
10. All work shall be in accordance with the Ontario Planning Act and all applicable municipal by-laws.
11. All work shall be in accordance with the Ontario Planning Act and all applicable municipal by-laws.
12. All work shall be in accordance with the Ontario Planning Act and all applicable municipal by-laws.
13. All work shall be in accordance with the Ontario Planning Act and all applicable municipal by-laws.
14. All work shall be in accordance with the Ontario Planning Act and all applicable municipal by-laws.
15. All work shall be in accordance with the Ontario Planning Act and all applicable municipal by-laws.
16. All work shall be in accordance with the Ontario Planning Act and all applicable municipal by-laws.
17. All work shall be in accordance with the Ontario Planning Act and all applicable municipal by-laws.
18. All work shall be in accordance with the Ontario Planning Act and all applicable municipal by-laws.
19. All work shall be in accordance with the Ontario Planning Act and all applicable municipal by-laws.
20. All work shall be in accordance with the Ontario Planning Act and all applicable municipal by-laws.

**LEGEND:**

- 1. PERENNIAL GRASSES/GROUNDCOVERS PLANTING
- 2. TYPICAL DECIDUOUS TREE PLANTING
- 3. TYPICAL CONIFEROUS TREE PLANTING
- 4. TYPICAL SHRUB PLANTING
- 5. PERENNIAL GRASSES/GROUNDCOVERS PLANTING
- 6. TYPICAL DECIDUOUS TREE PLANTING
- 7. TYPICAL CONIFEROUS TREE PLANTING
- 8. TYPICAL SHRUB PLANTING



100 SHEPPARD AVENUE EAST  
 SCARBOROUGH, ONTARIO M1S 4T4  
 CONCRETE SIDEWALK  
 RIVERSTONE ON GRADE



**Costco**  
LONDON, CATWING  
NEW WAREHOUSE AND GAS BAR

**COSTCO**  
WHOLESALE  
CORPORATION  
1000 WEST 12TH AVENUE  
DENVER, CO 80202

PROJECT LOCATION  
CROSSING STREET  
NORTH

**LEGEND**

- PROPOSED ECOLOGICAL AREA
- PROPOSED COMPACTED AREA
- PROPOSED DRIVEWAY
- PROPOSED IMPERVIOUS SURFACE
- PROPOSED GRASS
- PROPOSED PAVED AREA
- PROPERTY LINE

1. PROJECT AREA	20. 11.00.00
2. PROJECT AREA	21. 11.00.00
3. PROJECT AREA	22. 11.00.00
4. PROJECT AREA	23. 11.00.00
5. PROJECT AREA	24. 11.00.00

**COSTCO WHOLESALE**

**CITY OF LONDON**

**COSTCO SOUTH LONDON  
NEW WAREHOUSE AND GAS BAR**  
2023.07

**OVERALL LANDSCAPE  
PLAN AND NOTES**

DATE	BY	SCALE	NO.	REVISION	DATE
1. 1. 2023	WSP	1:1	LA-1		10/03/2023

PROJECT NUMBER: 19M-00195-01-R01

SCALE: LA-1





LONDON, ONTARIO  
NEW WAREHOUSE AND GAS BAR

**COSTCO  
WHOLESALE  
CORPORATION**



**LEGEND**

- PROPOSED RESIDENTIAL TREE
- PROPOSED COMMERCIAL TREE
- PROPOSED OPEN SPACE
- PROPOSED ENVIRONMENTAL SENSITIVE AREA
- PROPOSED UTILITY
- PROPERTY LINE
- FENCING



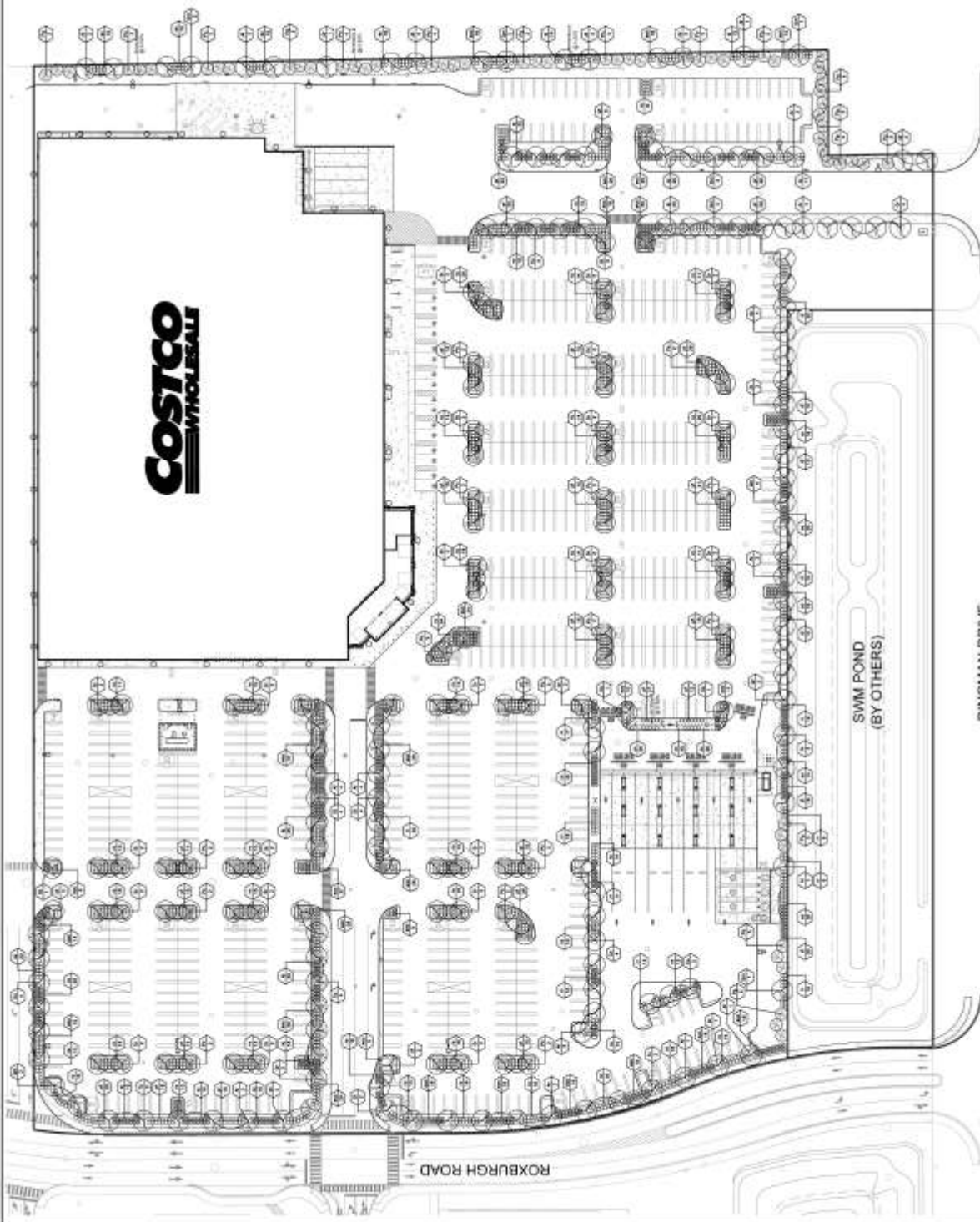
DATE	BY	DESCRIPTION

**COSTCO WHOLESALE**  
**CITY OF LONDON**  
**COSTCO SOUTH LONDON  
NEW WAREHOUSE AND GAS BAR**  
**LANDSCAPE PLAN**



NO.	DATE	REVISION

18M-00160-01-REV1  
OCTOBER 2010  
LA-2



SWM POND  
(BY OTHERS)

DINGMAN DRIVE

ROXBURGH ROAD

# Retail D5, Similar to D4, E6, E7, & E8

**TURNER TELESCOPE**

1. GENERAL NOTES  
 2. ARCHITECTURAL  
 3. STRUCTURAL  
 4. MECHANICAL, ELECTRICAL, PLUMBING  
 5. FINISHES  
 6. SPECIALTIES  
 7. ENERGY EFFICIENCY  
 8. SUSTAINABILITY  
 9. ACCESSIBILITY  
 10. SIGNAGE  
 11. SECURITY  
 12. FURNITURE  
 13. EQUIPMENT  
 14. UTILITIES  
 15. EXTERIOR  
 16. INTERIOR  
 17. FINISHES  
 18. MATERIALS  
 19. CONSTRUCTION  
 20. MAINTENANCE

**PENEQUITY**

RETAIL D5 - PHASE 3 - FINISH 2024

DATE: 10/15/2023  
 DRAWN BY: [Name]  
 CHECKED BY: [Name]  
 PROJECT NO: [Number]

Architectural elevations showing building facade with 'SIGNAGE' labels. Includes a legend for materials and finishes.

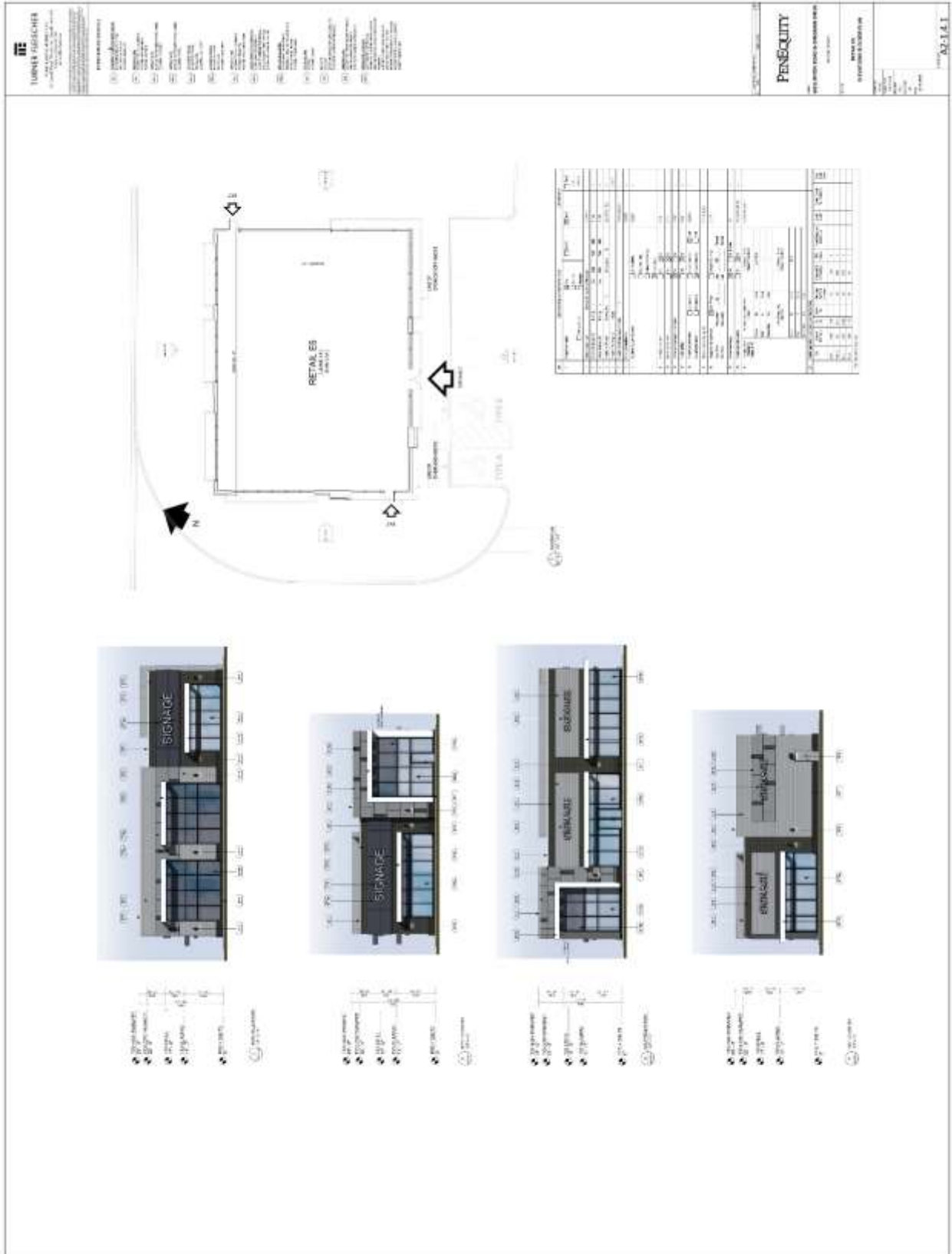
Site plan showing building layout, entrances, and signage locations. Includes a north arrow and scale.

Architectural elevations showing building facade with 'SIGNAGE' labels. Includes a legend for materials and finishes.

Site plan showing building layout, entrances, and signage locations. Includes a north arrow and scale.



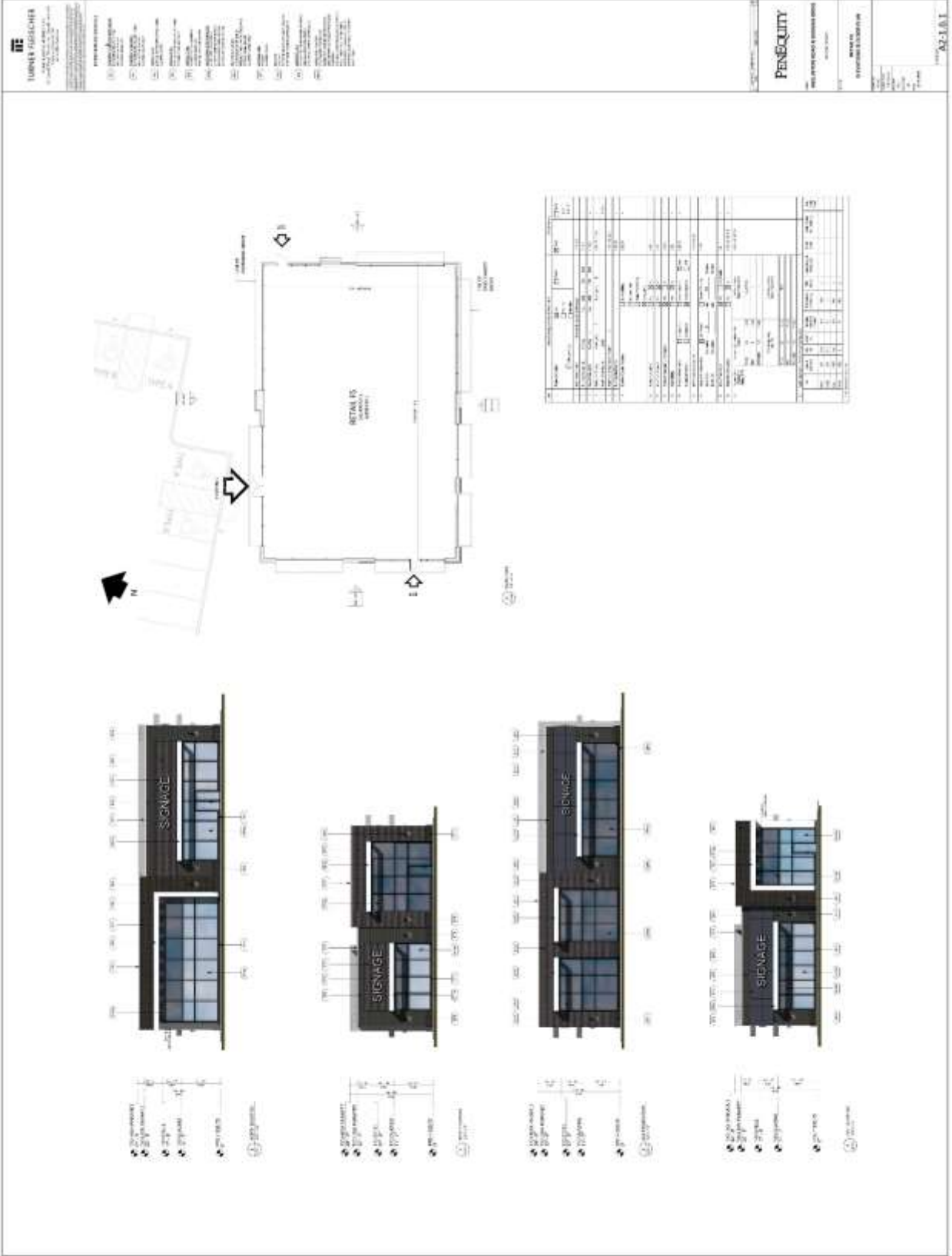
# Retail E5







# Retail F5



**TURNER BROSCHER**  
ARCHITECTS  
1000 BROADWAY, SUITE 2000  
NEW YORK, NY 10018  
TEL: 212 691 0000  
WWW.TURNERBROSCHER.COM

- (A) 2" x 4" STUDS
- (B) 2" x 6" STUDS
- (C) 2" x 8" STUDS
- (D) 2" x 10" STUDS
- (E) 2" x 12" STUDS
- (F) 4" x 4" STUDS
- (G) 4" x 6" STUDS
- (H) 4" x 8" STUDS
- (I) 4" x 10" STUDS
- (J) 4" x 12" STUDS
- (K) 6" x 6" STUDS
- (L) 6" x 8" STUDS
- (M) 6" x 10" STUDS
- (N) 6" x 12" STUDS
- (O) 8" x 8" STUDS
- (P) 8" x 10" STUDS
- (Q) 8" x 12" STUDS
- (R) 10" x 10" STUDS
- (S) 10" x 12" STUDS
- (T) 12" x 12" STUDS
- (U) 12" x 14" STUDS
- (V) 12" x 16" STUDS
- (W) 12" x 18" STUDS
- (X) 12" x 20" STUDS
- (Y) 12" x 24" STUDS
- (Z) 14" x 14" STUDS
- (AA) 14" x 16" STUDS
- (AB) 14" x 18" STUDS
- (AC) 14" x 20" STUDS
- (AD) 14" x 24" STUDS
- (AE) 16" x 16" STUDS
- (AF) 16" x 18" STUDS
- (AG) 16" x 20" STUDS
- (AH) 16" x 24" STUDS
- (AI) 18" x 18" STUDS
- (AJ) 18" x 20" STUDS
- (AK) 18" x 24" STUDS
- (AL) 20" x 20" STUDS
- (AM) 20" x 24" STUDS
- (AN) 24" x 24" STUDS
- (AO) 24" x 30" STUDS
- (AP) 30" x 30" STUDS
- (AQ) 30" x 36" STUDS
- (AR) 36" x 36" STUDS
- (AS) 36" x 42" STUDS
- (AT) 42" x 42" STUDS
- (AU) 42" x 48" STUDS
- (AV) 48" x 48" STUDS
- (AW) 48" x 54" STUDS
- (AX) 54" x 54" STUDS
- (AY) 54" x 60" STUDS
- (AZ) 60" x 60" STUDS
- (BA) 60" x 66" STUDS
- (BB) 66" x 66" STUDS
- (BC) 66" x 72" STUDS
- (BD) 72" x 72" STUDS
- (BE) 72" x 78" STUDS
- (BF) 78" x 78" STUDS
- (BG) 78" x 84" STUDS
- (BH) 84" x 84" STUDS
- (BI) 84" x 90" STUDS
- (BJ) 90" x 90" STUDS
- (BK) 90" x 96" STUDS
- (BL) 96" x 96" STUDS
- (BM) 96" x 102" STUDS
- (BN) 102" x 102" STUDS
- (BO) 102" x 108" STUDS
- (BP) 108" x 108" STUDS
- (BQ) 108" x 114" STUDS
- (BR) 114" x 114" STUDS
- (BS) 114" x 120" STUDS
- (BT) 120" x 120" STUDS
- (BU) 120" x 126" STUDS
- (BV) 126" x 126" STUDS
- (BV) 126" x 132" STUDS
- (BW) 132" x 132" STUDS
- (BX) 132" x 138" STUDS
- (BY) 138" x 138" STUDS
- (BY) 138" x 144" STUDS
- (BZ) 144" x 144" STUDS
- (CZ) 144" x 150" STUDS
- (CA) 150" x 150" STUDS
- (CA) 150" x 156" STUDS
- (CB) 156" x 156" STUDS
- (CB) 156" x 162" STUDS
- (CC) 162" x 162" STUDS
- (CC) 162" x 168" STUDS
- (CD) 168" x 168" STUDS
- (CD) 168" x 174" STUDS
- (CE) 174" x 174" STUDS
- (CE) 174" x 180" STUDS
- (CF) 180" x 180" STUDS
- (CF) 180" x 186" STUDS
- (CG) 186" x 186" STUDS
- (CG) 186" x 192" STUDS
- (CH) 192" x 192" STUDS
- (CH) 192" x 198" STUDS
- (CI) 198" x 198" STUDS
- (CI) 198" x 204" STUDS
- (CJ) 204" x 204" STUDS
- (CJ) 204" x 210" STUDS
- (CK) 210" x 210" STUDS
- (CK) 210" x 216" STUDS
- (CL) 216" x 216" STUDS
- (CL) 216" x 222" STUDS
- (CM) 222" x 222" STUDS
- (CM) 222" x 228" STUDS
- (CN) 228" x 228" STUDS
- (CN) 228" x 234" STUDS
- (CO) 234" x 234" STUDS
- (CO) 234" x 240" STUDS
- (CP) 240" x 240" STUDS
- (CP) 240" x 246" STUDS
- (CQ) 246" x 246" STUDS
- (CQ) 246" x 252" STUDS
- (CR) 252" x 252" STUDS
- (CR) 252" x 258" STUDS
- (CS) 258" x 258" STUDS
- (CS) 258" x 264" STUDS
- (CT) 264" x 264" STUDS
- (CT) 264" x 270" STUDS
- (CU) 270" x 270" STUDS
- (CU) 270" x 276" STUDS
- (CV) 276" x 276" STUDS
- (CV) 276" x 282" STUDS
- (CW) 282" x 282" STUDS
- (CW) 282" x 288" STUDS
- (CX) 288" x 288" STUDS
- (CX) 288" x 294" STUDS
- (CY) 294" x 294" STUDS
- (CY) 294" x 300" STUDS
- (CZ) 300" x 300" STUDS
- (CZ) 300" x 306" STUDS
- (DA) 306" x 306" STUDS
- (DA) 306" x 312" STUDS
- (DB) 312" x 312" STUDS
- (DB) 312" x 318" STUDS
- (DC) 318" x 318" STUDS
- (DC) 318" x 324" STUDS
- (DD) 324" x 324" STUDS
- (DD) 324" x 330" STUDS
- (DE) 330" x 330" STUDS
- (DE) 330" x 336" STUDS
- (DF) 336" x 336" STUDS
- (DF) 336" x 342" STUDS
- (DG) 342" x 342" STUDS
- (DG) 342" x 348" STUDS
- (DH) 348" x 348" STUDS
- (DH) 348" x 354" STUDS
- (DI) 354" x 354" STUDS
- (DI) 354" x 360" STUDS
- (DJ) 360" x 360" STUDS
- (DJ) 360" x 366" STUDS
- (DK) 366" x 366" STUDS
- (DK) 366" x 372" STUDS
- (DL) 372" x 372" STUDS
- (DL) 372" x 378" STUDS
- (DM) 378" x 378" STUDS
- (DM) 378" x 384" STUDS
- (DN) 384" x 384" STUDS
- (DN) 384" x 390" STUDS
- (DO) 390" x 390" STUDS
- (DO) 390" x 396" STUDS
- (DP) 396" x 396" STUDS
- (DP) 396" x 402" STUDS
- (DQ) 402" x 402" STUDS
- (DQ) 402" x 408" STUDS
- (DR) 408" x 408" STUDS
- (DR) 408" x 414" STUDS
- (DS) 414" x 414" STUDS
- (DS) 414" x 420" STUDS
- (DT) 420" x 420" STUDS
- (DT) 420" x 426" STUDS
- (DU) 426" x 426" STUDS
- (DU) 426" x 432" STUDS
- (DV) 432" x 432" STUDS
- (DV) 432" x 438" STUDS
- (DV) 432" x 444" STUDS
- (DV) 432" x 450" STUDS
- (DV) 432" x 456" STUDS
- (DV) 432" x 462" STUDS
- (DV) 432" x 468" STUDS
- (DV) 432" x 474" STUDS
- (DV) 432" x 480" STUDS
- (DV) 432" x 486" STUDS
- (DV) 432" x 492" STUDS
- (DV) 432" x 498" STUDS
- (DV) 432" x 504" STUDS
- (DV) 432" x 510" STUDS
- (DV) 432" x 516" STUDS
- (DV) 432" x 522" STUDS
- (DV) 432" x 528" STUDS
- (DV) 432" x 534" STUDS
- (DV) 432" x 540" STUDS
- (DV) 432" x 546" STUDS
- (DV) 432" x 552" STUDS
- (DV) 432" x 558" STUDS
- (DV) 432" x 564" STUDS
- (DV) 432" x 570" STUDS
- (DV) 432" x 576" STUDS
- (DV) 432" x 582" STUDS
- (DV) 432" x 588" STUDS
- (DV) 432" x 594" STUDS
- (DV) 432" x 600" STUDS
- (DV) 432" x 606" STUDS
- (DV) 432" x 612" STUDS
- (DV) 432" x 618" STUDS
- (DV) 432" x 624" STUDS
- (DV) 432" x 630" STUDS
- (DV) 432" x 636" STUDS
- (DV) 432" x 642" STUDS
- (DV) 432" x 648" STUDS
- (DV) 432" x 654" STUDS
- (DV) 432" x 660" STUDS
- (DV) 432" x 666" STUDS
- (DV) 432" x 672" STUDS
- (DV) 432" x 678" STUDS
- (DV) 432" x 684" STUDS
- (DV) 432" x 690" STUDS
- (DV) 432" x 696" STUDS
- (DV) 432" x 702" STUDS
- (DV) 432" x 708" STUDS
- (DV) 432" x 714" STUDS
- (DV) 432" x 720" STUDS
- (DV) 432" x 726" STUDS
- (DV) 432" x 732" STUDS
- (DV) 432" x 738" STUDS
- (DV) 432" x 744" STUDS
- (DV) 432" x 750" STUDS
- (DV) 432" x 756" STUDS
- (DV) 432" x 762" STUDS
- (DV) 432" x 768" STUDS
- (DV) 432" x 774" STUDS
- (DV) 432" x 780" STUDS
- (DV) 432" x 786" STUDS
- (DV) 432" x 792" STUDS
- (DV) 432" x 798" STUDS
- (DV) 432" x 804" STUDS
- (DV) 432" x 810" STUDS
- (DV) 432" x 816" STUDS
- (DV) 432" x 822" STUDS
- (DV) 432" x 828" STUDS
- (DV) 432" x 834" STUDS
- (DV) 432" x 840" STUDS
- (DV) 432" x 846" STUDS
- (DV) 432" x 852" STUDS
- (DV) 432" x 858" STUDS
- (DV) 432" x 864" STUDS
- (DV) 432" x 870" STUDS
- (DV) 432" x 876" STUDS
- (DV) 432" x 882" STUDS
- (DV) 432" x 888" STUDS
- (DV) 432" x 894" STUDS
- (DV) 432" x 900" STUDS
- (DV) 432" x 906" STUDS
- (DV) 432" x 912" STUDS
- (DV) 432" x 918" STUDS
- (DV) 432" x 924" STUDS
- (DV) 432" x 930" STUDS
- (DV) 432" x 936" STUDS
- (DV) 432" x 942" STUDS
- (DV) 432" x 948" STUDS
- (DV) 432" x 954" STUDS
- (DV) 432" x 960" STUDS
- (DV) 432" x 966" STUDS
- (DV) 432" x 972" STUDS
- (DV) 432" x 978" STUDS
- (DV) 432" x 984" STUDS
- (DV) 432" x 990" STUDS
- (DV) 432" x 996" STUDS
- (DV) 432" x 1002" STUDS
- (DV) 432" x 1008" STUDS
- (DV) 432" x 1014" STUDS
- (DV) 432" x 1020" STUDS
- (DV) 432" x 1026" STUDS
- (DV) 432" x 1032" STUDS
- (DV) 432" x 1038" STUDS
- (DV) 432" x 1044" STUDS
- (DV) 432" x 1050" STUDS
- (DV) 432" x 1056" STUDS
- (DV) 432" x 1062" STUDS
- (DV) 432" x 1068" STUDS
- (DV) 432" x 1074" STUDS
- (DV) 432" x 1080" STUDS
- (DV) 432" x 1086" STUDS
- (DV) 432" x 1092" STUDS
- (DV) 432" x 1098" STUDS
- (DV) 432" x 1104" STUDS
- (DV) 432" x 1110" STUDS
- (DV) 432" x 1116" STUDS
- (DV) 432" x 1122" STUDS
- (DV) 432" x 1128" STUDS
- (DV) 432" x 1134" STUDS
- (DV) 432" x 1140" STUDS
- (DV) 432" x 1146" STUDS
- (DV) 432" x 1152" STUDS
- (DV) 432" x 1158" STUDS
- (DV) 432" x 1164" STUDS
- (DV) 432" x 1170" STUDS
- (DV) 432" x 1176" STUDS
- (DV) 432" x 1182" STUDS
- (DV) 432" x 1188" STUDS
- (DV) 432" x 1194" STUDS
- (DV) 432" x 1200" STUDS

**PENNY**  
1000 BROADWAY, SUITE 2000  
NEW YORK, NY 10018  
TEL: 212 691 0000  
WWW.PENNY.COM

DATE: 10/15/2014  
PROJECT: RETAIL F5  
DRAWING: ELEVATIONS  
SCALE: 1/4" = 1'-0"

**Retail F8, Similar to F3, F4, F6, F7, F9, F10, F11, & F12**

