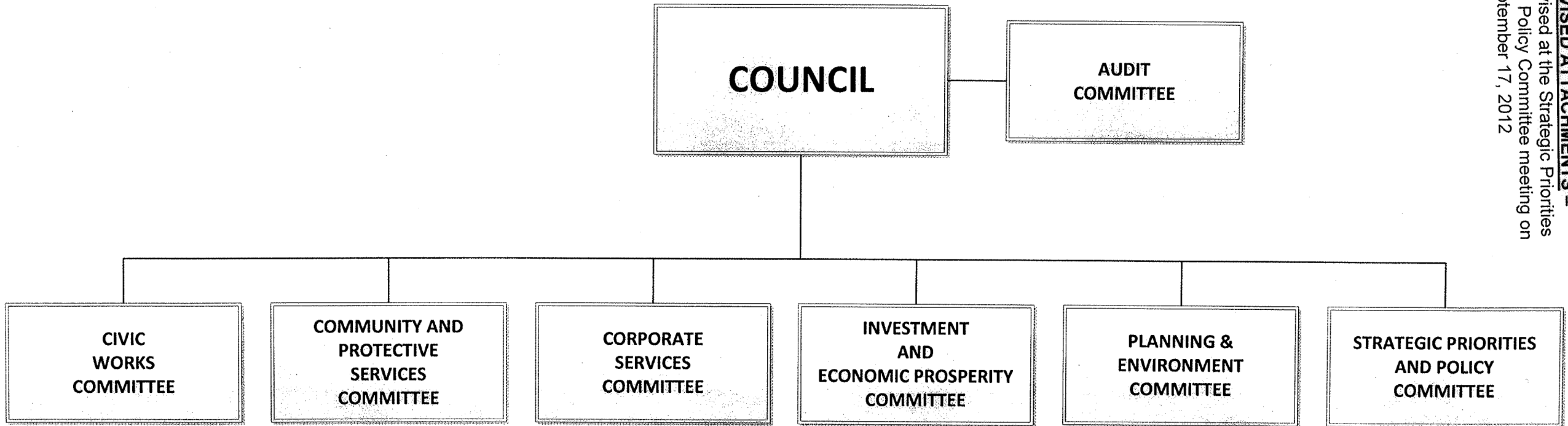


# PROPOSED GOVERNANCE MODEL

(AS REVISED SEPTEMBER 17, 2012)



**REVISED ATTACHMENTS –**  
Revised at the Strategic Priorities  
and Policy Committee meeting on  
September 17, 2012

**Schedule "A" – Mandate – Committee of The Whole**

The Committee of the Whole may consider any matters falling within the purview of Council and in addition shall consider and report to the Council on the following:

Confidential reports from Standing Committees when held as part of the proceedings at a Council meeting.

Any other matters referred to it by the Council.

**Schedule "B" – Mandate – Civic Works Committee**

The City Clerk shall direct the following general matters to the Civic Works Committee for consideration and report to the Council:

- Bicycle Master Plan
- Bridges and Overpasses
- Drainage and Flood Control
- Equipment acquisition and maintenance
- Parking – Assets and Maintenance
- Public Transit (Conventional & Specialized)
  - ❖ London Transit Commission
  - ❖ Alternate Modes (Rapid Transit, etc.)
- Roadways - Planning, Design and Maintenance
- Sewers
- Sidewalks – Planning, Design and Maintenance
- Snow Control
- Specialized Rail Services
- Street Lighting
- Tenders for infrastructure services projects approved as part of the annual budget
- Traffic Control
- Transportation Master Plan and Policies
- Utilities (Hydro, Gas, Telecommunications – Operational)
- Waste Management
  - ❖ Recycling and Composting
  - ❖ Garbage Collection and Disposal
- Wastewater
- Water Supply

Any other matters the City Clerk identifies as relevant to the jurisdiction of the Committee.

**Schedule "C" – Mandate – Community and Protective Services Committee**

The City Clerk shall direct the following general matters to the Community and Protective Services Committee for consideration and report to the Council:

**Animal Services****Emergency Services**

- Emergency Management
- Emergency Medical Services (EMS)
- Fire Services
- Police Services

**Community Services**

- Childcare and Early Learning
- Dearness Services (unless otherwise within the jurisdiction of the Dearness Home Committee of Management)
- Housing and Homelessness
  - ❖ Homeless Support and Emergency Shelters

- ❖ Social Housing
- ❖ Affordable Housing
- Local School Board Liaison
- Middlesex London Health Unit
- Ontario Works
- Parks, Recreation and Neighbourhood Services
  - ❖ Aquatics
  - ❖ Arenas
  - ❖ Community Centres
  - ❖ Community Development/Strengthening Neighbourhoods
  - ❖ Community Gardens
  - ❖ Community Recreational and Leisure Programming
  - ❖ Golf
  - ❖ Parks and Recreation Master Plan
  - ❖ Parks Planning - Design and Development
  - ❖ Parks Planning – Management/Maintenance
  - ❖ Special Events Coordination
  - ❖ Sports Services
  - ❖ Storybook Gardens

Public Safety

- By-laws
- Downtown Surveillance Cameras
- Licensing
- Enforcement (Parking, noise, property standards, etc.)

Any other matters the City Clerk identifies as relevant to the jurisdiction of the Committee.

**Schedule “D” – Mandate – Corporate Services Committee**

The City Clerk shall direct the following general matters to the Corporate Services Committee for consideration and report to the Council:

- AODA (Compliance and Annual Plan)
- Appointments to/resignations from Advisory Committees after the initial appointments at the commencement of a Council term
- Asset Management (Facilities Maintenance and Operations)
- Civic Protocol and Recognitions
- Corporate Communications
- Corporate Information and Archive Management
- Corporate Management
- Corporate Security & Downtown Surveillance Cameras
- Council Support Services
- Customer Service (Corporate Plans and Policies)
- Finance
  - ❖ Annual Development Charges Reporting
  - ❖ Assessment
  - ❖ Banking
  - ❖ Community Grants
  - ❖ Debenture Issuance
  - ❖ Financial Monitoring and Performance
  - ❖ Reserve Funds – Establishment and Reporting
  - ❖ Taxation
- Human Resources
  - ❖ Benefits and Compensation
  - ❖ Corporate Training
  - ❖ Employment Policies
  - ❖ Health and Safety
  - ❖ Labour Relations
  - ❖ Recruitment
- Human Rights
- Information Technology
- Intergovernmental and Community Liaison
- Legal Services (except reporting matters directly related to the jurisdiction of another standing committee)

- Legislative Services
- Municipal Elections
- Payroll
- Purchasing (excluding tender/contract awards for matters falling within the jurisdiction of another standing committee)
- Realty Services
- Risk Management

Any other matters the City Clerk identifies as relevant to the jurisdiction of the Committee.

#### **Schedule “E” – Mandate – Investment and Economic Prosperity Committee**

The City Clerk shall direct the following general matters to the Investment and Economic Prosperity Committee for consideration and report to the Council:

- Culture (Plan, Advisory and Funding)
  - ❖ Art Gallery and Museum (Museum London)
  - ❖ Arts, Culture and Heritage Advisory and Funding
  - ❖ Library Services
  - ❖ London Arts Council
- Economic Strategies, Initiatives and Emerging Issues
  - ❖ Business Retention and Development
  - ❖ Governmental Liaison Related to Economic Development Matters
  - ❖ Industrial Land Strategy
  - ❖ Investment Strategy
  - ❖ Labour Force Retention and Development
  - ❖ London Convention Centre Corporation (Conventions, Meetings and Events)
  - ❖ London Economic Development Corporation
  - ❖ Southwest Economic Alliance (SWEA)
  - ❖ Tourism London (Tourism and Sports Attraction)
- Major Public Facilities
  - ❖ Budweiser Gardens (formerly John Labatt Centre)
  - ❖ Covent Garden Market
  - ❖ Centennial Hall
  - ❖ Eldon House
  - ❖ Grand Theatre
  - ❖ Western Fair

Any other matters the City Clerk identifies as relevant to the jurisdiction of the Committee.

#### **Schedule “F” – Mandate – Planning & Environment Committee**

The City Clerk shall direct the following general matters to the Planning & Development Services Committee for consideration and report to the Council:

- Area Plans
- Building Approvals
- Business Improvement Areas (BIA)
- Community Planning and Community Improvement Plans
- Condominium Approvals
- Conservation Authorities
- Development Approvals
- Environmental Assessments (related to development)
- Five-Year Official Plan Review
- Growth Management
- Heritage – Built
- Land Use Planning
- Natural Heritage (Environmentally Significant Areas)
- Official Plan
- Planning Approvals
- Secondary Area Plans
- Site Plans
- Subdivision Approvals
- Urban Design

- Urban Forestry
- Zoning

Any other matters related to the *Planning Act*, *Ontario Heritage Act* and *Municipal Act*, 2001 and other legislation applicable to planning and development and/or other matters the City Clerk identifies as relevant to the jurisdiction of the Committee.

### **Schedule “G” – Mandate – Strategic Priorities and Policy Committee**

#### Strategic Initiatives:

- Asset Management Plan (Policies and Procedures)
- Corporations with Share Capital (London Hydro and London-Middlesex Housing Corporation)
  - ❖ Annual General Meetings
  - ❖ Board of Directors Compensation
  - ❖ Dividends
  - ❖ Shareholder Resolutions
- Council’s Strategic Plan
- Development Charges (Policy and By-law)
- Governance
  - ❖ Appointment/Resignation of Members of Standing Committees, Special Committees, Boards, Commissions and Outside Agencies
  - ❖ Boundary Adjustments (annexations and amalgamations)
  - ❖ Citizen Appointments to Advisory Committees (at the commencement of a new Council term)
  - ❖ Council Conduct
  - ❖ Governance Model
- Major Corporate Initiatives (e.g. Citizen Engagement, Service London, etc.)

#### Budget:

- Annual Operating and Capital Budgets
- Long-Term Financial Plans and Policies

Any other matters the City Clerk identifies as relevant to the jurisdiction of the Committee.

**COMMITTEE REPORTING RELATIONSHIPS****(as revised at September 17, 2012 SPPC)**

Committees	Proposed Reporting Relationship
Accessibility Advisory Committee	Community and Protective Services Committee
Advisory Committee on the Environment	Civic Works Committee
Agricultural Advisory Committee	Planning and Environment Committee
Animal Welfare Advisory Committee	Community and Protective Services Committee
Audit	Council
Childcare Advisory Committee	Community and Protective Services Committee
Community Safety & Crime Prevention Advisory Committee	Community and Protective Services Committee
Council Housing Leadership Committee	Community and Protective Services Committee
County/City Liaison Committee	Corporate Services Committee
Creative City Committee	Community and Protective Services Committee
Dearness Committee of Management (Information Reports)	Community and Protective Services Committee
Downtown Parking Working Group	Civic Works Committee
Environmental and Ecological Planning Advisory Committee	Planning and Environment Committee
London Advisory Committee on Heritage	Planning and Environment Committee
London Diversity & Race Relations Advisory Committee	Community and Protective Services Committee
London Housing Advisory Committee	Community and Protective Services Committee
LTC Working Group	Civic Works Committee
Town and Gown	Community and Protective Services Committee
Transportation Advisory Committee	Civic Works Committee
Trees and Forests Advisory Committee	Planning and Environment Committee

DECEMBER 2012						
SUNDAY	MONDAY	TUESDAY	WEDNESDAY	THURSDAY	FRIDAY	SATURDAY
						1
2	3 CWC 4PM  CPSC 7PM	4 SPPC 4PM (Council Dec 11/12) Tabling of Tax-Supported Draft Budget	5	6	7	8
9	10	11 COUNCIL 4PM (W/WWT Budget Approval)	12	13	14	15
16	17 CWC 4PM  CPSC 7PM	18 IEPC 4PM (Council Jan 15/13)	19	20	21	22
23	24 CITY HALL CLOSED PM	25 CITY HALL CLOSED	26 CITY HALL CLOSED	27 CITY HALL CLOSED	28 CITY HALL CLOSED	29
30	31 CITY HALL CLOSED					

**JANUARY 2013**

SUNDAY	MONDAY	TUESDAY	WEDNESDAY	THURSDAY	FRIDAY	SATURDAY
		<b>1</b> CITY HALL CLOSED	<b>2</b>	<b>3</b>	<b>4</b>	<b>5</b>
<b>6</b>	<b>7</b>	<b>8</b> CSC 1PM  PEC 4PM	<b>9</b> SPPC - Service Area Budget Presentations – 4PM	<b>10</b>	<b>11</b>	<b>12</b> Budget – Shopping Malls
<b>13</b>	<b>14</b> SPPC – Budget PPM #1 4 PM	<b>15</b> COUNCIL 4PM	<b>16</b>	<b>17</b>	<b>18</b>	<b>19</b>
<b>20</b>	<b>21</b> CWC 4PM  CPSC 7PM	<b>22</b> CSC 1PM  PEC 4PM	<b>23</b>	<b>24</b> SPPC Operating Budget 9AM	<b>25</b> SPPC Operating Budget (if needed) 9AM	<b>26</b>
<b>27</b>	<b>28</b> IEPC 4PM (Council Feb 12/13)	<b>29</b> COUNCIL 4PM	<b>30</b>	<b>31</b>		



**FEBRUARY 2013**

SUNDAY	MONDAY	TUESDAY	WEDNESDAY	THURSDAY	FRIDAY	SATURDAY
					<b>1</b>	<b>2</b>
<b>3</b>	<b>4</b> CWC 4PM  CPSC 7PM	<b>5</b> CSC 1PM  PEC 4PM	<b>6</b>	<b>7</b> SPPC – Capital Budget 9AM	<b>8</b>	<b>9</b>
<b>10</b>	<b>11</b>	<b>12</b> COUNCIL 4PM	<b>13</b> SPPC – Budget PPM #2 4PM	<b>14</b>	<b>15</b>	<b>16</b>
<b>17</b>	<b>18</b> CITY HALL CLOSED	<b>19</b> IEPC 4PM (Council Mar 5/13)	<b>20</b>	<b>21</b>	<b>22</b>	<b>23</b>
<b>24</b>	<b>25</b> CWC 4PM  CPSC 7PM	<b>26</b> CSC 1PM  PEC 4PM	<b>27</b>	<b>28</b> Council – Tax Supported Budget 4PM		

**MARCH 2013**

SUNDAY	MONDAY	TUESDAY	WEDNESDAY	THURSDAY	FRIDAY	SATURDAY
					<b>1</b>	<b>2</b>
<b>3</b>	<b>4</b> SPPC 4PM (Council Mar 26/13)	<b>5</b> COUNCIL 4PM	<b>6</b>	<b>7</b>	<b>8</b>	<b>9</b>
<b>10</b>	<b>11</b>	<b>12</b>	<b>13</b>	<b>14</b>	<b>15</b>	<b>16</b>
<b>MARCH BREAK WEEK</b>						
<b>17</b>	<b>18</b> CWC 4PM  CPSC 7PM	<b>19</b> CSC 1PM  PEC 4PM	<b>20</b>	<b>21</b>	<b>22</b>	<b>23</b>
<b>24</b>	<b>25</b> IEPC 4PM (Council Apr 16/13)	<b>26</b> COUNCIL 4PM	<b>27</b>	<b>28</b>	<b>29</b> GOOD FRIDAY	<b>30</b>
<b>31</b>						

**APRIL 2013**

SUNDAY	MONDAY	TUESDAY	WEDNESDAY	THURSDAY	FRIDAY	SATURDAY
	<b>1</b> EASTER MONDAY	<b>2</b>	<b>3</b>	<b>4</b>	<b>5</b>	<b>6</b>
<b>7</b>	<b>8</b> CWC 4PM  CPSC 7PM	<b>9</b> CSC 1PM  PEC 4PM	<b>10</b>	<b>11</b>	<b>12</b>	<b>13</b>
<b>14</b>	<b>15</b> SPPC 4PM (Council Apr 30/13)	<b>16</b> COUNCIL 4PM	<b>17</b>	<b>18</b>	<b>19</b>	<b>20</b>
<b>21</b>	<b>22</b> CWC 4PM  CPSC 7PM	<b>23</b> CSC 1PM  PEC 4PM	<b>24</b>	<b>25</b>	<b>26</b>	<b>27</b>
<b>28</b>	<b>29</b> IEPC 4PM (Council May 14/13)	<b>30</b> COUNCIL 4PM				

**MAY 2013**

SUNDAY	MONDAY	TUESDAY	WEDNESDAY	THURSDAY	FRIDAY	SATURDAY
			<b>1</b>	<b>2</b>	<b>3</b>	<b>4</b>
<b>5</b>	<b>6</b> CWC 4PM  CPSC 7PM	<b>7</b> CSC 1PM  PEC 4PM	<b>8</b>	<b>9</b>	<b>10</b>	<b>11</b>
<b>12</b>	<b>13</b> SPPC 4PM (Council May 14/13)	<b>14</b> COUNCIL 4PM	<b>15</b>	<b>16</b>	<b>17</b>	<b>18</b>
<b>19</b>	<b>20</b> VICTORIA DAY	<b>21</b> IEPC 4PM (Council Jun 11/13)	<b>22</b>	<b>23</b>	<b>24</b>	<b>25</b>
<b>26</b>	<b>27</b> CWC 4PM  CPSC 7PM	<b>28</b> CSC 1PM  PEC 4PM	<b>29</b>	<b>30</b>	<b>31</b> AMO ANNUAL CONFERENCE	

**JUNE 2013**

SUNDAY	MONDAY	TUESDAY	WEDNESDAY	THURSDAY	FRIDAY	SATURDAY
						<b>1</b> <b>AMO</b> <b>ANNUAL</b> <b>CONFERENCE</b>
<b>2</b> <b>AMO</b> <b>ANNUAL</b> <b>CONFERENCE</b>	<b>3</b> <b>AMO</b> <b>ANNUAL</b> <b>CONFERENCE</b>	<b>4</b>	<b>5</b>	<b>6</b>	<b>7</b>	<b>8</b>
<b>9</b>	<b>10</b> <b>SPPC 4PM</b> <b>(Council Jun 25/13)</b>	<b>11</b> <b>COUNCIL 4PM</b>	<b>12</b>	<b>13</b>	<b>14</b>	<b>15</b>
<b>16</b>	<b>17</b> <b>CWC 4PM</b>  <b>CPSC 7PM</b>	<b>18</b> <b>CSC 1PM</b>  <b>PEC 4PM</b>	<b>19</b>	<b>20</b> <b>PEC 4PM</b>	<b>21</b>	<b>22</b>
<b>23</b>	<b>24</b> <b>IEPC 4PM</b> <b>(Council Jun 25/13)</b>	<b>25</b> <b>COUNCIL 4PM</b>	<b>26</b>	<b>27</b>	<b>28</b>	<b>29</b>
<b>30</b>						

**JULY 2013**

SUNDAY	MONDAY	TUESDAY	WEDNESDAY	THURSDAY	FRIDAY	SATURDAY
	<b>1</b> CITY HALL CLOSED	<b>2</b>	<b>3</b>	<b>4</b>	<b>5</b>	<b>6</b>
<b>7</b>	<b>8</b>	<b>9</b>	<b>10</b>	<b>11</b>	<b>12</b>	<b>13</b>
<b>14</b>	<b>15</b>	<b>16</b>	<b>17</b>	<b>18</b>	<b>19</b>	<b>20</b>
<b>21</b>	<b>22</b> CWC 4PM  CPSC 7PM	<b>23</b> CSC 1PM  PEC 4PM	<b>24</b>	<b>25</b>	<b>26</b>	<b>27</b>
<b>28</b>	<b>29</b> IEPC 1PM (Council Jul 30/13) SPPC 4PM (Council Jul 30/13)	<b>30</b> COUNCIL 4PM	<b>31</b>			

**AUGUST 2013**

SUNDAY	MONDAY	TUESDAY	WEDNESDAY	THURSDAY	FRIDAY	SATURDAY
				<b>1</b>	<b>2</b>	<b>3</b>
<b>4</b>	<b>5</b>	<b>6</b>	<b>7</b>	<b>8</b>	<b>9</b>	<b>10</b>
<b>11</b>	<b>12</b>	<b>13</b>	<b>14</b>	<b>15</b>	<b>16</b>	<b>17</b>
<b>18</b> FCM ANNUAL CONFERENCE (AUG 18-21)	<b>19</b> CWC 4PM  CPSC 7PM	<b>20</b> CSC 1PM  PEC 4PM	<b>21</b>	<b>22</b>	<b>23</b>	<b>24</b>
<b>25</b>	<b>26</b> IEPC 1PM (Council Aug 27/13) SPPC 4PM (Council Aug 27/13)	<b>27</b> COUNCIL 4PM	<b>28</b>	<b>29</b>	<b>30</b>	<b>31</b>

**SEPTEMBER 2013**

SUNDAY	MONDAY	TUESDAY	WEDNESDAY	THURSDAY	FRIDAY	SATURDAY
1	2 CITY HALL CLOSED	3	4	5	6	7
8	9 CWC 4PM  CPSC 7PM	10 CSC 1PM  PEC 4PM	11	12	13	14
15	10 IEPC 4PM (Council Oct 1/13)	11 COUNCIL 4PM	18	19	20	21
22	23 CWC 4PM  CPSC 7PM	24 CSC 1PM  PEC 4PM	25	26	27	28
29	30 SPPC 4PM (Council Oct 22/13)					



**OCTOBER 2013**

SUNDAY	MONDAY	TUESDAY	WEDNESDAY	THURSDAY	FRIDAY	SATURDAY
		<b>1</b> COUNCIL 4PM	<b>2</b>	<b>3</b>	<b>4</b>	<b>5</b>
<b>6</b>	<b>7</b> CWC 4PM  CPSC 7PM	<b>8</b> CSC 1PM  PEC 4PM	<b>9</b>	<b>10</b>	<b>11</b>	<b>12</b>
<b>13</b>	<b>14</b> CITY HALL CLOSED	<b>15</b> IEPC 4PM (Council Oct 22/13)	<b>16</b>	<b>17</b>	<b>18</b>	<b>19</b>
<b>20</b>	<b>21</b> SPPC 4PM (Council Nov 5/13)	<b>22</b> COUNCIL 4PM	<b>23</b>	<b>24</b>	<b>25</b>	<b>26</b>
<b>27</b>	<b>28</b> CWC 4PM  CPSC 7PM	<b>29</b> CSC 1PM  PEC 4PM	<b>30</b>	<b>31</b>		

**NOVEMBER 2013**

SUNDAY	MONDAY	TUESDAY	WEDNESDAY	THURSDAY	FRIDAY	SATURDAY
					<b>1</b>	<b>2</b>
<b>3</b>	<b>4</b> IEPC 4PM (Council Nov 19/13)	<b>5</b> COUNCIL 4PM	<b>6</b>	<b>7</b>	<b>8</b>	<b>9</b>
<b>10</b>	<b>11</b> CWC 4PM  CPSC 7PM	<b>12</b> CSC 1PM  PEC 4PM	<b>13</b>	<b>14</b>	<b>15</b>	<b>16</b>
<b>17</b>	<b>18</b> SPPC 4PM (Council Dec 3/13)	<b>19</b> COUNCIL 4PM	<b>20</b>	<b>21</b>	<b>22</b>	<b>23</b>
<b>24</b>	<b>25</b> CWC 4PM  CPSC 7PM	<b>26</b> CSC 1PM  PEC 4PM	<b>27</b>	<b>28</b>	<b>29</b>	<b>30</b>

**DECEMBER 2013**

SUNDAY	MONDAY	TUESDAY	WEDNESDAY	THURSDAY	FRIDAY	SATURDAY
<b>1</b>	<b>2</b> IEPC 4PM (Council Dec 17/13)	<b>3</b> COUNCIL 4PM	<b>4</b>	<b>5</b>	<b>6</b>	<b>7</b>
<b>8</b>	<b>9</b> CWC 4PM  CPSC 7PM	<b>10</b> CSC 1PM  PEC 4PM	<b>11</b>	<b>12</b>	<b>13</b>	<b>14</b>
<b>15</b>	<b>16</b> SPPC 4PM (Council Dec 17/13)	<b>17</b> COUNCIL 4PM	<b>18</b>	<b>19</b>	<b>20</b>	<b>21</b>
<b>22</b>	<b>23</b>	<b>24</b> CITY HALL CLOSED PM	<b>25</b> CITY HALL CLOSED	<b>26</b> CITY HALL CLOSED	<b>27</b> CITY HALL CLOSED	<b>28</b>
<b>29</b>	<b>30</b> CITY HALL CLOSED	<b>31</b> CITY HALL CLOSED				

# Annual Process for Service Review

