

Springbank Park East Staircase

Meeting with the ACCAC Sub-committee on the Built Environment – September 17, 2018

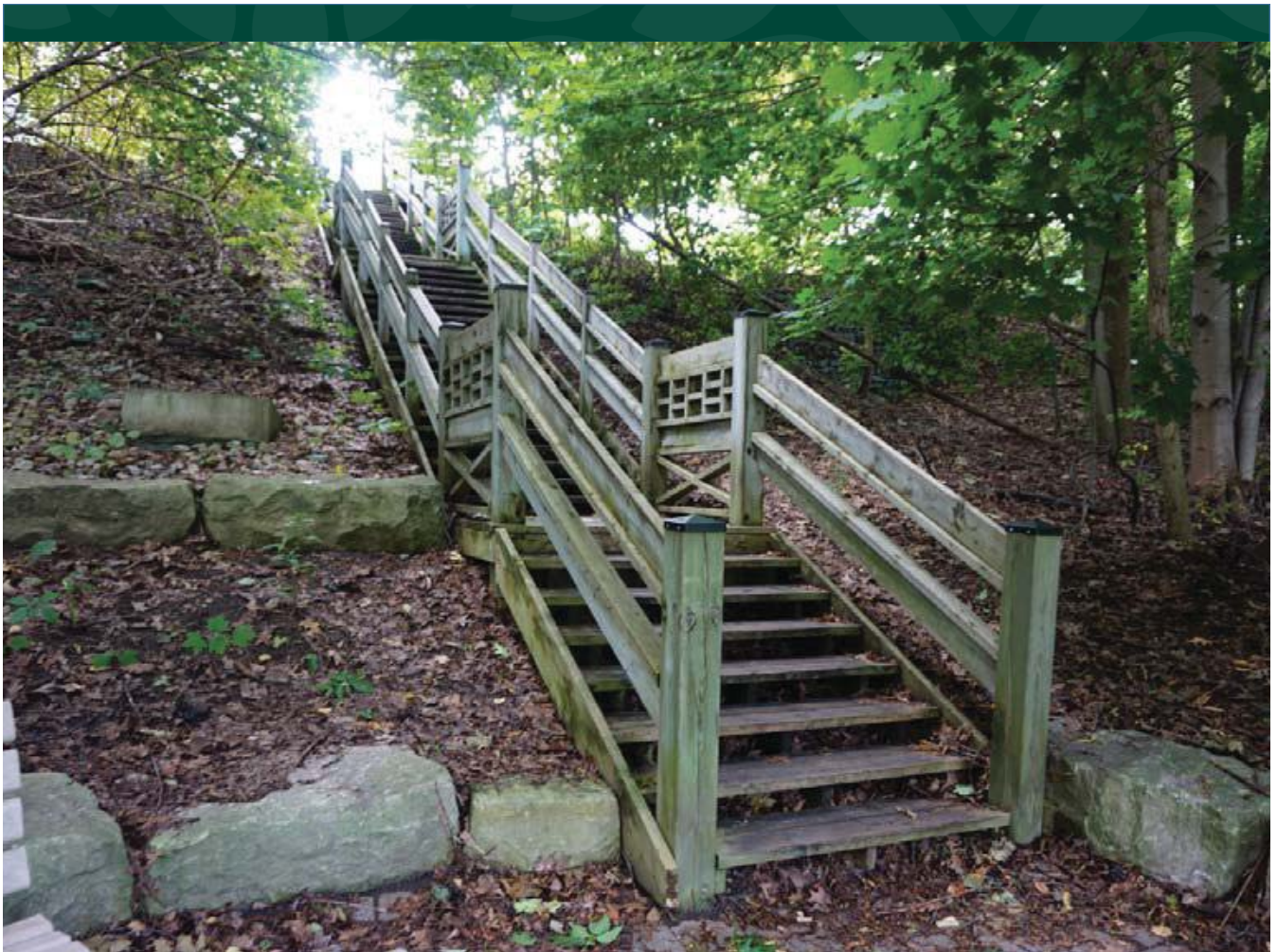
london.ca



Location map

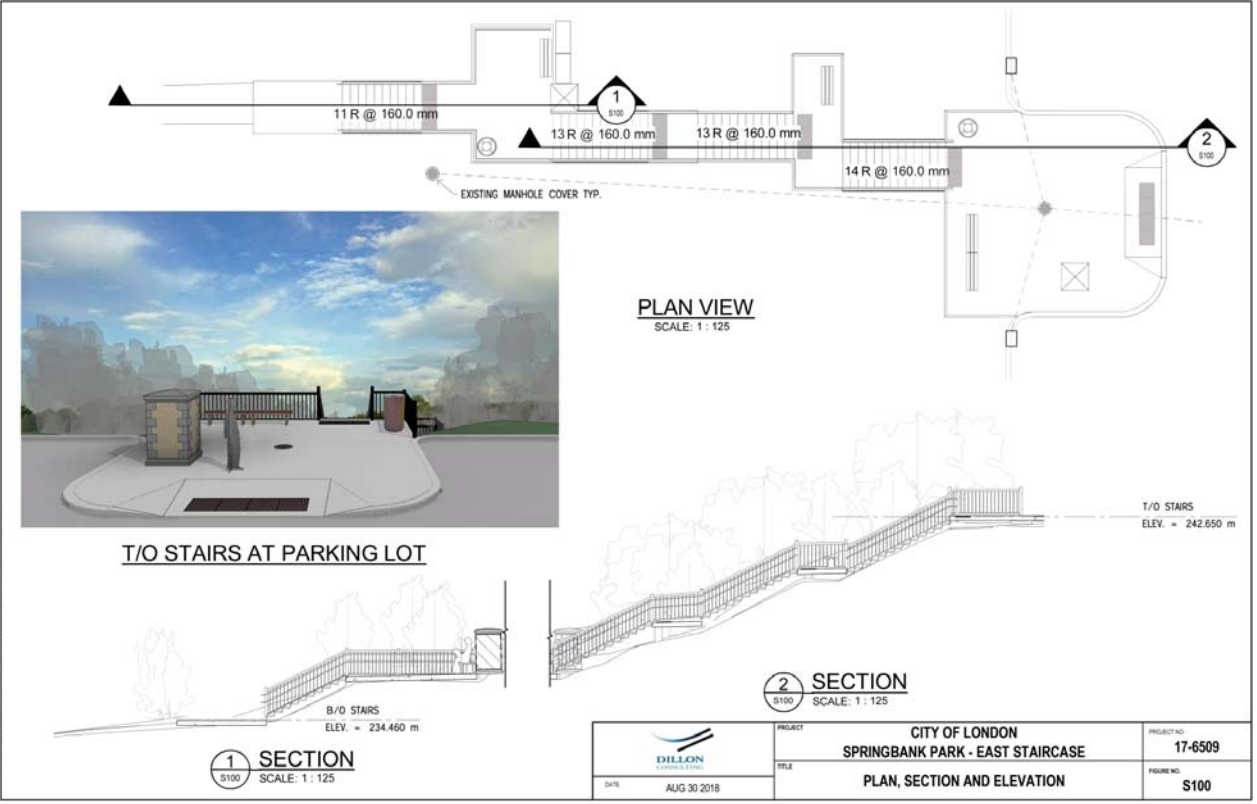


london.ca





DILLON CONSULTING LIMITED, 130 DUFFERIN AVENUE, SUITE 1400, LONDON, ONTARIO, N6A 5R2, PHONE (519) 438-4182, FAX (519) 872-8289
 FILE NAME: P:\0509\97973\176509 - Springbank Stairs_Arch.rvt



	PROJECT	CITY OF LONDON SPRINGBANK PARK - EAST STAIRCASE	PROJECT NO.	17-6509
	DATE	AUG 30 2018	TITLE	PLAN, SECTION AND ELEVATION
			FIGURE NO.	S100

DILLON CONSULTING LIMITED, 130 DUFFERIN AVENUE, SUITE 1400, LONDON, ONTARIO, M6A 5R2, PHONE (519) 438-4192, FAX (519) 672-8208
FILE NAME: C:\Users\TOM\SR\Documents\000 - Working\17-6509 - Springbank Stairs\17-6509 - Springbank Stairs_ARCH.rvt



TOP OF STAIRS



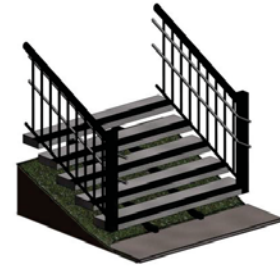
STANDARD STEEL PAN STAIRS
WITH BROWN STAIR STRUCTURE FINISH




FLOATING TREAD STAIRS
WITH BLACK STAIR STRUCTURE FINISH



SIDE VIEW



 DILLON CONSULTING LIMITED	PROJECT	CITY OF LONDON SPRINGBANK PARK - EAST STAIRCASE	PROJECT NO.	17-6509
	DATE	AUG 30 2018	TITLE	TREAD OPTION VIEWS
			FIGURE NO.	S101

london.ca



Accessible features

As per AODA

- Slip resistant treads (concrete)
- Uniform rise and run – 2 to 1 ratio
- Contrasting nosing strips
- Handrail / guardrail as per requirements
- Tactile warning plates at landings
- Width of 2.2 m



Accessible features

As per GAATES, best practices

- Second lower handrail – for children or people of smaller stature

Other

- Benches at top, bottom and on landings as rest areas
- Alternate accessible route



Exception – Closed risers

- Impact on the Environment and Cultural Heritage:
 - To allow more light under the stairs allows for ground cover plants to grow and minimize soil erosion
 - Springbank Park is a Cultural Landscape – added amenities must respect the character of the park
- Existing site constraints – a ‘staircase in the forest’:
 - Open risers allows for easier clean-up of leaves and debris
 - Minimize opportunities for hiding spots