

Advisory Committee on the Environment

Report

9th Meeting of the Advisory Committee on the Environment
September 5, 2018
Committee Room #3

Attendance PRESENT: S. Ratz (Chair), M. Bhavra, K. Birchall, S. Hall, M. Hodge, J. Howell, N. St. Amour and D. Szoller and J. Bunn (Secretary)

 ABSENT: M. Bloxam, S. Brooks, L. Langdon, T. Stoiber and A. Tipping

 ALSO PRESENT: V. Kinsley, A. Macpherson, L. McDougall, A. Powell and J. Stanford

The meeting was called to order at 12:16 PM.

1. Call to Order

1.1 Disclosures of Pecuniary Interest

That it BE NOTED that no pecuniary interests were disclosed.

2. Scheduled Items

2.1 Update on Pollinator Habitat Protection, Restoration and Stewardship

That it BE NOTED that the attached presentation and handout, as well as the Memo dated August 22, 2018, as appended to the Agenda, from L. McDougall, Ecologist Planner, with respect to an update on pollinator habitat protection, restoration and stewardship, were received.

2.2 60% Waste Diversion Action Plan

That it BE NOTED that the attached presentation from J. Stanford, Director, Environment, Fleet and Solid Waste, with respect to the 60% Waste Diversion Action Plan, was received.

3. Consent

3.1 8th Report of the Advisory Committee on the Environment

That it BE NOTED that the 8th Report of the Advisory Committee on the Environment, from its meeting held on July 4, 2018, was received.

3.2 7th Report of the Environment and Ecological Planning Advisory Committee

That it BE NOTED that the 7th Report of the Environmental and Ecological Planning Advisory Committee, from its meeting held on June 21, 2018, was received.

4. Sub-Committees and Working Groups

None.

5. Items for Discussion

5.1 Green in the City Update

That it BE NOTED that the Green in the City Speaker Series Overview, dated August 28, 2018, from S. Ratz, was received.

5.2 The River Talks Update

That it BE NOTED that The River Talks event update, dated August 28, 2018, from S. Ratz, was received.

5.3 Forestry Operations Request

That it BE NOTED that the Advisory Committee on the Environment (ACE) held a general discussion related to the information the ACE would like to receive from Forestry Operations with respect to trees in the City of London.

5.4 Practices Related to the Watering of London Trees

That it BE NOTED that the Advisory Committee on the Environment held a general discussion with respect to practices related to the watering of trees in London.

5.5 ACE Presentations / Events / Meeting List

That it BE NOTED that the Advisory Committee on the Environment Presentations/Events/Meeting List, dated August 28, 2018, from S. Ratz, was received.

5.6 Call for Nominations - 2019 New Year's Honours List

That it BE NOTED that the 2019 Mayor's New Year's Honour List Nomination Request letter, dated July 23, 2018, from the City Clerk, was received.

6. Deferred Matters/Additional Business

6.1 (ADDED) Letter of Resignation

That it BE NOTED that the letter of resignation, dated September 3, 2018, from G. Sass, was received.

7. Confidential

7.1 (ADDED) 2019 Mayor's New Year's Honour List Nomination

The Advisory Committee on the Environment convened in closed session from 1:58 PM to 2:02 PM after having passed a motion to do so, with respect to a personal matter pertaining to identifiable individuals, including municipal employees, with respect to the 2019 Mayor's New Year's Honour List.

8. Adjournment

The meeting adjourned at 2:03 PM.



Protecting and Enhancing Pollinator Habitat in London



Photo by Ben Porchuk 2018

Community planting prairie & native woodland species with Carolinian Canada, Friends of the Coves, City of London, 2017 at Elmwood Gateway/Coves ESA. Spicebush Swallowtail butterfly nectaring on Dense Blazing Star, 2018 at Elmwood Gateway/Coves ESA.

Advisory Committee on the Environment - September 5, 2018

Environmental & Parks Planning, Planning Services



Protecting and Enhancing Pollinator Habitat in London



Milkweed with monarch caterpillar on residential front yard in Old East Village in London, 2018
London City By-laws permit naturalizations, perennial gardens and wildflower gardens on private property including planting of pollinator species such as milkweed.

- **ACE's 10 "Plight of the Pollinator" Recommendations from 2014** were addressed
- Staff met with **ACE** in May **2017** to review in detail how ACE's 10 Recommendations were addressed
- **ACE** provided 3 new "Plight of the Pollinator" Recommendations in May **2018** – **Memo from City Staff is included on ACE's September agenda providing detailed responses and updates.**
- **ACE Council Resolution May 23, 2018:**i) the Civic Administration BE REQUESTED to research and report back to the Advisory Committee on the Environment (ACE) with respect to the City of London being certified with Bee City Canada; it being noted that ACE supports the initiatives of Bee City Canada; and,
- ii) the Managing Director, Planning and City Planner, BE REQUESTED to present at a future meeting of the ACE with respect to an update on pollination work being done by the City of London;



Protecting and Enhancing Pollinator Habitat in London



ACE Recommended that London be certified by Bee City Canada. “In this way we can be recognized as a leader within Canada in the creation of bee-friendly cities.”



Agree that the City of London is already a leader in habitat and pollinator protection, demonstrating a proactive approach throughout the City



Ecological restoration of meadow habitat in Westminster Ponds & Coves ESAs



Protecting and Enhancing Pollinator Habitat in London

**Pottersburg Valley ESA
Enhancement of Oak Savannah and Creation of Prairie Habitat**



Goal is to increase native vegetation diversity through a long term Oak Savannah and Prairie habitat management plan.



Protecting and Enhancing Pollinator Habitat in London

Kilally Meadows ESA – Ecological Restoration Plan for 146 hectares of forest, wetlands and meadow habitats on both sides of Thames River



Adopt an ESA group asked for a long term, prioritized restoration plan, with opportunities for volunteers and restoration specialists to continue and enhance the extensive restoration work to date in the ESA.



Protecting and Enhancing Pollinator Habitat in London

Westminster Ponds ESA – Ecological Restoration of area with 80% non-native invasive buckthorn and dead ash trees



Before picture 2016 – Buckthorn / Dead Ash Monoculture

2018 – Ecological Restoration underway & habitat is improving

Canada 150 Grant from Federal Government helped fund restoration. Began in 2017 with wintertime mulching of the buckthorn and many standing dead ash trees. Project successfully restoring area back to healthy savannah, wetland & forest habitats, supporting a diversity of native species.



Protecting and Enhancing Pollinator Habitat in London

Ontario Nature Award

- 🐝 City of London was recognized with the [Lee Symmes Municipal Award by Ontario Nature](#).
- 🐝 The Award recognizes municipalities that demonstrate community leadership and exceptional achievement in planning or implementing programs that protect and regenerate the natural environment within a community.
- 🐝 Ontario Nature commended the City of London for ensuring a natural legacy for future generations.



Sifton Bog Environmentally Significant Area, drone photo of accessible AODA boardwalk 2018



Protecting and Enhancing Pollinator Habitat in London

🐝 About 10% of the City is publically owned parkland, and over 60% of that area or about 1,400 hectares are naturalized, non-mowed areas that provide good pollinator habitat - this area increases every year.

Naturalization

The City of London's Naturalization program allows selected areas to return to a natural state by encouraging the regeneration of native grasses, trees and wildflowers. The area beyond this sign is in the process of naturalizing.

Working to make your life a little Greener.

For more information call 519-661-4980




City restoration projects & signs improve awareness and protection of pollinator habitats.



Protecting and Enhancing Pollinator Habitat in London

Staff report to Planning and Environment Committee this fall will summarize how London will continue to meet Bee City Canada’s requirements.

Staff report will include a draft “Bee City” Council Resolution for Council’s consideration



Adopt an ESA, Native Seed Collection Workshop, Common Milkweed Seeds

POLLINATOR FRIENDLY GARDENS



Make your garden and London a safe haven for pollinators

ACE Pollinator Brochure on City Website



London will continue to lead in:

- ✓ Creating, maintaining and improving pollinator habitat.
- ✓ Educating about the importance of pollinators.
- ✓ Celebrating pollinators



Protecting and Enhancing Pollinator Habitat in London

ACE Recommendation 2: *Identify potential sites (on public land) across the city where pollinator habitat (garden, meadow) may be planted either by city staff or community groups. These sites may comprise parks or right-of-way areas next to roads and railways.*

Staff Response - Ongoing: London Plan policy 1378 “Potential naturalization areas...these areas may include lands suitable to create natural habitats such as wetland habitat, pollinator habitat...Locations are...identified as potential naturalization areas on [Map 5](#).”

LEGEND

NATURAL HERITAGE SYSTEM

- Provincially Significant Wetlands
- Wetlands
- Unevaluated Wetlands
- Significant Woodlands
- Woodlands
- Significant Valleylands
- Valleylands

- Areas of Natural and Scientific Interest
- Environmentally Significant Areas (ESA)
- Potential ESAs
- Upland Corridors
- Potential Naturalization Areas
- Unevaluated Vegetation Patches



Protecting and Enhancing Pollinator Habitat in London

In addition to areas on Map 5, many naturalization projects are coordinated every year by City staff and other groups to include opportunities for the Community, “Adopt a ...” Groups, and others to enhance pollinator habitat across the City.




Coves ESA Before and After

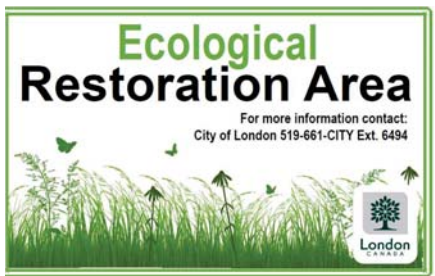


Protecting and Enhancing Pollinator Habitat in London

Many City programs empower community groups to plant pollinator habitats on a City property, private property, and right of ways:

 [NeighbourGood London](#) programs: [TreeMe](#) and [Neighbourhood Decision Making](#) funded over half a million dollars in pollinator habitat projects since 2015.

 The [Adopt a Park](#), [Adopt a Street](#) [Adopt a Pond Program](#) and Adopt an ESA programs offer more opportunities.





Protecting and Enhancing Pollinator Habitat in London

Many City programs empower community groups to plant pollinator habitats on City property, private property and right of ways:

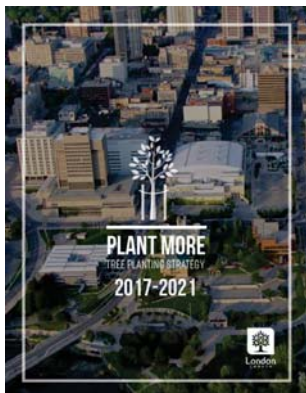
-  [Urban Agriculture Strategy](#)
-  [London Community Gardens - 17 Community Gardens](#)
-  [London Invasive Plant Management Strategy](#)
-  [The Growing Naturally Program](#)
-  [Active & Green Communities](#)
-  [Friends of the London Civic Garden Complex](#)



Protecting and Enhancing Pollinator Habitat in London

ACE Recommendation 3: Set aside funds in the next 4 year budget cycle to support the implementation of the pollinator-related policies identified in the London Plan.

Staff Response: Done. All City policies and programs in today's presentation will be funded through the next 4 year budget cycle, and 10 year budget forecast (subject to Council's approval) to support all London Plan pollinator policies.





Protecting and Enhancing Pollinator Habitat in London

Did you know?

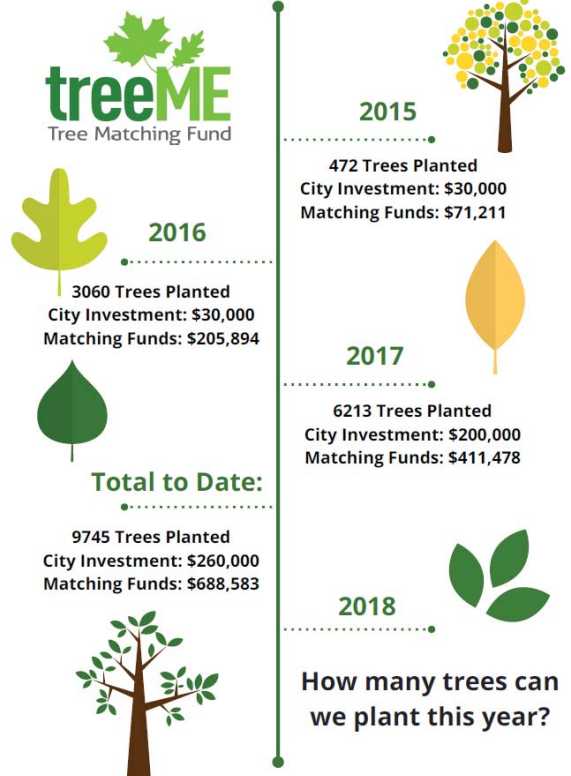
- 🐝 Trees are critical for pollinators and support a greater diversity of butterflies and moths than most herbaceous plants.
- 🐝 Trees provide most of the first available food for pollinators in the spring.
- 🐝 London's urban forest is a key element in provision of habitat and food for pollinators, and, is closely tied to achieving the London Plan pollinator policies.
- 🐝 The Council approved Tree Planting Strategy is on track and fully funded (\$450,000/year) to plant 20,000 trees from 2016 to 2019.
- 🐝 The strategy outlines the long term plan to increase London's tree canopy cover from 24% to 34%.



Protecting and Enhancing Pollinator Habitat in London

treeME Tree Matching Fund – \$200,000 available in 2018 and 2019

- 🐝 Leverages City funding to get even more trees and good pollinator habitat on private property.
- 🐝 90% of land in City is private property





Protecting and Enhancing Pollinator Habitat in London

Neighborhood Decision Making Program – \$250,000/year available

Winning Projects 2016 & 2017 that support pollinator habitat include:

-  **Plant Fruit Trees near Community Gardens**
-  **Community Garden at First Saint Andrew's United Church**
-  **Cedar Hollow Park Improvements and Plantings**
-  **Natural Landscape Playground in Kiwanis Park**
-  **Save the Bees Pollinator Garden in Byron**
-  **Gleaning Food Forest**

Gleaning Food Forest | \$113,000

Idea Description
Plant a food forest to be gleaned by community groups for the benefit of people in need.

Urban food forestry

Cost and Budget
\$5,000 for trees

Community Impact
A gleaning food forest aligns with London's goal of ending poverty in the next generation. Hopefully this would set off a chain reaction where all of London's neighbourhoods would be planting food forests to increase food security and decrease poverty.

Other Information
Sanctuary London, an agency that works with people experiencing homelessness, has agreed to support the gleaning of the food forest.

Vote on Saturday Nov. 3
Online: www.london.ca/neighbourhood
In your neighbourhood: see map










NeighbourGood LONDON



Protecting and Enhancing Pollinator Habitat in London

Neighborhood Decision Making Program – \$250,000/year available

Winning Projects that support pollinator habitat in 2018 included:

-  **Nature Sanctuary in Hyde Park**
-  **Bat Boxes in Masonville**
-  **Trees for Accessible Playground**
-  **Cedar Hollow PS Outdoor Classroom - Raised Gardens**
-  **Bee Pollinator Garden**
-  **London's Free Fruit Trees**
-  **Pollinator Pathways Project**
-  **Community Beehives**
-  **F.D. Roosevelt Public School Yard Enhancements**

Central

Bee Pollinator Garden

IDEA SUMMARY
Installation of a Bee Pollinator Garden in Old East Village neighbourhood green space.

COST SUMMARY
Total Cost = \$7,000
Cost Breakdown:
Installation of Garden - \$7,000

COMMUNITY IMPACT
The world needs more bees. The park area, the public and all the people that live in the neighbourhood would realize the great value with the garden, the plants, the space and the extra work they do for the environment. The garden will be a visual pleasure adding beauty and will also be used as an educational feature.

Old East Village

NeighbourGood LONDON

NEIGHBOURHOOD DECISION MAKING 2018
VOTE FOR THIS IDEA on Saturday June 16th
Online (all-day) or at your local library (10 am - 4 pm)
For more info & to vote, visit: getinvolved.london.ca/NDM



Protecting and Enhancing Pollinator Habitat in London

Next Steps

- 🐝 **Staff report to Planning and Environment Committee this fall will summarize how London will continue to meet Bee City Canada's requirements.**
- 🐝 **Staff report will include a draft "Bee City" Council Resolution for Council's consideration**



**L. McDougall,
Ecologist
519-661-2489 Ext. 6494
lmcdouga@london.ca
Environmental and
Parks Planning,
Planning Services**

UPDATE

Summer 2018



City of London


A leader in Habitat and Pollinator Protection, Enhancement and Creation initiatives


- ✦ **NeighbourGood London** programs including **TreeMe** and the **Neighbourhood Decision Making** program, empower residents to plant trees, shrubs and pollinator gardens. The City has funded over half a million dollars in pollinator habitat projects since 2015 through these programs.
- ✦ London's urban forest is a key element in provision of habitat and food for pollinators. The **Tree Planting Strategy** is on track and fully funded to plant 20,000 trees from 2016 to 2019 and outlines the long term plan to increase London's tree canopy cover from 24% to 34%.
- ✦ The City's **Adopt-a-Park, Adopt-a-Street, Adopt an ESA** and **Adopt-a-Pond** programs engage communities to plant trees, shrubs and gardens that include milkweed on City property.
- ✦ About 10% of the City (inside the Urban Growth Boundary) is publicly owned parkland, and over 60% of that area or about 1,400 hectares (3,500 acres) is managed as naturalized, non-mowed areas. This area increases every year.
- ✦ **The Urban Agriculture Strategy** is one of the many related plans, policies, and strategies for pollinator protection in London and includes a section on Urban Pollinators.
- ✦ **London Community Gardens** - 17 community gardens on City property with a simple process for residents to start a new one.
- ✦ **Active & Green Communities** program promotes environmental awareness and stewardship on private property through community engagement.
- ✦ The Council approved **London Invasive Plant Management Strategy** improves the ecological integrity of our natural areas and restoration plantings improve the diversity of native species for pollinators.
- ✦ London City By-laws permit naturalizations, perennial gardens and wildflower gardens on private property including planting of pollinator species such as milkweed.




Photo by Wendy Hansuld, Friends of Medway Creek, Adopt an ESA



 City of London was recognized with the [Lee Symmes Municipal Award by Ontario Nature](#). The Award recognizes municipalities that demonstrate community leadership and exceptional achievement in planning or implementing programs that protect and regenerate the natural environment within a community. Ontario Nature commended the City of London for ensuring a natural legacy for future generations.

 Many government agencies, Conservation Authorities and others are leading additional pollinator habitat initiatives in London, primarily on private property. Groups like [Pollinative](#) whose “mission is to restore, replant and preserve natural “Pollinative Pathways” to ensure the survival of bee, insect and bird populations.” has provided over 700 acres of pollinator habitat on private property in London since 2016.



 [The Growing Naturally Program](#) helps residents reduce their environmental footprint and provides resources for a healthier environment for pollinators and our watersheds.



For more information on habitat and pollinator protection initiatives and opportunities, please contact:

[NeighbourGood London](#)

519-661-5336

neighbourgood@london.ca

www.neighbourgoodlondon.ca

Environmental & Parks Planning

Ecologist, Linda McDougall

519-661-2489 ext. 6494

lmcdoug@london.ca



Presentation to the Advisory Committee on the Environment

September 5, 2018

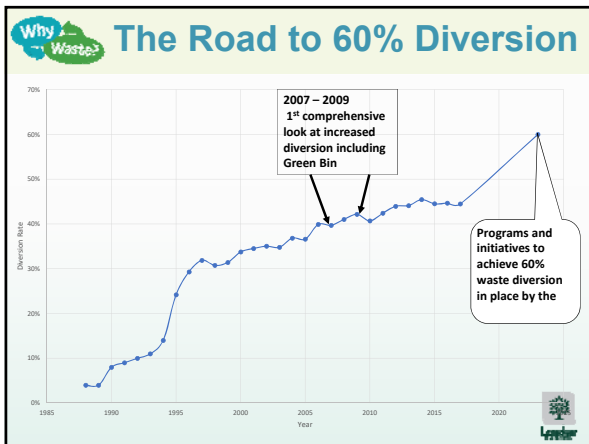
Environmental & Engineering Services

60% Waste Diversion Action Plan

What's in the garbage?

Single Family Homes Apartments

Waste Management Working Group:	July 13, 2018
Civic Works Committee:	July 17, 2018
Municipal Council:	July 24, 2018
Community Engagement:	July 25 – September 27, 2018



Council Direction(s)

October 30, 2017 Council direction:
"The W12A Landfill expansion be sized assuming the residential waste diversion rate is 60% by 2022 noting this does not prevent increasing London's residential waste diversion rate above 60% between 2022 and 2050."

July 13, 2018 Waste Management Working Group:
The action plan to achieve 60% waste diversion by 2022 BE SUPPORTED IN PRINCIPLE; and,

The release of the report for review and comment by the general public and other stakeholders BE SUPPORTED . .

Council Direction(s)

Strategic Plan for the City of London (2015-2019):
Increase efforts on more resource recovery, long-term disposal capacity, and reducing community impacts of waste management.

The London Plan (December 28, 2016):
Direction #4 *Become one of the greenest cities in Canada*
#12 *Minimize waste generation, maximize resource recovery, and responsibly dispose of residual waste.*

Why Waste? Provincial Direction(s)

60% waste diversion goal is a key London commitment as part of the Environmental Assessment for the W12A Landfill expansion

Strategies for a WASTE-FREE ONTARIO Building the CIRCULAR ECONOMY
February 2017

Many Targets ("must")

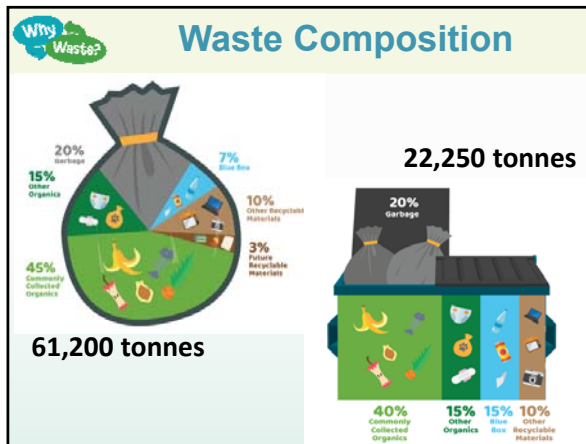
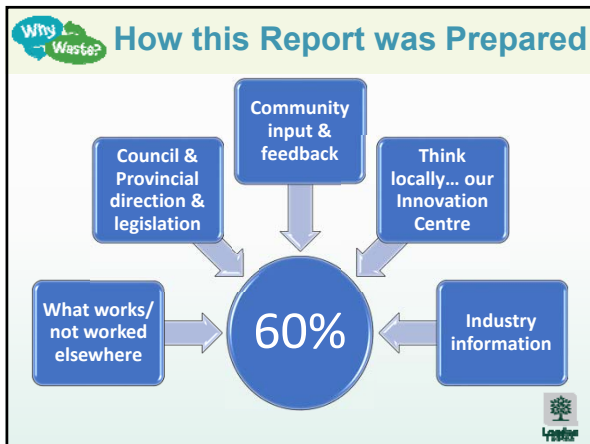
- 70% reduction/recovery of food and organic waste from SF homes by 2025
- 50% reduction/recovery of food and organic waste generated at the building by 2025

To mark our progress and keep on track, we have set three interim goals:

- 30% diversion rate by 2020
- 50% diversion rate by 2030
- 80% diversion rate by 2050

Why Waste? How much waste and resources?

<p>Single Family 129,900 tonnes 50% diverted</p>	<p>Multi-residential 29,400 tonnes 18% diverted</p>
<p>Industrial, Commercial & Institutional ~ 170,000 tonnes ~ 20% diverted</p>	<p>Construction, Renovation & Demolition ~ 120,000 tonnes ~ 50% diverted</p>



Why Waste? **Composition – Did You Know!!**

Top 5 Diversion Opportunities	Estimated tonnes	% of Waste	Kg/hhld/year
1. Avoidable food waste	19,300	23%	107
2. Other organics	12,300	15%	68
3. Unavoidable food waste	10,100	12%	56
4. Pet waste	8,500	10%	47
5. Items for Blue Box/Cart	8,300	10%	46
Total	58,500	70%	324

Why Waste? **Blue Box – Blue Carts**


Why is this important?	<ul style="list-style-type: none"> • Provincial law - shifting to EPR is key • Industry will be funding
How many actions?	<ul style="list-style-type: none"> • None; Industry will be responsible • Council/City staff to continue to push
How much will it divert?	<ul style="list-style-type: none"> • 1% to 3% • 1,600 to 4,800 tonnes
What is the cost/hhld estimate?	<ul style="list-style-type: none"> • SAVINGS estimated at \$1.5 to \$1.8 million by 2022+ • SAVINGS \$8.00 to \$10.00 per year


Why Waste? **New (or Expanded) Recycling**

Why is this important?	<ul style="list-style-type: none"> • Items are easy to identify/describe • Identified in provincial direction
How many actions?	<ul style="list-style-type: none"> • 7; some pilot projects • Support local jobs; potential for more • New business opportunities
How much will it divert?	<ul style="list-style-type: none"> • 0.4% to 0.8% • 640 to 1,280 tonnes
What is the cost/hhld estimate?	<ul style="list-style-type: none"> • Range \$2.00 to \$3.00 per year • Likely \$2.50


Why Waste? **Curbside Organics**

Why is this important?	<ul style="list-style-type: none"> • Largest portion of garbage (up to 60%) • Proven programs (that have improved) • Legislated
How many actions?	<ul style="list-style-type: none"> • 2 • Weekly Green Bin, recycling • Biweekly, same day garbage pickup
How much will it divert?	<ul style="list-style-type: none"> • 8% to 12% • 13,000 to 20,000 tonnes
What is the cost/hhld estimate?	<ul style="list-style-type: none"> • Range \$21.75 to \$30.50 per year • Likely \$28 (curbside home only \$40)

 Multi-res Organics	
Why is this important?	<ul style="list-style-type: none"> • Largest portion of the waste stream • Legislated
How many actions?	<ul style="list-style-type: none"> • 1 • Pilot project (15%) – mixed waste processing and composting/digestion • Follow progress of other communities
How much will it divert?	<ul style="list-style-type: none"> • 0.5% to 0.7% • 800 to 1,120 tonnes
What is the cost/hhld estimate?	<ul style="list-style-type: none"> • Range \$2.25 to \$4.00 per year • Likely \$2.75 (Multi-res unit only \$62.50)

 Other Organics Programs	
Why is this important?	<ul style="list-style-type: none"> • Food waste avoidance should be a priority • Lowers costs; community oriented
How many actions?	<ul style="list-style-type: none"> • 3 • Builds on 2 existing actions, BYC and community composting
How much will it divert?	<ul style="list-style-type: none"> • 0.3% to 0.6% • 480 to 960 tonnes
What is the cost/hhld estimate?	<ul style="list-style-type: none"> • Range \$1.50 to \$2.00 per year • Likely \$1.75


 FOCUS – Food Waste Avoidance	
	<p>Local Research (Western University), local Pilot Projects and experience in Canada, USA and Europe</p> <ul style="list-style-type: none"> • Audits – confirmed up to 2/3rds avoidable food waste • \$450 to \$600 per household (\$80 to \$100 million/year) in avoidable food • 10% reduced = \$8 to 10 million saved locally 

 Reduction & Reuse	
Why is this important?	<ul style="list-style-type: none"> • Lowers costs; community oriented • Council policies, directions and by-laws set stage
How many actions?	<ul style="list-style-type: none"> • 7, includes community investment • People are the driving force behind reduction and reuse
How much will it divert?	<ul style="list-style-type: none"> • 1% to 4% • 1,600 to 6,400 tonnes
What is the cost/hhld estimate?	<ul style="list-style-type: none"> • Range \$0.50 to \$2.00 per year • Likely \$1.50

Why Waste? Ipsos Survey June 2018


Parameters

- 301 respondents; Single family and apartments
- +/- 6.4%, 19 times out of 20



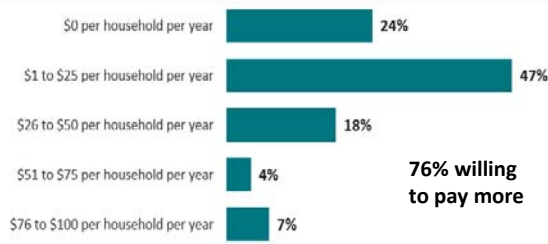
Findings

- waste diversion is somewhat or very important (93%) with 53% stating very important
- support food waste avoidance program (88%)
- support curbside/multi organics program (75%)
- prepared to deliver more to depots (65%)



Why Waste? Ipsos Survey June 2018

Willingness to pay more for increased waste diversion




Amount per household per year	Percentage
\$0 per household per year	24%
\$1 to \$25 per household per year	47%
\$26 to \$50 per household per year	18%
\$51 to \$75 per household per year	4%
\$76 to \$100 per household per year	7%

76% willing to pay more

Why Waste? **Benefits**

Environmental ✓

- increased waste diversion (33% more)
- reduced GHG gas emissions (equivalent of removing 4,200 to 6,800 cars)
- reduced landfill impacts (odour, traffic)
- better use of material and resources




Why Waste? **Benefits**

Social ✓

- creation of jobs (between 125 and 170, direct & indirect)
- satisfaction/pride of community

Financial ✓

- short-term landfill cost savings
- avoid long term waste export costs (\$5 to \$7 million/year)



Why Waste? **Estimated Annual Costs**

Program Category	Cost Range	Likely Cost
Blue Box/Cart Recycling	\$0	\$0
New Recycling Programs and Initiatives	\$350,000 - \$550,000	\$450,000 (\$2.50)
Curbside Organics Management Program	\$3,900,000 - \$5,500,000	\$5,000,000 (\$27.75)
Multi-Res Organics Pilot Program	\$400,000 - \$700,000	\$500,000 (\$2.75)
Other Organic Programs	\$250,000 - \$350,000	\$300,000 (\$1.75)
Waste Reduction, Reuse Initiatives and Policies	\$150,000 - \$350,000	\$250,000 (\$1.50)
Total	\$5,050,000 - \$7,450,000	\$6,500,000 (\$36.00)

Why Waste? **Estimated Capital Costs**

Program Category	Items	Estimated Cost
New Recycling Programs and Initiatives	• EnviroDepot Improvements	\$500,000 to \$2,700,000
Curbside Organics Management Program	• Green Bin Carts • Kitchen Catchers • Collection Vehicles	\$12,000,000
Other Organic Management Programs	• Community composting	\$100,000
Waste Reduction, Reuse Initiatives and Policies	• Reuse facilities	\$200,000
Total		\$12.5 - \$15 million

Why Waste? **Potential Funding Sources**

Source	Potential Amount	Possible Date	Who Controls	Level of Risk
Full EPR for Blue Box	\$1.5 M to \$1.8 M	2022 to 2025	Province	Low
Full EPR for Other Programs	\$50,000 to \$150,000	2023/2025	Province	High
W12A Landfill Levy	\$250,000 to \$1 M	2020/2022	City	Low
Total	\$1,800,000 - \$3,000,000 (\$2,000,000 likely)			


Why Waste? **Annual Cost Summary**

	Low	High	Likely (Anticipated)
Cost	\$5,050,000	\$7,450,000	\$6,500,000
Cost/hhld	\$28.00	\$41.50	\$36.00
Revenue	\$1,800,000	\$2,950,000	\$2,000,000
Revenue/hhld	\$10.00	\$16.50	\$11.00
Total Estimated Cost	Requires financing strategy as funding/revenues come later		\$4,500,000
Total cost/hhld			\$25.00

Why Waste? Multi-year Budget Outlook

3 Year Investment	\$1,300,000	\$3,900,000	\$6,500,000
60% Multi-Year Budget	2020	2021	2022
Blue Box/Blue Cart Recycling	\$0	\$0	\$0
New Recycling Initiatives	\$150,000	\$300,000	\$0
Curbside Green Bin Program	\$200,000	\$2,200,000	\$2,600,000
Multi-Res Organics Pilot	\$500,000	\$0	\$0
Other Organics Programs	\$300,000	\$0	\$0
Reduction & Reuse Initiatives	\$150,000	\$100,000	\$0
Totals	\$1,300,000	\$2,600,000	\$2,600,000


Potential funding will lower these amounts



Why Waste? 2016 Municipal Comparisons

- 49% - Ontario average waste diversion
- 66% Region of York (inc. Markham at 71%)
- 61% County of Simcoe
- 60% County of Dufferin
- 60% City of Kingston
- 50-59% - 16 communities

Source: Resource Productivity & Recovery Authority



Why Waste? MBNC Cost Comparisons

2016 Municipality	Cost per Household		
	Collection & Disposal	Diversion	Total
London (existing)	\$89	\$50	\$139
Hamilton (lowest Diversion & GB)	\$150	\$69	\$218
Niagara (Lowest with GB)	\$90	\$102	\$192
Average of 9 GB municipalities	\$127	\$100	\$227
London (60% - likely cost)	\$87	\$87	\$174
London (60% - high cost)	\$87	\$92	\$179

Why Waste? Next Steps – 60%

Next Steps	Comments	Timeline
CWC and Council "Approval for public comment"	<ul style="list-style-type: none"> • CWC Meeting – July 17 • Council - July 24 	July 2018
Seek Community Feedback on Action Plan	<ul style="list-style-type: none"> • Interactive WhyWaste website • Circulate to Stakeholder Groups • Attend Gathering on the Green II • Presentations to WMCLC and ACE 	July to Sept., 2018

Why Waste? **TOR Development**

- **Early Draft – MECP**
- **Draft Proposed ToR – All Stakeholders**
 - Formal Notice in Newspaper, Project Website
 - Direct notice to stakeholders (Government Review Team, community groups including ACE, Indigenous Communities, etc.)



Why Waste? **Draft Proposed ToR Summary of Comments**

	Stakeholder	Comments	
		#	Subject
GRT	MECP (EA)	40	EA Process/ General
	MECP (Air Quality)	10	Air Quality
	MTCS	6	Archaeology & Built Heritage
	MTO	5	Transportation
	KCCA	7	Surface Water
Public	Written comments (1 person)	12	General
	Project website (6 persons)	6	General
Total		86	

Why Waste? **Proposed TOR Summary of Changes from Draft**

No change/Minor Changes	(46)
Additional Details/Clarification	(35)
Change to Technical Studies	(1)
Change to EA Process	(1)
Change to List of Commitments	(2)
Change to Undertaking	(1)
• Reduction in waste from proposed regional service area	

Why Waste? **Next Steps – 60% & ToR**

60% Next Steps	Comments	Timeline
Final Comments Action Plan	• Public Participation Meeting at CWC	September 25, 2018
CWC and Council Approval	• To be determined	October 2018 to early 2019
ToR Next Steps	Comments	Timeline
Final Comments ToR (EA)	• Public Participation Meeting at CWC	September 25, 2018
Council Approval	• To be determined	October 2, 2018
MECP Process	• Submission and MECP process	Approval by Minister in 2019