

Why Waste?

Proposed Terms of Reference Expansion of the W12A Landfill

Waste Management Working Group
August 15, 2018





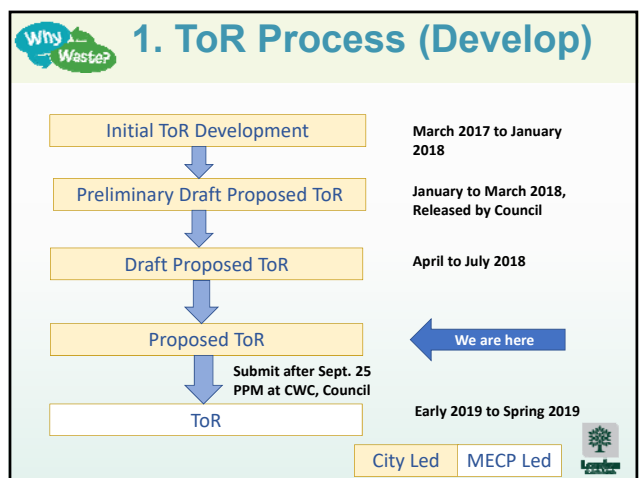
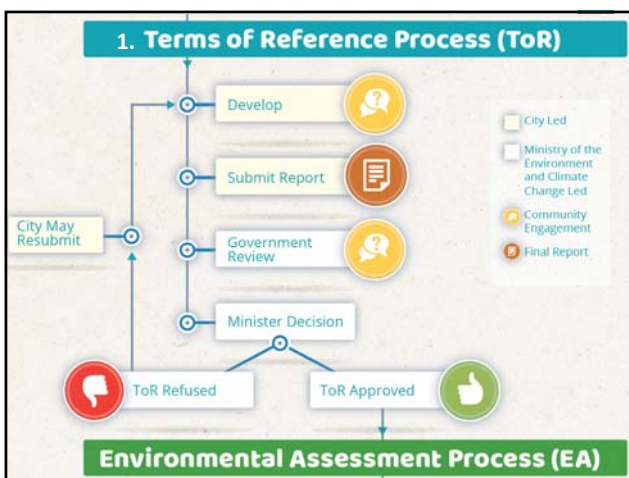
Why Waste?

August 3, 2018

Outline

1. ToR Process
2. Overview - ToR
3. Summary of Comments
4. Other

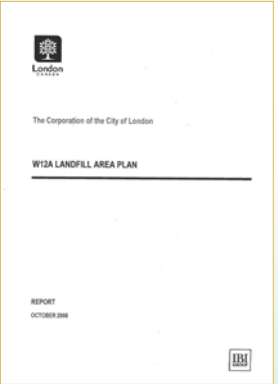
Volume I
Proposed Terms of Reference
Environmental Assessment of the Proposed W12A Landfill Expansion, City of London

Why Waste?

2: ToR Overview (Disposal Method)

Expansion of the W12A Landfill is the most appropriate disposal option based on previous waste plan studies (2008)



Why Waste?

2: ToR Overview (Diversion)

Setting a new goal for Waste Diversion by 2022.



Category	Percentage of Waste Diverted
TODAY	45%
2022 GOAL	60%

Why Waste?

2: ToR Overview (Planning Period)

Plan for additional 25 years (2025 – 2050)

- Maximum supported by MECP staff
- The London Plan in effect until 2035
- Waste disposal security for at least 6 terms of Municipal Council
- Consistent with *Waste-Free Ontario Act*

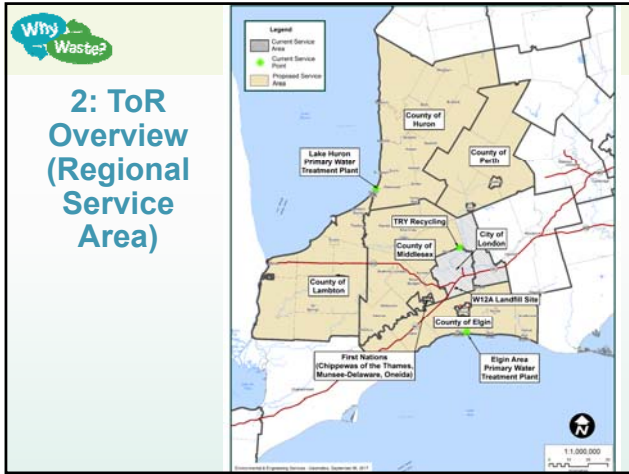


Why Waste?

2: ToR Overview (Limit on Annual Tonnage)

- Current limit = 650,000 tonne/year
- **Proposed limit = 500,000 tonne/year**

Consideration	Average (Tonnes)	Peak (Tonnes)
Existing Service Area	370,000	380,000
Expanded Service Area	24,000	40,000
Contingency	-	80,000
Total	-	500,000



2. ToR Overview (EA Studies)


Category	Proposed Environmental Components	
	Environmental Component	Environmental Sub-components
Environmental	Atmosphere	<ul style="list-style-type: none"> Air quality (including dust, odour and greenhouse gases) Noise
	Biology	<ul style="list-style-type: none"> Aquatic ecosystems Terrestrial ecosystems
	Geology & Hydrogeology	<ul style="list-style-type: none"> Groundwater quality
	Surface Water	<ul style="list-style-type: none"> Surface water quality Surface water quantity
Social	Agriculture	<ul style="list-style-type: none"> Agriculture
	Archaeology	<ul style="list-style-type: none"> Archaeology
	Culture	<ul style="list-style-type: none"> Cultural heritage landscapes Cultural heritage resources (including built heritage)
	Land Use	<ul style="list-style-type: none"> Current and planned future land uses
	Socio-economic	<ul style="list-style-type: none"> Local economy Residents and community
Visual	<ul style="list-style-type: none"> Visual 	
Technical	Design and Operations	<ul style="list-style-type: none"> Technical Considerations Financial Considerations
	Transportation	<ul style="list-style-type: none"> Traffic

Provincial Direction

Year	Gov't	Act/Direction	Diversion Level
2018 -	PC		
2003 - 2018	Liberal	Waste-Free Ontario Act, 2016 60% Waste Diversion Goal (2004)	Adjusted - 30% by 2020; 50% by 2030; 80% by 2050 Added - 60% by 2008
1995 - 2003	PC	Waste Diversion Act, 2002	Added - 60% recovery of Blue Box materials
1990 - 1995	NDP	Environmental Protection Act (3Rs Regs – 1994)	Confirmed - 50% by 2000
1985 - 1990	Liberal	Waste Reduction Action Plan (1989)	50% by 2000 25% by 1992
1981 - 1985	PC	Blueprint for waste management (1983)	

3. Summary of Comments

Stakeholder	Comments	
	#	Subject
GRT	MECP (EA)	40 EA Process/ General
	MECP (Air Quality)	10 Air Quality
	MTCS	6 Archaeology & Built Heritage
	MTO	5 Transportation
	KCCA	7 Surface Water
Public	Written comments (1 person)	12 General
	Project website (6 persons)	6 General
Total		86


 **3. Summary of Comments**

No change/Minor Changes (46)

Additional Details/Clarification (35)

Examples...

- More details on where MHSW goes
- More details on MRF
- Difference between phase 1 and 2 portions of the landfill

 **3. Summary of Comments**

Change to Technical Studies (1)

Will consider developing site-specific emission rates for air contaminants

Changes to EA Process (1)

Alternatives methods (expansion alternatives) to be finalized in EA

 **3. Summary of Comments**

Changes to List of Commitments (2)

Commit to:

1. 60% residential diversion
2. Meet outside of planned public engagement
3. **Post-closure commitments**
4. **Share final (technical study) workplans**

 **3. Summary of Comments**

Change to Undertaking (1)

Reduction in waste from proposed regional service area.

- 1.3 million tonnes down to 0.6 million tonnes
- No change to proposed service area
- Potential increase in net landfill cost
- Minor reduction in landfill height

Why Waste? **4: Other Updates**

60% Waste Diversion Action Plan

- Project website – Feedback Request
- Circulation to stakeholders
- Gather on the Green II (August 19)
- WMCLC (August 20)
- ACE (September 5)
- PPM (September 25)




Why Waste? **4: Other Updates**

Resource Recovery

- Request for Information
 - ✓ 26 responses
 - ✓ Further review underway
- London Waste to Resources Innovation Centre
 - ✓ ICFAR NSERC initiative



