




## King Street Cycle Lane Improvements





Cycling Advisory Committee – August 15, 2018





## Council Resolution


- That, the following actions be taken with respect to the cycle tracks located on King Street between Ridout Street and Colborne Street and the new north-south cycle track:
  - a) the Managing Director, Environmental and Engineering Services and City Engineer BE DIRECTED to report back to the Civic Works Committee by no later than September 2018 with recommended options and associated costs, that Municipal Council may consider for implementation, that would result in enhanced safety for cyclists using the bike lane on King Street between Ridout Street and Colborne Street, and the new north-south cycle track with possible options that may include, but not be limited to, reduced parking on the south side of King Street, the installation of barriers, such as planters, to create a protected bike lane and appropriate signage; it being noted that there are physical constraints in this area, with frequent public transit stops located along this route;
  - b) the Managing Director, Environmental and Engineering Services and City Engineer BE DIRECTED to consult with the London Transit Commission, the Downtown Business Improvement Association and the City of London Cycling Advisory Committee to seek input with respect to possible interim options to address the concerns raised by members of the public;
  - c) the Managing Director, Environmental and Engineering Services and City Engineer BE DIRECTED to enhance communication efforts to improve drivers awareness of cyclists using King Street the need to ensure the safety of all road users; and,
  - d) the London Police Service BE REQUESTED to increase their enforcement in this area location, with a focus on driver behaviours that may adversely impact the safety of cyclists;
- it being noted that the Civic Works Committee received the following communications with respect to this matter:

## Study Area




King Street from Ridout Street to Colborne Street

## Consultant

- WSP retained to help review areas of high conflict such as:
  - Intersections
  - Parking garages/Driveways
  - Transit Stops
  - Develop and recommend designs to help facilitate cyclist turning movements






## Stakeholder Consultation

- Cycling Advisory Committee
- London Transit Commission
- London Police Services
- Downtown Business Improvement Association (BIA)
- London Cycle Link




5



## Evaluation Criteria

- Conflict Mitigation
- Constructability
- Parking and loading zones
- Transit operations
- Traffic operations
- Cost
- Equitable



6



## Design Alternatives

### King Street - Alternative 1a




7



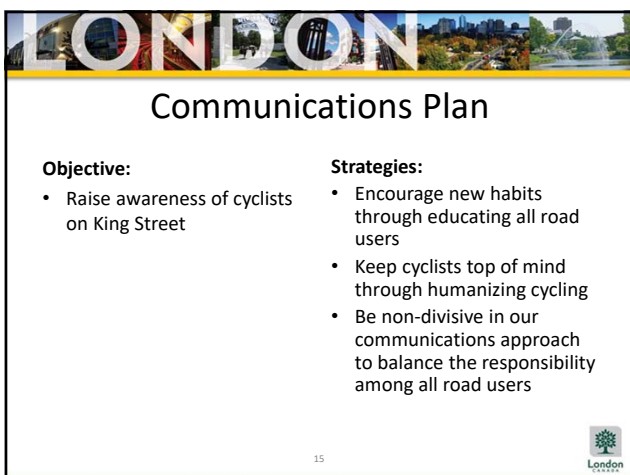
## Design Alternatives – continued.

### King Street - Alternative 1b



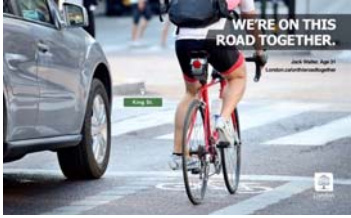

8







## Volunteers



17



Questions?

18

