

# Trees and Forests Advisory Committee

## Report

6th Meeting of the Trees and Forests Advisory Committee  
June 27, 2018  
Committee Room #3

Attendance                   PRESENT: R. Mannella (Chair), J. Kogelheide, A. Meilutis, A. Morrison, N. St. Amour, M. Szabo, S. Teichert, R. Walker and P. Shack (Secretary)

ABSENT: C. Haindl, T. Khan, C. Linton and G. Mitchell

ALSO PRESENT: A. Beaton, J. Ramsay S. Rowland and J. Spence

The meeting was called to order at 12:15 PM.

### 1. Call to Order

#### 1.1 Disclosures of Pecuniary Interest

That it BE NOTED that no pecuniary interests were disclosed.

### 2. Scheduled Items

#### 2.1 Shade Policy and Naturalization Policy within the Parks & Recreation Master Plan

That it BE NOTED the attached presentation from A. Cantell, Reforest London, with respect to the Shade Policy and Naturalization Policy within the Parks & Recreation Master Plan, was received.

#### 2.2 Tree Protection By-Law Amendments and Implementation Update Report.

That the following actions be taken with respect to the Tree Protection By-Law Amendments and Implementation Update Report, dated June 18, 2018 as presented to the Planning and Environment Committee:

a) it BE NOTED that the attached presentation from S. Rowland, Urban Forestry Planner, with respect to the Tree Protection By-Law Amendments and Implementation Update Report, was received; and,

b) a Working Group BE ESTABLISHED, consisting of J. Spence, A. Morrison, A. Melitus, M. Szabo, S. Teichert and M. Hooydonk, to review the above noted report, and to report back at the July meeting of the Trees and Forests Advisory Committee with input on the proposed amendments.

### 3. Consent

#### 3.1 5th Report of the Trees and Forests Advisory Committee

That it BE NOTED that the 5th Report of the Trees and Forests Advisory Committee, from its meeting held on May 23, 2018, was received.

#### 3.2 Municipal Council Resolution - New Trees and Forests Advisory Committee Members

That it BE NOTED that the Municipal Council Resolution, from its meeting held on June 12, 2018, with respect to the new Trees and Forests Advisory Committee Members, was received.

**4. Sub-Committees and Working Groups**

4.1 Parks & Recreation Master Plan Working Group

That it BE NOTED that the attached presentation from A. Morrison, with respect to the Parks & Recreation Master Plan Working Group update, was received;

it being noted that the working group requested this matter be added to the next agenda for follow-up.

**5. Items for Discussion**

5.1 Planting Areas Update

That it BE NOTED that the update from J. Ramsay, Forestry Technologist, with respect to the Planting Areas, was received.

5.2 Summer Meeting Schedule

That it BE NOTED that the Trees and Forests Advisory Committee will meet over the summer on July 25, 2018 and August 22, 2018.

**6. Deferred Matters/Additional Business**

None.

**7. Adjournment**

The meeting adjourned at 1:40 PM.

# PARKS & RECREATION MASTER PLAN

Tree and Forest Related Topics

Amber Cantell  
ReForest London

June 27, 2018

## Shade Policy

- Shade policies are used in many cities around the world (including Toronto) as a way of ensuring that the use of recreational spaces does not lead to excess UV radiation exposure
- Make play safer and recreational spaces more attractive/pleasant to use
  - London already very hot in summer, and with climate change, expected to get a lot hotter

## Shade Policy

- Shade policies include not only trees, but also often manmade options such as shade sails
- Often developed in partnership with local Health Unit
- TFAC received a presentation from students from the Environment and Health Promotion Program at Western University in Fall, 2016



## Shade Policy

- TFAC submitted the following recommendation to PEC at their Dec. 12, 2016 meeting:  
 "That Civic Administration BE REQUESTED to consider a minimum shade standard for parks, especially defined recreational spaces within parks, such as playgrounds and around sports fields, to ensure that upcoming planting efforts maximize the public health benefit of trees and the shade they produce for youth and other park users;"
- This motion was unanimously passed by the councillors
- If no progress has been made yet, we'd propose that the Parks & Recreation Master Plan might be a good "home" for a shade policy

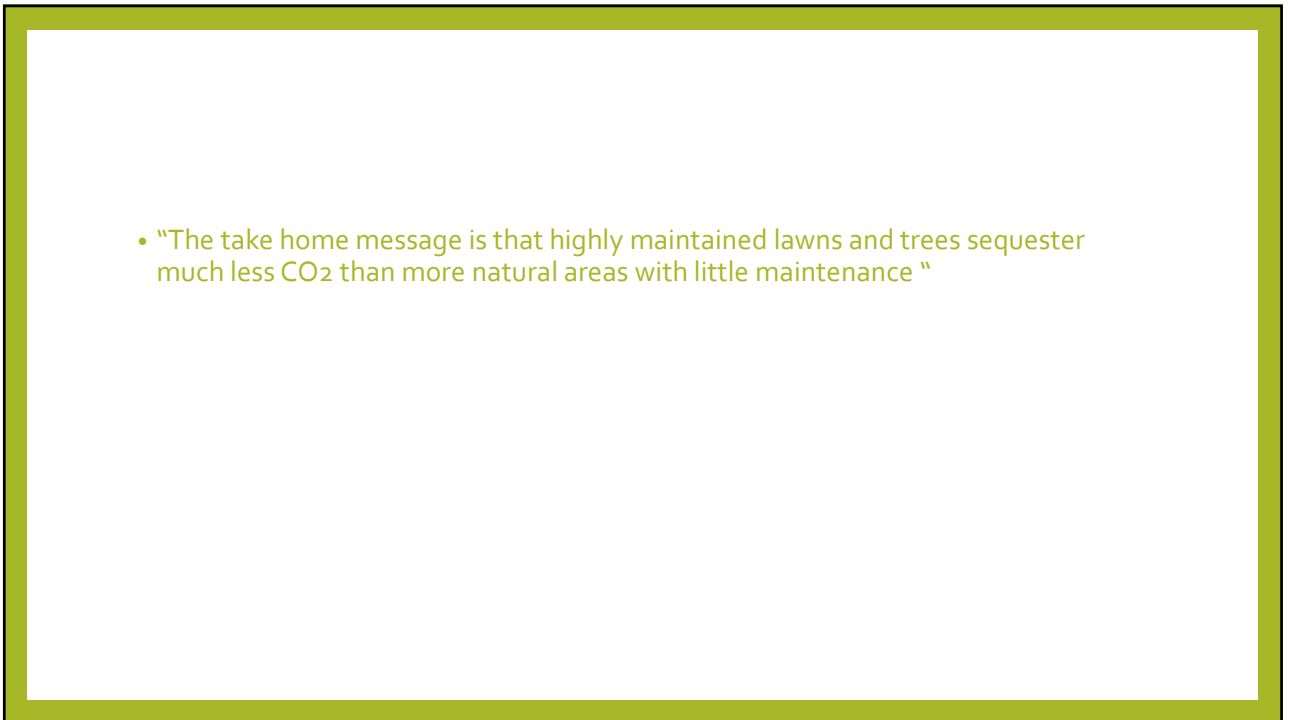
## Naturalization Policy

- Consultants working on Parks & Recreation Master Plan have communicated that environmental issues are to be addressed in other policies, such as the Natural Heritage Strategy and ESA policies
  - But those only deal with **existing** natural heritage where there is generally low need and desire to plant
- Parks Planning & Design had staff working on a naturalization policy prior to 2011 (believed to be 2009 – 2010?), but was never finalized
- A Naturalization Policy could:
  - Help establish and identify suitable spaces for naturalizing
  - Define education and outreach program for naturalization initiatives
  - Provide a process for “what to do” in instances of NIMBYism

- That the Parks & Recreation Master Plan explicitly recognize the importance park spaces play in our local environment, and that park spaces should be designed in such a way as to enhance the environmental benefits they offer
- That the creation of a Shade Policy be included as a task item under the Parks & Recreation Master Plan
- That the creation of a Naturalization Policy be included as a task item under the Parks & Recreation Master Plan



- "The take home message is that highly maintained lawns and trees sequester much less CO<sub>2</sub> than more natural areas with little maintenance "





London  
CANADA

## Tree Protection By-law C.P.-1515-228



Trees & Forests Advisory Committee  
June 27, 2018



London  
CANADA

## Overview

### We Are “The Forest City”

#### Urban Forest Strategy (2014) – “Protect More”

- Distinctive Trees (UGB) 50cm+
- Tree Protection Areas - mapped, City-wide, all trees regardless of size

#### What We Have Learned

- Public outreach and engagement; consulted with those that went through the permitting process
- Challenges with administration of By-law and building things as we needed them





## How Did We Listen?

### Tree Care Professionals & Industry Consultants

- February 2018
- “Global café” meeting at Civic Gardens
- 20+ attendees, 16 different companies
- Round table discussions
- Q & A

### Residents & Home-owners

- Online survey  
+ comments to staff

### Other

- Developers one-on-one conversation
- London Development Institute (LDI) meeting
- London Planners Lunch



## What We Heard

### Generally, the By-law is a good thing

- More trees being pruned instead of removed
- \$100 fee is okay (some exceptions) for Distinctive Tree
- Understood the value of trees; some recommended that trees of smaller size should be protected
- Satisfied people - tended to be quiet or did not feel the need to attend meetings

*“I appreciate the value of this program.*

*The City is losing too much of its forest cover and we must act to protect the little that remains”.*

*“When I called the dept. someone came to inspect the tree and advised that the tree needed to come down for safety reasons.*

*The permit was expedited. It's a good by-law and we were happy to comply”.*

*“Process went smoothly. City staff were great to work with”.*





## What We Heard

### But.....

- Public generally unaware it applied to their tree
- Fee for trees in woodlands (TPAs) \$1,000 is too steep
- Reported uptick in healthy tree removal <50cm DT size threshold
- “Fly by night” tree care company operators
- Process takes too long and is unclear
  - Cemeteries and golf courses need to be able to submit one-tree, or few-tree, applications
  - Need electronic submission - online payment system, fillable forms



## Challenges with Administration

### Taking longer than expected

- Enforcement challenges, delays in Urban Forest Strategy implementation and project work
- Fee taking, keeping, returning
- No fillable forms – manual entry, multiple places
- Secure Urban Forestry data storage system
- Preparation & Attending appeals; court hearings
- Direction from Hearing Officer’s decisions
- Slipping from ~2 weeks to ~6 weeks (down 1 staff)



## What We Propose to Do

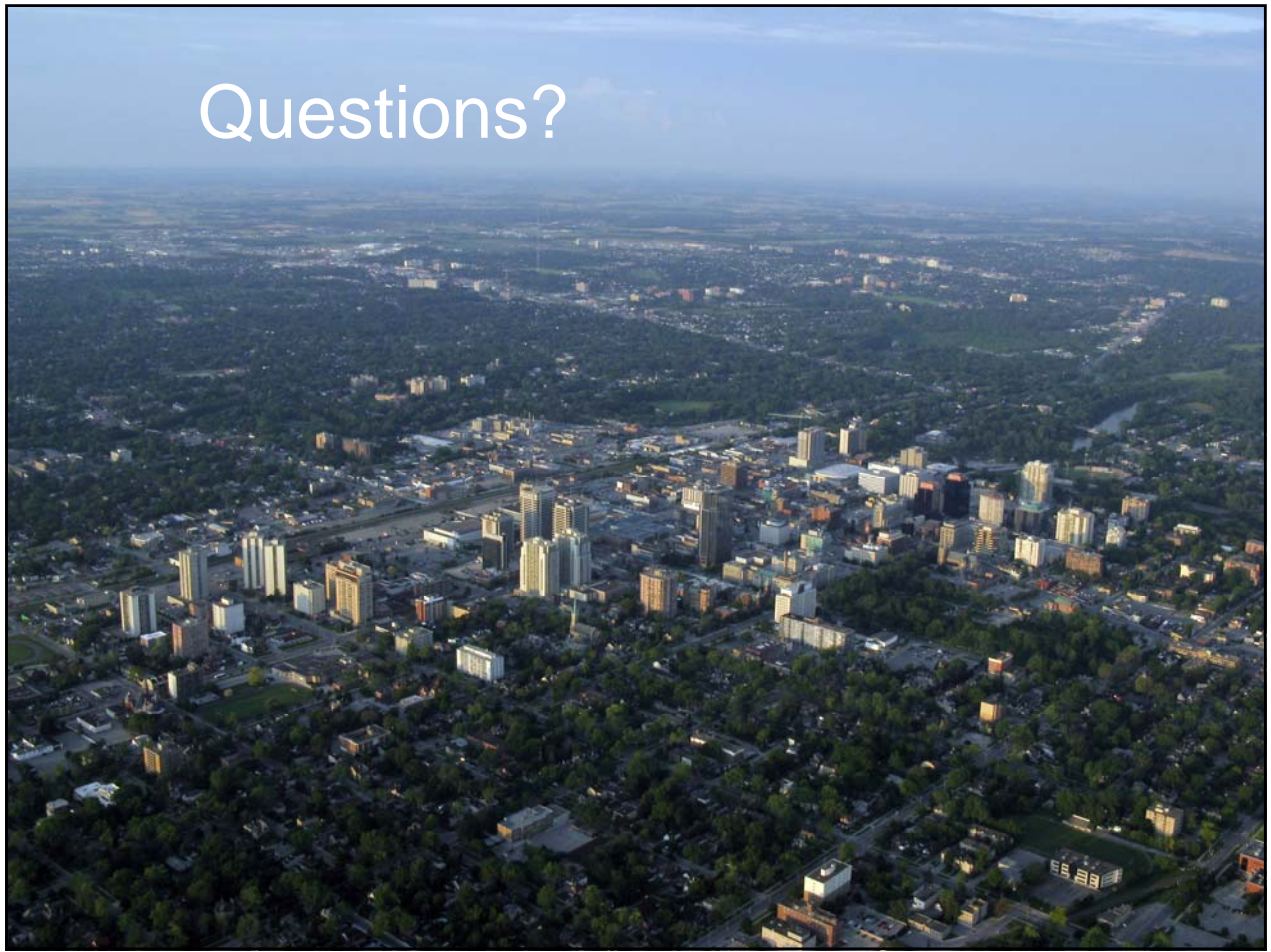
### Create Simplified Process & Clear Guidance

- “DDT” – Dead Distinctive Tree permit (no fee; no replanting)
- Application requirements vs additional information
- When a permit shall issue - swimming pool installation, building permits
- Replanting requirements
- No 5+ year plan for cemeteries & golf course
- \$100 flat permit fee (some exception); add \$100 fee to Appeal
- Only Landowner, or agent, may apply for a Permit
- Requesting fillable forms, online payment (2019)



## Next Steps

- Trees & Forests Advisory Committee
- Receive and consider public comments – until August 2018
- Present new Tree Protection By-law September 24, 2018 (public participation meeting)
- Existing By-law remains in force and effect for now
- Repeal and replace by year end 2018



## Preliminary review of the Parks and Recreation Master Plan

A working group (WG) was formed to review the Parks & Recreation Master plan (P&RMP) in the light of presentation made on P&RMP-update before the the TFAC dated May 23.

P&RMP is a comprehensive document developed over the years so it was not possible to have complete review in one session of WG meeting however deliberations were made on the presentation's contents against the backdrop of P&RMP. Nevertheless WG will keep working on P&RMP review, a little bit more detailed/formal document on proposed recommendations may be shared in July 24th meeting for TFAC's approval and onward communication to staff.

The intent of the May 23rd presentation on P&RMP-update was to seek the input from TFAC on following points:

- a. Community Survey ( [getinvolved.london.ca](http://getinvolved.london.ca))
  - b. Share information with staff about groups/organizations which may be invited to stakeholder sessions.
  - c. TFAC's written response to the questions
  - d. TFAC's comments on P&RMP 2009 and its interim update (Jan 2017)
- **Guiding Questions:**
    1. Most pressing issues and priorities for TFAC
    2. How Parks, recreation and Sport services continue to support TFAC.
    3. How TFAC, City and others work together to meet future needs.
    4. Initiatives those are being contemplated, planned or are implemented that could tie into priorities for parks, recreations and sport services and facilities.

WG has considered and discussed each point in details, the crux of discussion have been summarized as follow:

### a) Community Survey:

Community survey launched by city staff is a well designed comprehensive survey contains 23 carefully crafted questions. Efforts made through survey is not only to obtain opinion from Londoners about their satisfaction on Parks & recreation related facilities available in city but also citizens are encouraged and provided with opportunity so they may propose any new facility/service they feel currently not available but would like to see be made available by the City.

Keeping in view the implementation of P&RMP during next decade, it is very important that special efforts may be made by city and advisory committees to maximize the

participation by Londoners of all active/effective age groups in the survey so that their input & suggestions may be incorporated in Jan 2019 P&RMP-update. Thanks to social media, we are all connected and virtually online with each other all the times. It is far easy to reach into masses in present days as compared with recent past when electronic and print media were the main players for information dissemination. Everyone with a smart phone equipped with social and mass interaction apps like, Facebook, WhatsApp, Youtube, etc is potentially roaming around with a broadcast/telecast gateway station in his/her hand.

### **Recommendations:**

- Social media may greatly increase the participation of Londoners in the survey. Effective use of social media may be applied to disseminate information about the survey and persuade Londoners to participate and provide their input. A Facebook page showing this 'Survey' as an important virtual event in London, may be developed & deployed by the TFAC. This Facebook page may be shared among circles of friends in London as well as with other Advisory committees so their members may also share within their circles to persuade Londoners to participate in survey.
- Electronic kiosks and Printed version of survey may be made available at designated stalls at :
  - Special events places (e.g Victoria park)
  - Crowded places like covent garden market etc
  - Shopping malls, plaza's
  - Community centres and recreation facilities
  - Public Libraries
  - Worshipping places etc so visitors may have opportunity to participate if they have missed other communication mediums.
- The Survey was supposed to be in multiple languages to extent its better understandability and reach to all ethnic communities in London. If possible other languages modules may be developed and deployed asap.
- Presently survey will remain open till July 23, if possible its date may be extended to end of July.

### **b) Share information with staff about groups/organizations which may be invited to stakeholder sessions.**

Stakeholder sessions were held on May 28, 30 and June 4. Though date has been passed for these sessions but TFAC may still identify interested groups/ organizations and communicate their contacts to staff so they may be contacted during additional public engagement period in late 2018.

### **c) TFAC's written response to the questions**

Response to the questions have been provided under *Guide Questions* section below.

### **e) TFAC's comments on P&RMP 2009 and its interim update (Jan 2017)**

WG is still reviewing the P&RMP 2009 and its interim update (Jan 2017). A more detailed document will be shared in July 24th TFAC meeting however, during WG meeting, in a preliminary review session, it has been felt that the inventory of athletic and community facilities presently available is somewhat narrow. According to 2016 census, 56% of population falls in age group of 35-69yrs age group, 11% falls in 10-19yrs and 22% falls in 20-34yrs age group. In order to promote healthy physical activities specially among these age groups a wider variety of sports and recreational facilities are in demand by our community.

### **Recommendations:**

- A good example about narrow inventory of athletic and community facilities would be trampoline parks as three private businesses opened up in London this past year.
- Rock Climbing facilities are also quite popular and could be offered at a city facility.
- Cricket was once the most popular sport in Canada until the early 20th Century before it was overtaken by hockey. Due to its popularity at that time it was declared the national sport by Sir John A. Macdonald, the first Prime Minister of Canada. Cricket, today, is a popular minority sport in Canada but it is growing very fast, presently there are well over 40,000 cricketers across the nation. There used to be only one Cricket club in London, but during last 5 years due to increasing popularity of Cricket, 5-6 more clubs have emerged. To cater for space requirement for these groups City added a cricket Pitch at North London Athletic fields during 2014 but due to increasing numbers of new clubs players need more facilities both in indoor and outdoor settings.

## **Guiding Questions**

### **1. Issues and Priorities**

- Green spaces and recreation facilities often accompany each other. Trees will always be a part of the equation. Ensuring that trees continue to populate our recreational areas, where they can be enjoyed by everyone. Planting should consider realistic operational needs of recreational facilities. Maintenance operations, parking, etc.

## 4.1

- Making sure that the trees of London are well taken care of, as they represent the city's namesake, and that more trees continue to be planted on streets, private land, and shared recreational areas, while keeping as many of the older ones as possible.
- Future trimming and maintenance work could be held in priority to ensure safety to families and patrons.
- Ensuring that London's citizens value their legacy by actively engaging them in helping to maintain the trees on public and private lands, and planting more.

## **2. Recreation Services and Facilities Support**

- Parks and Recreation facilities are a good opportunity for community awareness related to tree issues. Utilize signage and extra space in the facilities to offer information to residents about related planting, naturalization, ongoing efforts of reforest London, etc.
- By including tree plantings and tree maintenance feature in all parks and recreational areas, and engaging public participation in planting activities.
- Let tree related communities can use these facilities to have events (reforest London tree giveaway).
- By encouraging engagement in outdoor recreational spaces through sporting activities and other events throughout the year (including activities that involve the trees themselves such as zip lining, tree climbing, etc.)
- Setting out more picnic tables in parks across the city to encourage use by citizens and tourists.
- Increase the number of dog parks throughout the city so that more people can access one within their area (there is a real community feel in these parks where people like to gather and chat with other dog owners); maintain the trees and shrubs in these parks to keep the parklike aesthetic.”

### **3. How can TFAC, City and other work together.**

- Awareness of trees, tree health, planting, benefits, etc. need to be communicated to the public and these facilities are great opportunities to do so.
- Widely promoting opportunities for public engagement/feedback, open dialogue, etc., in city planning – and then listening to that input.
- By including environmental groups, businesses, tree related communities and , Advisory committees like ACE, EEPAC, AAC in discussions and plans for London's future urban forest

### **3. Initiatives.**

- Continue to plant more trees in public spaces, but also encourage the public, through wide-scale advertising, to help care for the trees planted in each neighbourhood park (helping to water, etc.) to reduce the number of trees lost to weather conditions. (The hope being that in doing so, residents would feel more invested in ensuring the trees in their parks do well.)

**Marge Szabo**

**Alex . Morrison**

**Tariq Khan**





# Preliminary review of the Parks and Recreation Master Plan Update

WG : Alex, Marg, Khan



May 23rd presentation on P&RMP




**Play Your Way!** Advisory Committee Input

- Individuals can complete the Community Survey at [getinvolved.london.ca](http://getinvolved.london.ca)
- Tell us about groups or organizations that we should invite to the Stakeholder sessions
- Committee can provide written responses to the Questions

AND / OR

- Committee can provide comments on the last Parks and Recreation Strategic Master Plan (2009) and Interim Update (Jan. 2017)


Email to: [PlayYourWay@london.ca](mailto:PlayYourWay@london.ca)



**Play Your Way!** Advisory Committee Input

Guiding Questions

1. What are the most pressing issues and priorities for your Advisory Committee?
2. How can the City of London's parks, recreation and sport services and facilities continue to support the needs of your Committee? Please be specific.
3. How can your Committee, the City and others work together to meet future needs?
4. Are there any initiatives that are being contemplated, planned or are being implemented that could tie into these or other priorities for parks, recreation and sport services and facilities?




May 23rd presentation on P&RMP



### Community Survey



- 23 carefully crafted questions.
- Opinion from Public on Facilities & Service delivery.
- What new facility/service needed to be added.

Keeping in view the implementation of P&RMP during next decade, it is very important to maximize the participation of Londoners from all active/effective age groups in the survey.



Preliminary review of the Parks and Recreation Master Plan Update

May 23rd presentation on P&RMP



### Recommendations



- Social Media 

A Facebook page showing 'Survey' as an important virtual event in London, may be developed by the TFAC. This Facebook page may be shared among circles of friends in London as well as with other Advisory committees so their members may also share within their circles to persuade Londoners to participate.

- Electronic Kiosks & temporary booths
  - Special events places (e.g Victoria park)
  - Crowded places like covent garden market etc
  - Shopping malls, plaza's
  - Community centres, Public Libraries



Preliminary review of the Parks and Recreation Master Plan Update

May 23rd presentation on P&RMP



### Stakeholders sessions

- Groups/Organizations info sharing with City



Stakeholder sessions were held on May 28, 30 and June 4. Though date has been passed for these sessions but TFAC may still identify interested groups/ organizations and communicate their contacts to staff so they may be contacted during additional public engagement period in late 2018.



May 23rd presentation on P&RMP



### P&RMP interim update

- WG is still reviewing P&RMP.....



It has been felt that the inventory of athletic and community facilities presently available is somewhat narrow. A wider variety of sports and recreational facilities are in demand by our community.

- Facilities may be added into P&RMP
  - Trampoline parks -3new business opened.
  - Rock Climbing facilities.
  - Zip lining & Tree climbing.
  - Cricket facilities (Indoor & Outdoor).





### Guiding Questions



- Issues and Priorities

- Ensuring that trees continue to populate.
- Making sure that the trees of London are well taken care of, as they represent the city's namesake.
- More trees continue to be planted on streets, private land, and shared recreational areas.
- Keeping as many of the older ones as possible.
- Future trimming and maintenance work.
- Ensuring that London's citizens value their legacy by actively engaging them.



### Guiding Questions



- Recreation Services and Facilities Support

- Parks and Recreation facilities are a good opportunity for community awareness related to tree issues.
- Inclusion of tree plantings and tree maintenance feature in all parks and recreational areas.
- Let tree related communities can use these facilities to have events.
- Encouraging engagement in outdoor recreational spaces through sporting activities.
- Setting out more picnic tables in parks.
- Increase the number of dog parks.





### Guiding Questions



- How can TFAC, City and other work together
  - Awareness of trees, tree health, planting, benefits, etc.
  - Widely promoting opportunities for public engagement/ feedback, open dialogue, etc., in city planning – and then listening to that input.
  - By including environmental groups, businesses, tree related communities and , Advisory committees like ACE, EEPAC, AAC in discussions and plans for London’s future urban forest.



### Guiding Questions



- Initiatives
  - Continue to plant more trees in public spaces, but also encourage the public, through wide-scale advertising, to help care for the trees planted in each neighbourhood park (helping to water, etc.) to reduce the number of trees lost to weather conditions.



Thanks

