

Accessibility Advisory Committee

Report

6th Meeting of the Accessibility Advisory Committee
June 28, 2018
Committee Room #4

Attendance PRESENT: J. Madden (Chair), M. Cairns, L. Chappell, M. Dawthorne, N. Judges, J. Menard, P. Quesnel, K. Schmidt and J. Bunn (Secretary)

ABSENT: A. Forrest, J. Higgins, P. Moore, K. Ramer and F. Simmons

ALSO PRESENT: K. Broderick, J. Clair, K. Cook, C. Da Silva, P. Foto, K. Husain and J.P. McGonigle

The meeting was called to order at 3:00 PM.

1. Call to Order

1.1 Disclosures of Pecuniary Interest

That it BE NOTED that no pecuniary interests were disclosed.

2. Scheduled Items

2.1 Accessible Employment

That it BE NOTED that the attached presentation from P. Foto, Manager III, Talent Management and K. Cook, Recruitment Specialist, with respect to Accessible Employment at the City of London, was received.

2.2 Adults with Autism Spectrum Disorder

That a representative from Parks and Recreation BE REQUESTED to attend a future meeting of the Accessibility Advisory Committee to update the committee on measures being taken to assist individuals with Autism Spectrum Disorder at City of London facilities; it being noted that the attached presentation from J. Clair, was received with respect to this matter.

2.3 Outdoor Events Guide Update

That the Special Events Council Policies Manual and the Special Events Administrative Procedures Manual BE REFERRED to the Policy Sub-Committee for review; it being noted that the attached presentation from J.P. McGonigle, Division Manager, Parks and Recreation and K. Broderick, Manager, Special Events and Community Rentals with respect to and update on the Outdoor Events Guide, was received.

3. Consent

3.1 5th Report of the Accessibility Advisory Committee

That it BE NOTED that the 5th Report of the Accessibility Advisory Committee on the Environment, from its meeting on May 24, 2018, was received.

3.2 Municipal Council Resolution - 4th Report of the Accessibility Advisory Committee

That it BE NOTED that the Municipal Council resolution, from its meeting held on June 12, 2018, with respect to the 4th Report of the Accessibility Advisory Committee and its delegation before the Community and Protective Services Committee, was received.

4. Sub-Committees and Working Groups

4.1 Built Environment Sub-Committee Report

That the following actions be taken with respect to the Built Environment Sub-Committee report from its meeting held on June 11, 2018:

- a) the Civic Administration BE REQUESTED to attend a future Built Environment Sub-Committee meeting to review the London Complete Streets Design Manual in more detail and give the sub-committee more time to provide feedback; and,
- b) the Civic Administration BE REQUESTED to attend a future meeting of the Accessibility Advisory Committee to discuss traffic calming measures used in the City of London and the effects of those measures on people with disabilities.

5. Items for Discussion

5.1 Statement at Council and Standing Committee Meetings – Supportive Devices

That the following actions be taken with respect to the revised communication dated May 22, 2018, from the City Clerk, with respect to the statement at Council and Standing Committee meetings regarding supportive devices:

- a) the City Clerk BE REQUESTED to post the statement contained in the above-noted communication on all Advisory Committee agendas; and,
- b) all Committee Chairs BE REQUESTED to read the above-noted statement aloud prior to each Committee meeting.

5.2 Meeting with the Mayor and Members of Council

That it BE NOTED that a verbal update from J. Madden, with respect to the meeting with the Mayor and members of the ACCAC that occurred on the morning on June 28, 2018, was received; it being noted that the Accessibility Advisory Committee held a general discussion with respect to this matter.

5.3 Summer Meeting Schedule

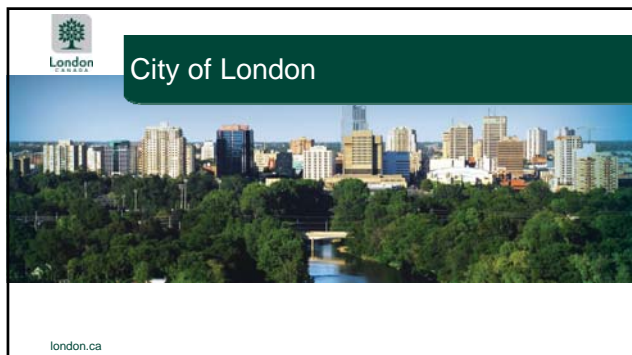
That it BE NOTED that the next meeting of the Accessibility Advisory Committee will be held on July 26, 2018.

6. Deferred Matters/Additional Business

None.

7. Adjournment

The meeting adjourned at 5:00 PM.



Agenda

- What are we doing?
- Accommodations
- Impacts
- Next Steps

london.ca

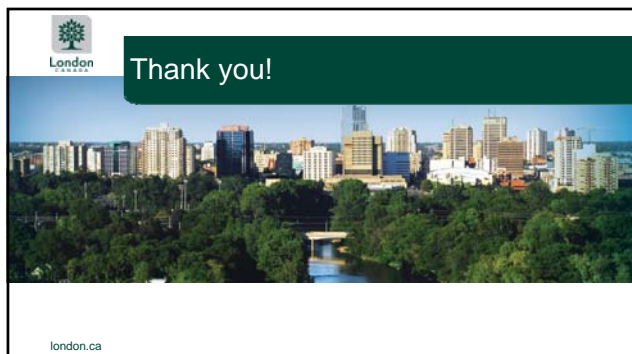
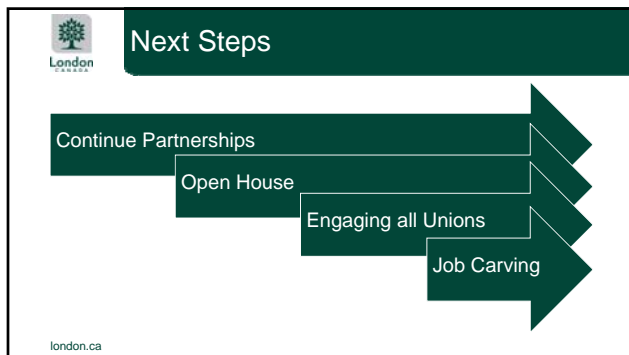
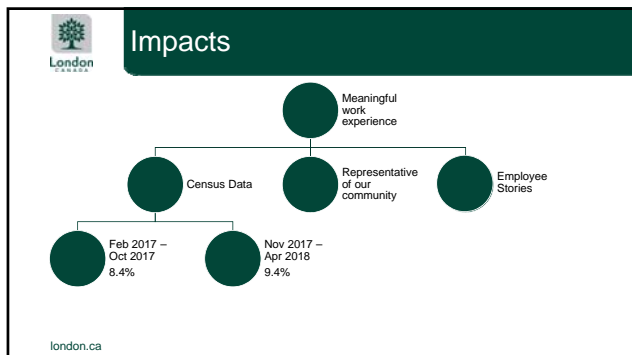


Accommodations

Available at ALL stages of recruitment process

- Communication devices
- Accessible work stations
- Start time
- Testing

london.ca



RECREATIONAL AND LEISURE SERVICES FOR ADULTS WITH ASD

Prepared for the Accessibility Advisory Committee

Agenda

- What is ASD?
- Discussion
- Available Services
- Recommendations
- Conclusion

Disclaimer

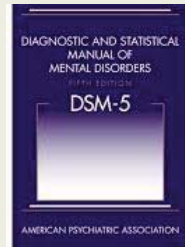
I am not a member of the neurodiverse community, nor am I on the spectrum.

What is ASD?

- “[A] wide range of behavioural challenges stemming from difficulty in verbalizing thoughts, managing anxiety, dealing with change, participating in group activities, disengaging from discussions on a specific topic – all leading to problems in coping with everyday activities” (Autism Ontario, 2007).
- “[P]ersistent deficits in social communication/interaction across contexts” (DSM-5, 2013).

The Importance of Using 'ASD'

- The American Psychiatric Association changed the definition of 'autism' to 'autism spectrum disorder' in 2013.
- The DSM-V definition encompasses research literature and clinical experience which transpired since the publication of the DSM-IV (1994).



Discussion - Raising Awareness

- Children with autism are bullied at a rate three times that of typically developing children" (Hoover and Kaufman qtg. Maiano et al., 2018).
- 50% of people with ASD also suffer from depression (Richa et al., 2014).
- Anxiety is one of the most prevalent comorbidities in children with ASD, with at least 40% of children with ASD meeting the criteria for at least one anxiety disorder (Wijnhoven, 2018).

Discussion

- More than 50,000 adults in Ontario have [ASD] (Autism Ontario, 2002).
- Availability of services depends on a family's financial circumstance, and their geographic location.
- Elevating the general understanding of neurotypical individuals, especially frontline and public sector workers

Discussion – Lack of Programming and Services

- 1 in 68 people are diagnosed with ASD* (Centre for Disease Control, 2014)
- "[T]his prevalence rate highlights the need to focus on efforts that promote quality of life [. . .] leisure, is important to achieving a high quality of life" (Garcia-Villamisar, Dattilo & Muela, 2017).
- "[A]dolescents low in in-person social interaction and high in social media use reported the highest levels of depressive symptoms, suggesting this group is the most in need of intervention" (Twenge et al., 2017).
- <http://journals.sagepub.com/doi/full/10.1177/2167702617723376>

AVAILABLE SERVICES

Autism Junction, ConnectAbility.ca, Personal Recommendations, Developmental Services Ontario

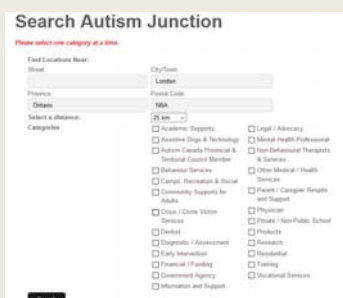
Autism Ontario: ConnectAbility.ca & mycommunityhub.ca

Partner Agencies

- Christian Horizons
- Community Living Toronto
- Corbrook
- Kerry's Place Autism Services
- Meta Centre
- Reena
- Vita Community Living Services
- Aptus
- Bob Rumball
- Holland Bloorview
- L'Arche Toronto
- Montage Support Services
- Geneva Centre for Autism
- KW Habilitation
- Community Living Essex County
- Springboard
- Partners for Planning
- Brantwood Community Services

Autism Junction

- No results for **'Crisis/Crime Victims Services'**
- No results for **'Community Supports for Adults'; 'Training'; or 'Vocational Services'**
- One result for **'Information and Support'** – the London Autistics Standing Together



Elsbeth Dodman



- LEADS
- Accommodation Training and Networking (ATN)
- Hutton House
- We Have Something to Say (WHSTS)
- Grassroots Initiatives

Developmental Services Ontario

- Alice Saddy Association
- Community Living London
- Anago
- Family Services Thames Valley
- Goodwill Industries
- L'Arche London
- Participation House
- Salvation Army
- Victorian Order of Nurses



“Acting my Way Through Autism” by Jake Anthony

- Struggled to communicate and connect with other people.
- Acting gave Anthony greater awareness of other people.
- Emphasis on the 'take-listen-react' of conversations.
- <https://vimeo.com/229801615>



RECOMMENDATIONS

ACCESS Program



Retrieved from:
<https://sites.google.com/a/ycdsb.ca/sbaspece/d/social-communication-program>

- “Acquiring Career, Coping Executive Control, Social Skills”
- 19 weekly discussion sessions on important topics
- Parallel programming for parents/ social coaches
- <https://scholarship.org/uc/item/54r9m1f0>

Make Public Spaces More Autism-Friendly

- Channel-Port aux Basques, Newfoundland
- Accommodations in hotels
- Training for frontline staff



Retrieved from <https://celebratecanada.wordpress.com/2009/05/22/day-233-of-a-365-day-portrait-of-canada-channel-port-aux-basques-newfoundland/>

CONCLUSION

Public Consultation Meeting, Closing Remarks

Inside Out for Autism



References

- (2013). Developmental Services. Anago. Retrieved from <http://www.anago.on.ca/developmental-services/>
- (2016). We have something to say. Provincial Advocate for Children & Youth. Retrieved from <https://www.provinciadvocate.on.ca/initiatives/we-have-something-to-say/resources/we-have-something-to-say-report-en.pdf>
- (2018). Autism agencies: Violent crimes not associated with autism. Retrieved from <http://www.autismontario.com/Client/ASD/AD.nsf/object/Autism+and+Violence+Media+Release+-+2018-04-27+FBVWU/5file/Autism+and+Violence+Media+Releases+-+2018-04-27+FBVWU.pdf>
- (2018). Who we are. Community Living London. Retrieved from <https://www.cll.on.ca/who-we-are/>
- ATRA. (2018). About recreational therapy. Retrieved from <http://www.atra-online.com/>
- Autism Canada. (2017). Homepage. Retrieved from <http://www.citationmachine.net/items/new>
- Autism Ontario. (2007). Forgotten: Ontario adults with autism and adults with Aspergers. Retrieved from [http://www.autismontario.com/client/asvo/ao.nsf/0/cf83000373c4fd4f852976050020344E/\\$FILE/FORGOTTEN_Executive_Summary_-_Recommendations.pdf](http://www.autismontario.com/client/asvo/ao.nsf/0/cf83000373c4fd4f852976050020344E/$FILE/FORGOTTEN_Executive_Summary_-_Recommendations.pdf)
- Bargiela, S., Steward, R. and Mandy, W. (2016). The experiences of late-diagnosed women with autism spectrum conditions: An investigation of the female autism phenotype. *Journal of Autism and Developmental Disorders*, (46), 3281-3294.
- Chatterjee, Rihit. (2018). Americans are a lonely lot, and young people bear the heaviest burden. NPR, online. Retrieved from <https://www.npr.org/sections/health-shots/2018/05/04/606588504/americans-are-a-lonely-lot-and-young-people-bear-the-heaviest-burden>
- CTVNews.ca Staff. (2018). What's an 'incel'? Unpacking the disturbing Facebook post linked to Toronto van attack. CTV News, online. Retrieved from <https://www.ctvnews.ca/pameter/what-is-an-incel-unpacking-the-disturbing-facebook-post-linked-to-toronto-van-attack-1.3900924>
- Garcia-Villanar, G., Dattilo, J. and Muela, C. (2017). Effects of therapeutic recreation on adults with ASD and ID: A preliminary randomized control trial. *Journal of Intellectual Disability Research*, 16(4), 325-340.

- Hazelwood, J. (2018). Why a London comic book store has hired employees with autism. CBC News. Retrieved from <http://www.cbc.ca/news/canada/london/heroes-comics-london-autism-1.4673038>
- Hoover, D. and Kaufman, J. (2018). Adverse childhood experiences in children with autism spectrum disorder. *Neurodevelopmental disorders*, 31(2), 128-132.
- Hyman, S. (2013). New DSM-5 includes changes to autism criteria. AAP News. Retrieved from www.aapnews.org.
- Oswald, T., Winder-Patel, B., et al. (2018). A pilot randomized controlled trial of the ACCESS program: A group intervention to improve social, adaptive functioning, stress coping, and self-determination outcomes in young adults with autism spectrum disorder. *Journal of Autism and Developmental Disorders*, (48), 1742-1760.
- Perreux, L. (2018). Suspect in Toronto van attack Alek Minassian described as socially awkward tech expert. *The Globe and Mail*, online. Retrieved from <https://www.theglobeandmail.com/canada/toronto/article-suspect-in-toronto-van-attack-described-as-socially-awkward-tech/>
- Primrose, T. (2018). CTV London: Autism. CTV News. <https://london.ctvnews.ca/video?clipId=1410018>
- Richa, S., Fahed, et al. (2014). Suicide in Autism Spectrum Disorders. *International Academy for Suicide Research*, 18(4), 327-339.
- Twenge, J., Joiner, T., et al. (2017). Increase in depressive symptoms, suicide-related outcomes, and suicide rates among U.S. adolescents after 2010 and linked to increased new media screen time. *Association for Psychological Science*, 6(1), 3-17.
- Wijnhoven, L. A. M. W., Creemers, D. H. M., Vermulst, A. A., & Granic, I. (2018). Prevalence and Risk Factors of Anxiety in a Clinical Dutch Sample of Children with an Autism Spectrum Disorder. *Frontiers in Psychiatry*, 9, 50. <http://doi.org/10.3389/fpsyg.2018.00050>



ACCESSIBILITY ADVISORY COMMITTEE



HOW TO PLAN ACCESSIBLE OUTDOOR EVENTS

Jon-Paul McGonigle, Division Manager, Parks and Recreation
Krista Broderick, Manager, Special Events and Community Rentals




Background

- **May 2017:** ACCAC requested that Civic Administration consider updates to the City of London Guide “How to Plan Accessible Outdoor Events”.
- **September 2017:** Council approved the separation of the former Special Events Policies and Procedures Manual into two documents
- Staff have reviewed the recommendations provided by ACCAC and incorporated them into the 2018 Special Events Administrative Procedures.

london.ca




Input incorporated

<p>Parking:</p> <ul style="list-style-type: none"> • Parking spaces are wide enough to accommodate accessible vans/buses and people who use mobility aids; • Parking spaces are as close to the entrance of the event as possible; and • Event personnel are familiar with the location of these parking spots. 	<p>Public Entrance:</p> <ul style="list-style-type: none"> • The presence of a level entrance that persons using wheelchairs or mobility aids can pass over; • An entrance that is wide enough for wheelchairs to pass through. (Greater than 32" recommended); ?? • In the event that the main entrance isn't accessible, there are signs directing people to the accessible entrance; and • If the main entrance has steps, it also has a railing.
---	---

london.ca




Input incorporated cont'd

<p>Emergencies:</p> <ul style="list-style-type: none"> • Auditory and visual alarms in the event of an emergency; • Your evacuation plan addresses the evacuation of persons with special needs; and • Staff are trained in these evacuation procedures. 	<p>Washrooms:</p> <ul style="list-style-type: none"> • Accessible outdoor portable washrooms inline with the size/scope of the event; • Washrooms located in accessible areas; • Washrooms locations are displayed using large clear letters, and understandable pictures or symbols are used on the signs identifying the accessible washroom(s); and • Event personnel know where the accessible washrooms are located.
--	--

london.ca



Input incorporated cont'd

Way-Finding Signage:

- Ensure all signs have large clear letters, use plain language, have good colour contrast, and can be read in all light conditions, in order to direct people to specific areas.


Lighting:

- All areas of travel and the display/booth areas must be adequately lit.

Entertainment Seating:

- The seating ensures an unobstructed view;
- A companion can sit beside the person with the disability; and
- Supports are available for the deaf, deafened, or hard of hearing.

london.ca



Input incorporated cont'd

Cables & Cords:

- Cover electrical cables and cords that cross aisles or pathways; and
- Cable covers should be no more than a half-inch (1.25 centimeters) thick so that they do not become a tripping hazard and so wheelchairs can traverse across them.

Food:

- Event personnel are available to assist participants in obtaining food and beverages;
- Part of the food counter is lowered to allow persons with mobility aids to access it easily (34 inches is recommended); and
- There is a clear path between tables for a mobility aid user to maneuver. (42 inches is recommended).

london.ca



Input incorporated cont'd


Tickets:

- The queuing (line-up) area is accessible (and maneuverable) for mobility aid users;
- There is adequate colour contrast between barriers;
- Tickets, where relevant for accessible seating areas, can be ordered in advance of the event by phone.

Rest Area/Quiet Space:

- Provide a designated quiet space for rest, especially if your event attracts large crowds and is longer than a couple of hours.

london.ca



Thank You

Questions?

london.ca