

# SOUTHDALE ROAD WEST Environmental Assessment Study

PUBLIC INFORMATION CENTRE 2  
May 31, 2018

DILLON  
CONSULTING



London  
CANADA

# NATURAL HERITAGE FEATURES



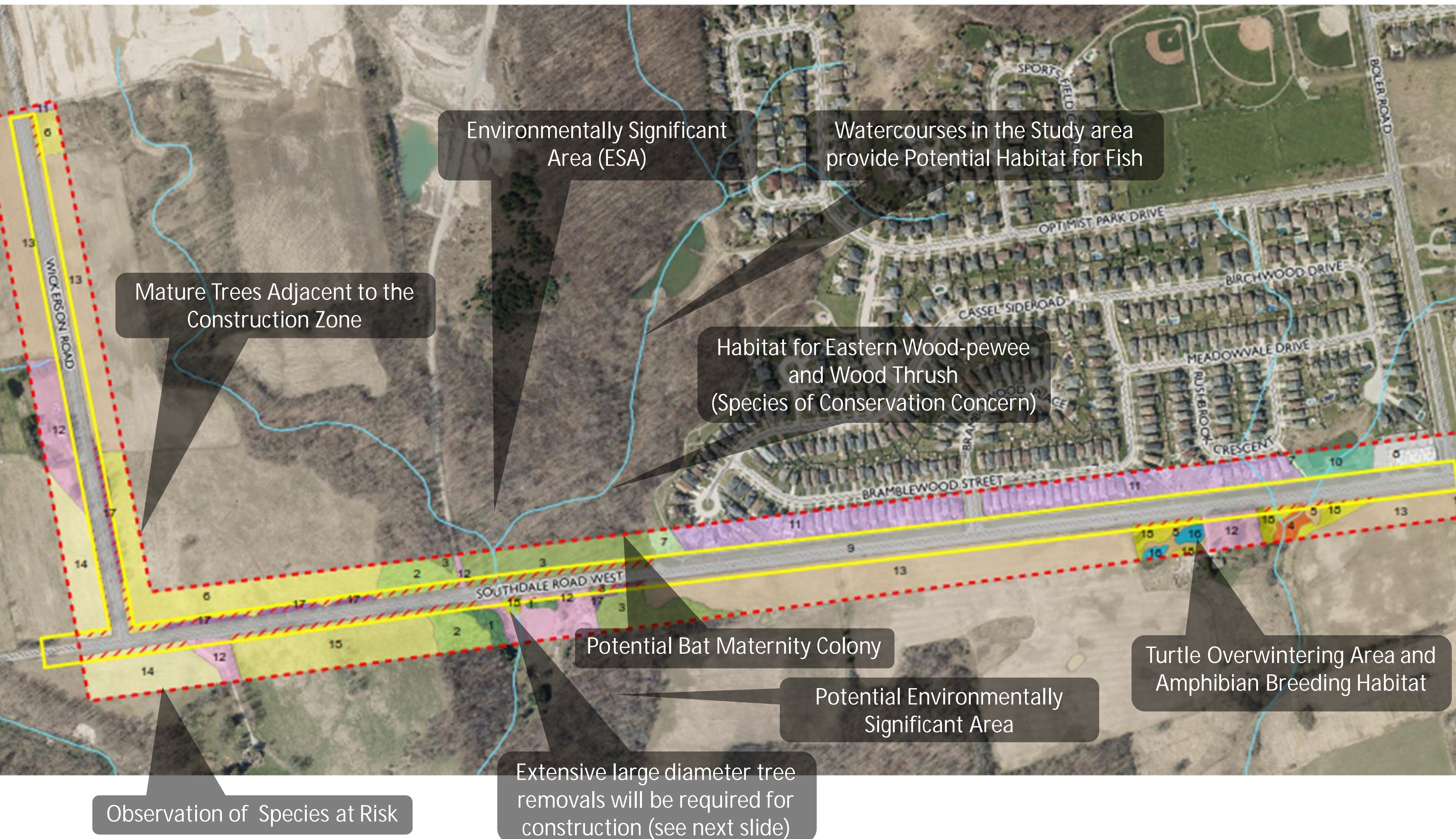
An Environmental Impact Study was completed to understand natural heritage features in the Study Area, including existing aquatic, terrestrial and wildlife conditions.

Natural Heritage features outside of the impacted areas will be mitigated. Strategies for mitigating these impacts are outlined in the next slide.

 Impacted Areas

## LEGEND

-  1. Naturalized Coniferous Plantation
-  2. Dry-Fresh Sugar Maple-Oak Deciduous Forest
-  3. Dry Fresh Sugar Maple- Oak Deciduous Forest
-  4. Common Reed Graminoid Mineral Meadow Marsh
-  5. Cattail Graminoid Mineral Meadow Marsh
-  6. Dry-Fresh Mixed Meadow
-  7. Greenlands
-  8. Business Sector
-  9. Transportation
-  10. Sewage and Water Treatment
-  11. Single Family Residential
-  12. Rural Property
-  13. Annual Row Crops
-  14. Perennial Cover Crop
-  15. Open Pasture
-  16. Open Aquatic
-  17. Fencerow
-  18. Fresh-Moist Mixed Meadow



Observation of Species at Risk

Extensive large diameter tree removals will be required for construction (see next slide)

# MITIGATING IMPACTS TO NATURAL HERITAGE FEATURES

The following mitigation measures are recommended to reduce impacts to natural heritage features in the construction zone:

<p>During Detailed Design</p>	<ul style="list-style-type: none"> <li>• Create a Tree Preservation Plan, including tree protection fencing and removal timing guidelines and compensation planting plans including compensation ratio's to be used for planting</li> <li>• Develop Invasive Species Management Plan to target invasive flora</li> <li>• Develop Edge Management and Compensation Planting Plan, including compensation ratio</li> <li>• Develop Erosion and Sediment Control Plan</li> <li>• Develop Wildlife Impact Mitigation Plan</li> <li>• Investigate low impact development techniques</li> </ul>
<p>Prior to Construction</p>	<ul style="list-style-type: none"> <li>• Vegetation removals should take place outside of active season for birds and bats</li> <li>• Invasive species removal</li> </ul>
<p>During Construction</p>	<ul style="list-style-type: none"> <li>• Minimize area of disturbance and avoid sensitive vegetation and in-water work</li> <li>• Necessary in-water work will be completed timing windows for fish</li> <li>• Sediment and erosion control measures</li> <li>• Incorporate wildlife impact mitigation measures</li> <li>• Develop an environmental monitoring plan, including monitoring in areas where impacts to wildlife are possible and erosion and sediment control measures are undertaken</li> <li>• Contractors should receive SAR training</li> </ul>
<p>Following Construction</p>	<ul style="list-style-type: none"> <li>• Planting of new trees to compensate for tree removals required for construction. Trees should be monitored to ensure health and survival</li> <li>• Develop monitoring plan</li> </ul>

