



Southdale Road West Environmental Assessment Study



Notice of Public Information Centre #2

The City of London is undertaking a Class Environmental Assessment (EA) study for improvements to Southdale Road West (between Byron Hills Drive and Wickerson Road) and Wickerson Road (from Southdale Road West to 650m north of Southdale Road West). The study has developed and evaluated various design options for improving these roads, as well as providing for other required infrastructure improvements.

Following Public Information Center (PIC) 1 held on March 3, 2017, alternative designs for road and related infrastructure improvements were evaluated and a preferred alternative solution chosen. A second PIC will be held on **May 31, 2018**, to present the preferred design option. The PIC display materials will be available for review on the City of London website, starting on **June 1, 2018**.

Public Information Centre #2	
Date:	May 31, 2018
Time:	4:00 p.m. – 7:00 p.m.
Location:	Byron United Church 420 Boler Road
Format:	Informal Drop-in Session

Information collected for the study will be used in accordance with *the Municipal Freedom of Information and Protection of Privacy Act*. Except for personal information, including your name, address and property location, all comments received throughout the study will become part of the public record and included in project documentation.

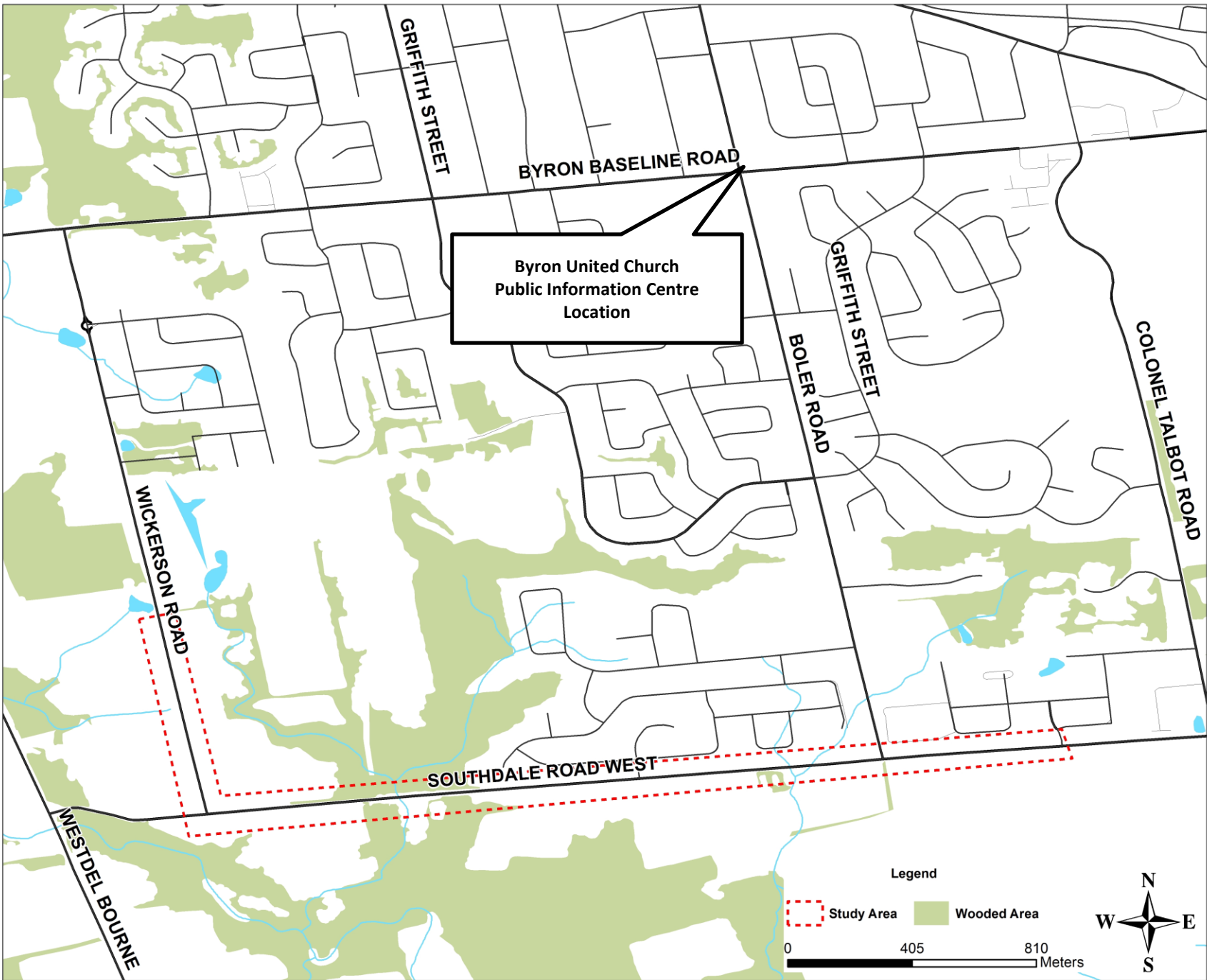
For More Information: For more information, to provide comments or to be added to the mailing list, please visit www.london.ca or contact:

Brian Huston, P.Eng.
Project Manager
Dillon Consulting Limited
130 Dufferin Avenue, Suite 1400
London, Ontario, N6A 5R2

Tel: 519-438-6192 Ext. 1227
Fax: 519-672-8209
Email: bhuston@dillon.ca

Ted Koza, P.Eng.
Transportation Planning and Design
Corporation of the City of London
300 Dufferin Avenue, P.O. Box 5035
London, Ontario, N6A 4L9

Tel: 519-661-2489 Ext. 5806
Fax: 519-661-4889
Email: tkoza@london.ca



Byron United Church
Public Information Centre
Location

Legend

