

PROJECT OVERVIEW

- Environmental Assessment (EA) for Southdale Road West and Wickerson Road corridors between Wickerson Gate and Byronhills Drive
- The EA will identify the requirements for improving the roads to a 2-lane standard, with the inclusion of Active Transportation



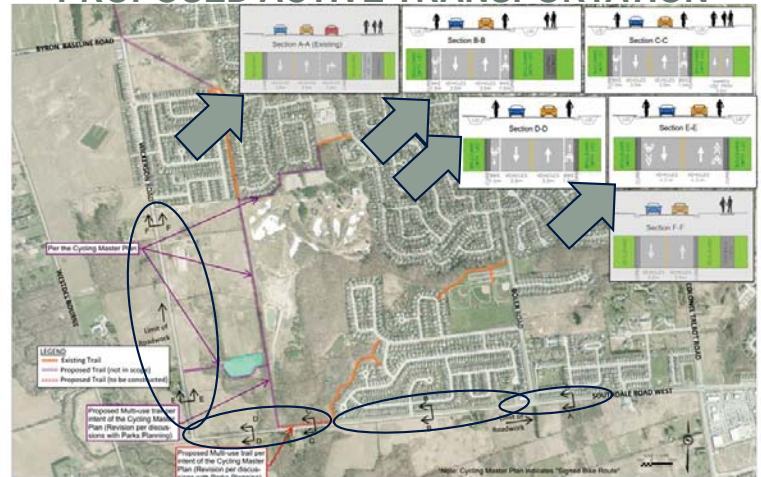
EXISTING CONDITIONS



CURRENT STATUS

- The second Public Information Centre was held in May 2018 where opportunities for active transportation, as identified in the Cycling Master Plan, were presented to the public (presentation material available on the City website)
- The proposed active transportation strategy will include:
 - Upgrade to on-street bike lanes on Southdale Road (Master Plan showed signed bike routes) and signed bike route on Wickerson Road
 - Partial section of multi-use pathway on north side of Southdale Road West, for future trail connectivity.

PROPOSED ACTIVE TRANSPORTATION



NEXT STEPS

- Respond and update design based on input from the public and CAC committee
- Complete Environmental Study Report (ESR) – Summer 2018
 - Finalize EA document
 - Present EA document to council for endorsement
 - 30-day public and agency review period
- Detailed Design Phase – Anticipated to be 2018/2019
- Construction Phase – Anticipated to begin 2020