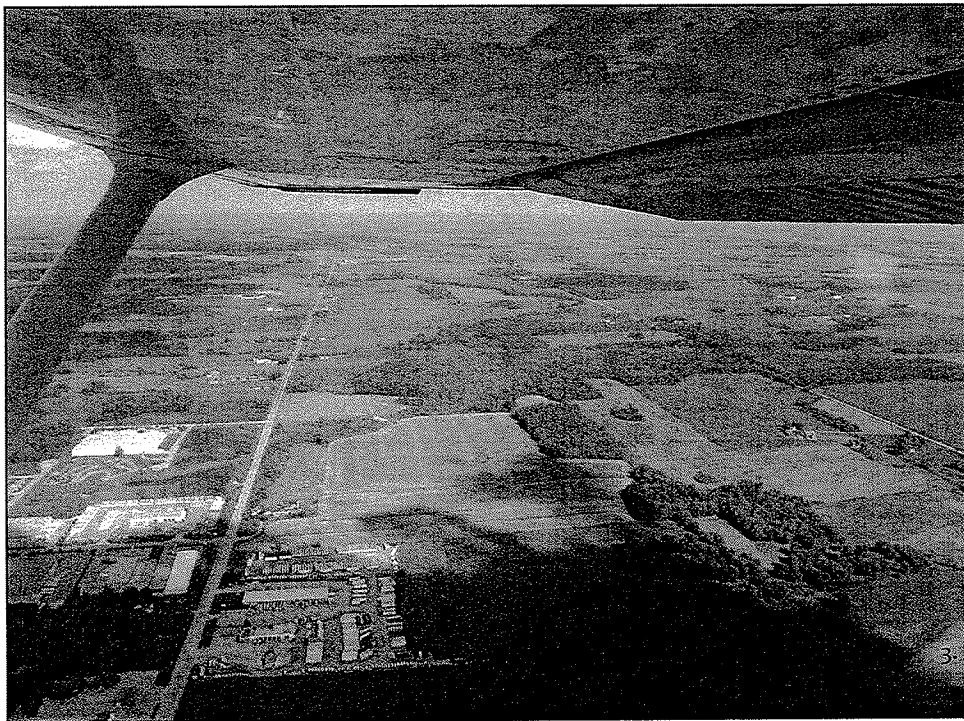


Restoring the Westminster Wetlands PSW

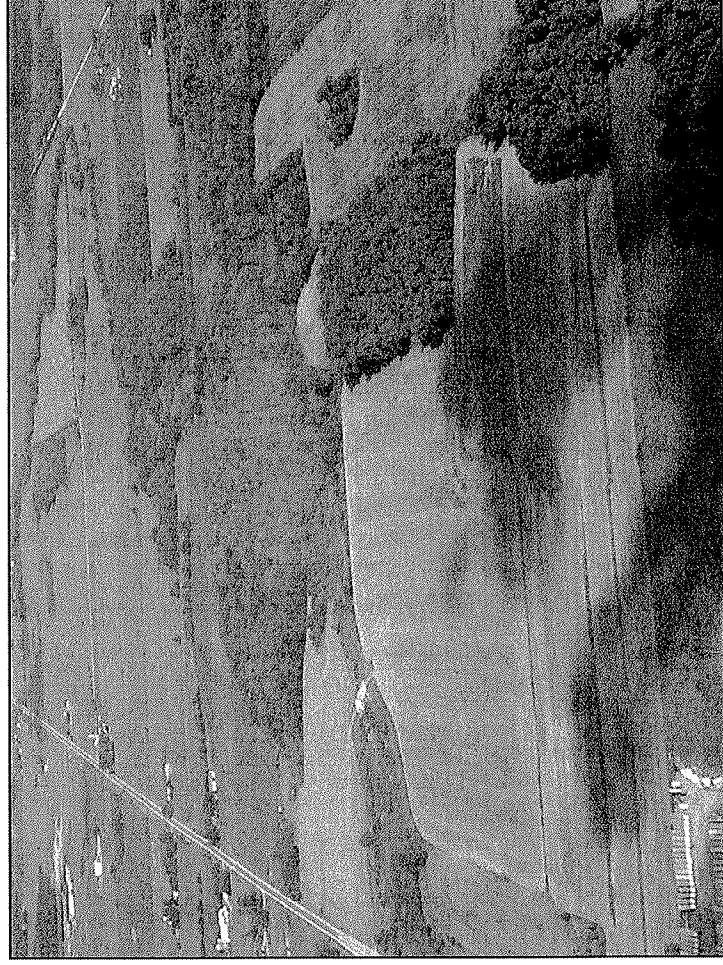
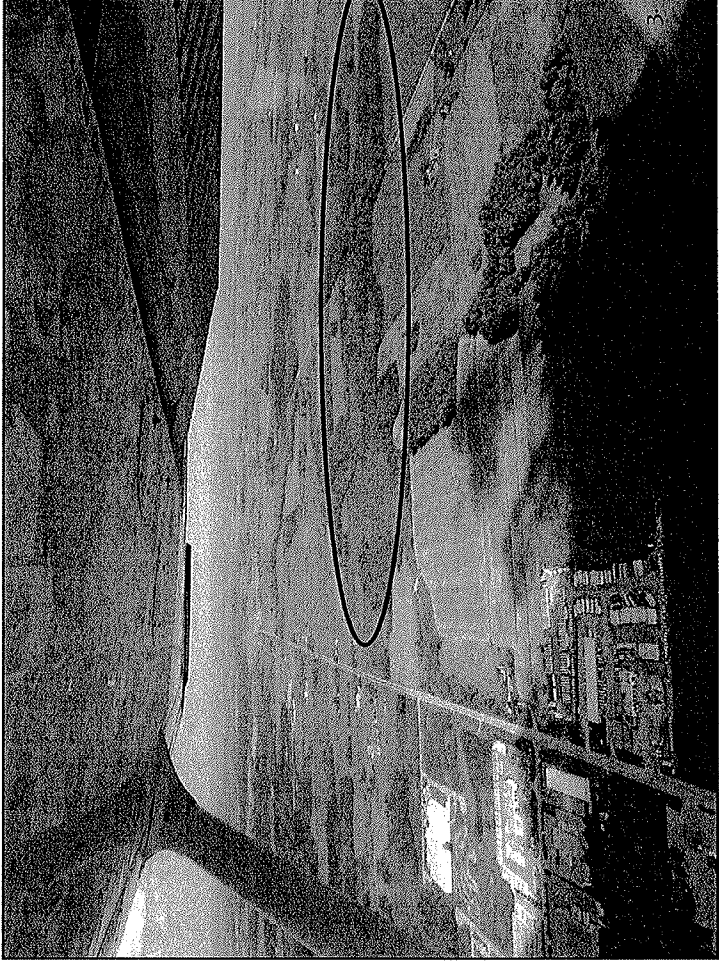


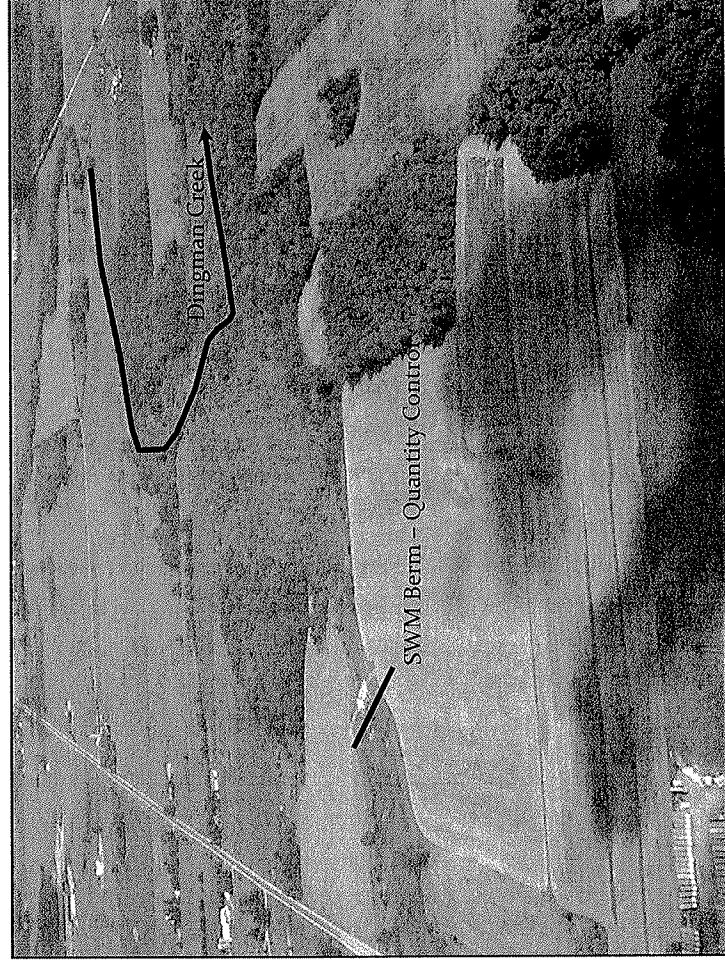
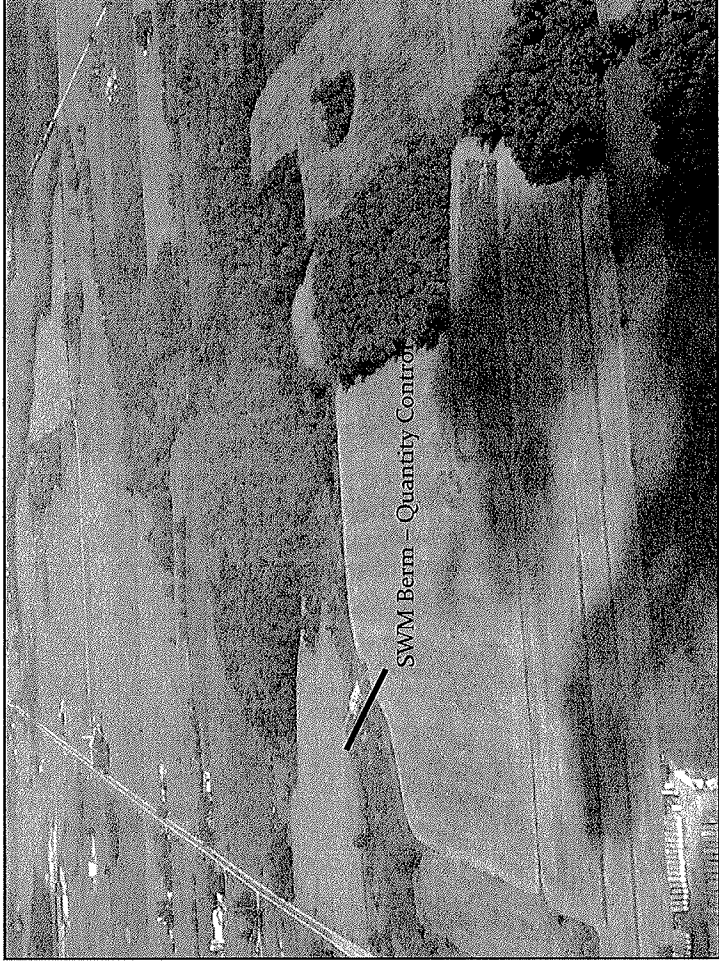
1.

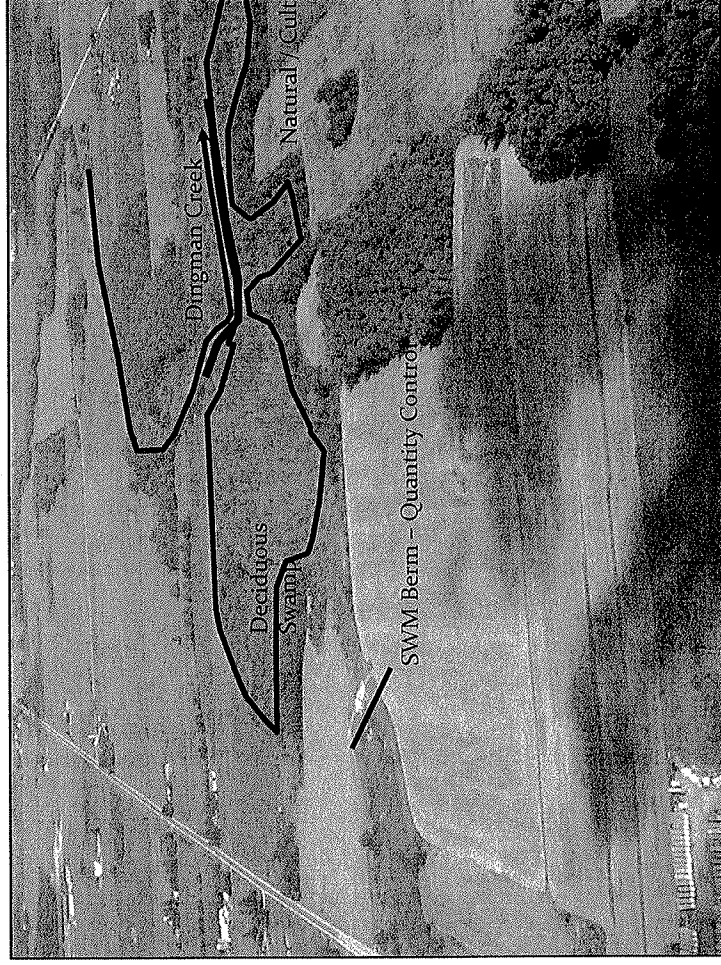
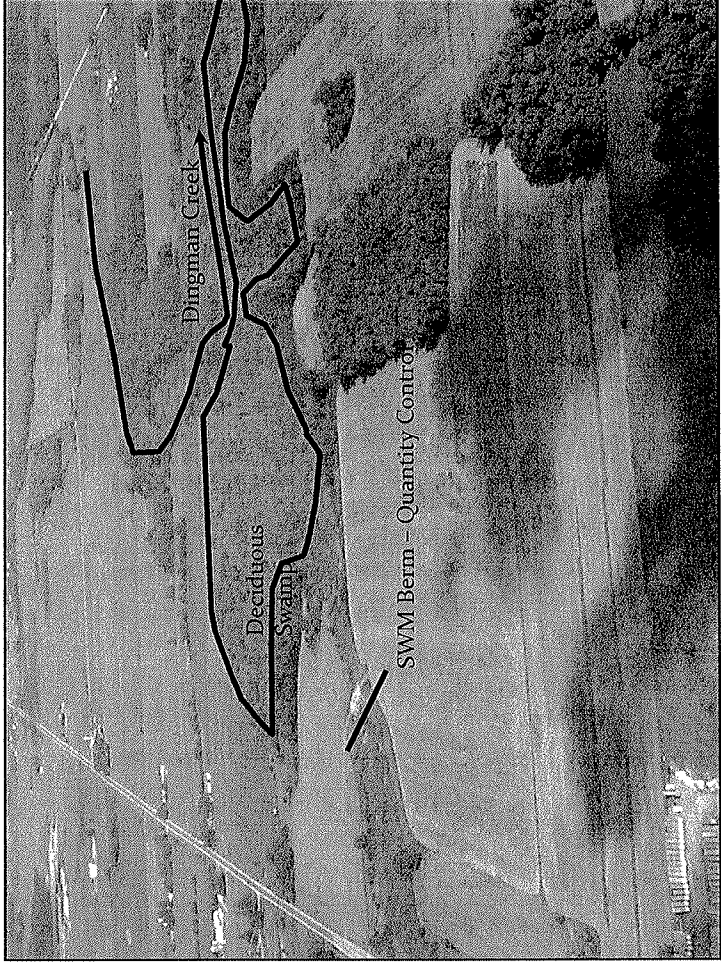


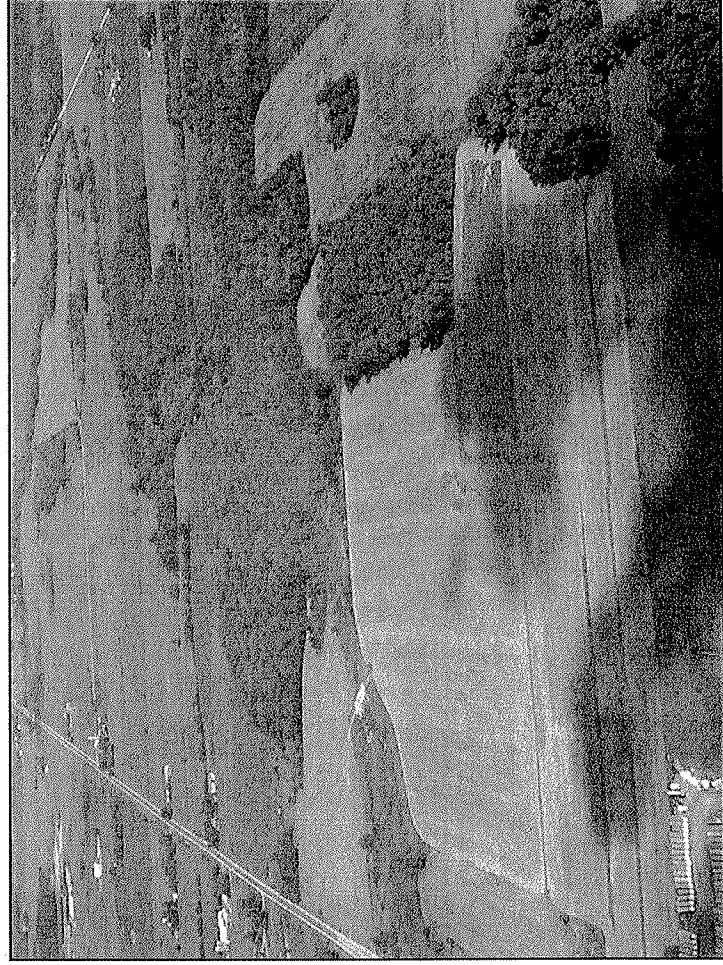
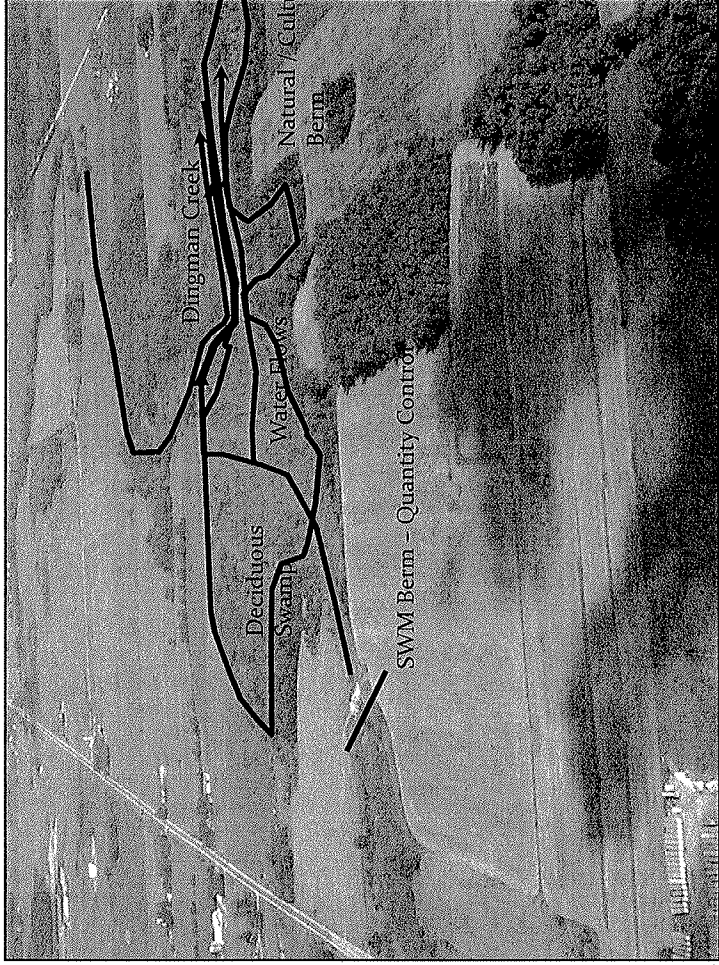
3.

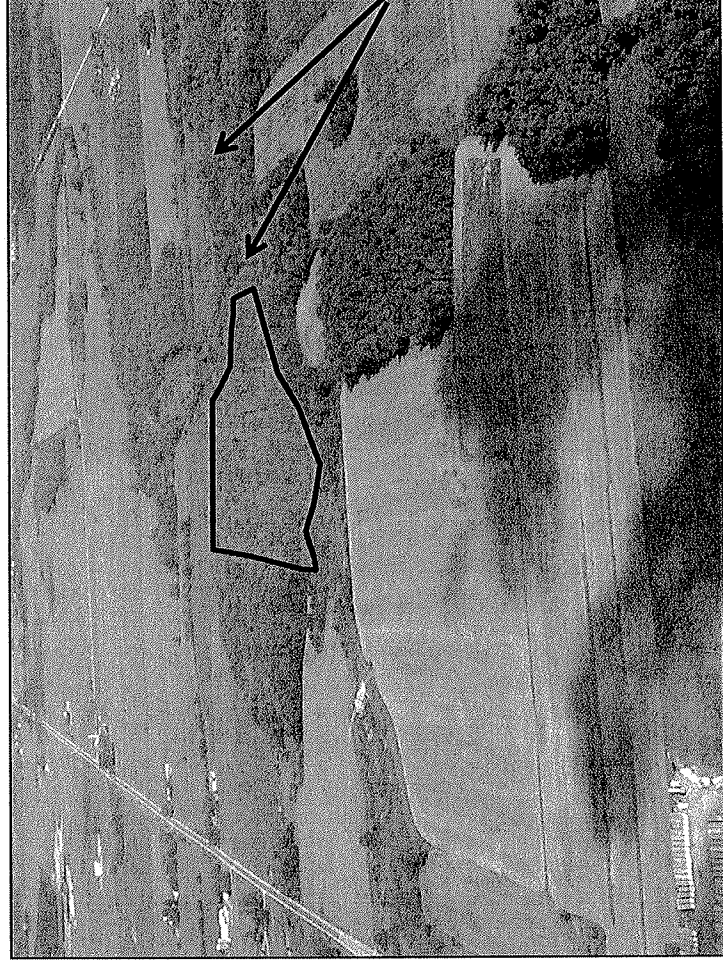
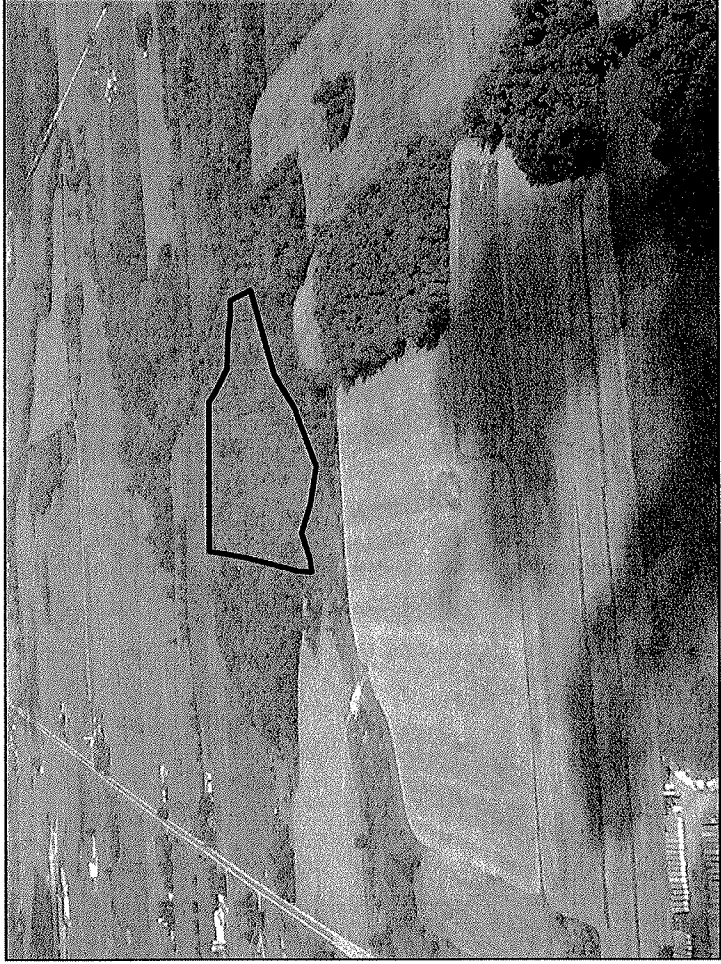
2012-08-22



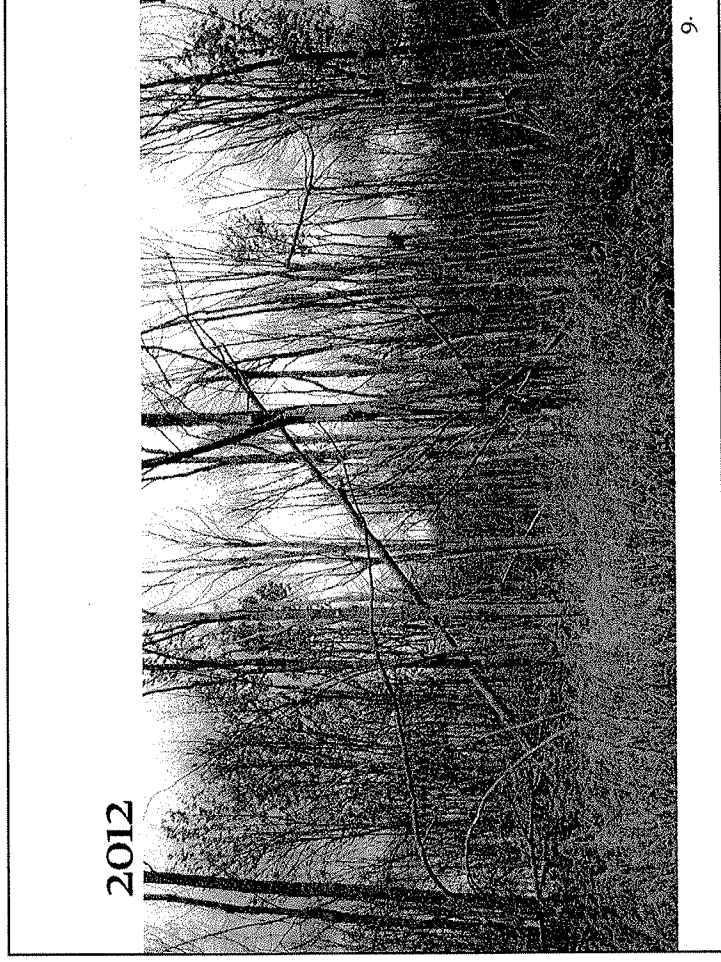
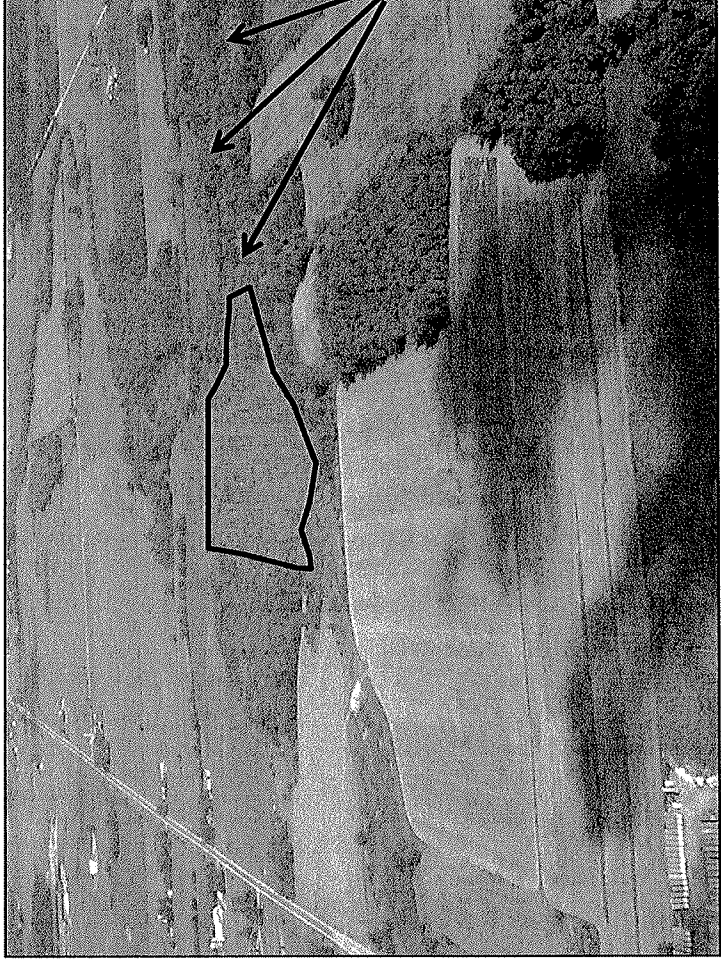








2012-08-22

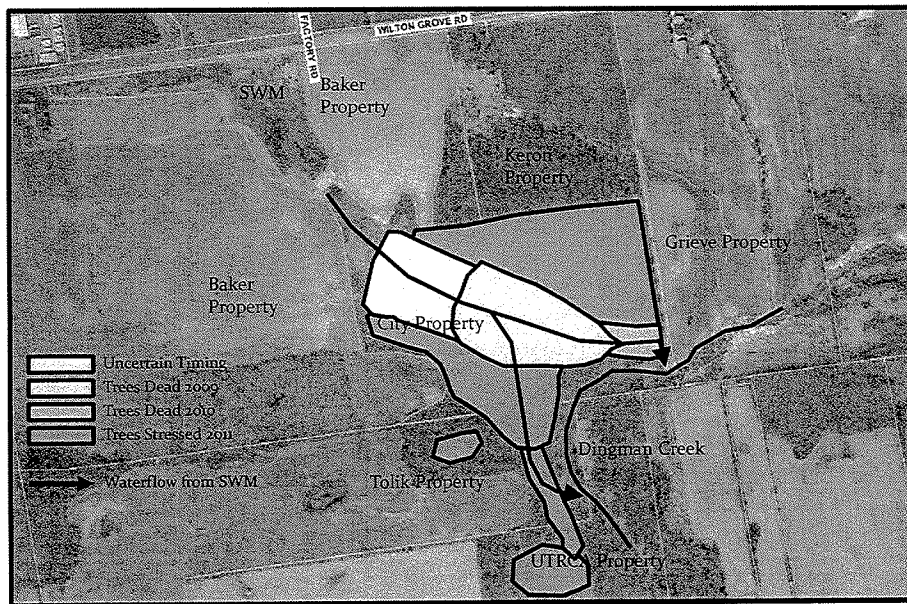


9.

2012



Damage Sequence - 2011 has not recovered

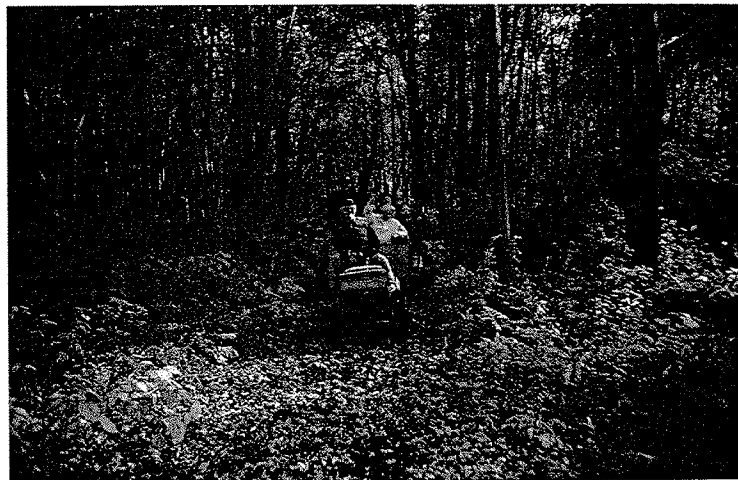


Thanksgiving 2011



8.

Thanksgiving 2005



7.

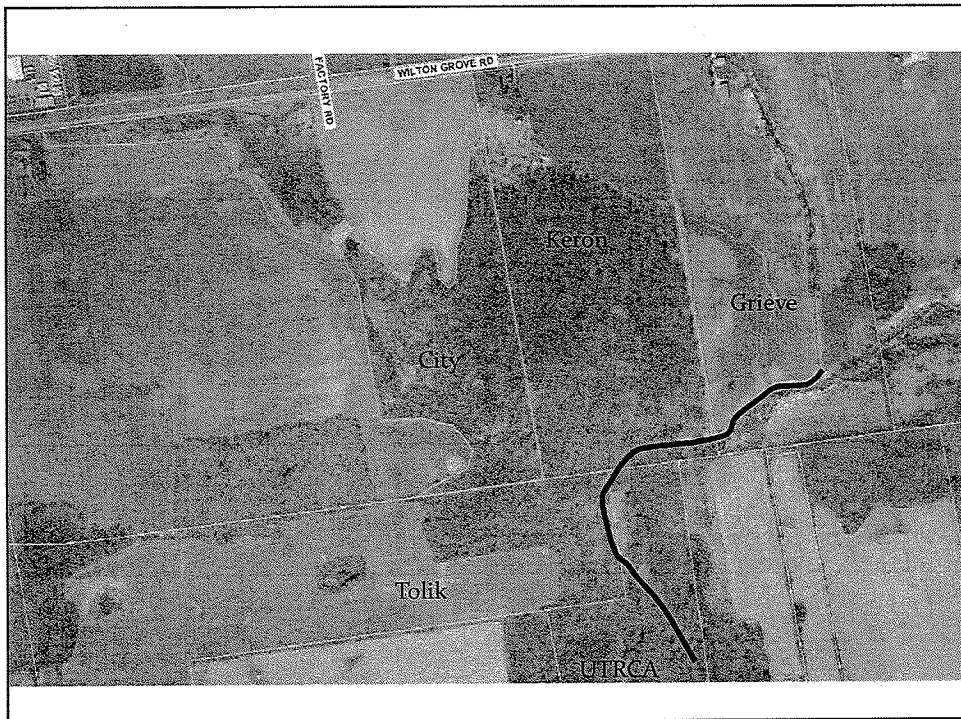
2011 Damaged Area Today

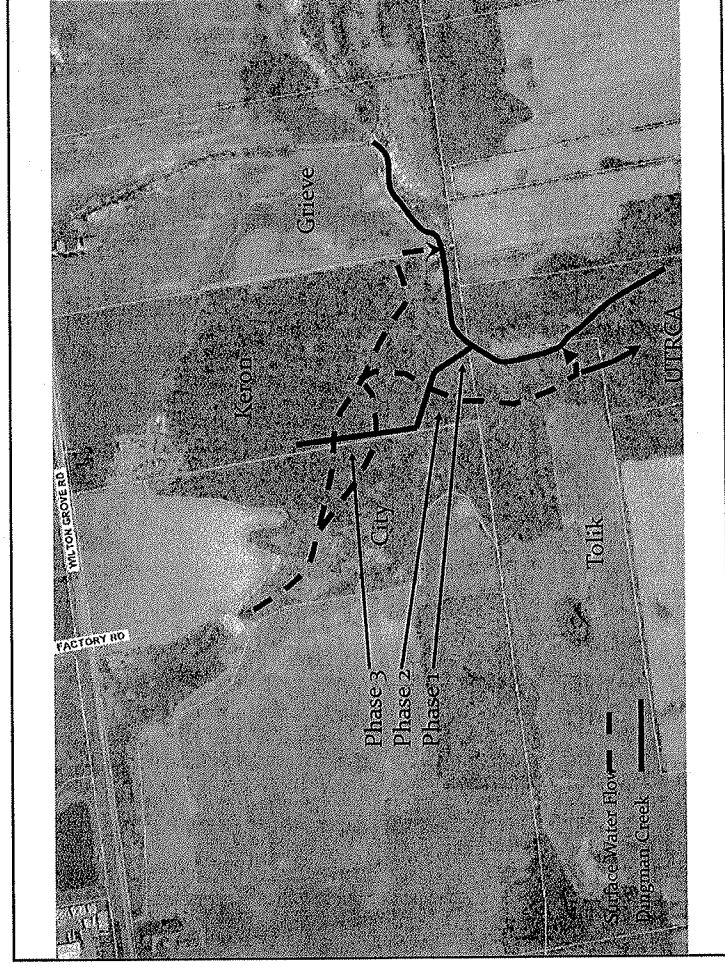
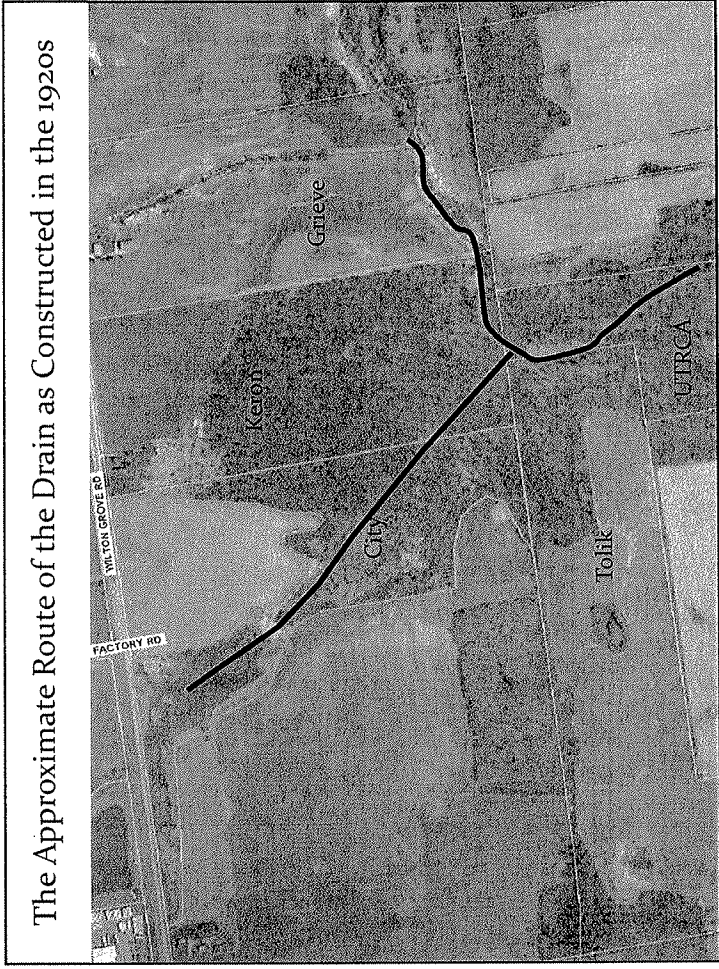


April 2012: Opening the Drain



Pre Drain





City Property from the East - Today



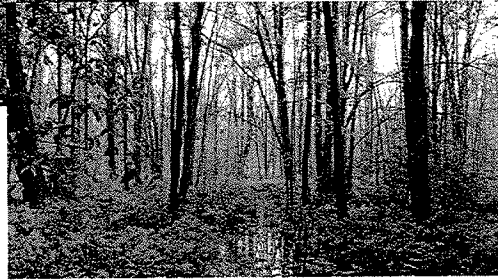
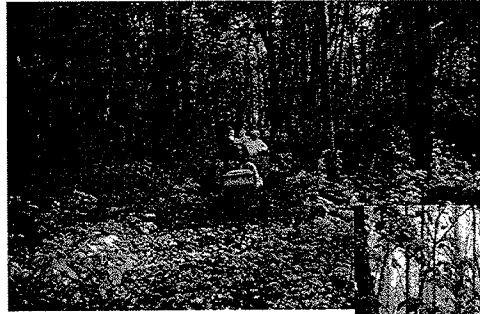
Replanting Experiment Proposal

- Council expressed an interest to restore the PSW
- Suggest experimental planting this fall
- Reforest London, the City, UTRCA and our family
- 10 normal sized trees which RFL would plant
- Also move some seedlings within the swamp

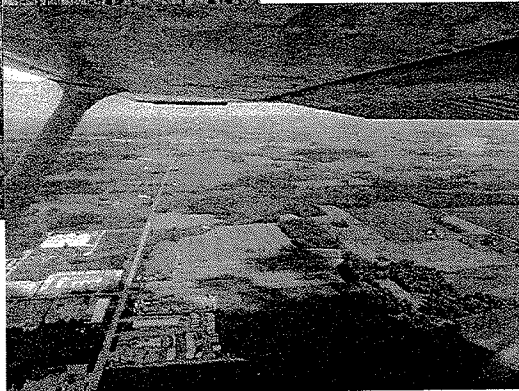
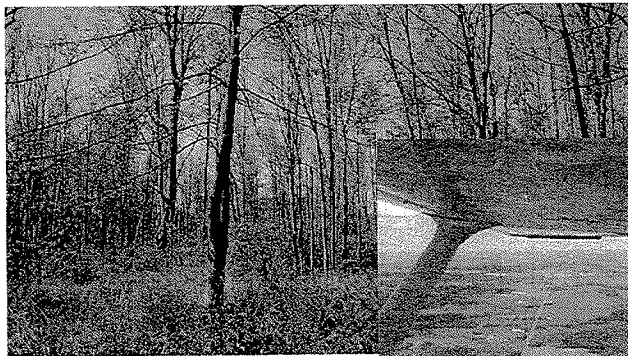
- Are you interested in participating???



Thanks for Listening



Comments to the Engineering Submission



Comments to the Engineering Submission

- I would support the research being done as part of the Dingman Creek Subwatershed Study
- I will provide commentary to that process
- But one point I would like to make . . .



One Factual Error

TO:	CHAIR AND MEMBERS PLANNING AND ENVIRONMENT COMMITTEE MEETING ON FEBRUARY 27, 2012
FROM:	JOHN BRAAM, P.ENG. ACTING EXECUTIVE DIRECTOR, PLANNING, ENVIRONMENTAL & ENGINEERING SERVICES & CITY ENGINEER
SUBJECT:	FOREST CITY INDUSTRIAL STORMWATER MANAGEMENT FACILITY AND WESTMINISTER WETLAND COMPLEX

On page 2 towards the bottom

SWM Unit staff informed Mr. Keron on numerous site visits and by letter that, in accordance with the City practices and requirements, the City is not responsible to maintain private drains and it is the responsibility of the private landowners to ensure that they are functioning adequately.

2012-08-22

