



2018 Municipal Parking Lot Upgrades (Lots 3W, 3E & 4)




Presented to the Accessibility Advisory Committee
May 24, 2018




Background

- Annual parking lot upgrade program
- Program identifies rehabilitation of 11 proposed municipal parking lots over 4 years
- In 2018 transportation is working on parking lots 3W, 3E & 4
- Limited amount of work in each parking lot




Scope of Work



2018 Parking Lots:

- 3W Piccadilly West of Richmond
- 3E Piccadilly East of Richmond
- 4 Marshall Street



Scope of Work

- Resurfacing parking lot asphalt (50mm)
- Replacing damaged curbs
- Replacing sidewalks/walkways
- Installing new signage
- Painting parking space lines to meet current standards



Applicable Standards

Accessible Parking Spaces:

- Accessibility for Ontarians with Disabilities Act (AODA)
- Ontario Traffic Manual (OTM)
- Facility Accessibility Design Standards (FADS)
- Site Plan Control By-law



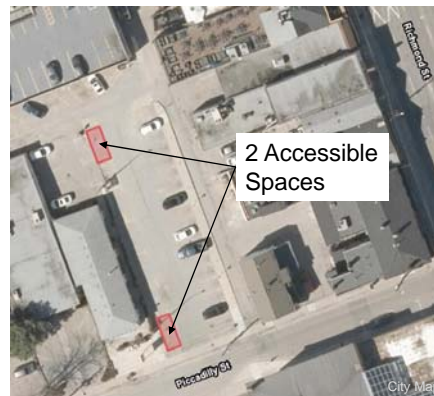
Lot 3W Piccadilly West of Richmond

Existing:

- 18 standard parking spaces
- 6 parallel parking spaces

Accessibility

- 2 parallel spaces are accessible
- Only 1 access aisle





Lot 3W Piccadilly West of Richmond

After Construction:

- Approx. 16 standard parking spaces
- Approx. 6 parallel parking spaces

Accessibility

- 2 spaces to be accessible (per AODA):
 - 1 Type A parking space with aisle
 - 1 Type B parking space with aisle



Lot 3E Piccadilly East of Richmond

Existing:

- 35 parking spaces

Accessibility

- 2 accessible parking spaces
- No access aisles
- Walkway and parking pay station have physical barriers to access





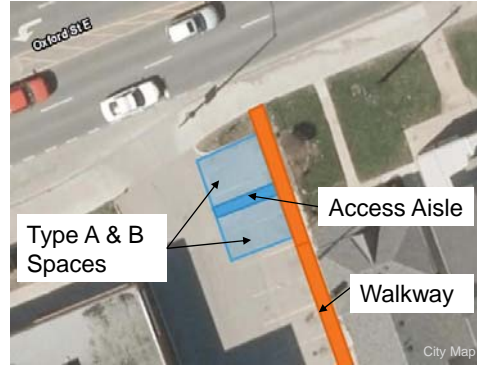
Lot 3E Piccadilly East of Richmond

After Construction:

- Approximately 34 parking spaces

Accessibility

- 2 spaces to be accessible (per AODA)
- New walkway with 1.8m width



Lot 4 Marshall Street

Existing:

- 113 parking spaces

Accessibility:

- 4 accessible parking spaces
- No access aisles





Lot 4 Marshall Street

After Construction:

- Approx. 112 parking spaces

Accessibility

- 5 spaces to be accessible (per AODA):
 - 3 Type A spaces with aisles
 - 2 Type B spaces with aisles

