

TO:	CHAIR AND MEMBERS CIVIC WORKS COMMITTEE MEETING ON MAY 15, 2018
FROM:	KELLY SCHERR, P.ENG., MBA, FEC MANAGING DIRECTOR, ENVIRONMENTAL & ENGINEERING SERVICES AND CITY ENGINEER
SUBJECT:	ADELAIDE STREET NORTH ENVIRONMENTAL ASSESSEMENT FANSHAWE PARK ROAD EAST TO SUNNINGDALE ROAD EAST APPOINTMENT OF CONSULTING ENGINEER

RECOMMENDATION

That, on the recommendation of the Managing Director, Environmental & Engineering Services and City Engineer, the following actions **BE TAKEN** with respect to the Adelaide Street North Environmental Assessment:

- (a) Parsons Inc., **BE APPOINTED** Consulting Engineers for the project in the amount of \$319,462.00 (excluding HST), in accordance with Section 15.2(e) of the Procurement of Goods and Services Policy;
- (b) the financing for this project **BE APPROVED** in accordance with the Sources of Financing Report attached hereto as Appendix A;
- (c) the Civic Administration **BE AUTHORIZED** to undertake all the administrative acts that are necessary in connection with this project;
- (d) the approvals given herein **BE CONDITIONAL** upon the Corporation entering into a formal contract with the Consultant for the work; and,
- (e) the Mayor and City Clerk **BE AUTHORIZED** to execute any contract or other documents, if required, to give effect to these recommendations.

PREVIOUS REPORTS PERTINENT TO THIS MATTER
--

- Civic Works Committee – June 19, 2012 – London 2030 Transportation Master Plan
- Strategic Priorities & Policy Committee – June 23, 2014 - Approval of 2014 Development Charges By-law and DC Background Study

2015-19 STRATEGIC PLAN

The following report supports the Strategic Plan through the strategic focus area of *Building a Sustainable City*. The proposed Adelaide Street North Widening project is part of a strategic program of road improvements to provide improved mobility, capacity, and safety for all road users.

BACKGROUND

Purpose

This report seeks the approval of the Municipal Council to retain an engineering consultant to undertake the environmental assessment (EA) for the widening of Adelaide Street North from two lanes to four lanes from Fanshawe Park Road East to Sunningdale Road East. The purpose of this EA is to satisfy the requirements of the Environmental Assessment Act by providing a comprehensive, environmentally sound planning process with public participation. The process will facilitate dialogue between parties with a number of different interests.

Context

The study area for this EA is the Adelaide Street North corridor from Fanshawe Park Road East to Sunningdale Road East. The surrounding land use is a mix of residential, commercial, and park land. Adelaide Street North accommodates between 11,000 and 20,000 vehicles per day within the corridor.

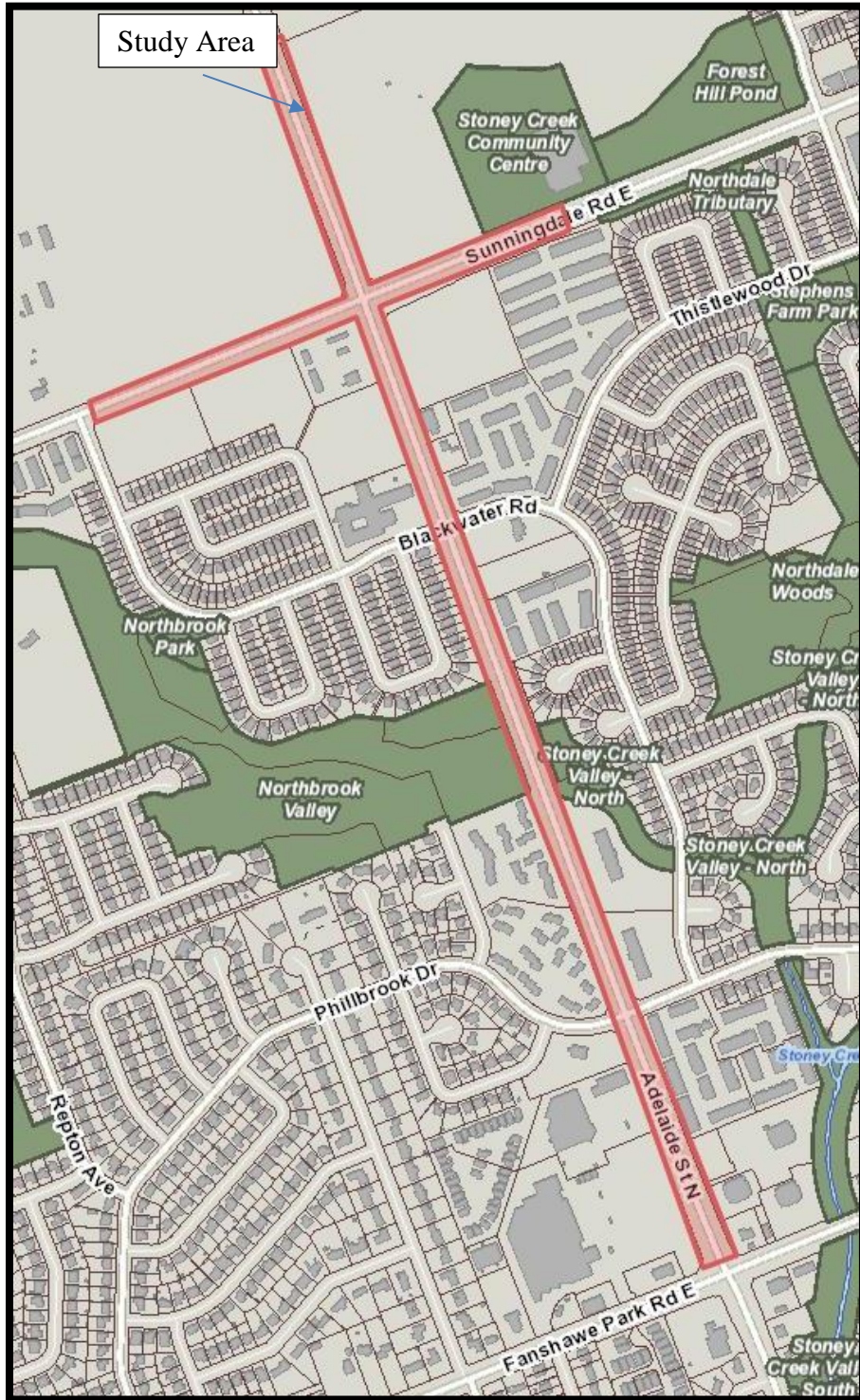
The London Plan identifies three distinct place types surrounding Adelaide Street North between Fanshawe Park Road East and Sunningdale Road East. The place types are: Neighborhoods, Shopping Area, and Green Space. Each of the place types have associated policies on the vision, role within the City Structure, use, intensity and form in order to inform the vision for future development along the corridor. The Adelaide Street North corridor, within this project scope, is classified as Civic Boulevard.

The EA must integrate technical considerations, public and stakeholder input, transportation engineering, structural engineering, land use planning, and urban design to develop a balanced and implementable solution. The City has identified a need for improvements along Adelaide Street North due to the increased traffic volumes and surrounding developments. The EA is required to proceed with the implementation strategy.

DISCUSSION

Project Description

The Adelaide Street North widening project was identified as a medium term priority in the 2030 Transportation Master Plan (TMP) and the 2014 Development Charges Background Study. Recommendation was made to widen Adelaide Street North from Fanshawe Park Road East to Sunningdale Road East from two lanes to four lanes. A map of the study area is displayed in the following illustration:



Environmental Assessment Study Area

The intent of this EA is to explore various geometric design alternatives and develop a functional plan for the preferred design. These alternatives will be evaluated using a range of criteria including impacts on the natural, social, cultural, and economic environments. The study corridor design should accommodate high volumes of vehicular traffic, be cycling and pedestrian supportive and provide safe access to the adjacent land uses.

The proposed EA will:

- Develop and evaluate design alternatives considering natural, social, cultural and economic environment considerations;
- Recommend the future improvements for the corridor and intersections to mitigate future deficiencies, accommodate increased traffic demand, and improve safety;
- Develop a functional and visually attractive design concept;

- Engage the public and stakeholders to allow public input and active involvement throughout the study process;
- Determine the appropriate right-of-way and property requirements;
- Coordinate underground service needs;
- Coordinate with ongoing EAs, projects, studies;
- Assess and document the ecological and natural features within the corridor and identify management needs; and,
- Document in a clear and transparent manner the process undertaken and provide formal documentation and presentations.

Issues of special interest in the project area include:

Adelaide Street North Culvert

Improvements are required to the Adelaide Street North culvert located approximately 700 m north of Fanshawe Park Road East. It is noted that the culvert often overtops the roadway at this location due to inefficiencies in flow conveyance. Elements to be investigated include: reconfiguration of the inlet, integration of the two outlet systems, downstream erosion control infrastructure, and incorporation of natural channel design elements as appropriate

Natural Environment

The Stoney Creek Valley is part of the City's Natural Heritage System and designated as Significant Valley Lands in the London Plan. This component requires a comprehensive review, field investigations and agency consultations to confirm current and accurate information pertaining to known features, including rare species and species at risk.

Cultural Heritage

Assessment for archaeological potential will identify areas where advanced assessment is required during detailed design. The areas of potential and recognized cultural heritage value or interest within and adjacent to the study area will be inventoried and evaluated. The study will provide recommendations to ensure the conservation of significant cultural heritage resources.

Utility Infrastructure

The corridor contains significant public and private utility infrastructure such as a 600 mm diameter concrete water main, Imperial Oil pipeline and other utilities that will require detailed considerations, and long term protection for future infrastructure needs. The EA will also consider servicing for surrounding developments.

Roundabout – Sunningdale Road East at Adelaide Street North

The 2013 Sunningdale Road ESR identified a roundabout as the preferred intersection improvement at Sunningdale Road East and Adelaide Street North. The approved roundabout will be reviewed in conjunction with the improvements to confirm any alignment issues related to Adelaide Street.

Consultant Selection

The consultant selection process has been undertaken in accordance with the Procurement of Goods and Services Policy. The procurement followed the two stage process with the first stage being an open, publicly advertised expression of interest/pre-qualification stage (REOI/RFQUAL). Subsequently a consultant shortlist comprising CH2M, IBI Group, and Parsons Inc. were asked to submit detailed proposals and work plans. All firms responded with written proposals including a summary of the project tasks, schedule, and costs. An evaluation committee reviewed the submissions for the project.

Based on the evaluation criteria and selection process identified in the request for proposal, the evaluation committee determined the proposal from Parsons Inc. provides the best overall value to the City.

Parsons Inc. has an experienced project team that exhibited a clear understanding of the project scope and requirements. Their experience on similar projects of this nature, combined with a project proposal that confirmed a thorough understanding of the goals and objectives, illustrated their expertise for this undertaking. The consultant project team is familiar with the challenges presented in this project having been involved in several past projects in the area and across London.

In accordance with Section 15.2 (e) of the Procurement of Goods and Services Policy, the civic administration is recommending Parson Inc. be appointed as the consulting engineer for the EA. The submission from Parsons Inc. includes a fee submission that indicates that the EA can be completed within the project funds available.

CONCLUSION

The Adelaide Street North EA will provide justification for the preferred design improvements to the existing road cross section. The preferred design will need to reflect both the existing and planned land use, urban form, and transportation contexts. The need for this environmental assessment has been identified as a result of the rising traffic volumes in the area.

Based on the technical evaluation of the proposals, it is recommended that Parsons Inc. be awarded the consulting assignment for the Adelaide Street North Widening Environmental Assessment. The consultant assignment is valued at an upset amount of \$319,462.00 (excluding HST).

Acknowledgements

This report was prepared with assistance from Maged Elmadhoon, M.Eng., P.Eng. Traffic and Transportation Engineer, Andrew Giesen, C.E.T., Senior Transportation Technologist, and Matt Davenport, Engineer in Training of the Transportation Planning & Design Division.

PREPARED BY:	REVIEWED AND CONCURRED BY:
DOUG MACRAE, P.ENG DIVISION MANAGER, TRANSPORTATION PLANNING & DESIGN	EDWARD SOLDI, P.ENG. DIRECTOR, ROADS AND TRANSPORTATION
RECOMMENDED BY:	
KELLY SCHERR, P.ENG., MBA, FEC MANAGING DIRECTOR, ENVIRONMENTAL AND ENGINEERING SERVICES & CITY ENGINEER	

Attach: Appendix A – Sources of Financing

c: D. Cowan, Parsons Inc., 1069 Wellington Road South, Suite 214, London
ON N6E 2H6