

# South West Community Centre Playground

Presentation to the Accessibility Advisory Committee,  
March 22, 2018

[london.ca](http://london.ca)



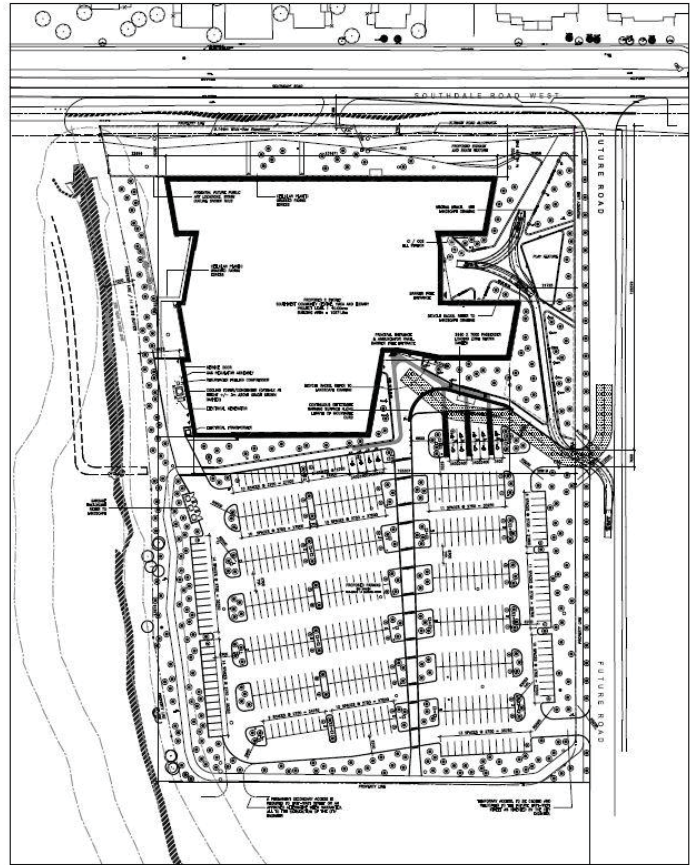
## South West Community Centre Location Map



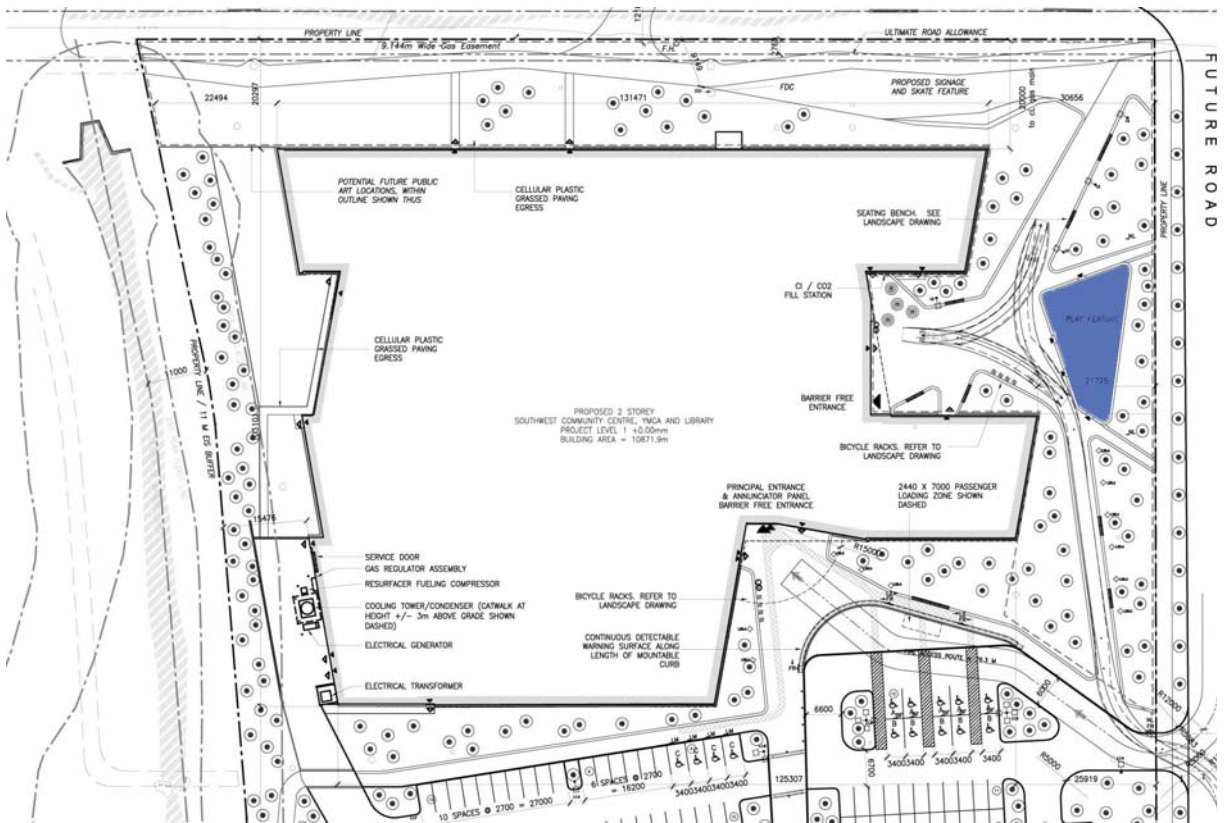
[london.ca](http://london.ca)



london.ca



01 SITE PLAN



london.ca

# Playground Accessibility

Two options are presented for this site.

✓ Both options meet AODA:

- Physical play
- Sensory play
- Firm and stable safety surfacing

✓ Both options have a rubber safety surfacing

✓ Both options have some motion play

✓ Both options have some collaborative play

✓ Both options have some independent play

✓ Both have partial ramp access leading to a play opportunity

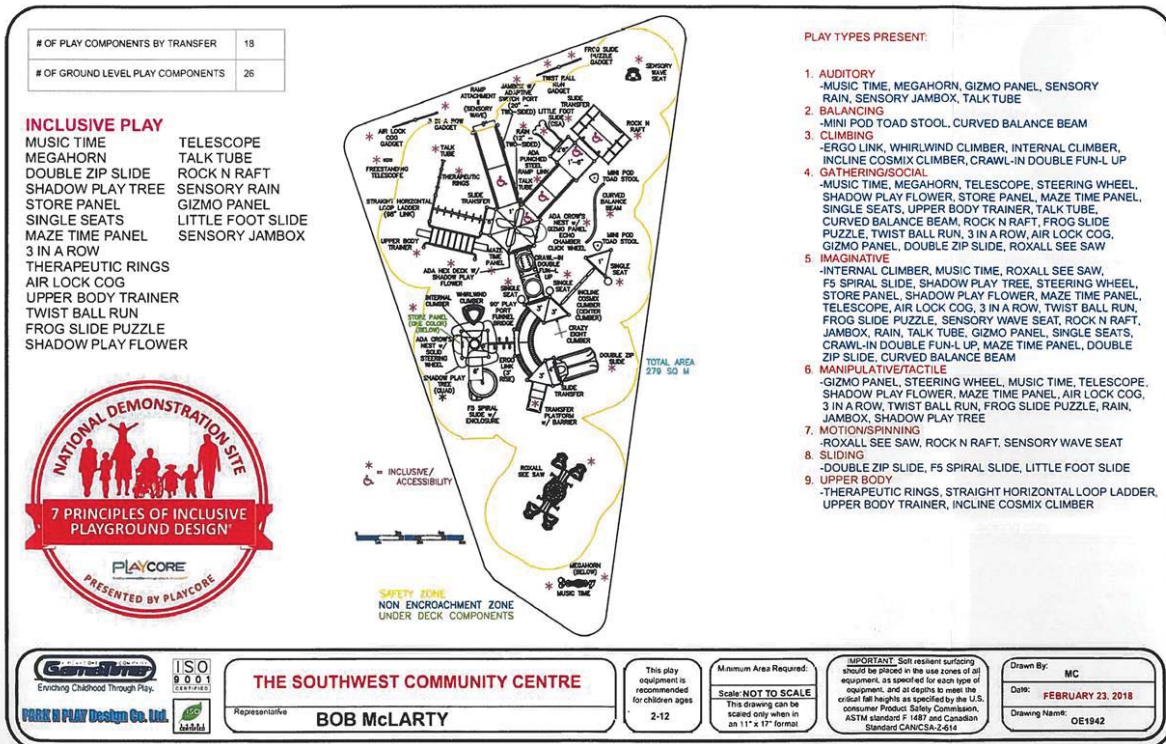


# THE SOUTHWEST COMMUNITY CENTRE



london.ca

Playground Option 1



london.ca

Playground Option 1

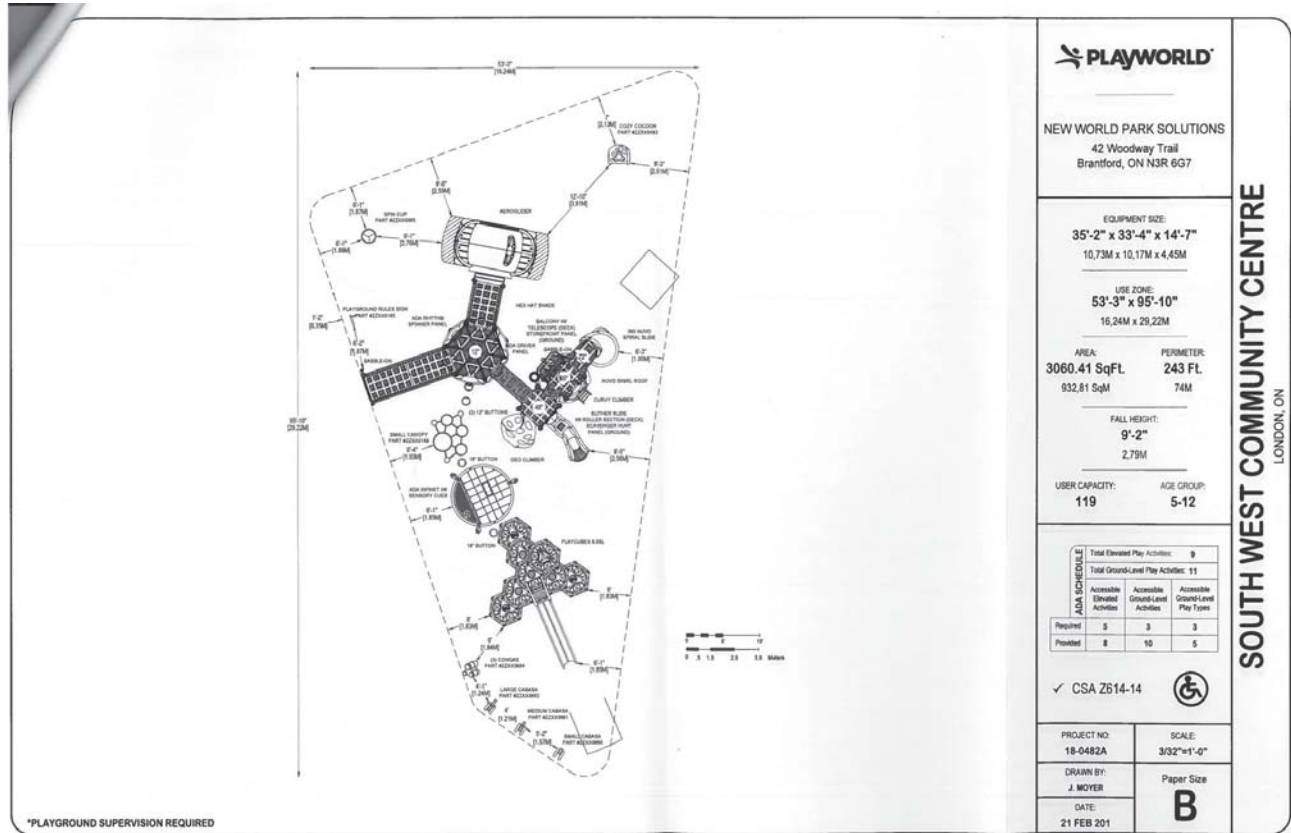


[london.ca](http://london.ca)

Playground Option 2



[london.ca](http://london.ca)



london.ca

Playground Option 2



# Comparison

## Option 1

- Lots of accessible play opportunities:
  - Rock and Raft
  - Roxall See Saw (Tr)
  - Upper body trainer
  - Sensory wave seat (Tr)
  - Double slide (Tr)
  - Sound elements
  - Talk tubes
  - Adaptive Switch Technology
- Less challenging for the 5 to 12 age group
  - Height of most platforms is 3' or less
  - Only one slide at 6' high

## Option 2

- More challenging for the 5 to 12 age group
  - Play cubes – 10' high
  - 2 Slides at 6' high
- Some accessible play opportunities:
  - Aeroglider
  - Spinner (Tr)
  - Net with sensory cues (Tr)
  - Sound elements
  - Cozy cocoon (Tr)



# Discussion

- 1) Recommendation to go with Option 1 as it offers more in terms of accessible play opportunities and creates a more inclusive play space.
- 2) Consult on the needs of people with disabilities and care givers regarding the play space.

<https://www.youtube.com/watch?v=F2Uf-4hhCmE>