



ESA CMP Planning Process and the AODA

Information Meeting

February 21, 2018



London
CANADA

Presentation Overview

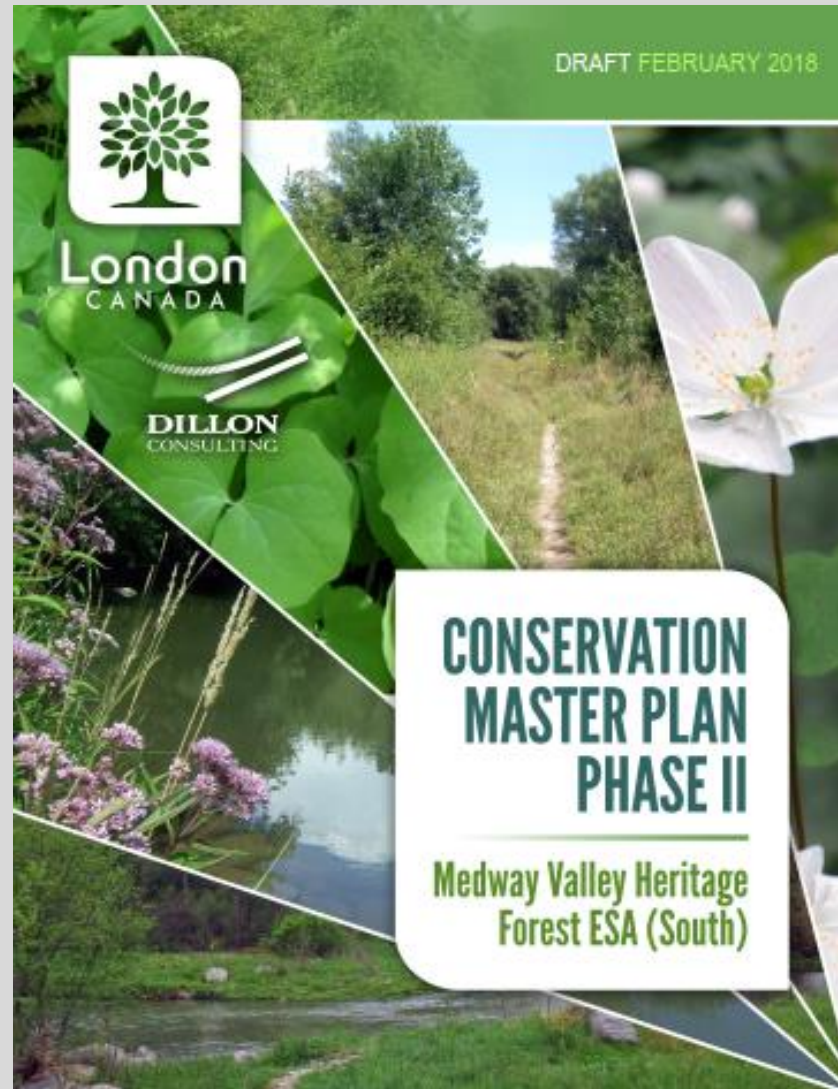
- Welcome to Information Meeting
- Purpose and Goals of Meeting
- AODA and the Conservation Master Planning Process
- What this means for the MVHF ESA (south) CMP?
 - What has remained the same in the CMP?
 - What was revised in the CMP to meet the Guidelines and AODA?
- Next Steps



Purpose of Meeting

Purpose of the meeting:

- To clarify the City of London's requirements to meet the *Accessibility for Ontarians with Disabilities Act* (AODA) within the Conservation Master Planning process.
- To review three main concerns with the October 2017 MVHF ESA (south) CMP before it is submitted to the Planning and Environment Committee



CONSERVATION MASTER PLAN PROCESS

PHASE 1:

- Community Engagement and Participation
- Life Science Inventory and Evaluation
- Boundary Delineation
- Application of Management Zones & Review of Existing Trails
- Identifying Management Issues

PHASE 2:

- Community Engagement and Participation
- Goals, Objectives, Recommendations
- Ecological Protection, Enhancement & Restoration
- Trail Planning & Design Process
- Priorities for Implementation
- Final Conservation Master Plan



Guidelines for Management Zones and Trails in ESAs

Approved by Council February 14, 2017

- Endorsed by Trails Focus Group on May 17, 2016
- Trails Focus Group that endorsed the Guidelines included members of the MVHF ESA (South) CMP Phase II LAC:
 - EEPAC;
 - ACCAC;
 - Nature London;
 - UTRCA;
 - MVHF ESA Adopt an ESA: Friends of Medway Creek; and,
 - MVHF ESA Adopt an ESA: Orchard Park/ Sherwood Forest Ratepayers.
- City has received external recognition for Guidelines including an [Award for Service to the Environment](#) by the Ontario Association of Landscape Architects


Guidelines Revision History |

Guidelines Revision History

Version	Date	Prepared By	Description
1.0	June 4, 2012	City of London Parks Planning and Design, Planning Division with Schollen & Company Inc. and North South Environmental	Approved Planning and Design Standards for Trails in Environmentally Significant Areas
2.0	April 25, 2016	City of London Environmental and Parks Planning, Planning Services and Dillon Consulting Limited	Draft revised guidelines based on consultation with a Trails Focus Group
2.1	May 12, 2016	City of London Environmental and Parks Planning, Planning Services and Dillon Consulting Limited	Revised guidelines submitted to the Trails Focus Group for endorsement
2.2	May 17, 2016	City of London Environmental and Parks Planning, Planning Services and Dillon Consulting Limited	Guidelines endorsed by the Trails Focus Group

Page 1 of 6

MEETING MINUTES



Subject: Trails Focus Group
Date and Time: Monday, May 16, 2016 5:15 – 7:00 pm
Location: London City Hall
File No.: 16-3052

Attendees

Shaughnessy Boland	Westminster Working Group / Adopt an ESA WMP
Ian Bailey	Friends of Killaly Meadows/ Adopt an ESA
Brandon Williamson	UTRCA
Anita Caveney	Nature London
James MacKay	City of London
Linda McDougall	City of London
Andrew Macpherson	City of London
Michael Dawthorne	Accessibility Advisory Committee (ACCAC)
Sandy Levin	Neighbours of Sherwood Forest Adopt an ESA Medway VHF ESA
Dave Potten	Friends of Medway Creek / Adopt an ESA
Don McLeod	Friends of Meadowlily Woods - Adopt an ESA
Thom McClenaghan	Friends of the Coves Subwatershed Inc./ Adopt an ESA
Lauren Des Marteaux	EEPAC
Dave Wake	Kains Woods / Adopt an ESA
Karla Koll	Dillon Consulting, Facilitator
Jennifer Petruniak	Dillon Consulting
Jonathan Harris	Dillon Consulting

Regrets:
 Jane Vincent Havelka Thames Valley Trail Association

*Gary Smith was unable to attend and Don arrived as his alternate.




Documentation of Meeting Minutes

These meeting minutes document Meeting #5 of the Trails Focus Group (TFG). The purpose of the meeting was to review the updated City's Guidelines for Management Zones and Trails in Environmentally Significant Areas (hereafter referred to as the "Guidelines"). Prior to the fifth meeting of the TFG, the City distributed electronic versions of the revised guidelines to members for review.

Purpose for Meeting #5

Prior to this meeting #5 of the TFG, the full revised Guidelines document was distributed for review by TFG members. During the meeting, Dillon led a review of the Guideline document and members of the TFG provided additional feedback and discussion of particular topics

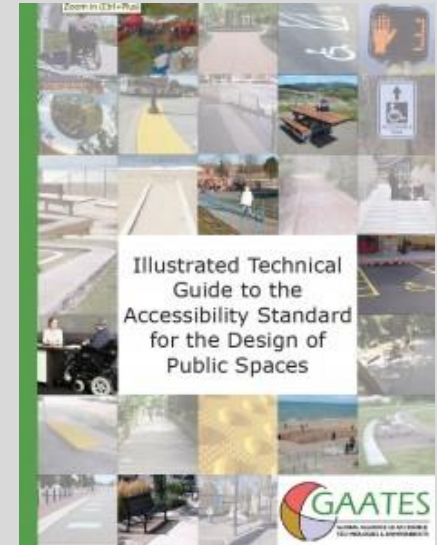
DILLON CONSULTING LIMITED
www.dillon.ca

AODA and the CMP Process

By law, you must make recreational trails accessible if you are:

- a private or non-profit organization with 1+ employee(s) or a public sector organization (i.e. the City of London); and
- building **new** public recreational trails and planning to maintain them or **making changes** (i.e., redevelop) to existing trails and planning to maintain them
- ***The Design of Public Spaces Standard (Ontario Reg. 191/11) (“the Standard”)*** - there can be exceptional conditions where the need to provide accessible trails may need to be reviewed with other legitimate concerns:
 - Exceptions to making the trail accessible are permitted where it can be demonstrated the accessibility requirements would pose a significant risk that would adversely affect water, fish, wildlife, plants, invertebrates, species at risk, ecological integrity or natural heritage values
 - In such instances, ***the City is expected to meet the requirements of the Standard to the greatest extent possible.***



References to AODA in Guidelines

Section 2.1: Policy for Trail Planning and Design

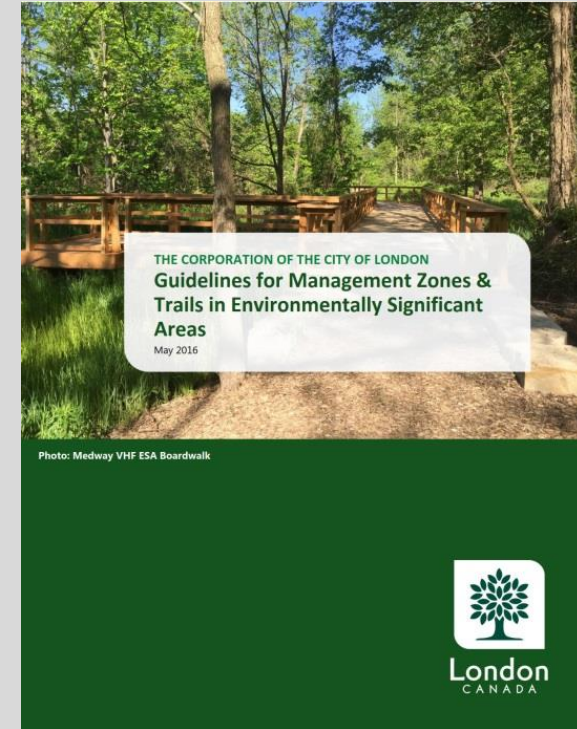
- Enjoyable, safe, accessible trails for recreation appropriate in an ESA and learning environment will be permitted in accordance with recognized accessibility legislation (such as the *Accessibility for Ontarians with Disabilities Act, 2005*), best practices and the above principles [outlined in Guidelines].

Section 2.3: Policy for Trail Planning and Design

- Trails to permit access for persons with disabilities, consistent with these guiding principles and AODA requirements, **will be provided** where this can be achieved while protecting the ecological integrity and ecosystem health of the ESA.

Section 7.1.2 : Design and Construction: Trails

- Design and Maintenance Standards: Where the trail is deemed accessible, the trail in its entirety shall meet AODA recreational trail surface requirements for both firmness and stability.



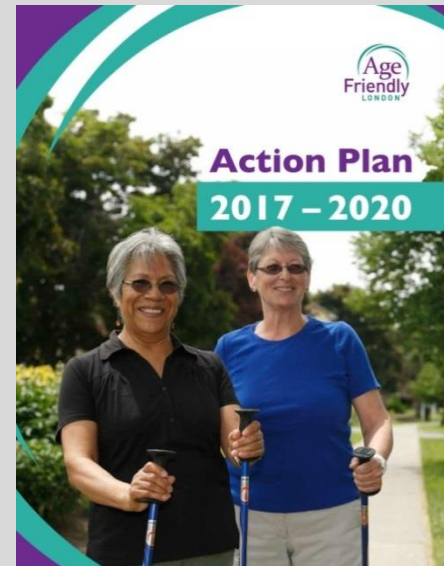
Additional City Policies Taken Into Consideration

The Age Friendly London Action Plan (2017-2020)

- Includes recommendations to increase the age friendliness of trails
- Neighbourhood profiles for Medway and Masonville areas indicate age demographics of 65+ are increasing while younger age groups are on the decline
 - Masonville 2006-2011
 - 28% increase in 65+
 - Medway 2006-2011
 - 10% increase in 65+

London Strengthening Neighbourhoods Strategy (2017-2020)

- Provides recommendations and strategies to empower and create sustainable, safe and active communities while also encouraging diversity and inclusiveness



Recent Comments on the MVHF ESA (south) CMP

Generally two opinions regarding the CMP were voiced by the community and received through public engagement. The two opinions are well-summarized by the two advisory committees to Council, who were also represented on the LAC:

- **Accessibility Advisory Committee of Council (ACCAC):**

- *“Doesn’t support CMP as proposed upgrades to accessibility are superficial; inconsistent with assurances made to ACCAC in the past; inconsistent with legislation (and the spirit of the legislation); and fall significantly short in providing equitable, quality access to the valley for all Londoners, regardless of ability.”*
- *“ACCAC is supportive of some proposed changes, and could support the plan with two additional amendments.”*

- **Environmental and Ecological Planning Advisory Committee (EEPAC):**

- *“Rejects any CMP that includes hardening of trails or bridge crossings of the Medway Creek as it would fail adequately protect the long-term ecological integrity of the ESA.”*
- *“Instead of focusing on increasing recreational use of the area, EEPAC encourages the council and staff to see a secondary goal as an opportunity for MVHF ESA to become a renowned demonstration site of best practises for the protection of ecological integrity, diversity and species at risk within an urban area.”*

Revisions to MVHF ESA (south) CMP

Section of CMP	Overview of <i>Main Changes*</i> from Oct. 2017 version
Environmental Management Strategy	
3.2 - Restoration	No change
3.3 - Naturalization	No change
3.4 - Trail Management	Revisions required
Adaptive Management and Monitoring Framework	
4.3 – Monitoring	No change
Continued Community Engagement	
5.1 Stewardship	No change
5.2 Education	Additional content added
5.3 Community Events	No change
5.4 Opportunities for Scientific Research	No change

*Additional changes and/or edits have been made in the February 2018 version to further clarify existing conditions and/or other conservation efforts completed to date



Overview of Revisions to Final CMP - Trail Strategy

- Changes were triggered based on the formal response received from ACCAC on January 8, 2018. All changes comply with the Guidelines.
- In order to endorse the MVHF ESA (south) CMP, ACCAC requires the following revisions:
 - Upgrade the trail to Level 2 between A11 to the Medway creek at Linkage “D”, noting the current trail runs primarily along a utility overlay within a Natural Environment zone.
 - Install a bridge at Linkage “D”. This will create an accessible trail from A11 to A18 and A19.
 - Extension of the boardwalk at A18 noting erosion exists, resulting in muddy surfacing and trail-widening (by those attempting to avoid the mud). This trail improvement will maintain the trail as a Level 2 accessible trail.

Note: ACCAC originally requested A13 to Linkage D to be accessible, but as this is within a Nature Reserve zone, an accessible Level 2 trail would not be in accordance with the Guidelines. This demonstrates an “environment first” approach.

Revised Sustainable Trail Concept Plan



<ul style="list-style-type: none"> — Contour (5 metre Elevation) — Property Boundaries ▨ Western/Huron Properties ▲ Potential Future Access (PFA) ● Proposed Trail Linkage (not recommended for implementation) ● Proposed Trail Linkage (Medway Creek) ● Proposed Trail Linkage (Snake Creek) Ⓜ Existing Trail Linkage (Metamora Bridge) A # Access Point Existing Trails — City Trail Outside of ESA ● Managed Trail 	<ul style="list-style-type: none"> Managed Trails ▨ Future Connection Outside the ESA — Level One Trail — Level Two Trail — Level Three Trail ▨ Improved Trail Surface Management Zone ▨ Nature Reserve ▨ Natural Environment ▨ Watercourse (also Nature Reserve) ▨ Utility Overlay (4 m)
---	--

EEPAC (& Nature London) Concerns

A formal response was received from EEPAC on December 21, 2017 expressing concerns with regards to the CMP.

EEPAC's Recommendations:

- *"We recommend, based on a serious risk to the ecological integrity and biodiversity of the MVHF ESA, that the council reject any CMP that includes hardening of trails or bridge crossings of the Medway Creek."*
 - A Nature London Conservation Action Alert was distributed to members in early February citing that recommendations in the CMP for bridges and upgraded trails would have negative impacts on the populations of False Rue-anemone
- *"We recommend council encourage staff to focus the CMP more on protecting the ecological integrity of the MVHF ESA and less on recreational use in a revised CMP."*
- *"...we encourage the council and staff to see a secondary goal as an opportunity for this ESA to become a renowned demonstration site of best practices for the protection of ecological integrity, diversity and species at risk within an urban area."*



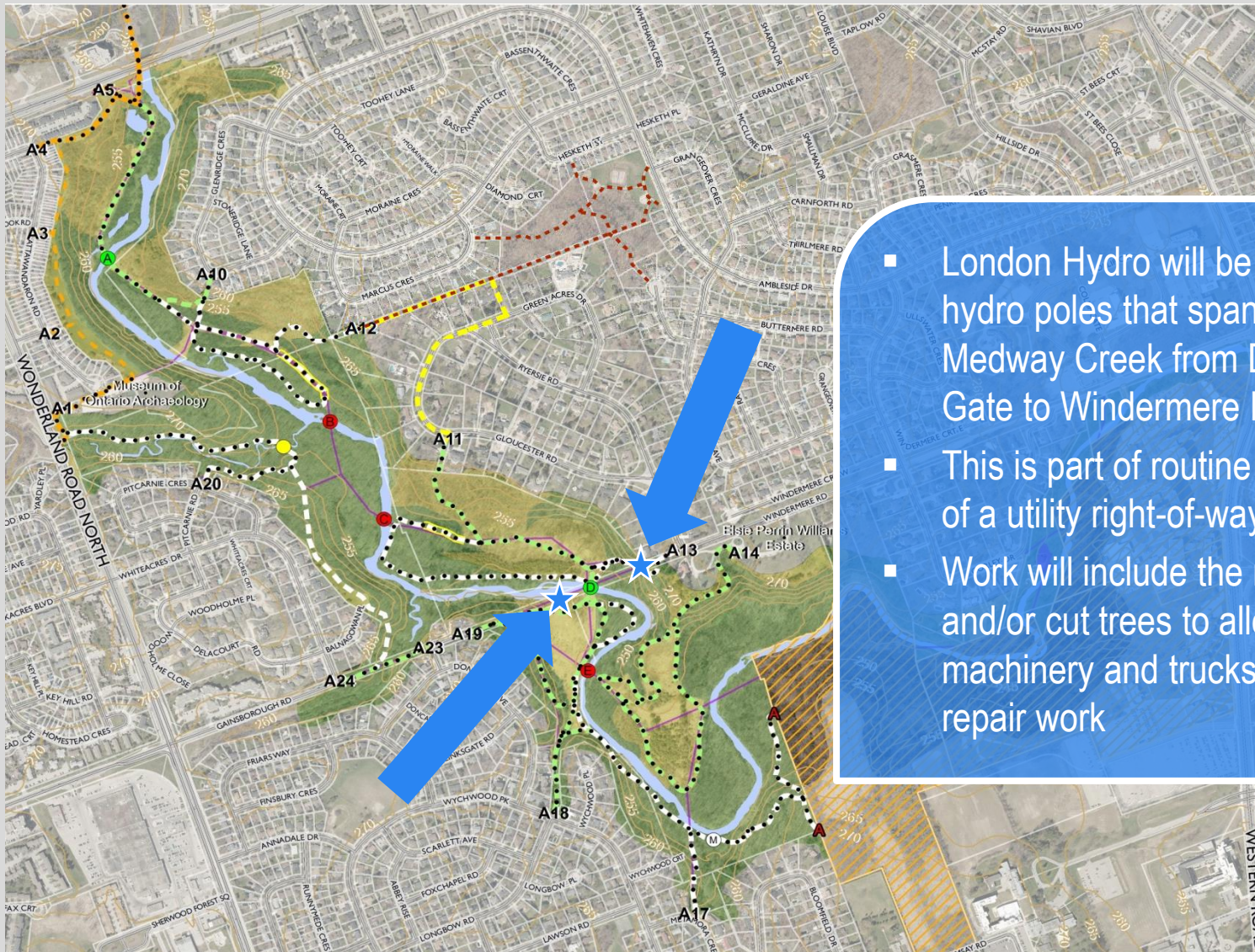
Response to EEPAC Concerns

Use of ESA, “Hardening of Trails”

- Trail management recommendations are provided as a means to manage public use of ESAs through sustainable trail planning and ongoing monitoring and restoration work.
- The recommendations for trails and bridges provided in the CMP are in compliance with the Guidelines, as endorsed by ACCAC, EEPAC and Nature London.
 - Proposed accessible Level 2 trails are in Natural Environment zones and primarily over existing utilities (sewer lines)



Maintenance of Utilities within the ESA



- London Hydro will be repairing two hydro poles that span across Medway Creek from Doncaster Gate to Windermere Road
- This is part of routine maintenance of a utility right-of-way
- Work will include the need to trim and/or cut trees to allow access for machinery and trucks to do this repair work

Response to EEPAC Concerns

Bridges over Medway Creek

- Design criteria for bridges:
 - Span the creek and minimize footprint in riparian zone (i.e., no in-water work).
 - Minimize the footprint of the bridge structure approach embankments
 - Allow relief flow generated by the Regulatory 1:250-year event to go around the bridge within the wider floodplain
- Pedestrian bridge structures would be designed and constructed with a load rated for pedestrians only.



Bridge over Medway Creek (north)

Legend



MVHF ESA (north) – bridge area circa 2014

Google earth

Legend



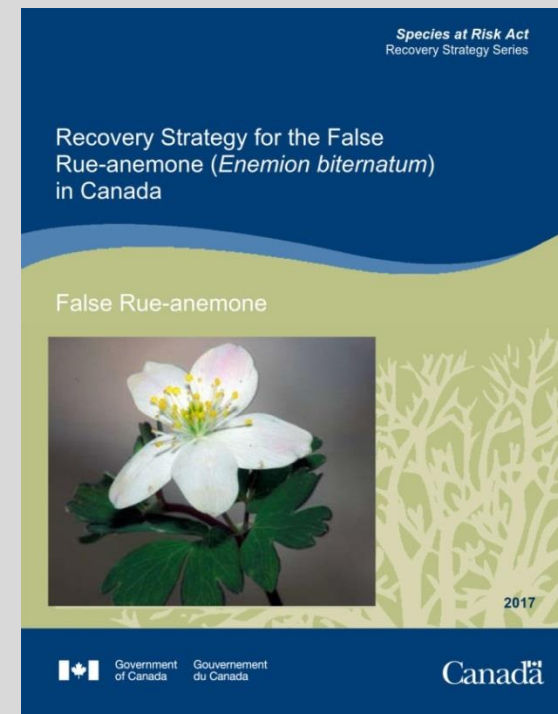
MVHF ESA (north) – bridge area circa 2016

Google earth

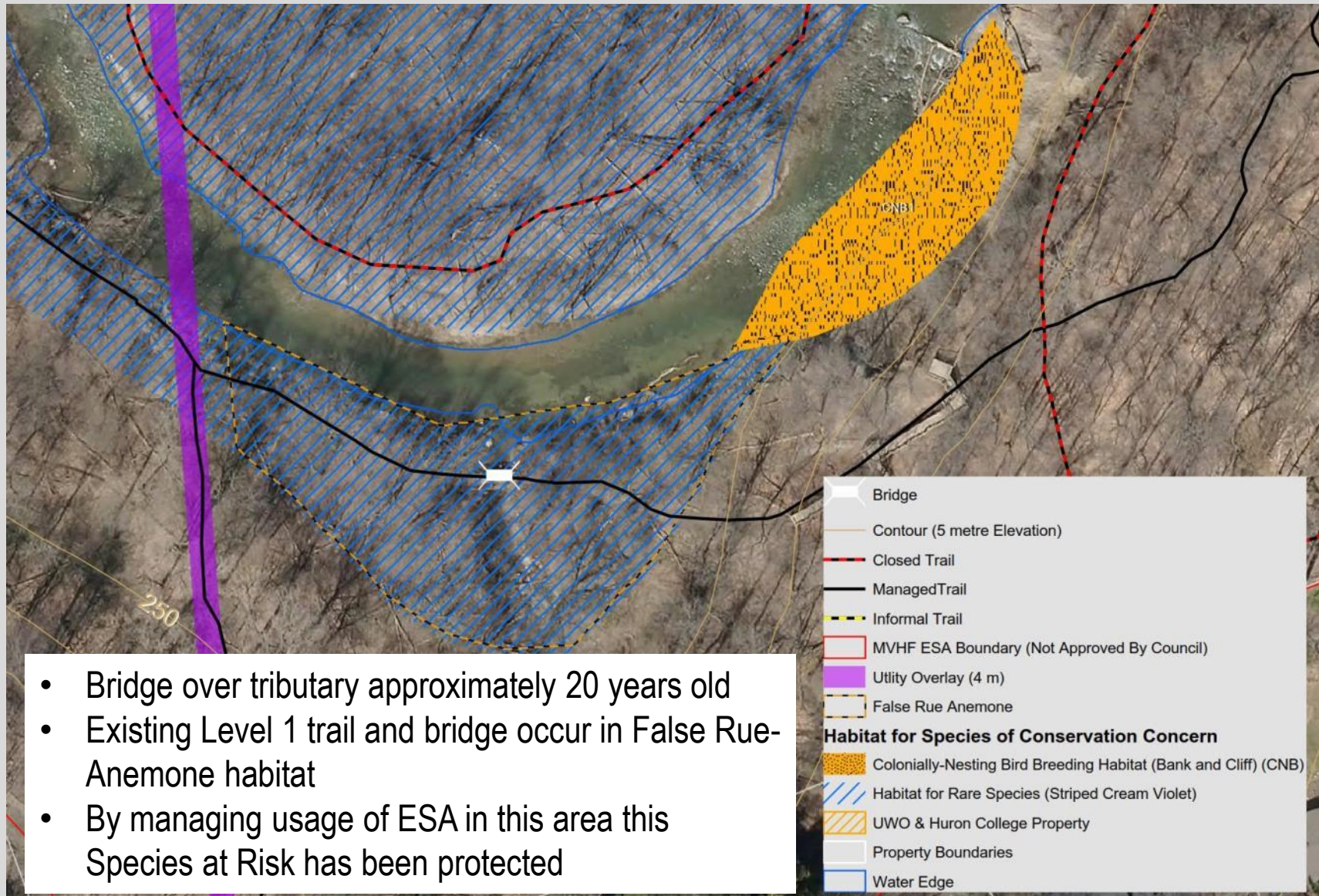
Response to EEPAC (& Nature London) Concerns

False Rue-anemone

- Populations of sensitive species have continued to persist though pressured by invasive species (which are being controlled for).
- 5,435 m of unmanaged/informal trails are proposed to be closed and restored. **Approximately 725 m overlaps False Rue-anemone habitat.**
- Recovery Strategy for the False Rue-anemone (*Enemion biternatum*) in Canada (2017) clearly states as well “Off-trail recreation and trail use” is a threat to this sensitive species if populations undergo trampling and soil compaction.”
 - Off-trail recreation goes on to refer primarily to ATV use, but also refers to inadvertent trampling and resulting soil compaction.
- Recommendations provided in CMP to help encourage users to remain on official trails through use of barriers, upgraded trail surfaces and signage. This is consistent with the federal Recovery Strategy.
- Measures to encourage users to remain on trails and divert users to areas away from the core habitat of sensitive species helps to mitigate the potential for inadvertent trampling
 - **Recovery strategy cites that activities restricted to the surface of recreational trails would not result in the destruction of critical habitat.**



Existing Bridge and Trail near Metamora Protects False Rue-Anemone Habitat



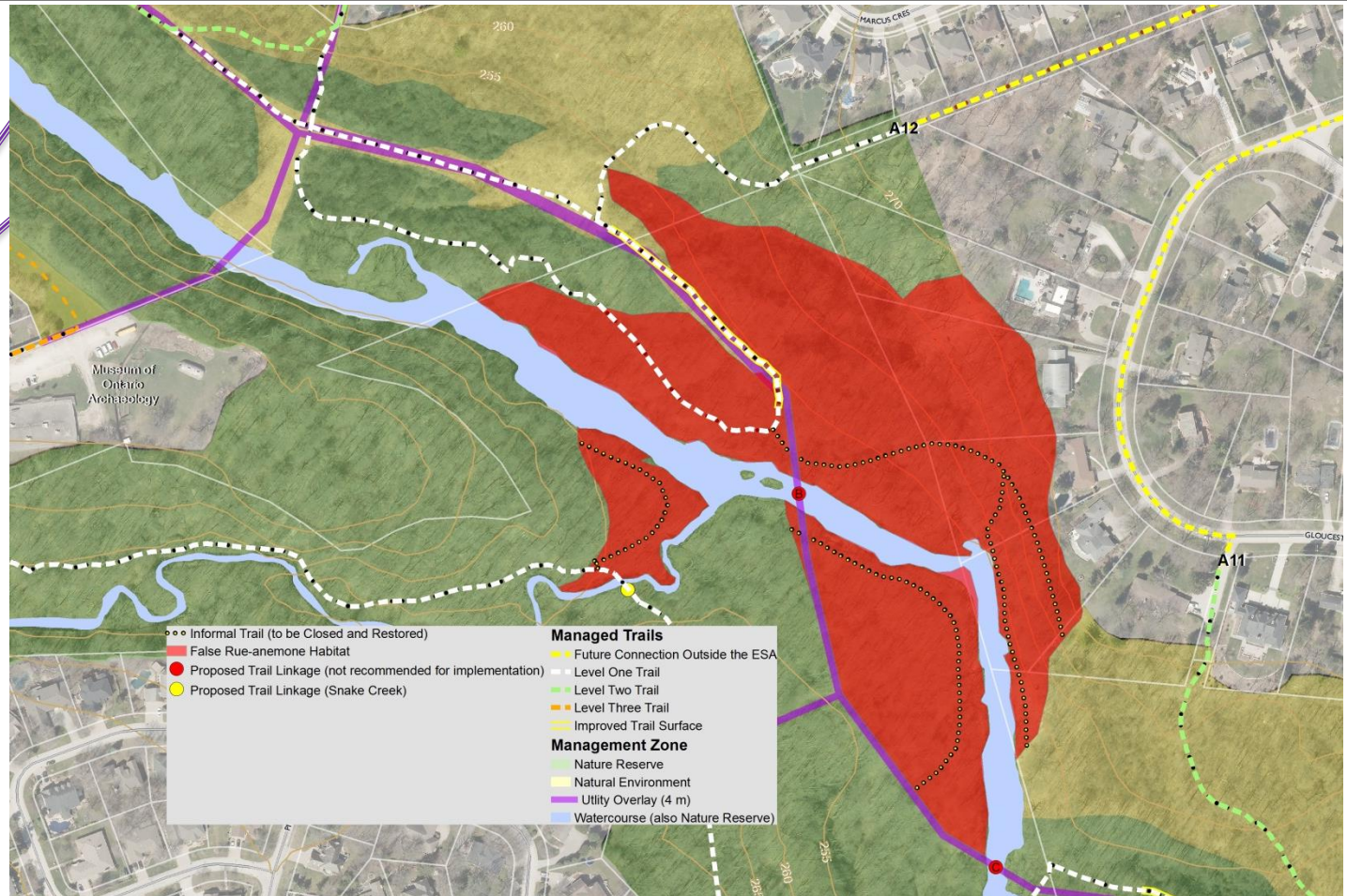
- Bridge over tributary approximately 20 years old
- Existing Level 1 trail and bridge occur in False Rue-Anemone habitat
- By managing usage of ESA in this area this Species at Risk has been protected

Ongoing Protection of Sensitive Features

Level 1 Trail Loop South of A10 and West of A12



Example of a barricade



- ✓ Barricade / Corral at transition from Level 2 to Level 1 Trail Type as per Guidelines
- ✓ Educational / Regulatory Signage on Corral:
 - How to protect Significant Features
 - Why Stay on Trail / Keep Dogs on Leash
 - Use Trail at Own Risk / Not AODA compliant
- ✓ Same signage/species Metamora A17, A18
- ✓ Level 1 Trail Loop use *may go down*

- No access to Level 1 Loop from A11 & A13
- Level 2 trail will draw people north to drier, accessible, longer trail
- ✓ If use goes up, compliance with rules goes up (CPTED)
- ✓ Use and health of sensitive species continue to be monitored
- ✓ **Biggest threat is invasive species, which has been addressed**

Next steps

- The changes made to the February 2018 version of the CMP, and reviewed here, comply with the Guidelines, which incorporate the regulations under the AODA.
- The CMP will be distributed to the LAC and posted on the City's website
 - Target date is Wednesday, March 7, 2018
- The February 2018 version of the CMP will be presented to the Planning and Environment Committee (PEC)
 - Target date is March 19, 2018

