

TO:	CHAIR AND MEMBERS CIVIC WORKS COMMITTEE MEETING ON FEBRUARY 6, 2018
FROM:	KELLY SCHERR, P. ENG., MBA, FEC MANAGING DIRECTOR, ENVIRONMENTAL & ENGINEERING SERVICES AND CITY ENGINEER
SUBJECT:	AMENDMENTS TO THE TRAFFIC AND PARKING BY-LAW

RECOMMENDATION

That on the recommendation of the Managing Director, Environmental & Engineering Services and City Engineer, the attached proposed by-law (Appendix A) **BE INTRODUCED** at the Municipal Council meeting to be held on February 13, 2018 for the purpose of amending the Traffic and Parking By-law (PS-113).

2015-19 STRATEGIC PLAN

The following report supports the Strategic Plan through the strategic focus area of **Strengthening Our Community** by improving safety, traffic operations and residential parking needs in London's neighbourhoods.

BACKGROUND

The Traffic and Parking By-law (PS-113) requires amendments (Appendix A) to address traffic safety, operations and parking concerns. The following amendments are proposed:

1. No Stopping

Teepie Terrace

Due to safety concerns with vehicles stopping in the through or left-turn lanes at the Wonderland Road S intersection, it is recommended to implement 'No Stopping Anytime' on both sides of Teepie Terrace from Wonderland Road S to Old Wonderland Road. An error in the description of the existing 'No Parking Anytime' zone on Teepie Terrace was discovered while reviewing this issue which should be corrected.

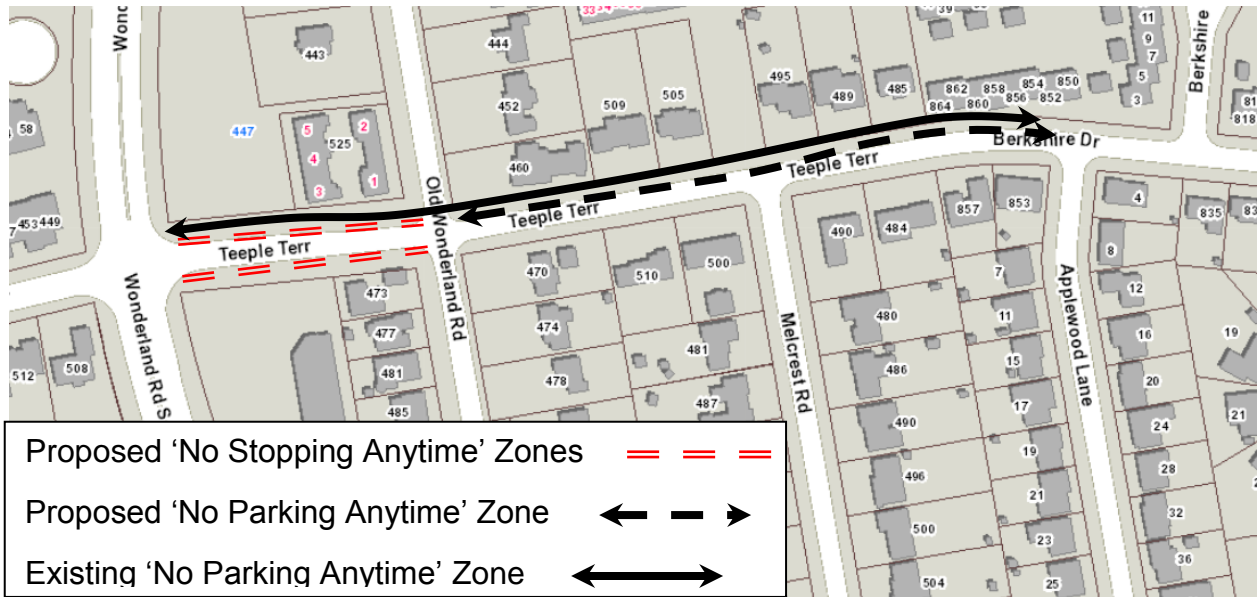


Figure 1: Teepie Terrace

An amendment is required to Schedule 1 (No Stopping) and Schedule 2 (No Parking) for the above change.

2. No Parking

As part of subdivision development, parking bays have been constructed on the following streets:

- The south side of Callingham Drive between Humberside Common and Villagewalk Boulevard. 'No Parking Anytime' zones are recommended for the north side of Callingham Drive and areas on the south side outside the limits of the parking bay where the road is narrowed; and
- The east side of Wickerson Road from Lilac Gate to Tibet Butler Boulevard. 'No Parking Anytime' zones are recommended for the west side of Wickerson Road and the areas on the east side outside the limits of the parking bays where the road is narrowed to 150 m south of Tibet Butler Boulevard. It should be noted that the existing 'No Parking Anytime' zone on the east side of Wickerson Road from 44 m south of Lilac Gate to 54 m south of Lilac Gate will remain.

Callingham Drive

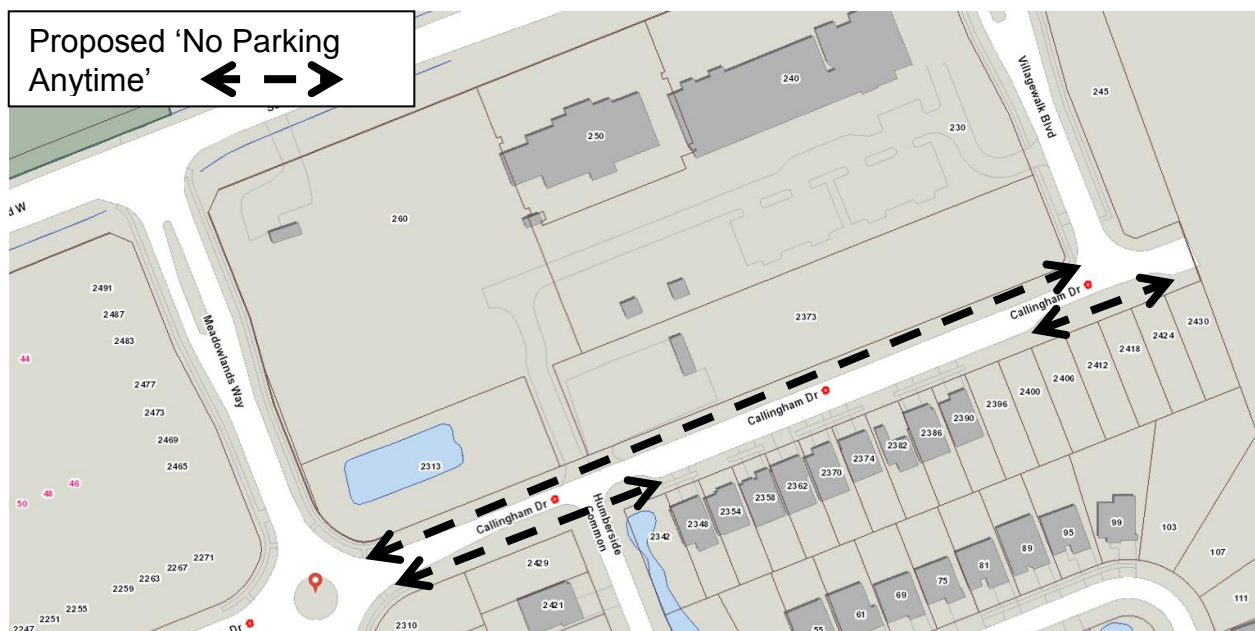


Figure 2: Callingham Drive

Wickerson Road

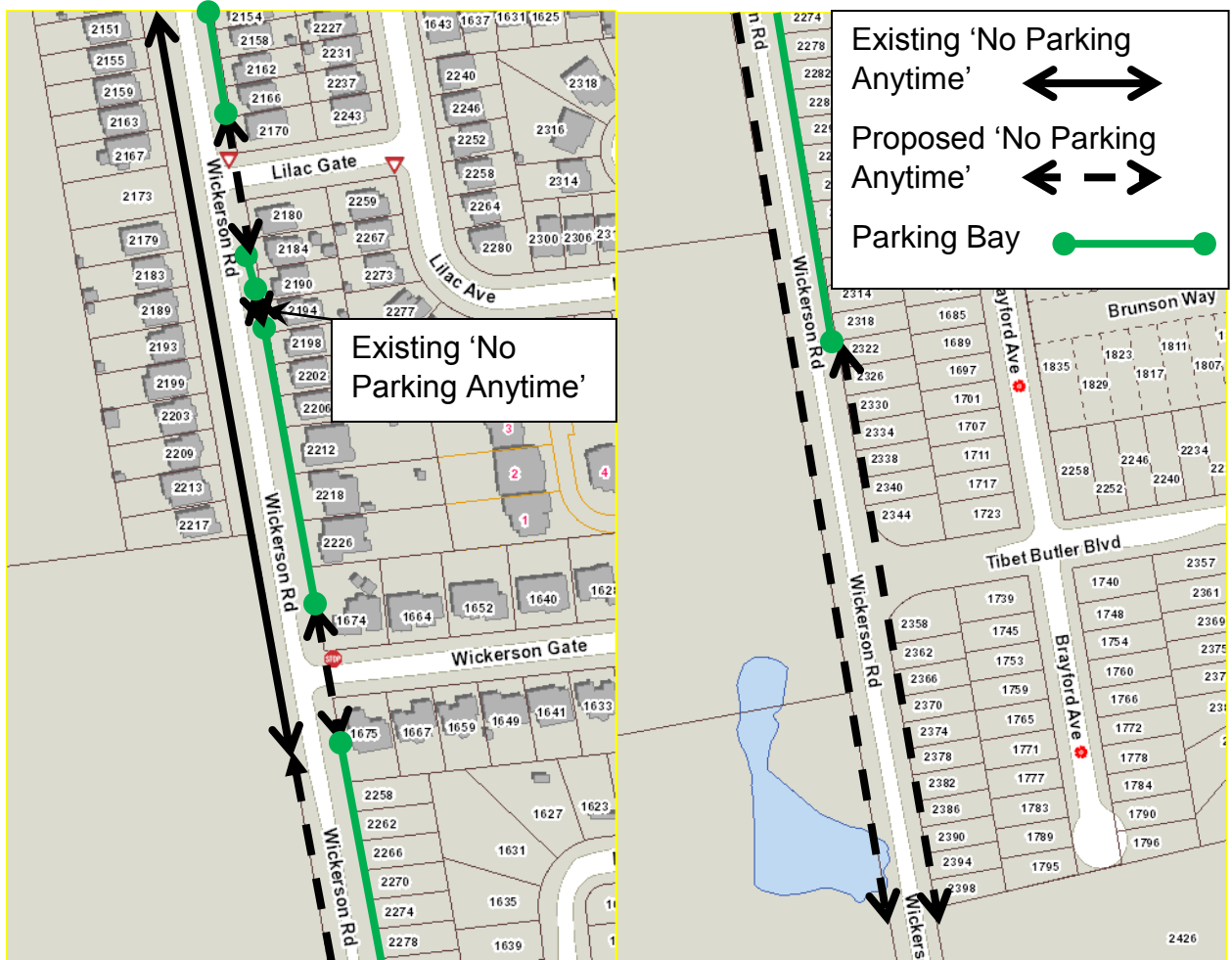


Figure 3: Wickerson Road

An amendment is required to Schedule 2 (No Parking) for the above changes.

3. Limited Parking

Chesham Grove

At the request of local residents, a mail-back survey was sent to the property owners on Chesham Grove where the majority of the respondents supported implementing a '2 Hour Limited Parking 8:00 a.m. to 6:00 p.m. Monday to Friday' zone on Chesham Grove

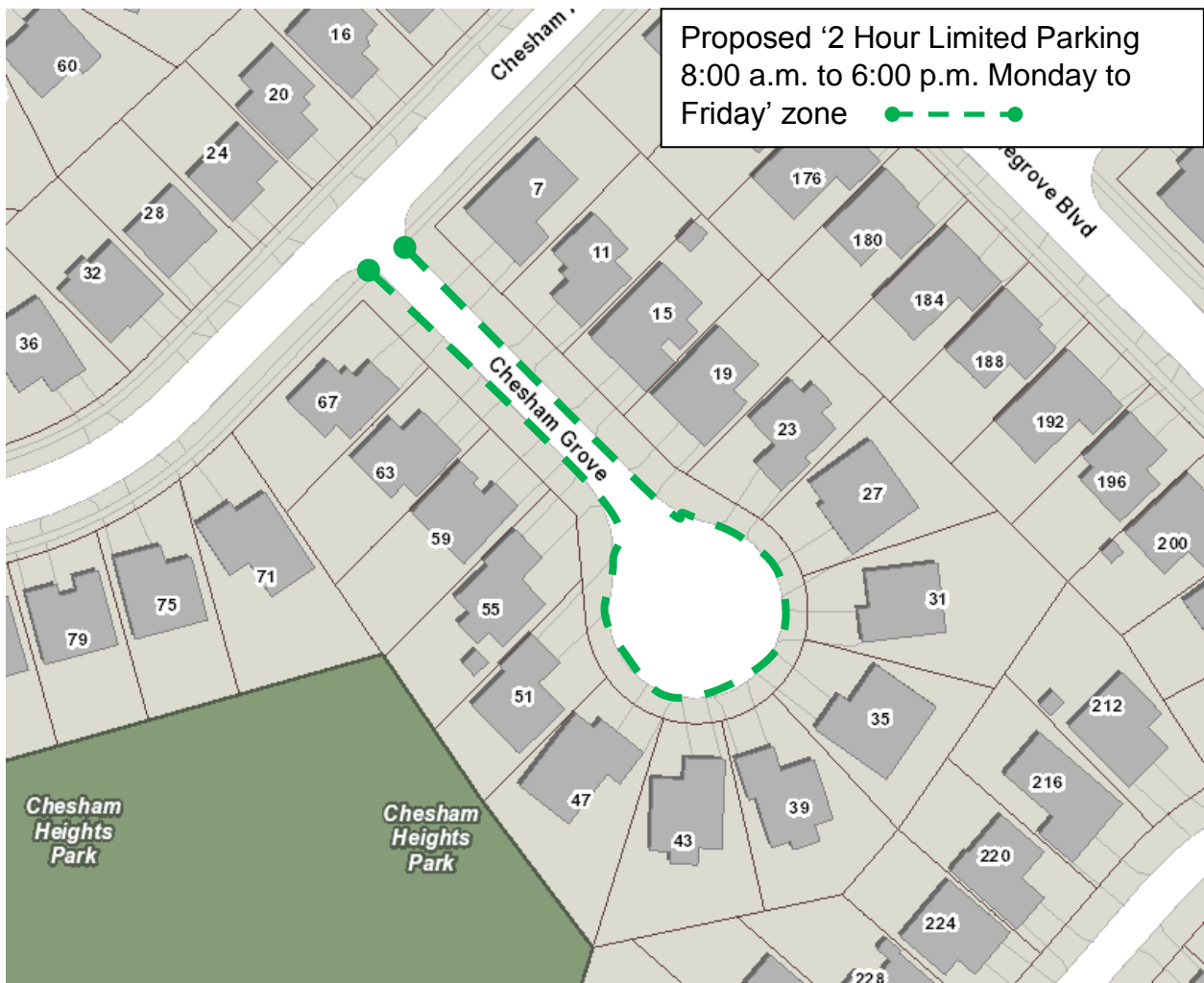


Figure 4: Chesham Grove

An amendment is required to Schedule 6 (Limited Parking) for the above change.

4. No U-Turns

Highbury Avenue N

It is recommended that a 'No U-Turn' restriction for southbound traffic on Highbury Avenue N south of Trafalgar Street be implemented to address safety concerns.

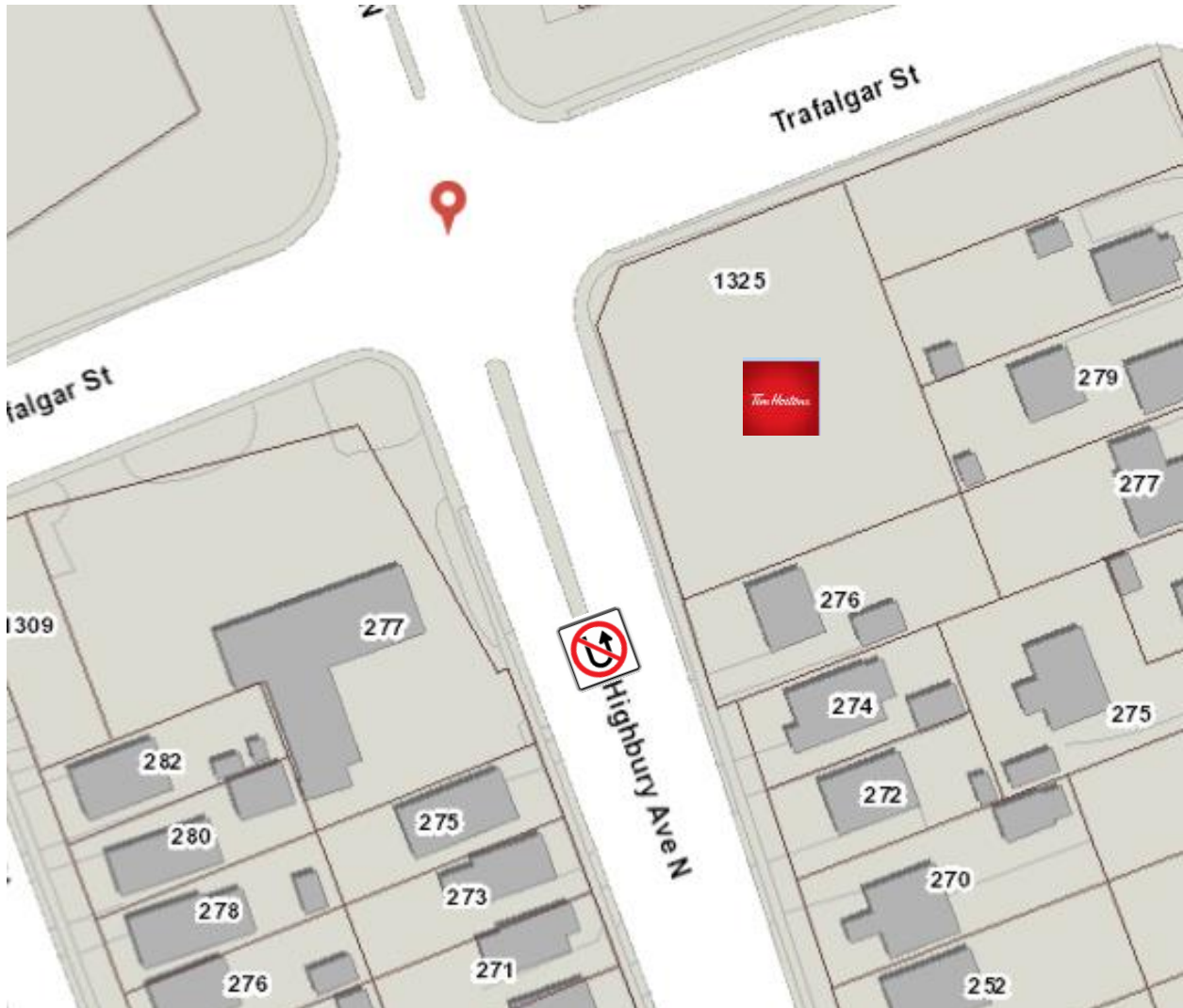


Figure 5: Highbury Avenue

An amendment is required to Schedule 8 (Prohibited Turns) for the above change.

5. **Regulatory Signs**

McWade Place

In order to ensure the safe movement of traffic, it is recommended that McWade Place be designated as a one-way street and a Yield Sign be installed on McWade Place where it exits onto Torrey Pines Way.

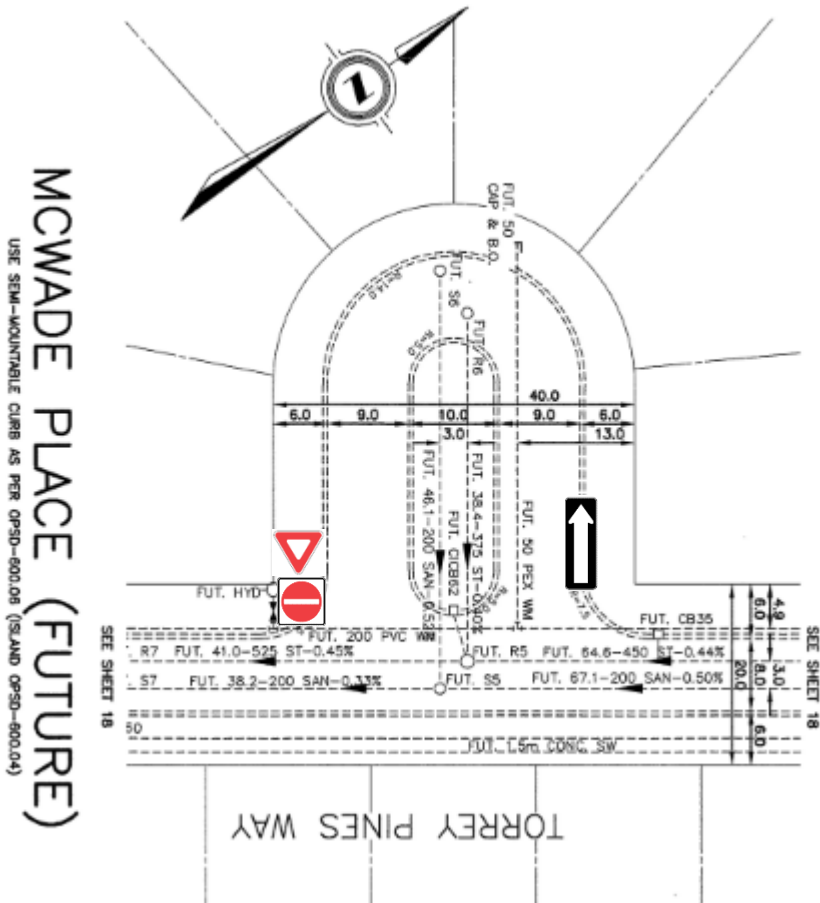


Figure 6: McWade Place

An amendment is required to Schedule 11 (Entering Highway (Yield Signs on Specified Streets)) and Schedule 12 (One-way Streets) for the above changes.

6. Through Highways

Bradley Avenue W

Bradley Avenue W is a newly constructed roadway and is recommended to designate it as a through road.

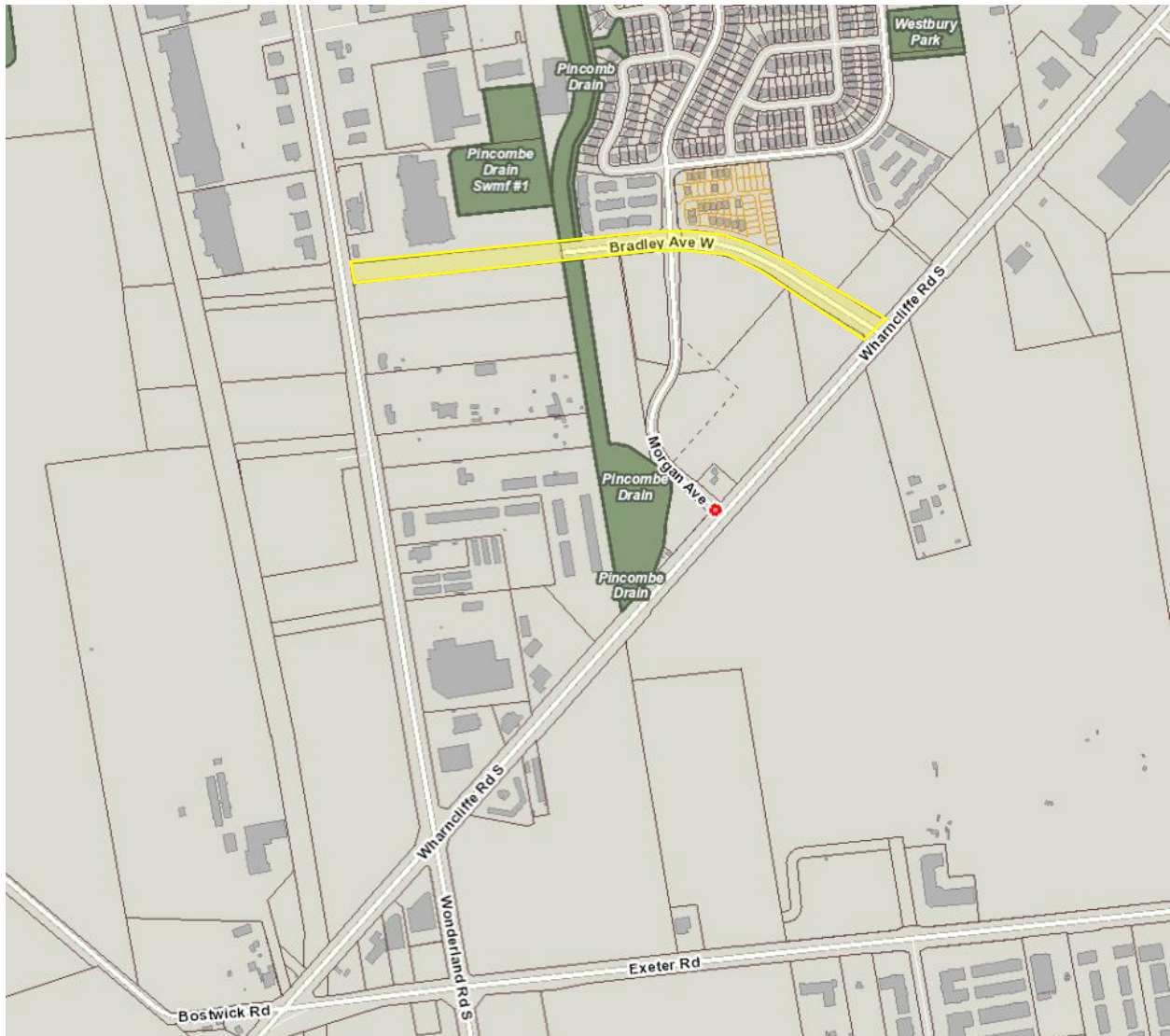


Figure 7: Bradley Avenue W

An amendment is required to Schedule 13 (Through Highway) for the above change.

7. School Zone Speed Limits

It is recommended that the speed limit be reduced to 40 km/h at the following locations as per the School Zone Speed Limit Policy approved by Council:

G.A. Wheable Adult Education Centre

Jacqueline Street Thompson Road to a point 33m north of Edna Street

Thompson Road A point 150 m west of Adelaide Street S to Chesterfield Avenue

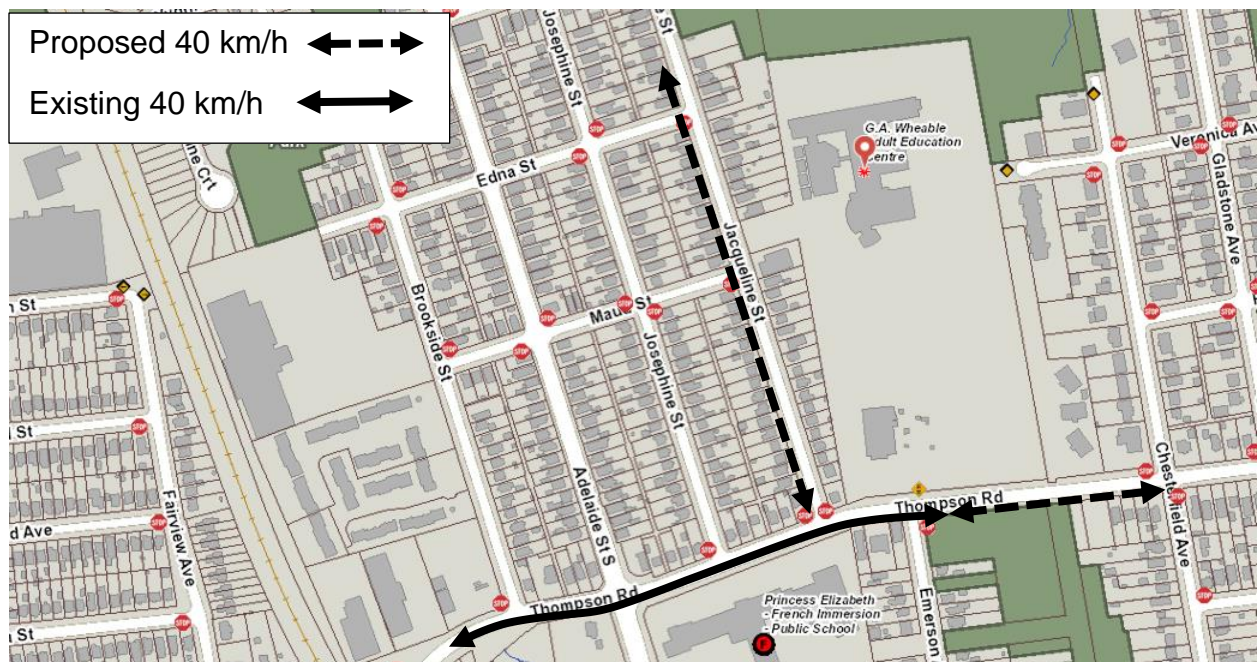


Figure 8: G.A. Wheable Adult Education Centre

John Paul II & Roberts School for the Deaf

Cheapside Street A point 126 m east of Highbury Avenue N to a point 560 m east of Highbury Avenue N

It should be noted that Highbury Avenue N and Oxford Street E are classified as an arterial roads; therefore, the School Zone Speed Limit does not apply.

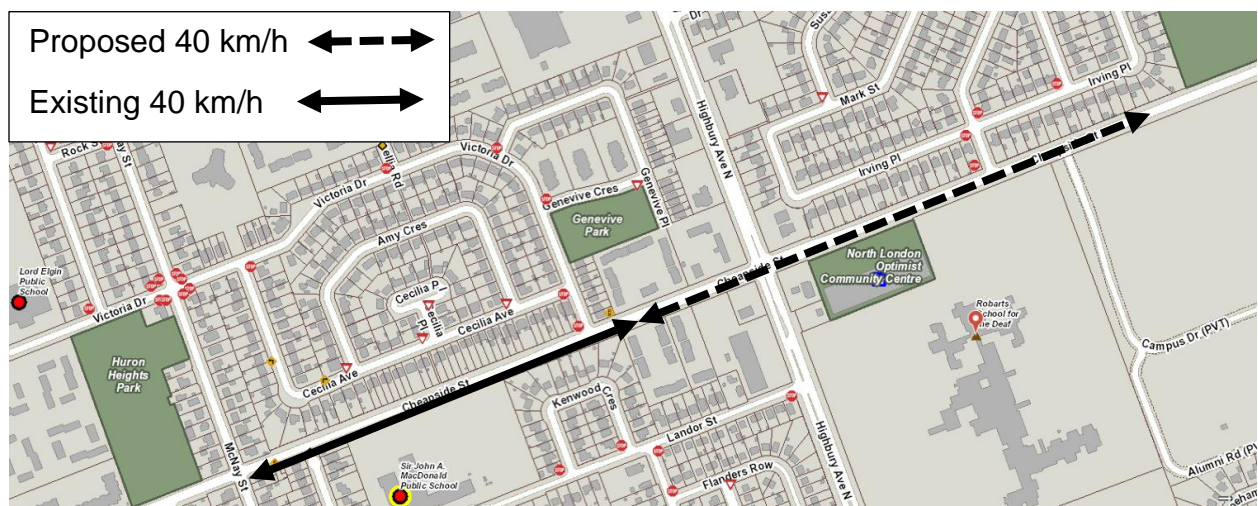


Figure 9: John Paul II & Roberts School for the Deaf

Mother Teresa Catholic – With French Immersion – Secondary School

Marigold Street South Wenige Drive to a point 50 m east of Marigold Court

South Wenige Drive McCallum Road to Sunningdale Road E

It should be noted that Sunningdale Road E is classified as an arterial road; therefore, the School Zone Speed Limit does not apply.

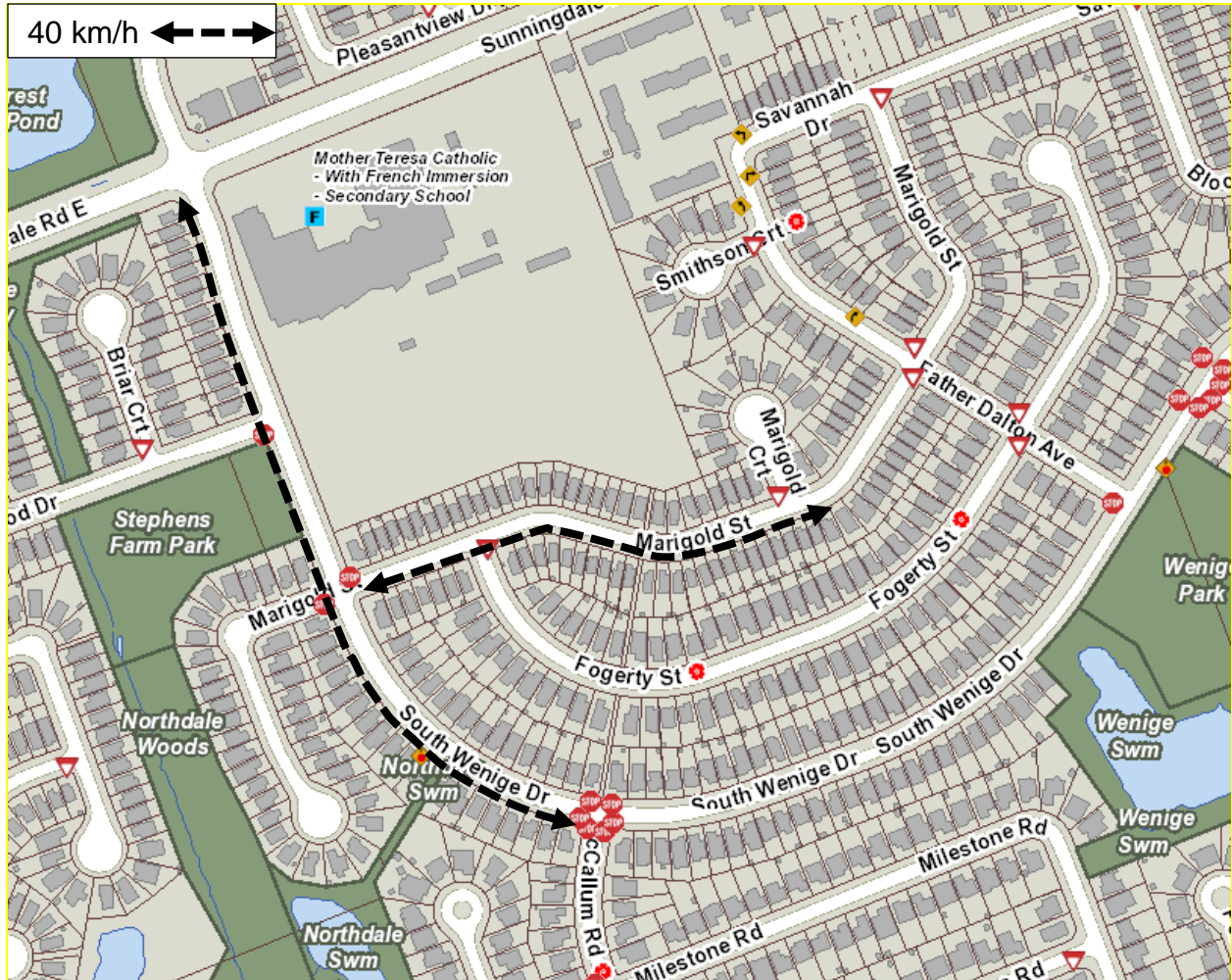


Figure 10: Mother Teresa Catholic – With French Immersion – Secondary School

Nicholas Wilson Public School

- Kinburn Crescent Osgoode Drive (west intersection) to Osgoode Drive (east intersection)
- Mendip Crescent Osgoode Drive (south intersection) to Osgoode Drive (north intersection)
- Osgoode Drive Breckenridge Crescent (east intersection) to Antrim Crescent (south intersection)

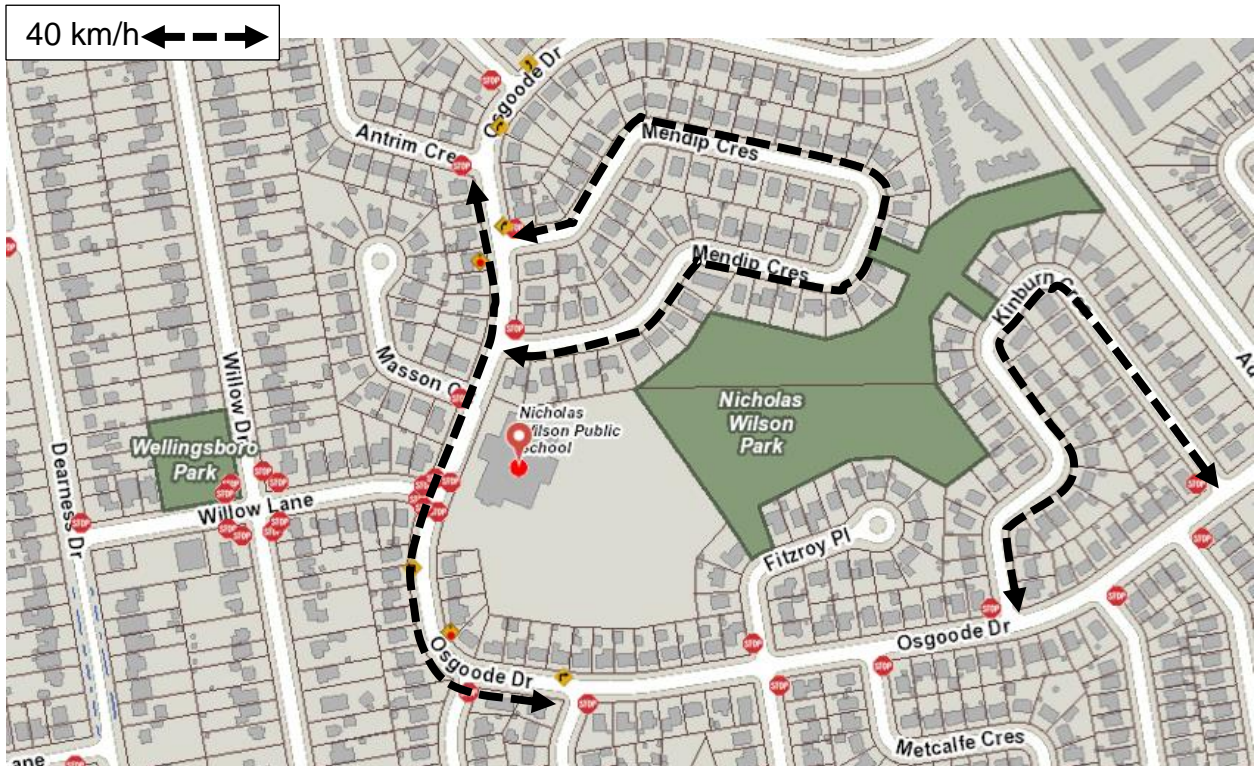


Figure 11: Nicholas Wilson Public School

Stoney Creek Public School

Devos Drive Grenfell Drive to Stackhouse Avenue

Nicole Avenue South Wenige Drive to Stackhouse Avenue

Stackhouse Avenue Grenfell Drive to Nicole Avenue

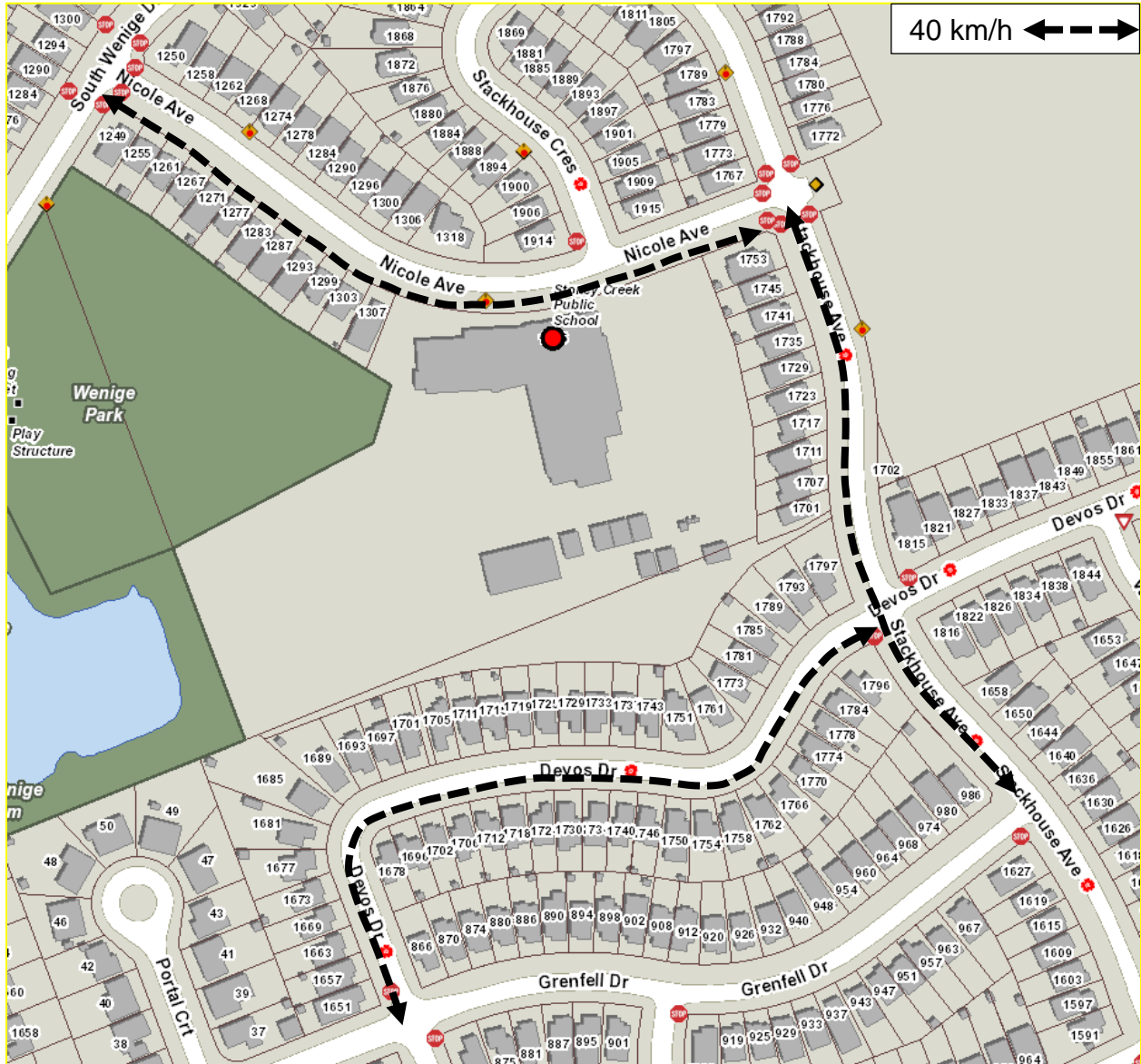


Figure12: Stoney Creek Public School

An amendment is required to Schedule 17.1 (Lower Speed limits) for the above changes.

8. On-street 2 Hour Metered Zones

Talbot Street

A review of the on-street metered parking conditions on Talbot Street from Dufferin Avenue to Kent Street revealed that the parking meter location on the east side of Talbot Street from Dufferin Avenue to Kent St was omitted from the Schedule 20 On-street 2 Hour Meters Zones and should be added.

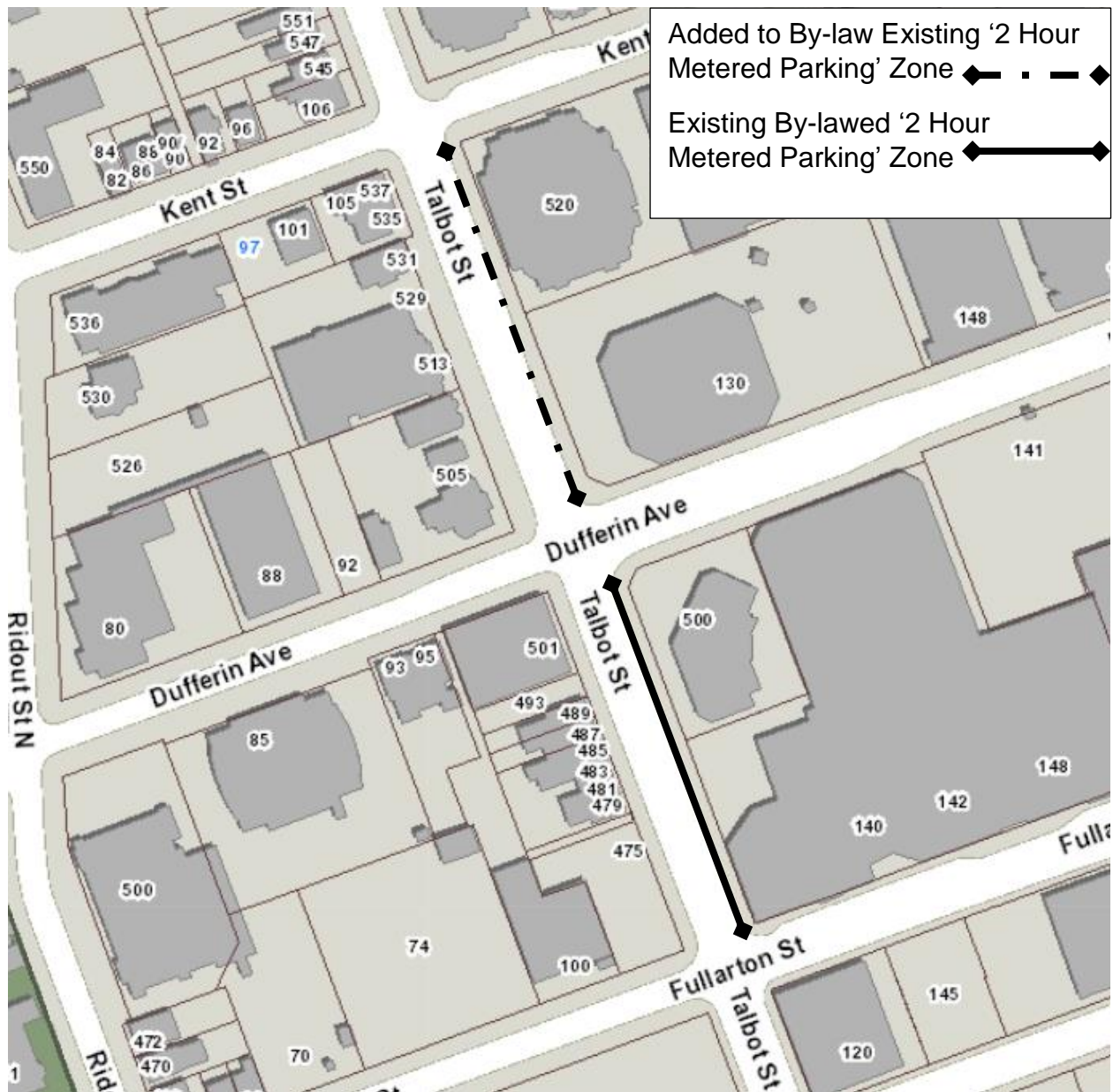


Figure 13: Talbot Street

An amendment is required to Schedule 20 (On-Street 2 Hour Meters Zones) for the above change.

This report was prepared by Andrea Hamilton, Doug Bolton and Shane Maguire of the Roadway Lighting & Traffic Control Division.

PREPARED BY:	REVIEWED & CONCURRED BY:
SHANE MAGUIRE, P. ENG. DIVISION MANAGER, ROADWAY LIGHTING & TRAFFIC CONTROL	EDWARD SOLDO, P.ENG. DIRECTOR, ROADS AND TRANSPORTATION
RECOMMENDED BY:	
KELLY SCHERR, P.ENG., MBA, FEC MANAGING DIRECTOR, ENVIRONMENTAL & ENGINEERING SERVICES AND CITY ENGINEER	

Y:\Shared\Administration\COMMITTEE REPORTS\PS-113 Amendments\2018\2018-02-06\CWC Feb 6 2018 Council Feb 13 2018 (TRAFFIC PARKING BY-LAW AMENDMENTS) Ver. 3.docx

January 25, 2018/sm

Attach: Appendix A: Proposed Traffic & Parking By-Law Amendments

cc. City Solicitor's Office
Parking Office

APPENDIX A

BY-LAW TO AMEND THE TRAFFIC & PARKING BY-LAW (PS-113)

Bill No.

By-law No. PS-113

A by-law to amend By-law PS-113 entitled, "A by-law to regulate traffic and the parking of motor vehicles in the City of London."

WHEREAS subsection 10(2) paragraph 7. Of the *Municipal Act, 2001*, S.O. 2001, c.25, as amended, provides that a municipality may pass by-laws to provide any service or thing that the municipality considers necessary or desirable to the public;

AND WHEREAS subsection 5(3) of the *Municipal Act, 2001*, as amended, provides that a municipal power shall be exercised by by-law;

NOW THEREFORE the Municipal Council of The Corporation of the City of London enacts as follows:

1. **No Stopping**

Schedule 6 (Limited Parking) of the By-law PS-113 is hereby amended by **adding** the following row:

Teepie Terrace	Both	Wonderland Road S	Old Wonderland Road	Anytime
----------------	------	-------------------	---------------------	---------

2. **No Parking**

Schedule 6 (Limited Parking) of the By-law PS-113 is hereby amended by **deleting** the following row:

Teepie Terrace	North	Applewood Lane	Wonderland Road S	Anytime
Wickerson Road	West	Byron Baseline Road	A point 40m south of Wickerson Gate	Anytime

Schedule 6 (Limited Parking) of the By-law PS-113 is hereby amended by **adding** the following row:

Berkshire Drive	North	A point 43 m west of Applewood Lane	Applewood Lane	Anytime
Callingham Drive	North	Meadowlands Way	Villagewalk Boulevard	Anytime

Callingham Drive	South	Meadowlands Way	A point 20 m east of Humberside Common	Anytime
Callingham Drive	South	A point 156 m east of Humberside Common	A point 210 m east of Humberside Common	Anytime
Teeple Terrace	North	Old Wonderland Road	A point 92 m east of Melcrest Road	Anytime
Wickerson Road	East	A point 20 m north of Lilac Gate	A point 30 m south of Lilac Gate	Anytime
Wickerson Road	East	A point 18 m north of Wickerson Gate	A point 15 m south of Wickerson Gate	Anytime
Wickerson Road	East	A point 101 m north of Tibet Butler Boulevard	A point 150 m south of Tibet Butler Boulevard	Anytime
Wickerson Road	West	Byron Baseline Road	A point 150 m south of Tibet Butler Boulevard	Anytime

3. Limited Parking

Schedule 6 (Limited Parking) of the By-law PS-113 is hereby amended by **adding** the following row:

Chesham Grove	Both	South limit of Chesham Grove to Chesham Avenue	8:00 a.m. to 6:00 p.m.	2 Hour Monday to Friday
---------------	------	--	------------------------	-------------------------

4. Prohibited Turns

Schedule 8 (Prohibited Turns) of the said By-law PS-111 is hereby amended by **adding** the following rows:

Highbury Avenue N at a point 62 m south of Trafalgar Street	Southbound	"U" Turn
---	------------	----------

5. Yield Sign Locations

Schedule 11 (Yield Signs) of the PS-113 By-law is hereby amended by **adding** the following row:

Southbound	McWade Place	Torrey Pines Way (south intersection)
------------	--------------	---------------------------------------

6. One-Way Streets

Schedule 12 (One-Way Streets) of the PS-113 By-law is hereby amended by **adding** the following row:

McWade Place	Torrey Pines Way (north intersection)	Torrey Pines Way (south intersection)	Westbound & Eastbound
--------------	---------------------------------------	---------------------------------------	-----------------------

7. Through Highways

Schedule 13 (Through Highways) of the PS-113 By-law is hereby amended by **adding** the following rows:

Bradley Avenue W	Wonderland Road S	Wharnccliffe Road S
------------------	-------------------	---------------------

8. Lower Speed Limits

Schedule 17.1 (Lower Speed Limits) of the PS-113 By-law is hereby amended by **deleting** the following rows:

Cheapside Street	McNay Street	28 m east of Victoria Street	40 km/h
Thompson Road	A point 150 m west of Adelaide Street S	A point 86 m east of Emerson Avenue	40 km/h

Schedule 17.1 (Lower Speed Limits) of the PS-113 By-law is hereby amended by **adding** the following rows:

Cheapside Street	McNay Street	A point 560 m east of Highbury Avenue N	40 km/h
Devos Drive	Grenfell Drive	Stackhouse Avenue	40 km/h
Jacqueline Street	Thompson Street	A point 33 m north of Edna Street	40 km/h
Kinburn Crescent	Osgoode Drive (west intersection)	Osgoode Drive (east intersection)	40 km/h
Marigold Street	South Wenige Drive	A point 50 m east of Marigold Court	40 km/h

Mendip Crescent	Osgoode Drive (south intersection)	Osgoode Drive (north intersection)	40 km/h
Nicole Avenue	South Wenige Drive	Stackhouse Avenue	40 km/h
Osgoode Drive	Breckenridge Crescent (east intersection)	Antrim Crescent (south intersection)	40 km/h
South Wenige Drive	McCallum Road	Sunningdale Road E	40 km/h
Stackhouse Avenue	Grenfell Drive	Nicole Avenue	40 km/h
Thompson Road	A point 150 m west of Adelaide Street S	Chesterfield Avenue	40 km/h

9. On-Street 2 Hour Metered Zones

Schedule 20 (On-Street 2 Hour Metered Zones) of the By-law PS-113 is hereby amended by **deleting** the following row:

Talbot Street	East	Dufferin Avenue	Fullarton Street.	8:00 a.m. to 6:00 p.m.
---------------	------	-----------------	-------------------	------------------------

Schedule 6 (Limited Parking) of the By-law PS-113 is hereby amended by **adding** the following row:

Talbot Street	East	Fullarton Street	Kent Street	8:00 a.m. to 6:00 p.m.
---------------	------	------------------	-------------	------------------------

This by-law comes into force and effect on the day it is passed.

PASSED in Open Council on February 13, 2018

Matt Brown

Mayor

Catharine Saunders

City Clerk

First Reading – February 13, 2018

Second Reading – February 13, 2018

Third Reading – February 13, 2018