

Bill No. 43
2018

By-law No. S.- _____

A by-law to lay out, constitute, establish and assume lands in the City of London as public highway. (as widening to Riverside Drive east of Beaverbrook Avenue)

WHEREAS it is expedient to establish the lands hereinafter described as public highway;

NOW THEREFORE the Municipal Council of The Corporation of the City of London enacts as follows:

1. The lands and premises hereinafter described are laid out, constituted, established and assumed as public highway as widening to Riverside Drive east of Beaverbrook Avenue, namely:

“Part of Park Lot 6 East of Francis Street (now Beaverbrook Avenue), in the geographic Township of London, now in the City of London and County of Middlesex, designated as Part 1 on Reference Plan 33R-19886.”

2. This by-law comes into force and effect on the day it is passed.

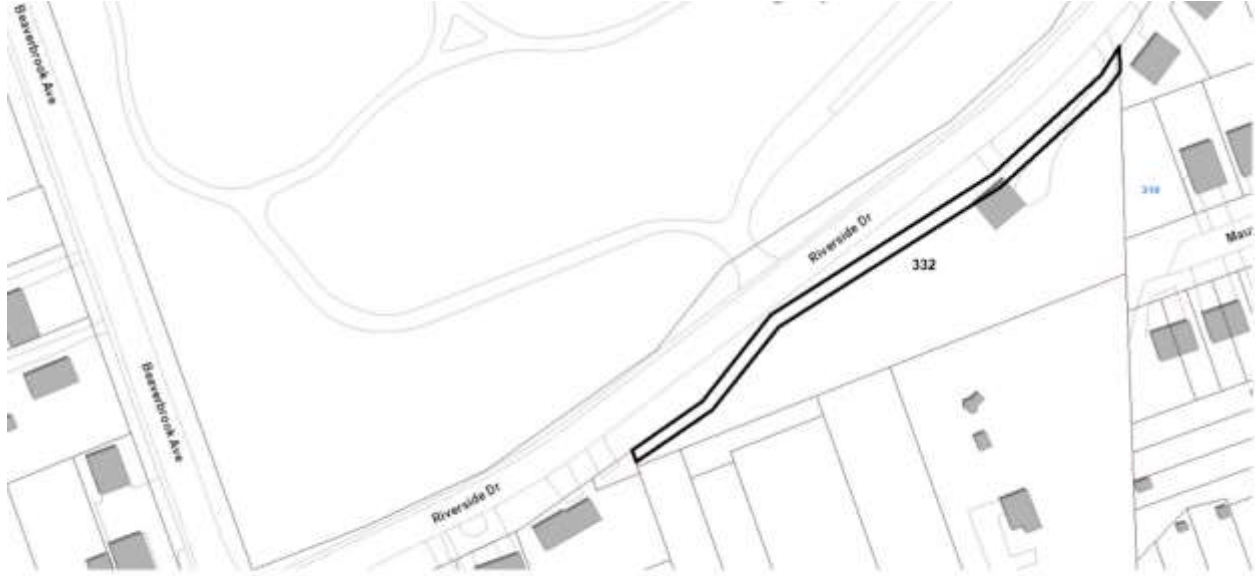
PASSED in Open Council on January 16, 2018.

Matt Brown
Mayor

Catharine Saunders
City Clerk

First Reading – January 16, 2018
Second Reading – January 16, 2018
Third Reading – January 16, 2018

LOCATION MAP



 SUBJECT LANDS