

| | |
|-----------------|--|
| TO: | CHAIR AND MEMBERS CIVIC WORKS COMMITTEE MEETING ON DECEMBER 4, 2017 |
| FROM: | KELLY SCHERR, P. ENG., MBA, FEC MANAGING DIRECTOR, ENVIRONMENTAL & ENGINEERING SERVICES AND CITY ENGINEER |
| SUBJECT: | AMENDMENTS TO THE TRAFFIC AND PARKING BY-LAW |

| |
|-----------------------|
| RECOMMENDATION |
|-----------------------|

That on the recommendation of the Managing Director, Environmental & Engineering Services and City Engineer, the attached proposed by-law (Appendix A) **BE INTRODUCED** at the Municipal Council meeting to be held on December 12, 2017 for the purpose of amending the Traffic and Parking By-law (PS-113).

| |
|-------------------------------|
| 2015-19 STRATEGIC PLAN |
|-------------------------------|

The following report supports the Strategic Plan through the strategic focus area of **Strengthening Our Community** by improving safety in the vicinity of London's schools.

| |
|-------------------|
| BACKGROUND |
|-------------------|

The Traffic and Parking By-law (PS-113) requires amendments (Appendix A) to implement speed limit reductions to 40 km/h as per the School Zone Speed Limit Policy approved by Council to address traffic safety, operations and parking concerns. The following amendments are proposed:

School Zone Speed Limits

It recommended that the speed limit be reduced to 40 km/h at the following locations as per the School Zone Speed Limit Policy approved by Council:

A.B. Lucas Secondary School

Glenora Drive Glengarry Avenue to 304 m west of Glengarry Avenue

Tennent Avenue Adelaide Street N to 53 m east of North Vernon Avenue



Figure 1: A.B. Lucas Secondary School

John Dearness Public School

Chalfont Road North limit of Chalfont Road to Hartson Road

Santa-Monica Road Naomee Crescent (South intersection) to South limit of Santa-Monica Road

It should be noted that Riverside Drive and Sanatorium Road are classified as arterial roads; therefore, the School Zone Speed Limit does not apply.

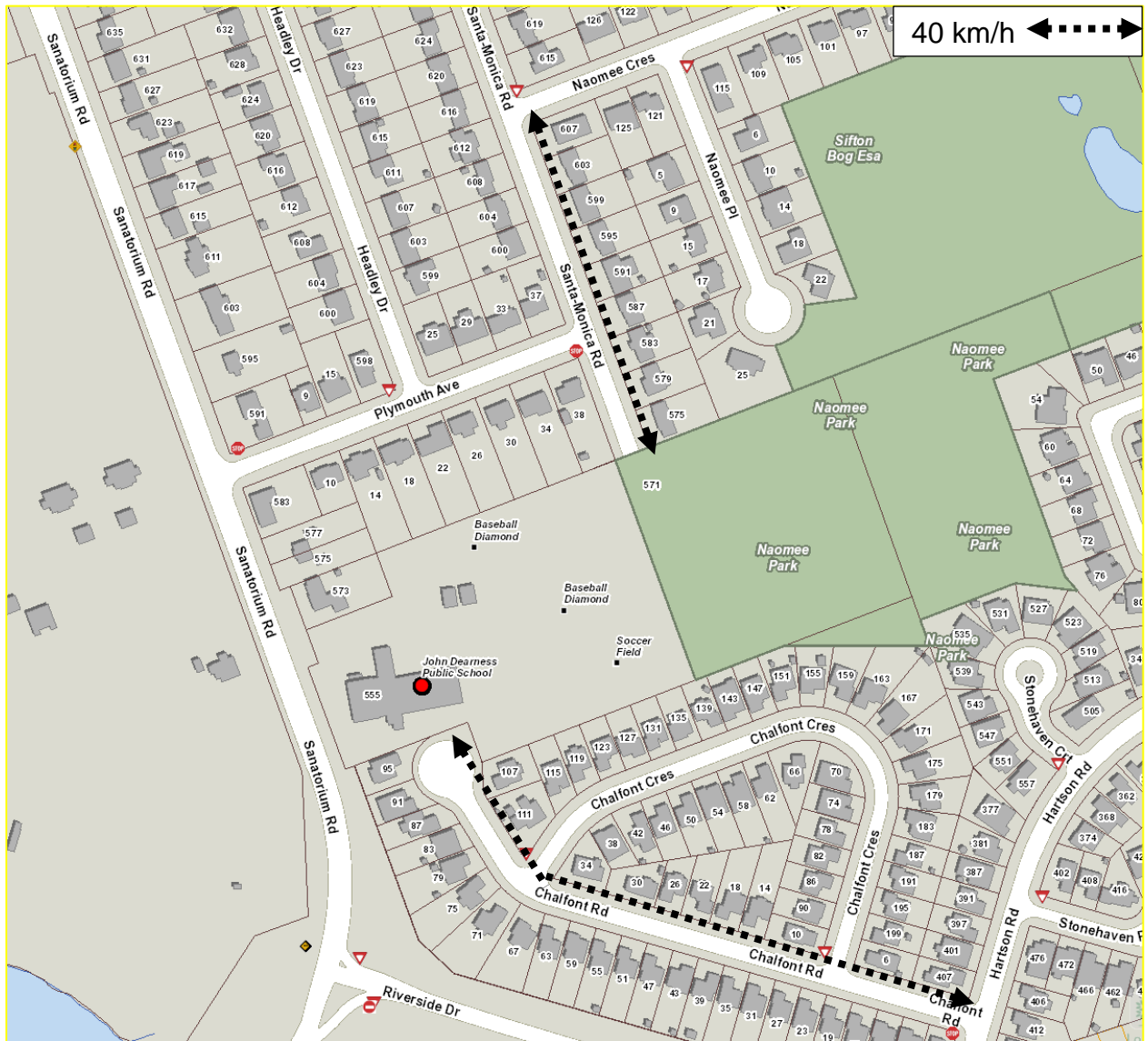


Figure 2: John Dearness Public School

Kensal Park – French Immersion – Public School

Ridgewood Crescent Greenwood Avenue to Kernohan Parkway

It should be noted that Springbank Drive is classified as an arterial road; therefore, the School Zone Speed Limit does not apply.

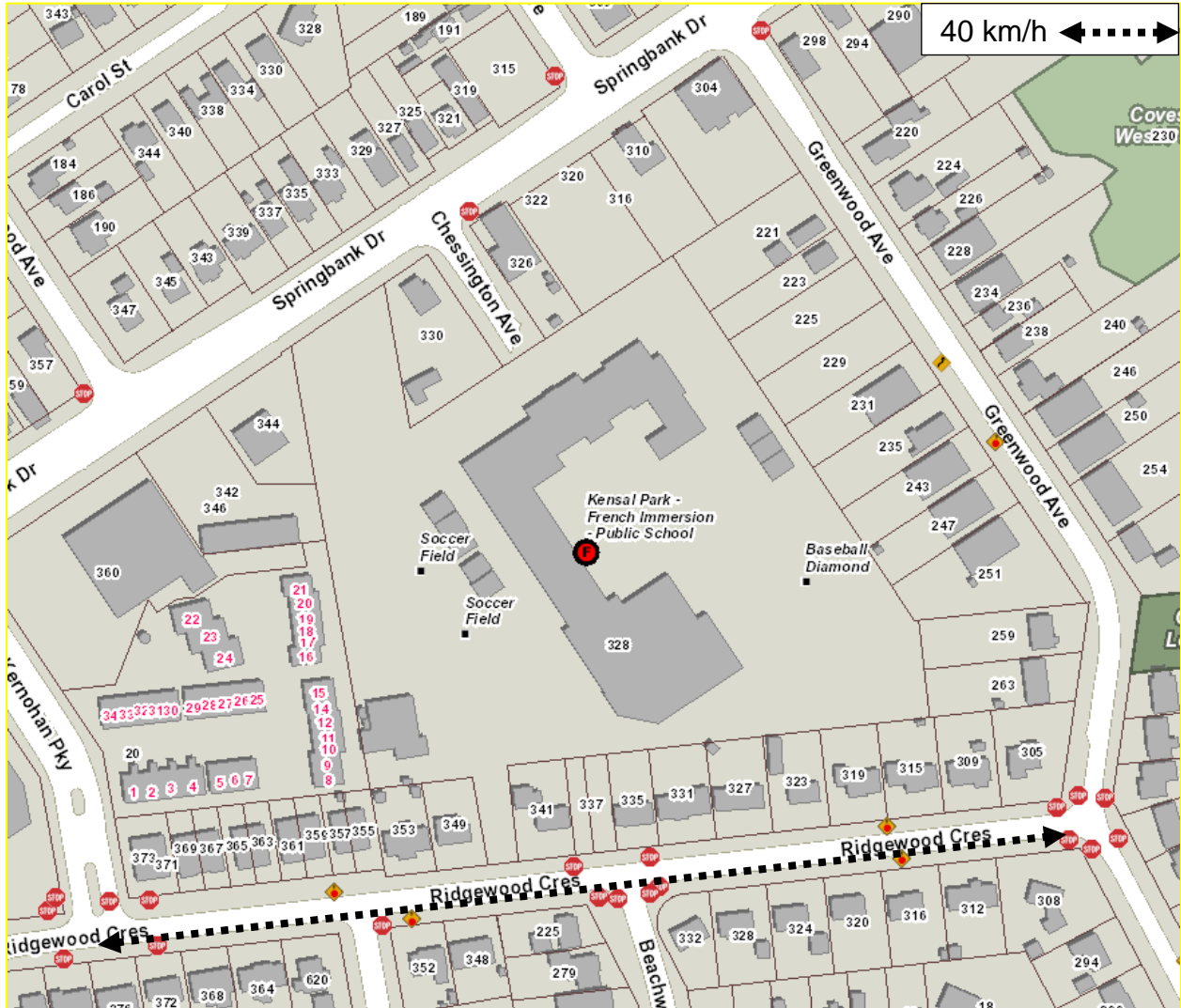


Figure 3: Kensal Park – French Immersion – Public School

Rick Hansen Public School

| | |
|--------------------|--|
| Locust Crescent | Jalna Boulevard (North intersection) to Jalna Boulevard (South intersection) |
| Muriel Crescent | Ernest Avenue (North intersection) to Ernest Avenue (South intersection) |
| Patience Crescent | Ernest Avenue (North intersection) to Ernest Avenue (South intersection) |
| Ponderosa Crescent | Jalna Boulevard (North intersection) to Jalna Boulevard (South intersection) |

It should be noted that Bradley Avenue is classified as an arterial road; therefore, the School Zone Speed Limit does not apply.

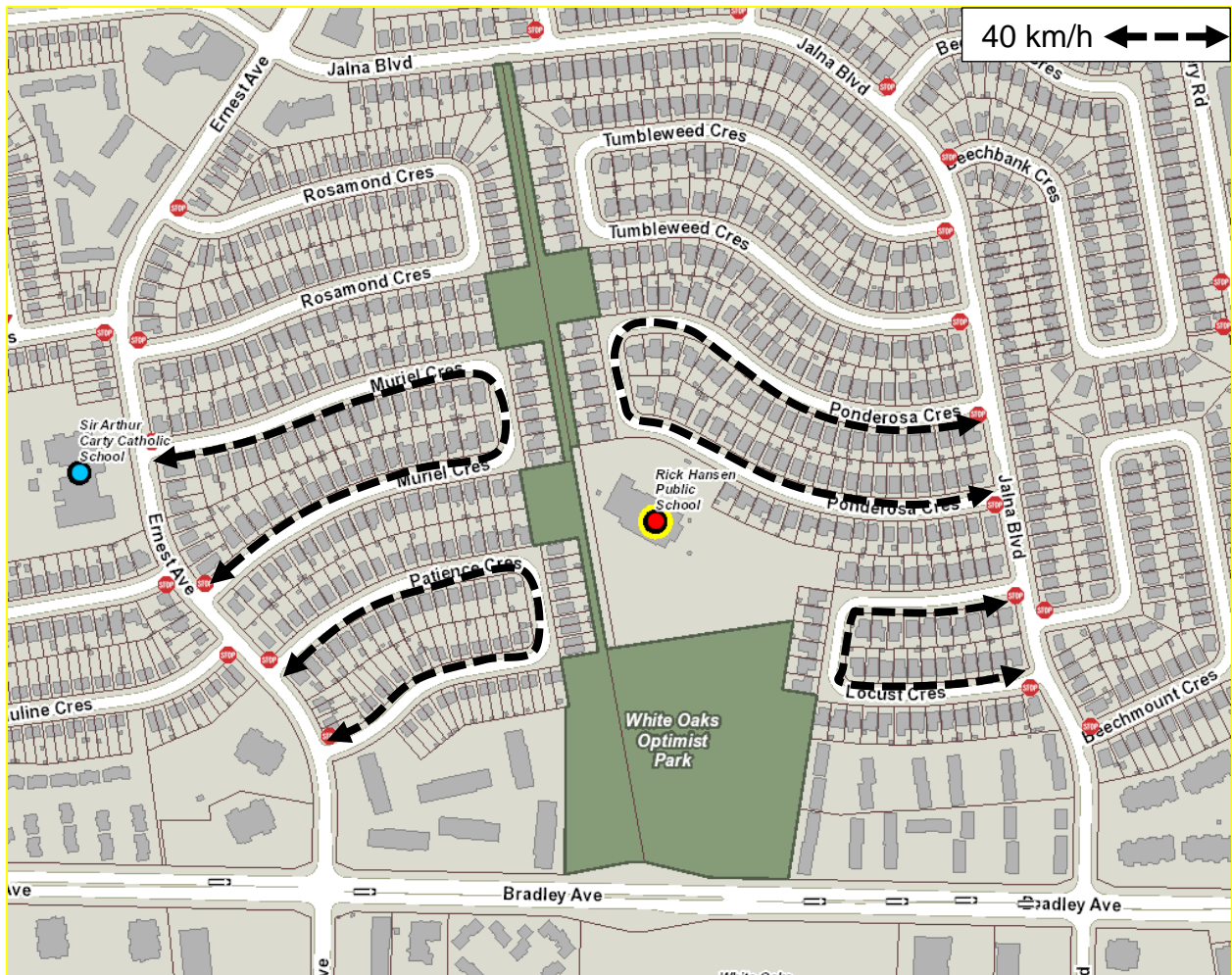


Figure 4: Rick Hansen Public School

St. Marguerite d'Youville Catholic School

Hawthorne Road

Coronation Drive to Sandalwood Crescent (West intersection)

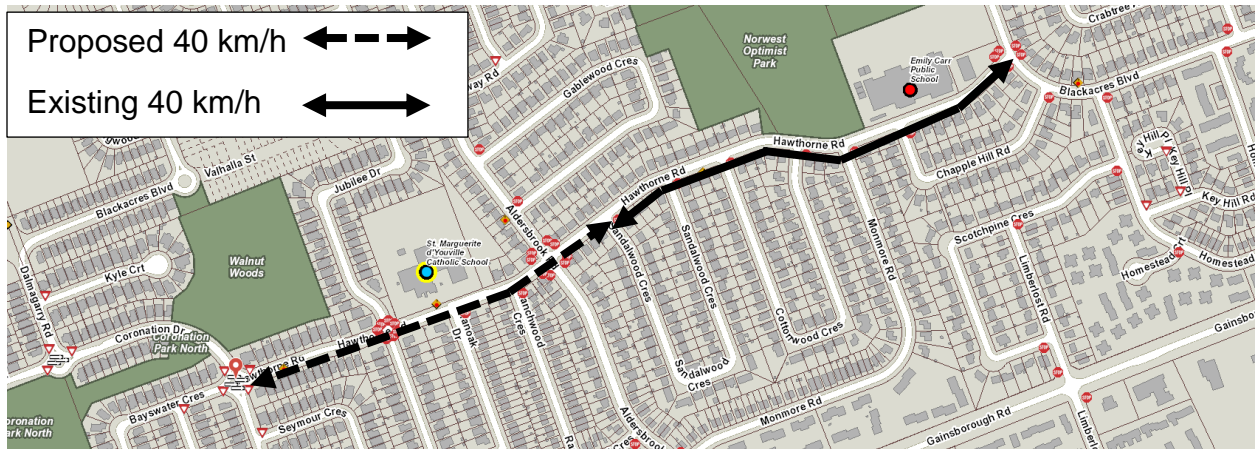


Figure 5: St. Marguerite d'Youville Catholic School

St. Nicholas Catholic School

- Kains Road Jim Allen Way to a point 150 m east of Riverbend Road
- Riverbend Road Kains Road to Shore Road
- Shore Road Westdel Bourne to a point 90m east of Riverbend Road

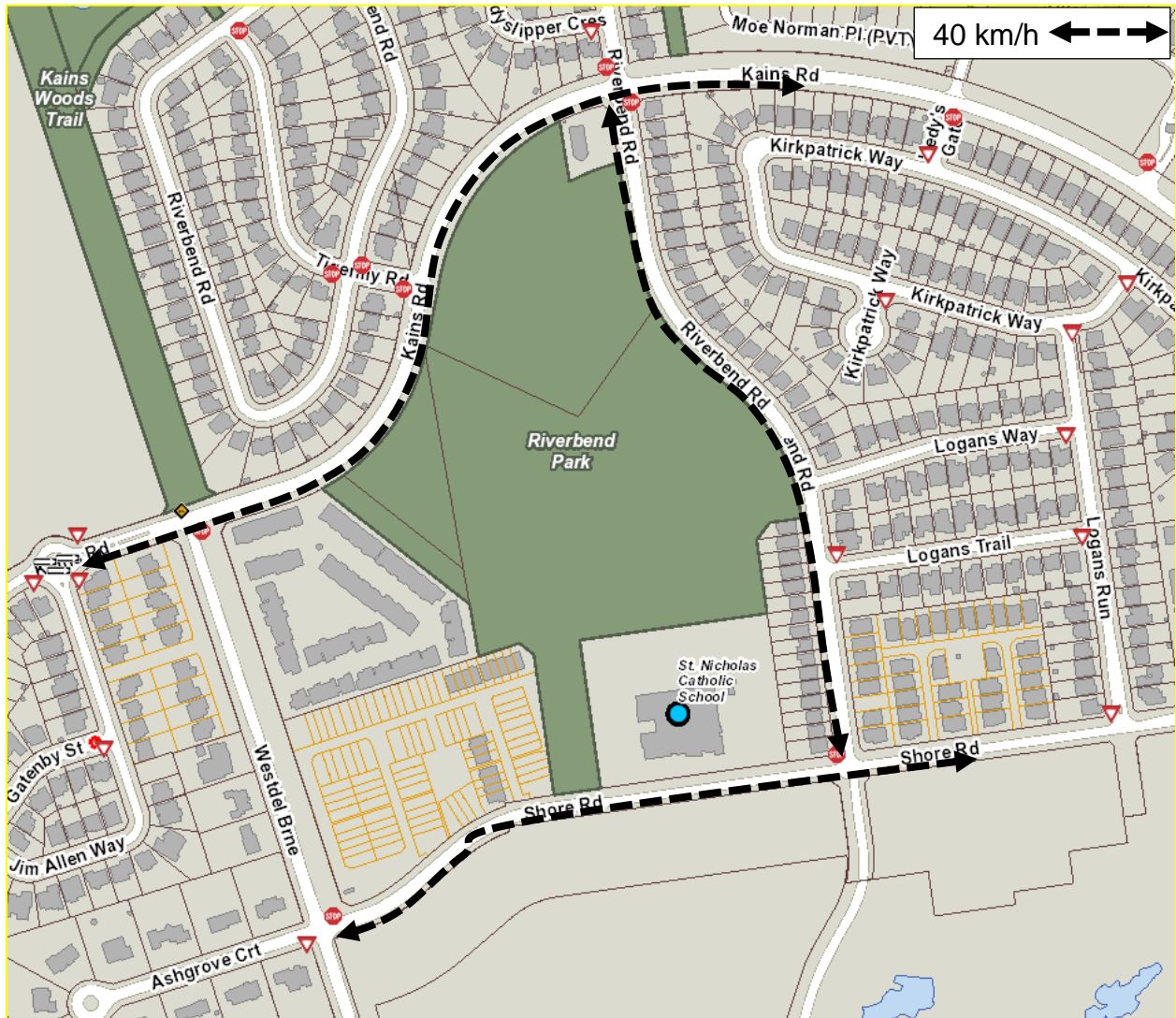


Figure 6: St. Nicholas Catholic School

Woodland Heights Public School

Gardenwood Drive Berkshire Drive to Ridgewood Crescent

Ridgewood Crescent Gardenwood Drive to Kernohan Parkway

It should be noted that Springbank Drive is classified as an arterial road; therefore, the School Zone Speed Limit does not apply.

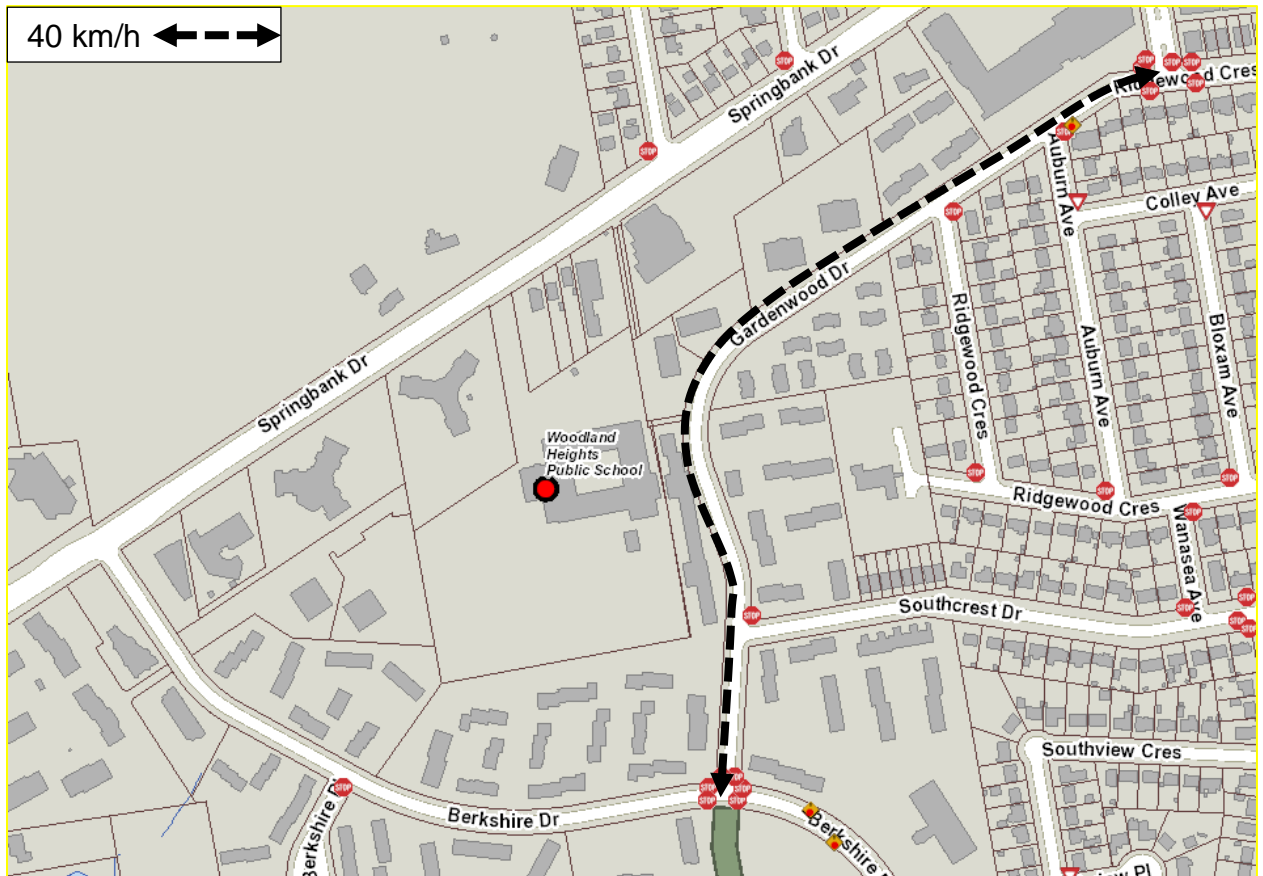


Figure 7: Woodland Heights Public School

An amendment is required to Schedule 17.1 (Lower Speed limits) for the above changes.

ACKNOWLEDGEMENTS:

This report was prepared by Andrea Hamilton, Doug Bolton and Shane Maguire of the Roadway Lighting & Traffic Control Division.

| | |
|---|--|
| PREPARED BY: | REVIEWED & CONCURRED BY: |
| | |
| SHANE MAGUIRE, P. ENG. DIVISION MANAGER, ROADWAY LIGHTING & TRAFFIC CONTROL | EDWARD SOLDI, P.ENG. DIRECTOR, ROADS AND TRANSPORTATION |
| RECOMMENDED BY: | |
| | |
| KELLY SCHERR, P.ENG., MBA, FEC MANAGING DIRECTOR, ENVIRONMENTAL & ENGINEERING SERVICES AND CITY ENGINEER | |

Y:\Shared\Administration\COMMITTEE REPORTS\PS-113 Amendments\2017\2017-12-04\CWC Dec 4 2017 Council Dec 12 2017 (TRAFFIC PARKING BY-LAW AMENDMENTS) Ver. 6.docx

November 27, 2017/ah

Attach: Appendix A: Proposed Traffic & Parking By-Law Amendments

cc. City Solicitor's Office
Parking Office

APPENDIX A

BY-LAW TO AMEND THE TRAFFIC & PARKING BY-LAW (PS-113)

Bill No.

By-law No. PS-113

A by-law to amend By-law PS-113 entitled, "A by-law to regulate traffic and the parking of motor vehicles in the City of London."

WHEREAS subsection 10(2) paragraph 7. Of the *Municipal Act, 2001*, S.O. 2001, c.25, as amended, provides that a municipality may pass by-laws to provide any service or thing that the municipality considers necessary or desirable to the public;

AND WHEREAS subsection 5(3) of the *Municipal Act, 2001*, as amended, provides that a municipal power shall be exercised by by-law;

NOW THEREFORE the Municipal Council of The Corporation of the City of London enacts as follows:

6. Lower Speed Limits

Schedule 17.1 (Lower Speed Limits) of the PS-113 By-law is hereby amended by **deleting** the following rows:

| | | | |
|----------------|----------------------|---------------------|---------|
| Hawthorne Road | Blackacres Boulevard | Sandalwood Crescent | 40 km/h |
|----------------|----------------------|---------------------|---------|

Schedule 17.1 (Lower Speed Limits) of the PS-113 By-law is hereby amended by **adding** the following rows:

| | | | |
|-------------------|--------------------------------------|--|---------|
| Chalfront Road | North limit of Chalfront Road | Hartson Road | 40 km/h |
| Gardenwood Drive | Berkshire Drive | Ridgewood Crescent | 40 km/h |
| Glenora Drive | Glengarry Avenue | A point 304 m west of Glengarry Avenue | 40 km/h |
| Hawthorne Road | Coronation Drive | Blackacres Boulevard | 40 km/h |
| Kains Road | Jim Allen Way | A point 150 m east of Riverbend Road | 40 km/h |
| Locust Crescent | Jalna Boulevard (north intersection) | Jalna Boulevard (south intersection) | 40 km/h |
| Muriel Crescent | Ernest Avenue (north intersection) | Ernest Avenue (south intersection) | 40 km/h |
| Patience Crescent | Ernest Avenue (north intersection) | Ernest Avenue (south intersection) | 40 km/h |

| | | | |
|--------------------|--|--|---------|
| Ponderosa Crescent | Jalna Boulevard (north intersection) | Jalna Boulevard (south intersection) | 40 km/h |
| Ridgewood Crescent | Gardenwood Drive | Greenwood Avenue | 40 km/h |
| Riverbend Road | Kains Road | Shore Road | 40 km/h |
| Santa-Monica Road | Naomee Crescent (south intersection) | South limit of Santa-Monica Road | 40 km/h |
| Shore Road | Westdel Bourne | A point 90 m east of Riverbend Road | 40 km/h |
| Tennent Avenue | Horseshoe Crescent (west intersection) | A point 53 m east of North Vernon Avenue | 40 km/h |

This by-law comes into force and effect on the day it is passed.

PASSED in Open Council on December 12, 2017

Matt Brown
Mayor

Catharine Saunders
City Clerk

First Reading – December 12, 2017

Second Reading –December 12, 2017

Third Reading – December 12, 2017