

Bill No. 674
2017

By-law No. S.- _____

A by-law to lay out, constitute, establish and assume lands in the City of London as public highway. (as widening to Wickerson Road and Southdale Road West)

WHEREAS it is expedient to establish the lands hereinafter described as public highway;

NOW THEREFORE the Municipal Council of The Corporation of the City of London enacts as follows:

1. The lands and premises hereinafter described are laid out, constituted, established and assumed as public highway as widening to Wickerson Road and Southdale Road West, namely:

“Part of Lot 48 in Concession 1, in the geographic Township of Westminster, now in the City of London, County of Middlesex, designated as Parts 1 and 2 on Reference Plan 33R-19784.”

2. This by-law comes into force and effect on the day it is passed.

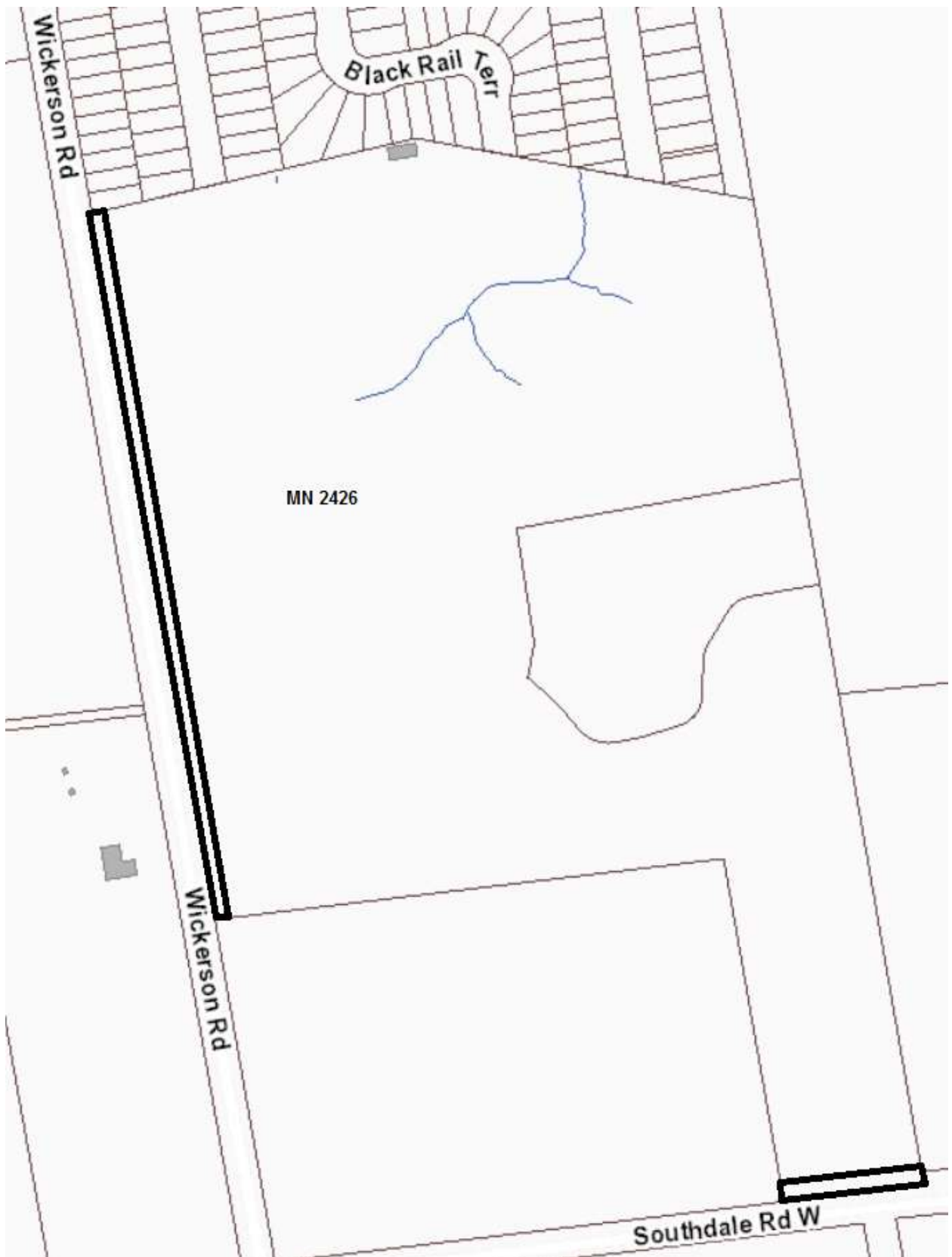
PASSED in Open Council on November 28, 2017.

Matt Brown
Mayor

Catharine Saunders
City Clerk

First Reading – November 28, 2017
Second Reading – November 28, 2017
Third Reading – November 28, 2017

LOCATION MAP



 SUBJECT LANDS