

Appendix 'B'

Combined Sewer Replacement Information



Figure B1: Level of investment for combined sewer separation and SSO mitigation from 2008 to 2017

Table B1: Areas in the City of London with remaining combined sewers

Area	Length (m)	Total Planned for Replacement 2016-2029	Percentage
West End N of Riverside	1,183.9	1,183.9	100 %
Cavendish	834.2	395.3	47.4 %
Old North	4,252	3,394.8	79.8 %
Downtown	3,406	1,818	53.4 %
SoHo	1,453.2	1,453.2	100 %
Old South	1,520.4	561.6	36.9 %
Trevithen	1,181.5	1,009.3	85.4 %
Wheable	1,280.8	1,139.8	89 %
Greenway East Misc.	482.6	482.6	100 %
Vauxhall Misc.	1,823.6	1,561.4	85.6 %
Burbrook Tunnel	3,040.3	3,040.3	100 %
Vauxhall S of Tracks	1,295.6	1,295.6	100 %
TOTAL	21,754.1	17,335.8	79.7 %

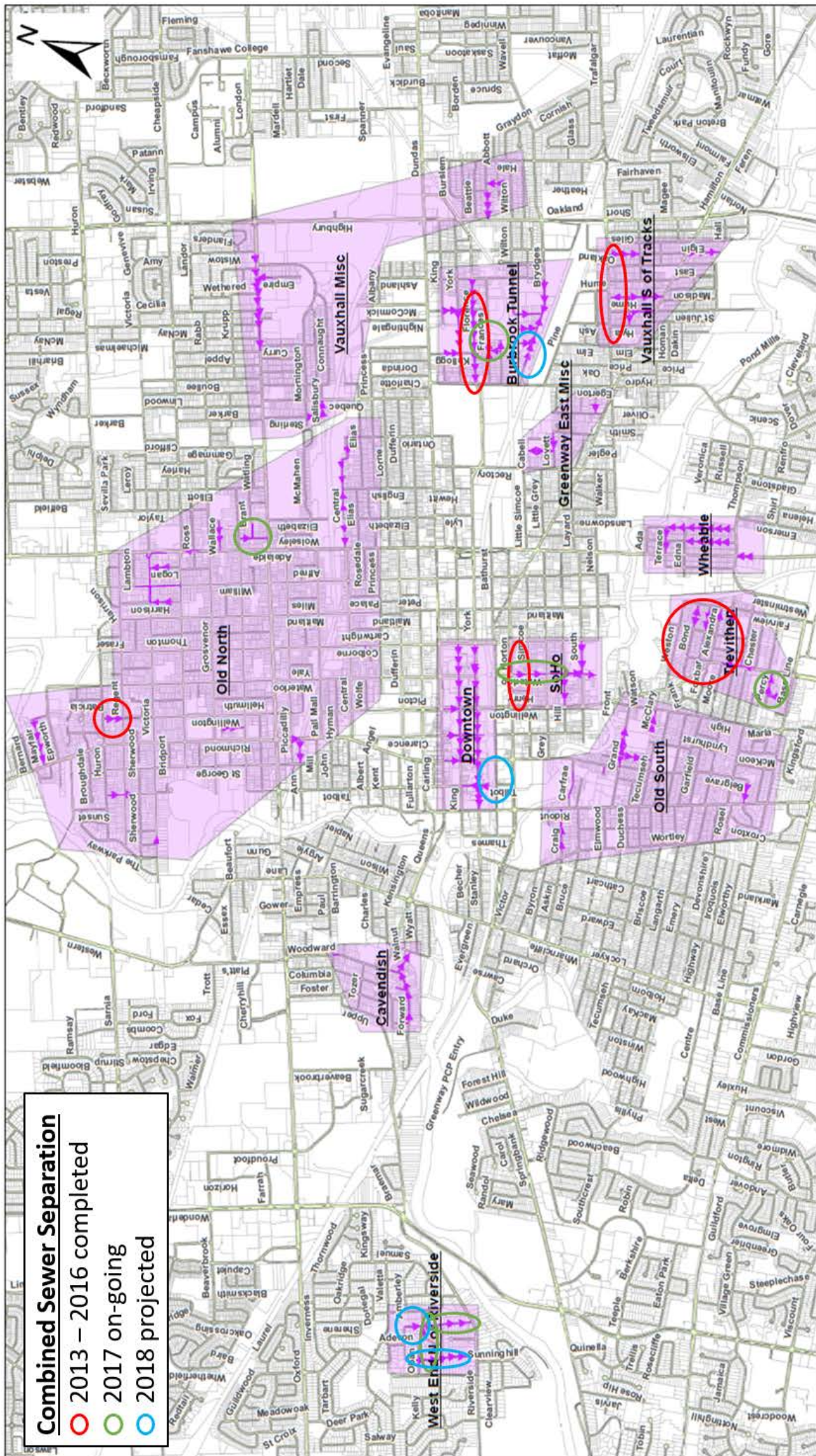


Figure B2: Areas of combined sewers around the City of London that have been replaced since 2013, that are currently being replaced, and that will be replaced in 2018