

<b>TO:</b>	<b>CHAIR AND MEMBERS CIVIC WORKS COMMITTEE MEETING ON NOVEMBER 21, 2017</b>
<b>FROM:</b>	<b>KELLY SCHERR, P. ENG., MBA, FEC MANAGING DIRECTOR, ENVIRONMENTAL &amp; ENGINEERING SERVICES AND CITY ENGINEER</b>
<b>SUBJECT:</b>	<b>AMENDMENTS TO THE TRAFFIC AND PARKING BY-LAW</b>

<b>RECOMMENDATION</b>
-----------------------

That on the recommendation of the Managing Director, Environmental & Engineering Services and City Engineer, the attached proposed by-law (Appendix A) **BE INTRODUCED** at the Municipal Council meeting to be held on November 28, 2017 for the purpose of amending the Traffic and Parking By-law (PS-113).

<b>2015-19 STRATEGIC PLAN</b>
-------------------------------

The following report supports the Strategic Plan through the strategic focus area of **Strengthening Our Community** by improving safety, traffic operations and residential parking needs in London's neighbourhoods.

<b>BACKGROUND</b>
-------------------

The Traffic and Parking By-law (PS-113) requires amendments (Appendix A) to address traffic safety, operations and parking concerns. The following amendments are proposed:

**1. No Stopping**

At the request of local residents, mail-back surveys were sent to the property owners of:

- a) Regis Avenue where the majority of respondents supported the proposed change to implement a No Stopping 8:00 a.m. to 9:00 a.m. and 3:00 p.m. to 4:00 p.m. Monday to Friday September 1<sup>st</sup> to June 30<sup>th</sup> zone on the east side of Regis Avenue;
- b) Regis Place where the majority of respondents supported the proposed change to implement a No Stopping 8:00 a.m. to 9:00 a.m. and 3:00 p.m. to 4:00 p.m. Monday to Friday September 1<sup>st</sup> to June 30<sup>th</sup> zone on the south side of Regis Place;

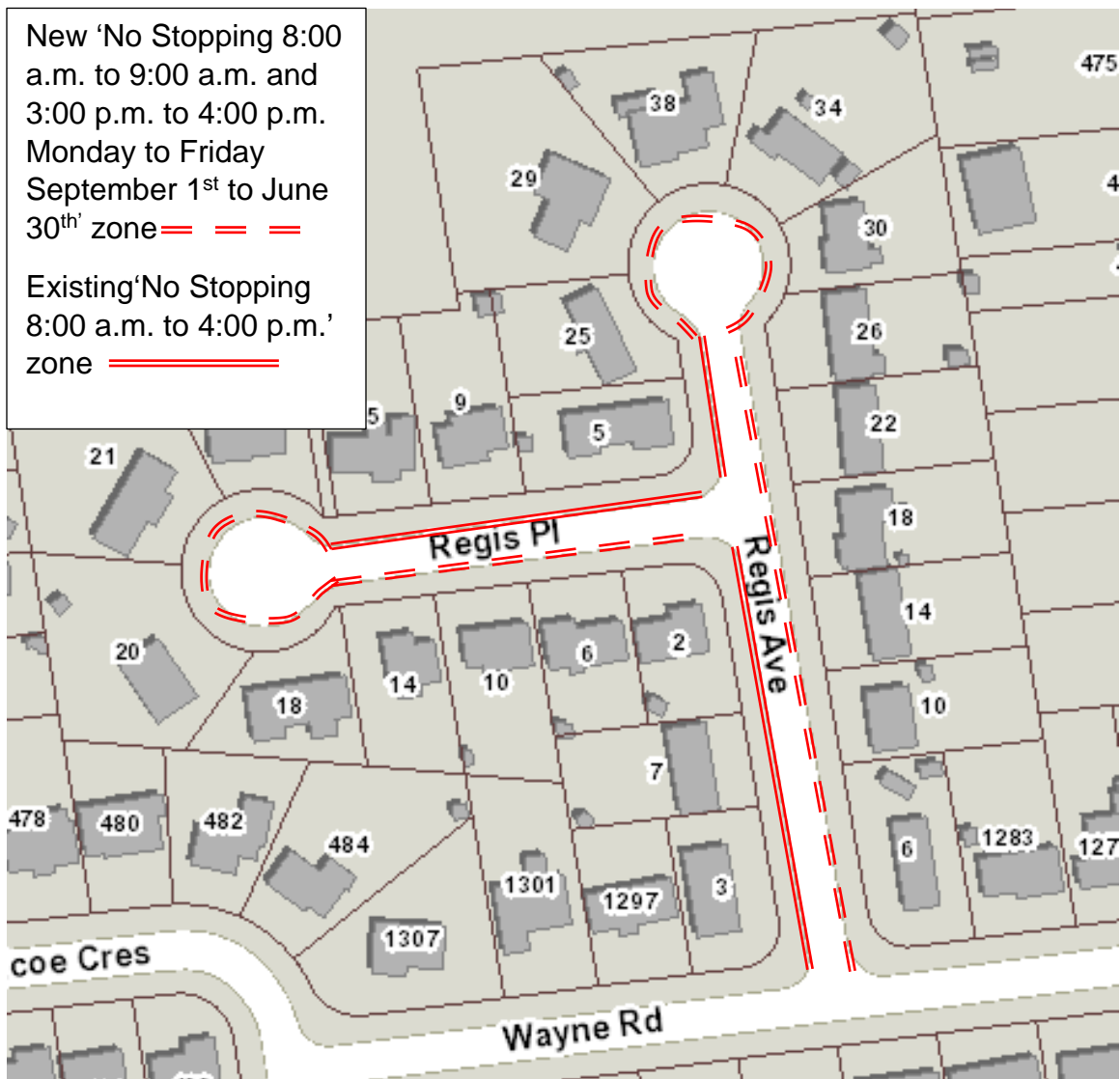


Figure 1: Regis Avenue and Regis Place

An amendment is required to Schedule 1 (No Stopping) for the above changes.

**2. No Parking**

As per the subdivision development agreements, it is recommended to implement No Parking Anytime zones on Buroak Drive west of Denview Avenue opposite parking bays and at curb extensions

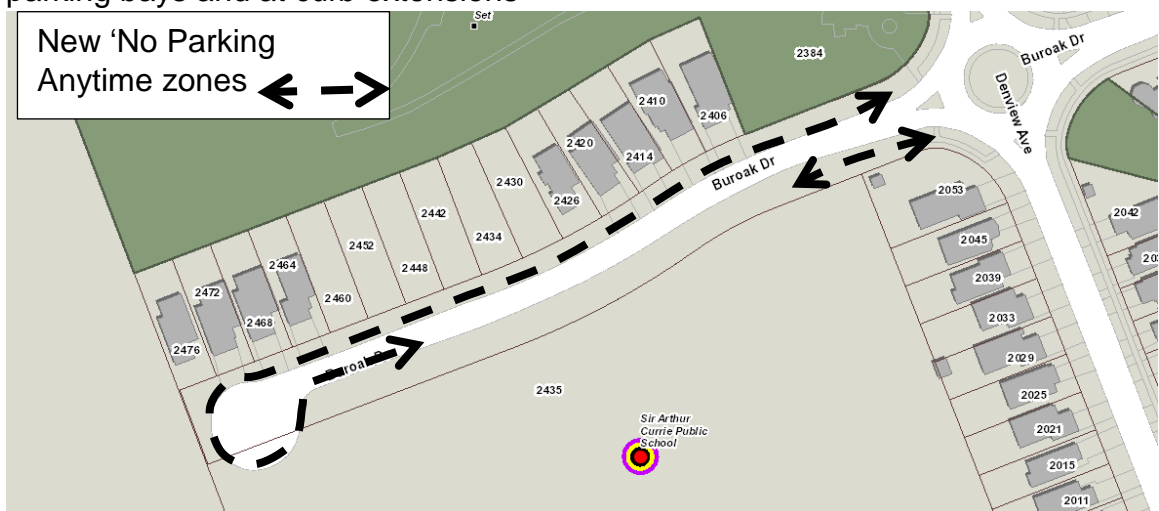


Figure 2: Buroak Drive

An amendment is required to Schedule 2 (No Parking) for the above changes.

### 3. Regulatory Signs

Due to the significant completion of the residential subdivision, it is recommended that Stop and Yield Signs be installed at the following locations:

- Coates Lane at Melsetter Way (north and south intersections);
- Foxcreek Road at Eagletrace Drive; and
- Melsetter Way at Eagletrace Drive (north and south intersections).

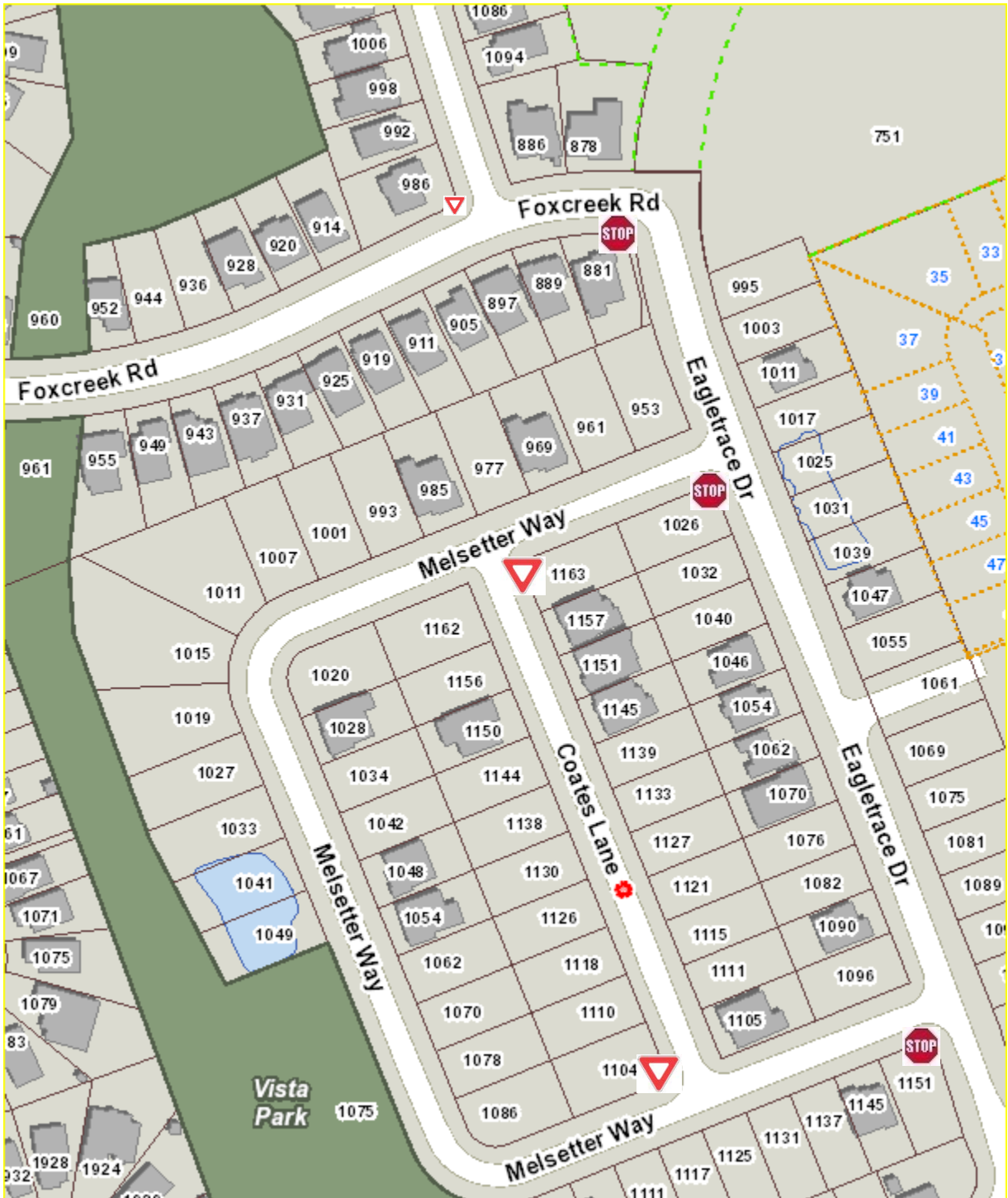


Figure 3: Coates Lane, Foxcreek Road and Melsetter Way

An amendment is required to Schedule 10 (Stop Signs) and Schedule 11 (Yield Signs) for the above changes.

#### 4. Speed Limits

Due to operational and safety concerns it is recommended to reduce the existing posted speed from 80 km/h to 60 km/h on Woodhull Road from south of Lime Kiln Drive to Gideon Drive. This will match the existing 60 km/h posted speed on Woodhull Road from Oxford Street W to south of Lime Kiln Drive

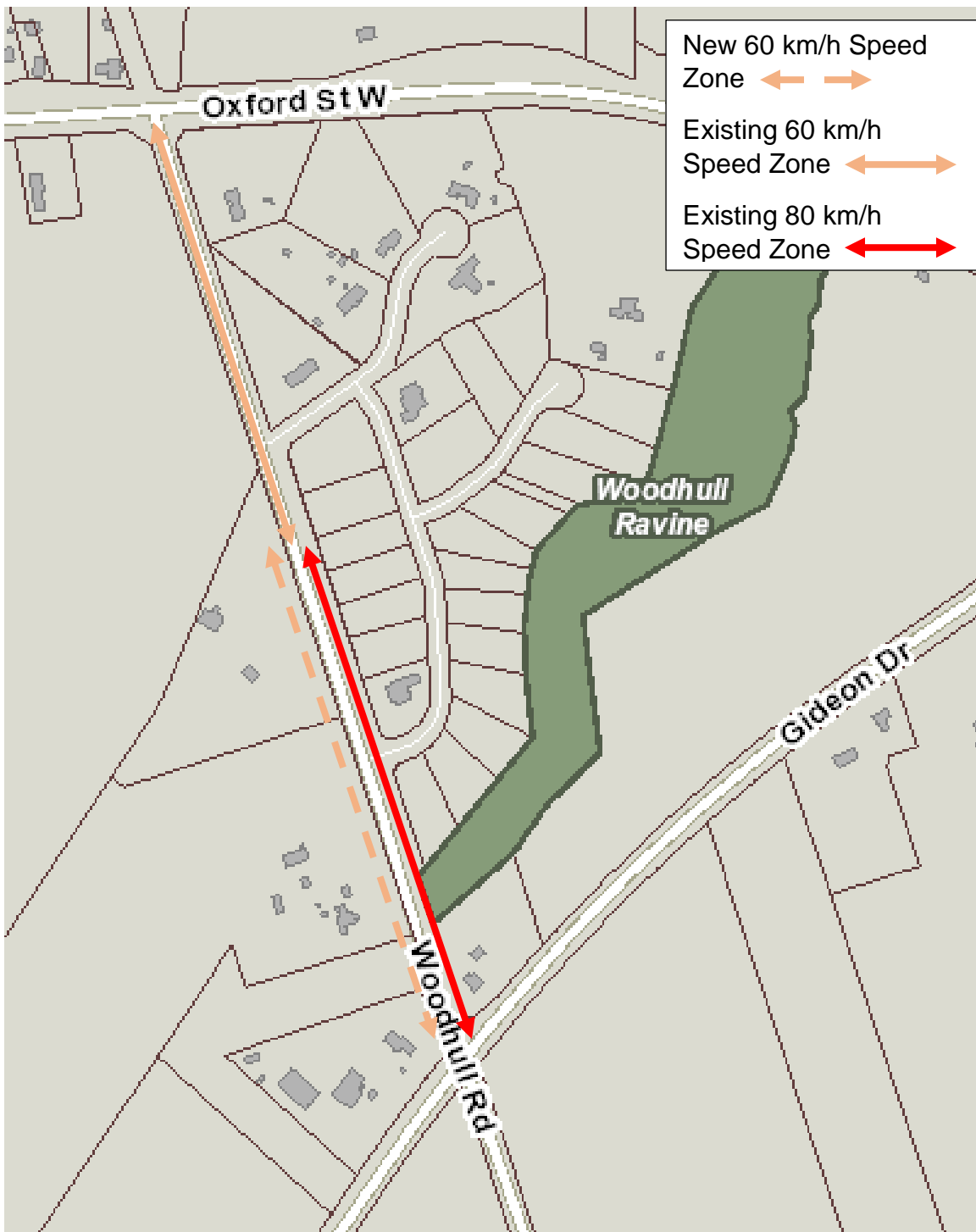


Figure 4: Woodhull Road

An amendment is required to Schedule 17 (Higher Speed Limits) for the above change.

## 5. School Zone Speed Limits

It is recommended that the speed limit be reduced to 40 km/h at the following locations as per the School Zone Speed Limit Policy approved by Council:

### École secondaire catholique Monseigneur-Bruyère

Barker Street                      Huron Street to Monsarrat Avenue

Gatewood Road                  Huron Street to Monsarrat Avenue

It should be noted that Huron Street is classified as an arterial road; therefore, the School Zone Speed Limit does not apply.



Figure 5: École secondaire catholique Monseigneur-Bruyère



Holy Family Catholic School and John P. Roberts Public School

Bow Street

Bancroft Road to Marconi Boulevard

Hudson Drive

Bancroft Road to a point 94 m east of Saddy Avenue

Saddy Avenue

Hudson Drive to Dartmouth Drive

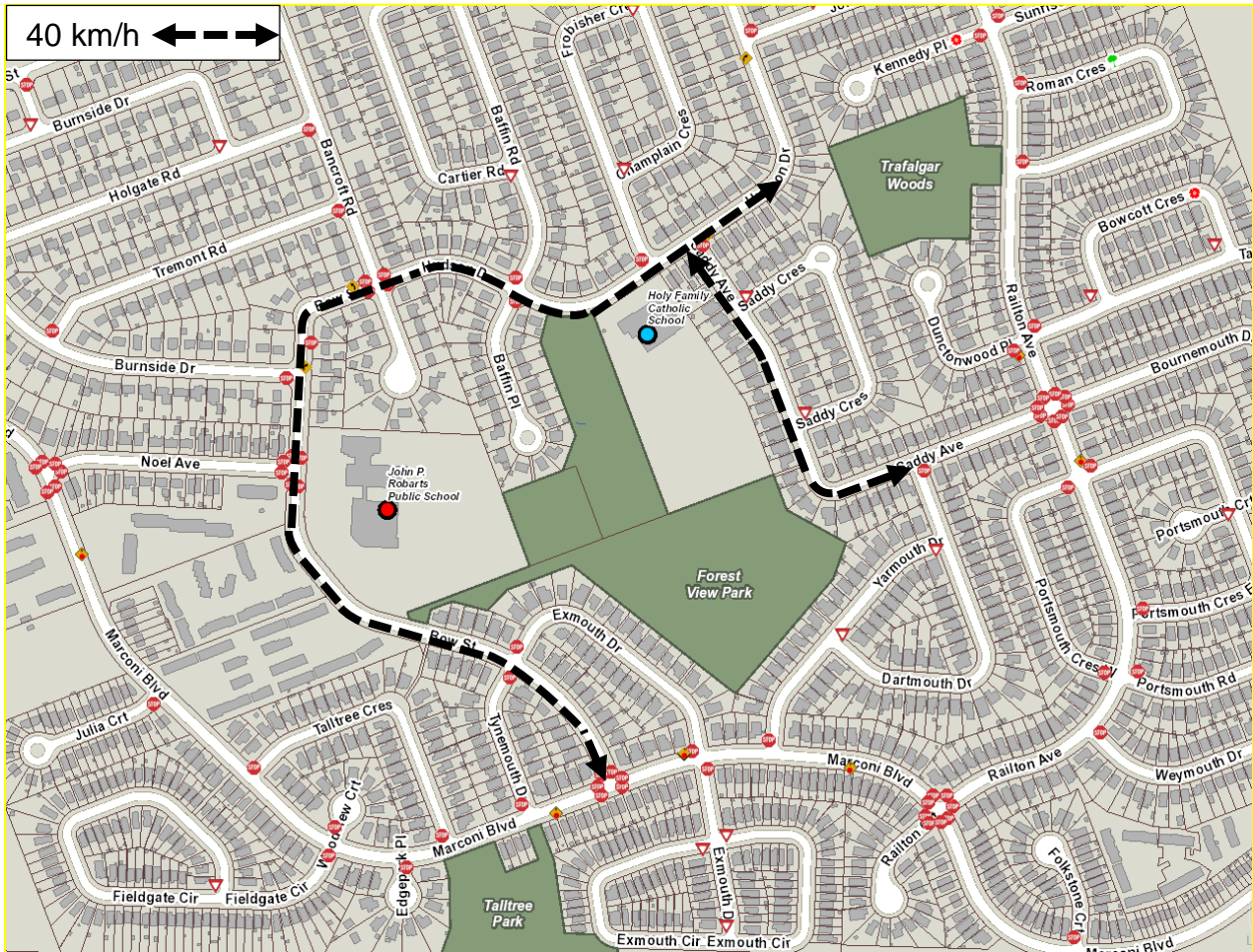


Figure 6: Holy Family Catholic School and John P. Roberts Public School

## Montcalm Secondary School

Jensen Road                      Highbury Avenue N to Webster Street

Webster Street                      Jensen Street to 60 m north of Bentley Drive

It should be noted that Highbury Avenue N is classified as an arterial road; therefore, the School Zone Speed Limit does not apply.

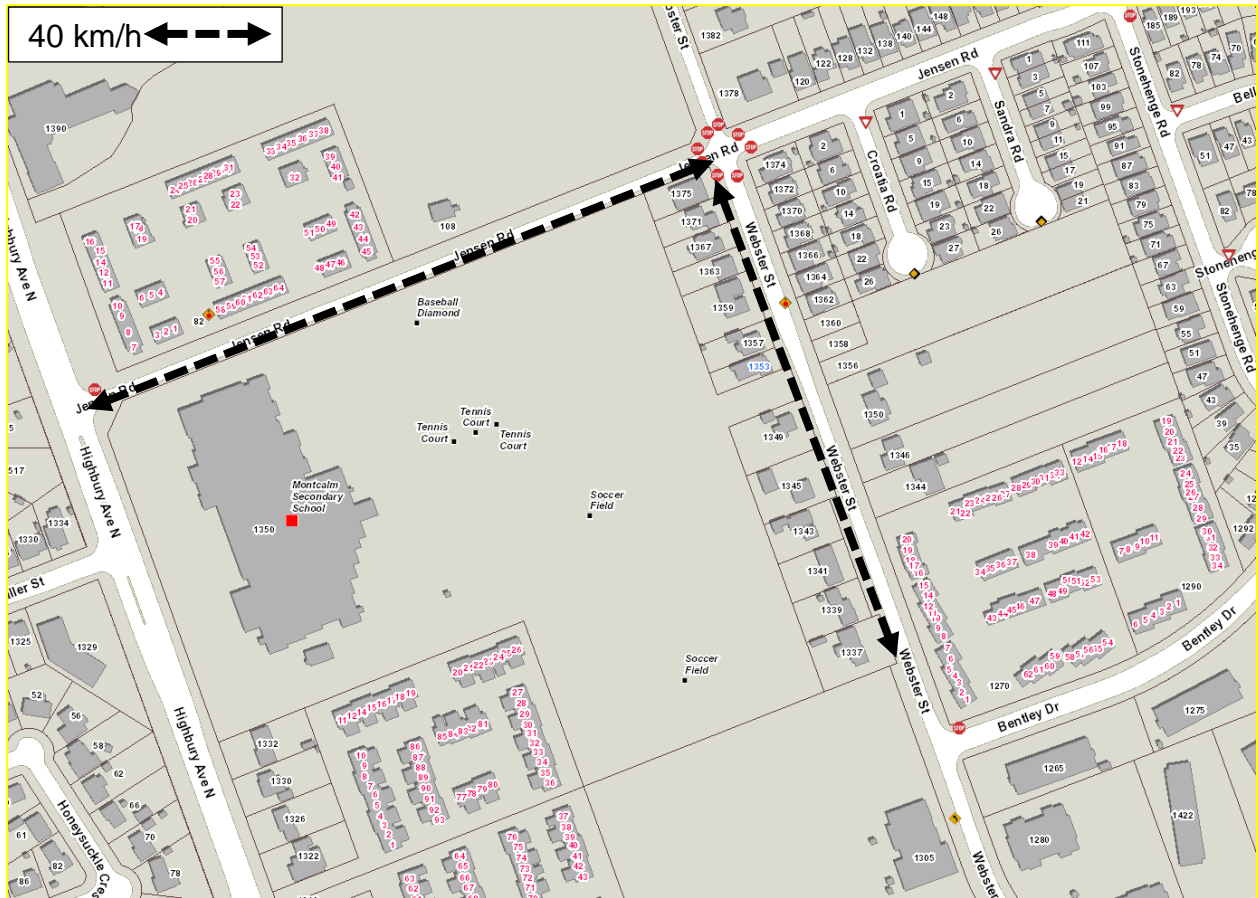


Figure 7: Montcalm Secondary School

Princess Elizabeth – French Immersion – Public School

Thompson Road

A point 150 m west of Adelaide Street to a point 86 m east of Emerson Avenue

It should be noted that Adelaide Street S is classified as an arterial road; therefore, the School Zone Speed Limit does not apply.

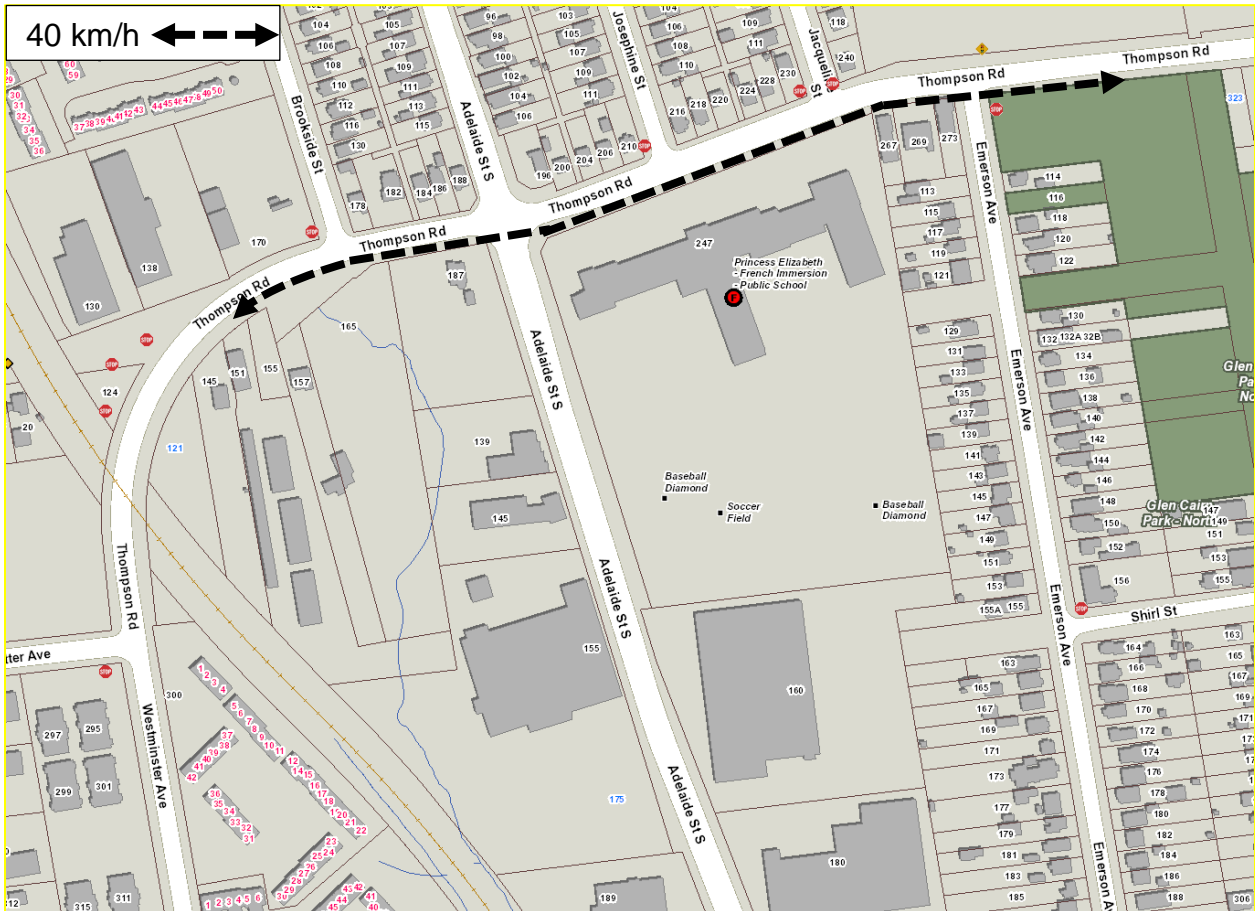


Figure 8: Princess Elizabeth – French Immersion – Public School



Sir Arthur Currie Public School

Buroak Drive

West limit to 110 M east of Denview Avenue

Silverfox Crescent

Silverfox Drive (south intersection) to Silverfox Drive (north intersection)

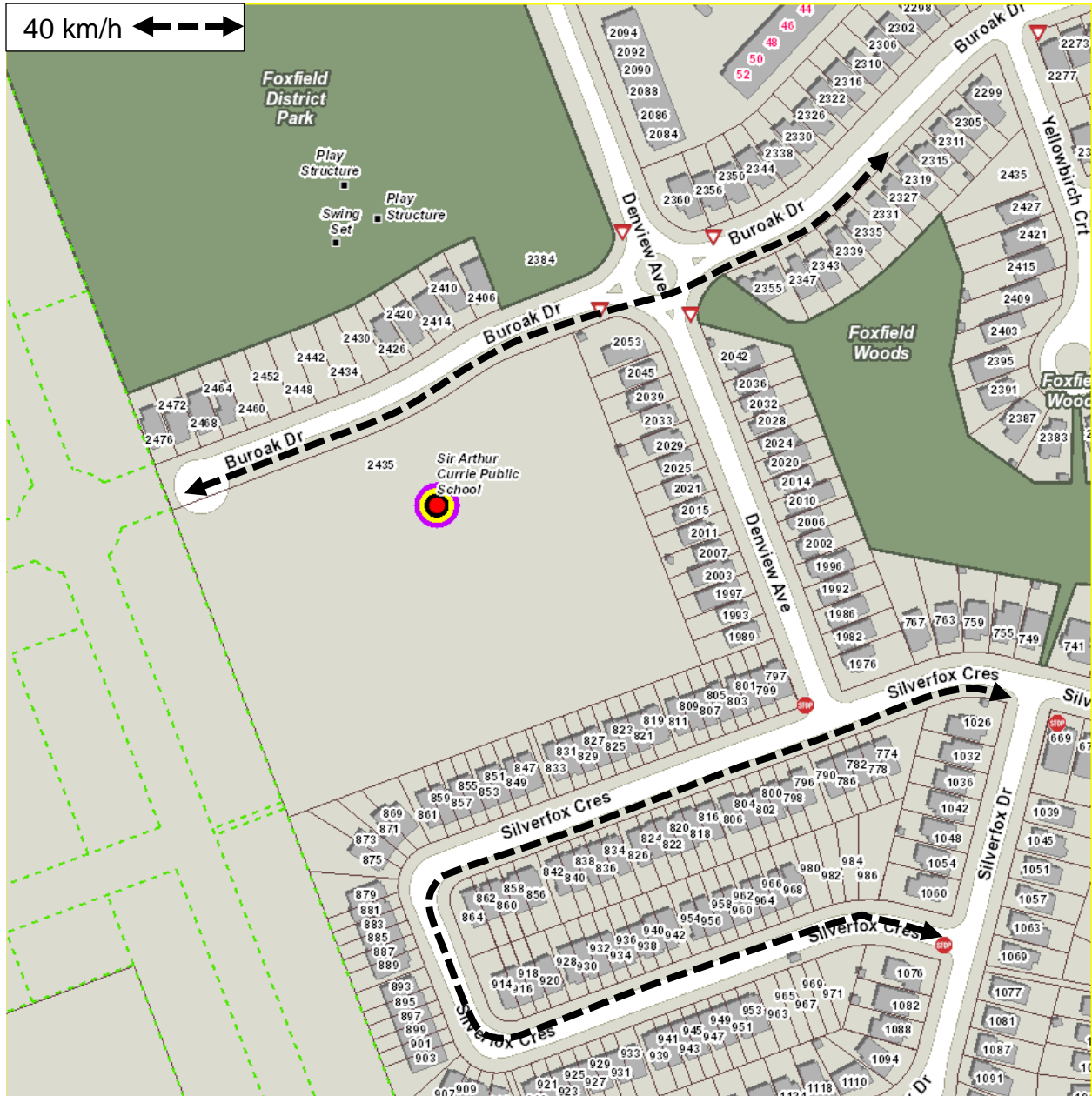


Figure 9: Sir Arthur Currie Public School

An amendment is required to Schedule 17.1 (Lower Speed limits) for the above changes.

**6. Off-Street Municipal Parking Lots**

Schedules 22 and 24 of the Traffic and Parking By-law contain maps of the location of each off-street municipal parking lot. An amendment is required to replace the maps in Schedule 22 (Metered Off-street Municipal Parking Lots) and Schedule 24 (Un-metered Off-street Municipal Parking Lots) with new maps so that the information is provided in a clear and consistent manner.

**ACKNOWLEDGEMENTS:**

This report was prepared by Andrea Hamilton, Doug Bolton and Shane Maguire of the Roadway Lighting & Traffic Control Division.

<b>PREPARED BY:</b>	<b>REVIEWED &amp; CONCURRED BY:</b>
<b>SHANE MAGUIRE, P. ENG. DIVISION MANAGER, ROADWAY LIGHTING &amp; TRAFFIC CONTROL</b>	<b>EDWARD SOLDI, P.ENG. DIRECTOR, ROADS AND TRANSPORTATION</b>
<b>RECOMMENDED BY:</b>	
<b>KELLY SCHERR, P.ENG., MBA, FEC MANAGING DIRECTOR, ENVIRONMENTAL &amp; ENGINEERING SERVICES AND CITY ENGINEER</b>	

Y:\Shared\Administration\COMMITTEE REPORTS\PS-113 Amendments\2017\2017-11-21\CWC Nov 21 2017 Council Nov 28 2017 (TRAFFIC PARKING BY-LAW AMENDMENTS) Ver 4.docx

November 1, 2017/sm

Attach: Appendix A: Proposed Traffic & Parking By-Law Amendments

cc. City Solicitor's Office  
Parking Office

**APPENDIX A**

**BY-LAW TO AMEND THE TRAFFIC & PARKING BY-LAW (PS-113)**

Bill No.  
2017

By-law No. PS-113-

A by-law to amend By-law No. PS-113, entitled,  
“A by-law to regulate traffic and the parking of  
motor vehicles in the City of London.”

WHEREAS subsection 10(2) paragraph 7. of the *Municipal Act, 2001*, S.O. 2001, c.25, as amended, provides that a municipality may pass by-laws to provide any service or thing that the municipality considers necessary or desirable to the public;

AND WHEREAS subsection 5(3) of the *Municipal Act, 2001*, as amended, provides that a municipal power shall be exercised by by-law;

NOW THEREFORE the Municipal Council of The Corporation of the City of London enacts as follows:

**1. No Stopping**

Schedule 1 (No Stopping) of the PS-113 By-law is hereby amended by **adding** the following rows:

Regis Avenue	East, North and West	Wayne Road	North limit of Regis Avenue	8:00 a.m. to 9:00 a.m. and 3:00 p.m. to 4:00 p.m. Monday to Friday September 1 <sup>st</sup> to June 30 <sup>th</sup>
Regis Place	South, West and North	Regis Avenue	West limit of Regis Place	8:00 a.m. to 9:00 a.m. and 3:00 p.m. to 4:00 p.m. Monday to Friday September 1 <sup>st</sup> to June 30 <sup>th</sup>

**2. No Parking**

Schedule 2 (No Parking) of the PS-113 By-law is hereby amended by **adding** the following rows:

Buroak Drive	North	Denview Avenue	West limit of Buroak Drive	Anytime
--------------	-------	----------------	-------------------------------	---------

Buroak Drive	South	Denview Avenue	A point 55 m west of Denview Avenue	Anytime
Buroak Drive	South	A 162 m west of Denview Avenue	West limit of Denview Avenue	Anytime

**3. Stop Sign Locations**

Schedule 10 (Stop Signs) of the PS-113 By-law is hereby amended by **adding** the following rows:

Eastbound	Foxcreek Road	Eagletrace Drive
Eastbound	Melsetter Way	Eagletrace Drive (north intersection)
Eastbound	Melsetter Way	Eagletrace Drive (south intersection)

**4. Yield Sign Locations**

Schedule 11 (Yield Signs) of the PS-113 By-law is hereby amended by **adding** the following rows:

Northbound	Coates Lane	Melsetter Way (north intersection)
Southbound	Coates Lane	Melsetter Way (south intersection)

**5. Higher Speed Limits**

Schedule 17 (Higher Speed Limits) of the PS-113 By-law is hereby amended by **deleting** the following rows:

Woodhull Road	Oxford Street W	A point 100 m south of Lime Kiln Road	60 km/h
Woodhull Road	A point 100 m south of Lime Kiln Road	A point 200 m North of Elviage Road	80 km/h

Schedule 17 (Higher Speed Limits) of the PS-113 By-law is hereby amended by **adding** the following rows:

Woodhull Road	Oxford Street W	Gideon Drive	60 km/h
Woodhull Road	Gideon Drive	A point 200 m North of Elviage Road	80 km/h

**6. Lower Speed Limits**

Schedule 17.1 (Lower Speed Limits) of the PS-113 By-law is hereby amended by **adding** the following rows:

Barker Street	Huron Street	Monsarrat Avenue	40 km/h
Bow Street	Bancroft Road	Marconi Boulevard	40 km/h
Buroak Drive	West limit of Buroak Drive	A point 110 m east of Denview Avenue	40 km/h
Gatewood Boulevard	Huron Street	Monsarrat Avenue	40 km/h
Hudson Drive	Bancroft Road	A point 94 m east of Saddy Avenue	40 km/h
Jensen Road	Highbury Avenue	Webster Street	40 km/h
Thompson Road	A point 150 m west of Adelaide Street S	A point 86 m east of Emerson Avenue	40 km/h
Saddy Avenue	Hudson Drive	Dartmouth Drive	40 km/h
Silverfox Crescent	Silverfox Drive (south intersection)	Silverfox Drive (north intersection)	40 km/h
Webster Street	Jensen Street	A point 60 m north of Bentley Drive	40 km/h

**7. Metered Off-Street Municipal Parking Lots**

Schedule 22 (Metered Off-Street Municipal Parking Lots) of the PS-113 By-law is hereby deleted in its entirety and replaced with the attached new Schedule 22.

**8. Un-metered Off-Street Municipal Parking Lots**

Schedule 24 (Un-metered Off-Street Municipal Parking Lots) of the PS-113 By-law is hereby deleted in its entirety and replaced with the attached new Schedule 24.



9. This by-law comes into force and effect on the day it is passed.

PASSED in Open Council on November 28, 2017.

Matt Brown  
Mayor

Catharine Saunders  
City Clerk

First Reading – November 28, 2017  
Second Reading – November 28, 2017  
Third Reading – November 28, 2017