

**4TH REPORT OF THE**  
**TREES AND FORESTS ADVISORY COMMITTEE**

Meeting held on April 22, 2015, commencing at 12:22 PM, in Committee Room #4, Second Floor, London City Hall.

**PRESENT:** A. Cantel (Acting Chair), P. Ciufu, C. Haindl, I. Kalsi, J. Kogelheide, G. Mitchell and J. Martin (Secretary).

**ABSENT:** A. Adgria, C. Linton and R. Mannella.

**ALSO PRESENT:** I. Listar, S. Mathers and S. Rowland.

**I. CALL TO ORDER**

1. Disclosures of Pecuniary Interest

Recommendation: That it **BE NOTED** that no pecuniary interests were disclosed.

**II. ORGANIZATIONAL MATTERS**

2. Committee Orientation

Recommendation: That it **BE NOTED** that the Accessibility for Ontarians with Disabilities Act (AODA) Integrated Accessibility Standards orientation from J. Martin, Secretary was received.

**III. SCHEDULED ITEMS**

3. Planting Trees Near Stormwater Management Facilities

Recommendation: That it **BE NOTED** that the attached presentation from S. Mathers, Manager, Stormwater Management, with respect to planting trees near stormwater management facilities, was received.

4. Urban Forest Strategy

Recommendation: That it **BE NOTED** that the attached presentation from I. Listar, Manager, Urban Forestry, with respect to the Urban Forest Strategy, was received.

**IV. CONSENT ITEMS**

5. 3rd Report of the Trees and Forests Advisory Committee

Recommendation: That it **BE NOTED** that the 3rd Report of the Trees and Forests Advisory Committee, from its meeting held on March 25, 2015, was received.

6. Appointments to the Trees and Forests Advisory Committee

Recommendation: That it **BE NOTED** that the Municipal Council resolution adopted at its meeting held on March 31, 2015, with respect to the appointments to the Trees and Forests Advisory Committee for the term ending February 28, 2019, was received.

**V. SUB-COMMITTEES & WORKING GROUPS**

7. Climate Change/Allergens/Invasives Working Group

Recommendation: That it **BE NOTED** that the Trees and Forests Advisory Committee received a verbal update from A. Cantell, with respect to the Climate Change/Allergens/Invasives Working Group.

**VI. ITEMS FOR DISCUSSION**

None.

**VII. DEFERRED MATTERS/ADDITIONAL BUSINESS**

8. Urban Design and GIS and Downtown Design Manuals

Recommendation: That it **BE NOTED** that the members of the Trees and Forests Advisory Committee were encouraged to provide comments with respect to the Urban Design and GIS and Downtown Design Manuals to A. Cantell for submission to the Civic Administration for consideration.

**VIII. ADJOURNMENT**

The meeting adjourned at 2:45 PM.

Next Meeting Date: May 27, 2015 at 12:15 PM
---

# Trees and Forests Advisory Committee: Planting Near Stormwater Ponds



# Stormwater Management in London

## What is a Stormwater Pond?

- Ponds gather surface water generated from rainfall to help reduce the possibility of flooding and provide treatment of the water.
- Ponds include a combination of landscaped and structural features, to slow and filter stormwater runoff.



## Who Builds them?

- New ponds are constructed by the City.
- Older areas may have ponds that are still the responsibility of the developer.



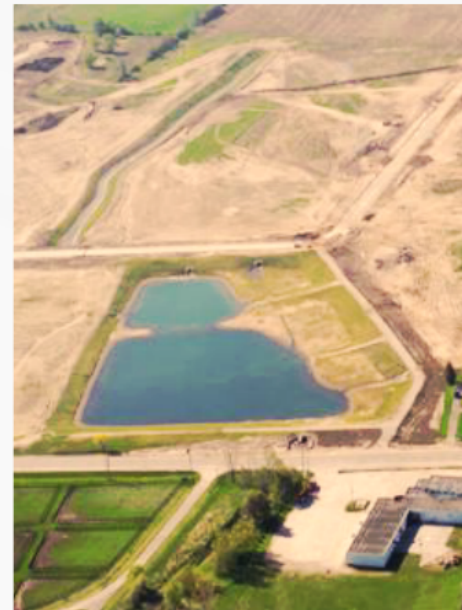
## Community and Natural Amenity

- Not just an engineered structure.
- Ponds have a landscaping plan created by a Landscape Architect and signed off by the City Ecologist.
- Needs to be something you'd like to live beside.



# What is a Stormwater Pond?

- Ponds gather surface water generated from rainfall to help reduce the possibility of flooding and provide treatment of the water.
- Ponds include a combination of landscaped and structural features, to slow and filter stormwater runoff.



# Who Builds them?

- New ponds are constructed by the City.
- Older areas may have ponds that are still the responsibility of the developer.

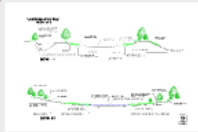


# Community and Natural Amenity

- Not just an engineered structure.
- Ponds have a landscaping plan created by a Landscape Architect and signed off by the City Ecologist.
- Needs to be something you'd like to live beside.

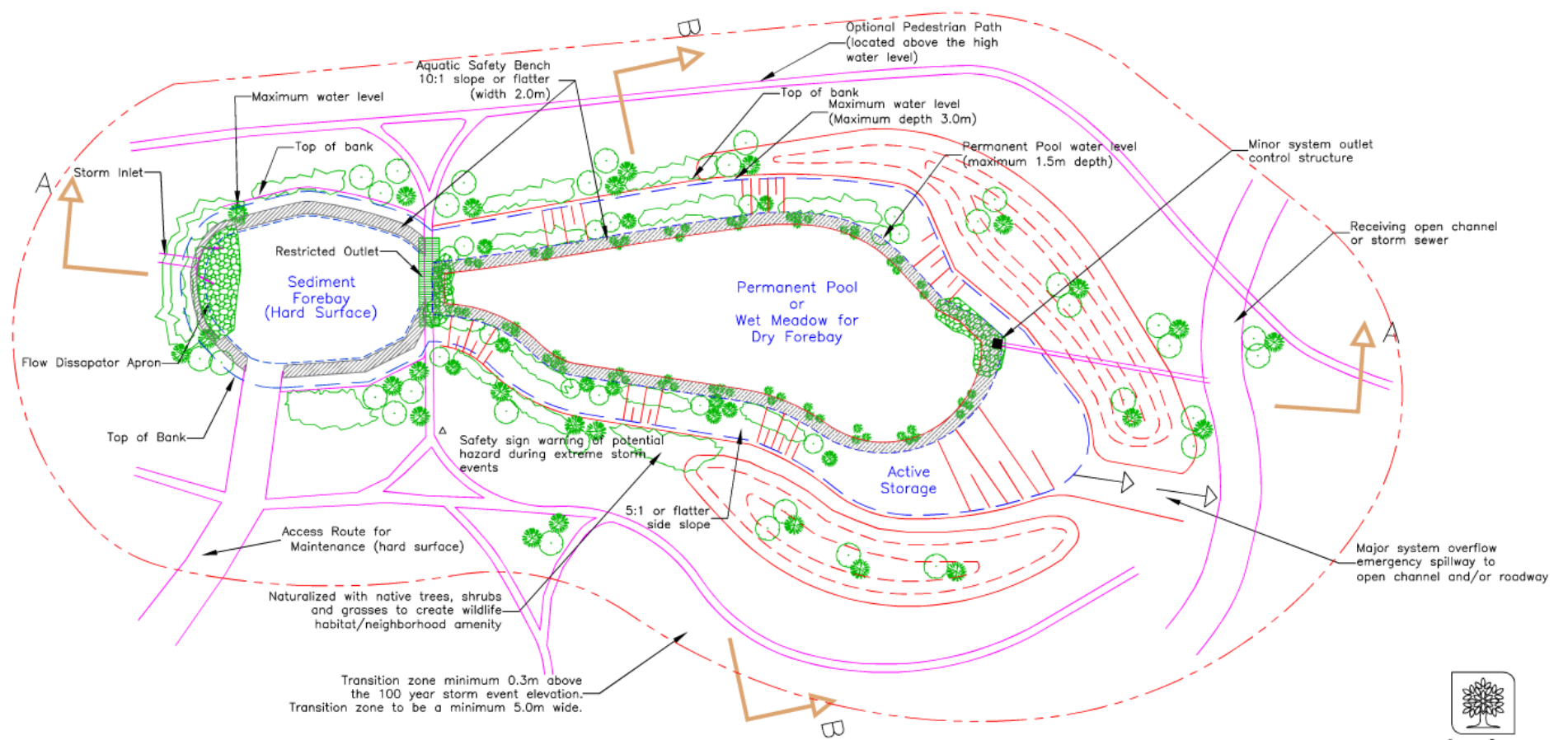


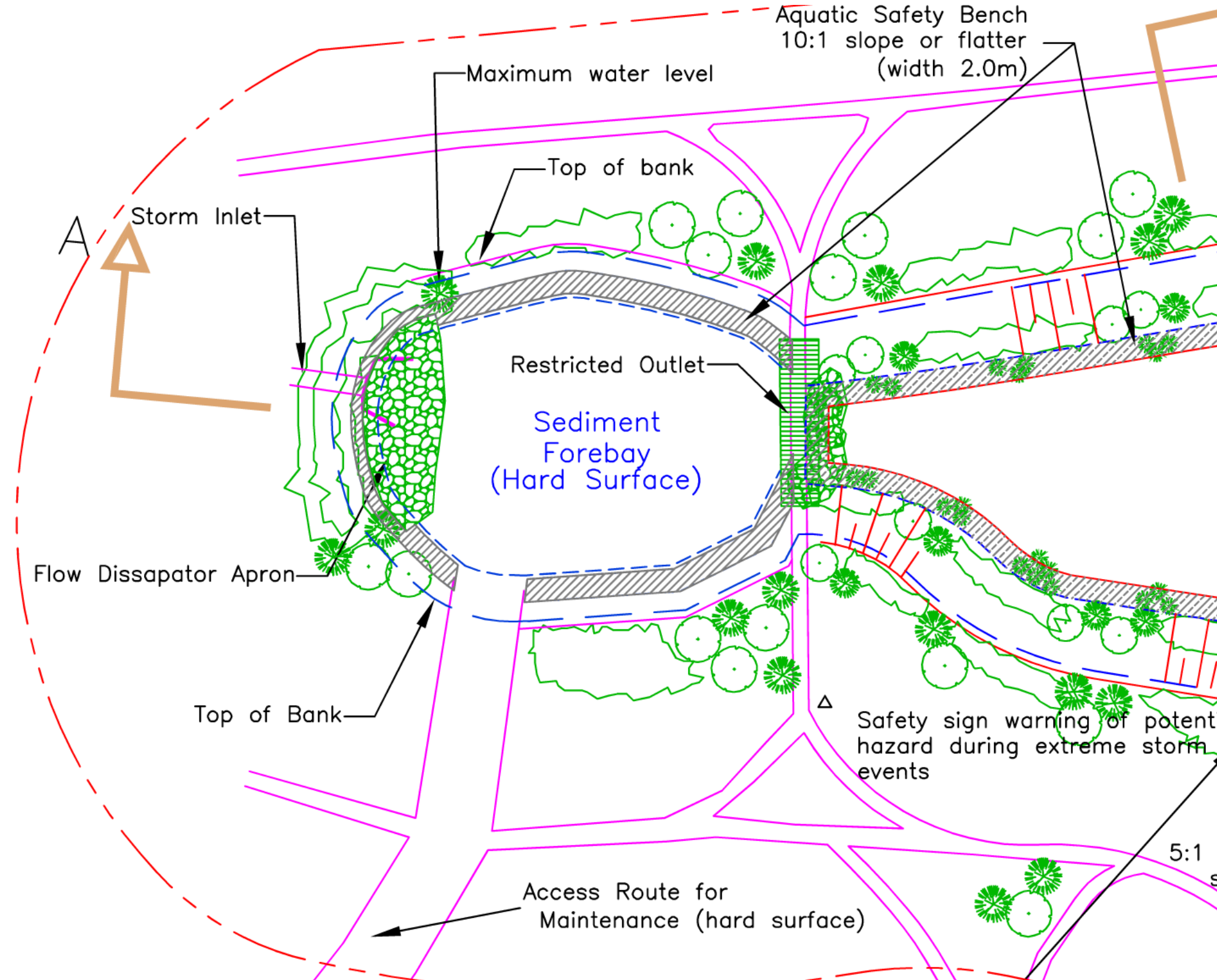
# Stormwater Pond Design

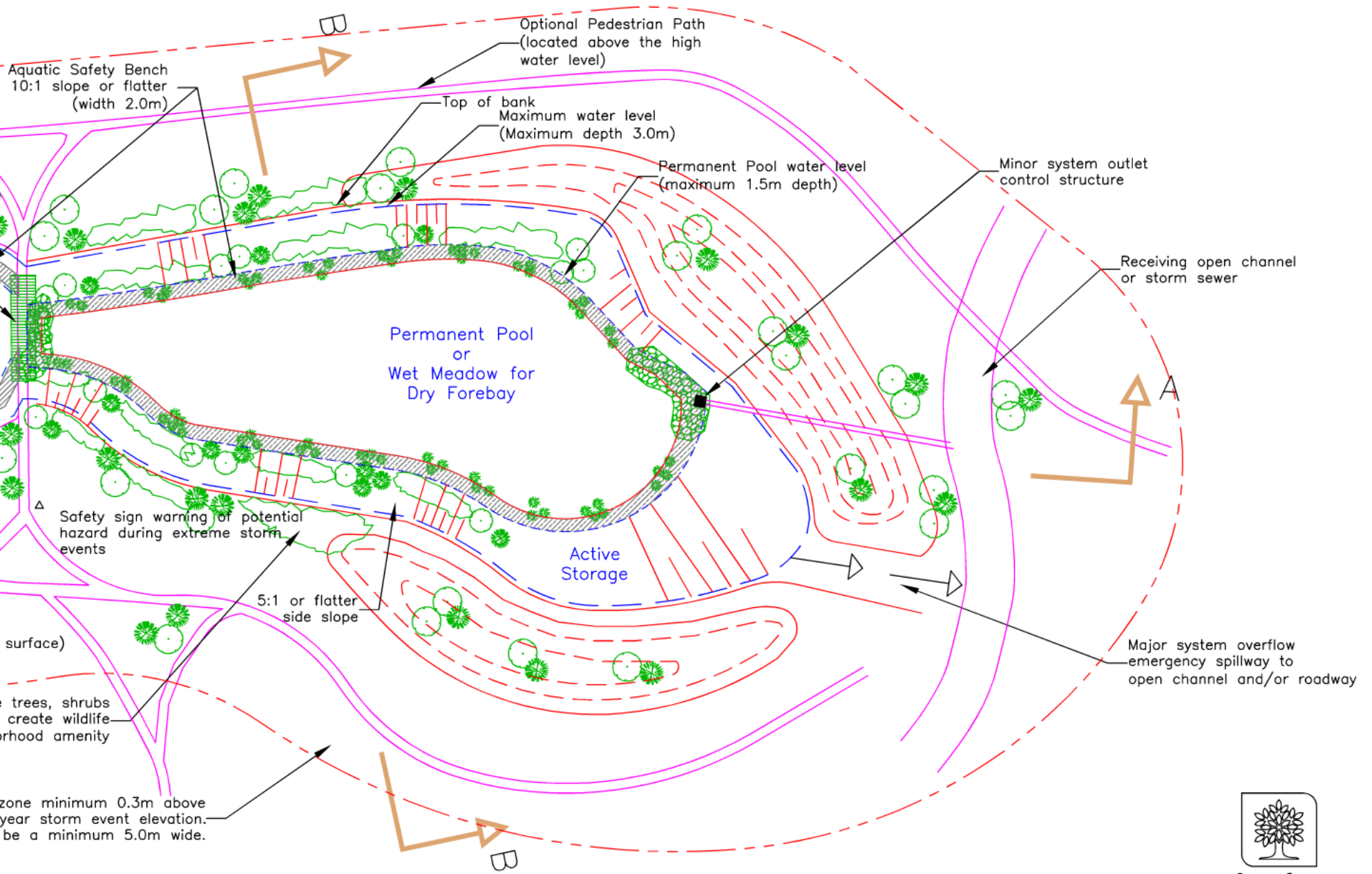




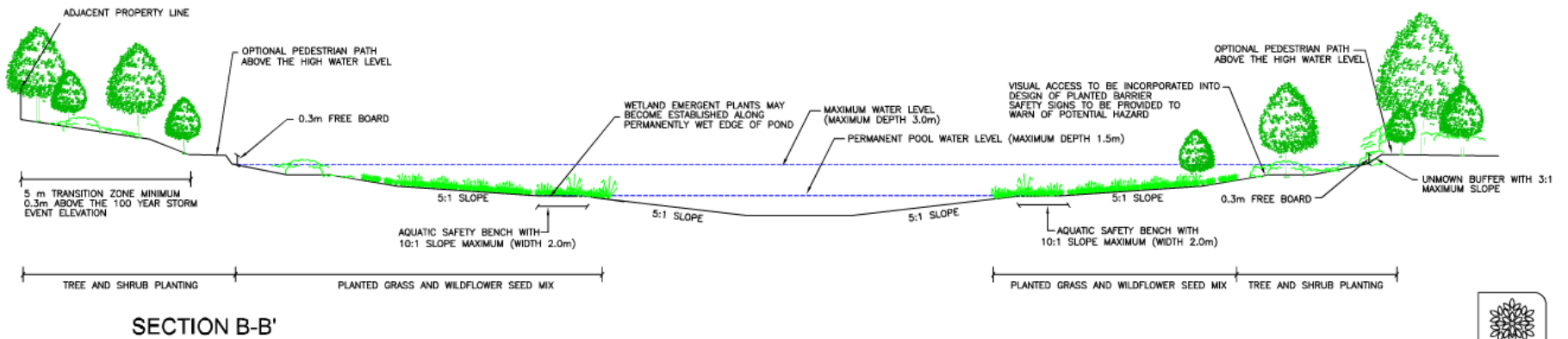
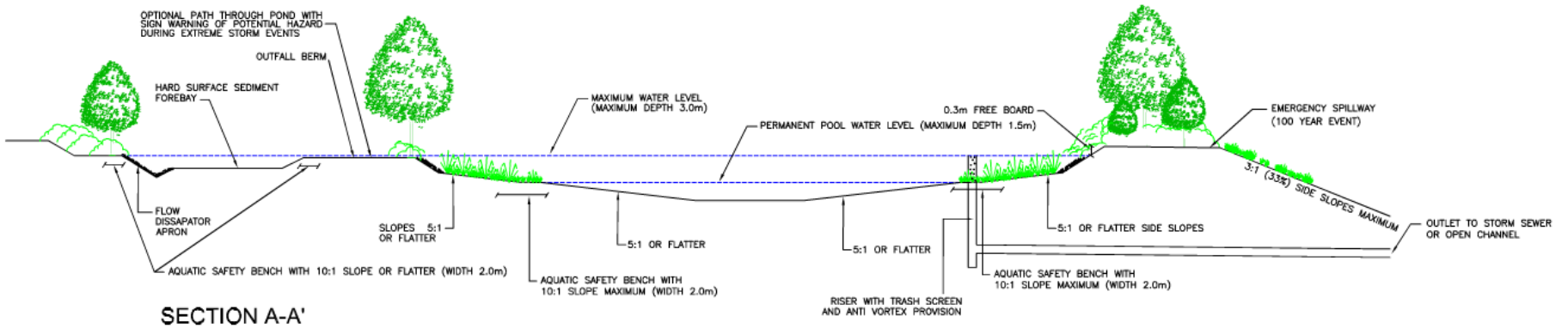
# Typical Conceptual Pond Design Wet/Dry/Hybrid

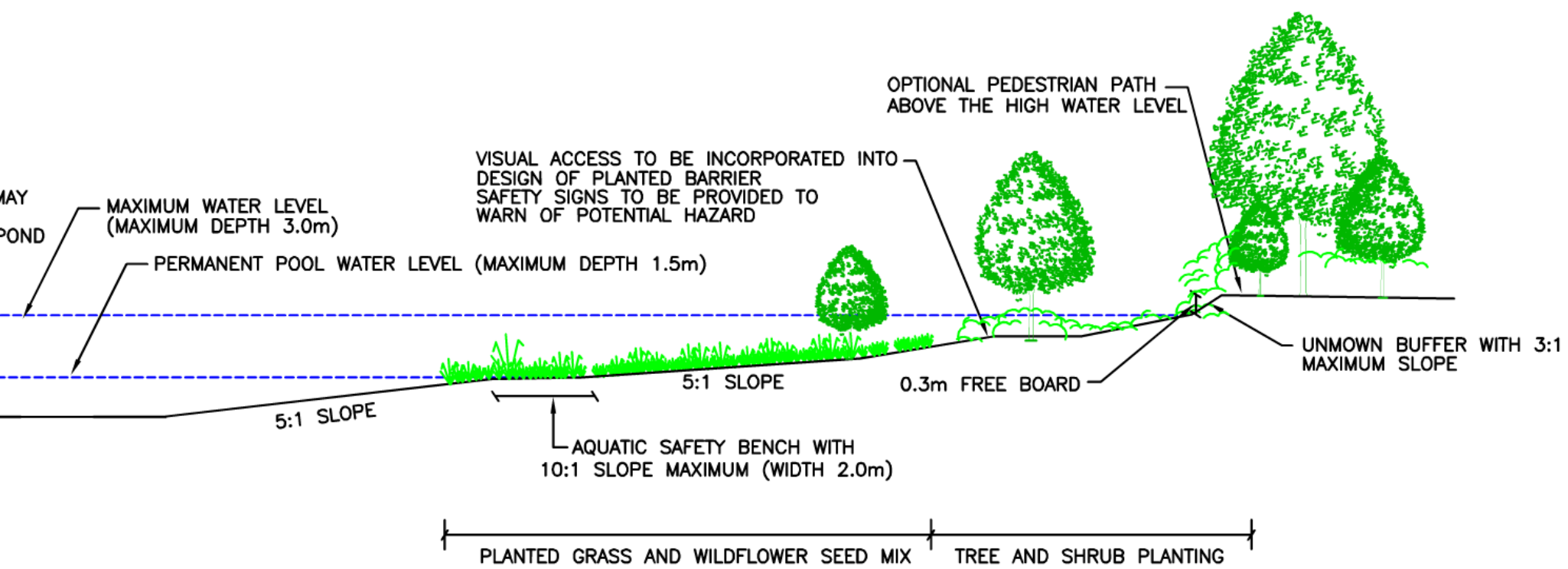






## Typical Conceptual Pond Design Wet/Dry/Hybrid





# Mornington Pond 1999



MCCORMICK

©2015 City of L

metres 100 200 300

# Mornington Pond 2014



metres 100 200 300

### Typical Pond



### We can help!



Planting Area Plan

## Example

### Keep in Mind

- The City of London Beaver Protocol suggests wrapping any trees in or around areas with beaver activity.







100 Year Flood Line

2 Year Flood Line

We can help!



Planting Area Plan



Planting Area Plan

# Keep in Mind

- The City of London Beaver Protocol suggests wrapping any trees in or around areas with beaver activity.

## HUMANE URBAN WILDLIFE CONFLICT POLICY: BEAVER PROTOCOL

March 10, 2015

City of London

Version: 2.0

### Why have a protocol?

To successfully implement the City's Humane Urban Wildlife Conflict Policy, specific protocols are required to address potential human wildlife conflicts. This protocol will ensure that beavers are treated in a respectful and consistent manner, balancing the various needs to protect the beaver and their habitat; the overall environment; City infrastructure, people; and property.



### Needs of the Beaver

Beaver communities require a minimum of 1-1.5 meters of standing water where their lodge is located for protection from predators and to successfully weather the winter months. They also can build secondary downstream dams to create shallower ponds to access new trees for food, as well as for ease and safety of travel. They require access to woody vegetation for building materials and food.

### Primary Goals of the Protocol

The protocol attempts to balance the following goals:

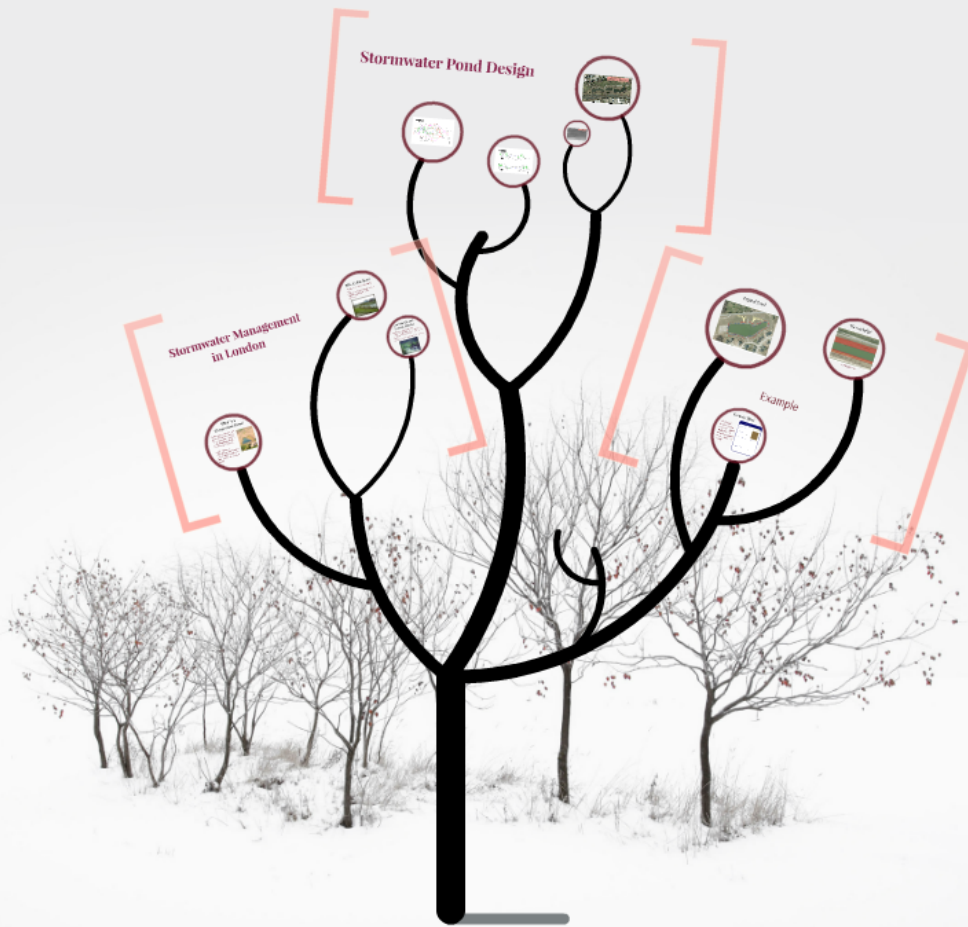
- Respect and protect beavers in their natural habitat;
- Allow for enhancements to biodiversity and the creation of wetland environments;
- Educate the public about the value of beaver created wetlands;
- Protect critical infrastructure;
- Protect people and property from flooding; and
- Maintain the use of the City's pathway and trail networks.

### Governing Principle

Creation of beaver ponds / marshes have many positive ecological benefits, but sometimes negative impacts occur that require intervention. This governing principle of this protocol is to strive to coexist with the beaver community in its existing location whenever possible. Use low impact, non-lethal control methods as first options when any of the primary goals of the protocol are negatively impacted. If all reasonable alternatives have been exhausted for coexistence, relocate the beavers to an appropriate alternative site only under specific circumstances and in accordance with the Ministry of Natural Resources and Forests (MNRF) legislation and the Council's approved Humane Urban Wildlife Conflict Policy.

### Continuous Improvement

The protocol will be reconsidered and brought back to Council by the middle of 2016 following the first year of implementing the protocol. Going forward, any significant changes to the protocol will be reported back to the various stakeholders and Council prior to implementation.



# Trees and Forests Advisory Committee: Planting Near Stormwater Ponds

# Keeping the Forest in 'The Forest City'

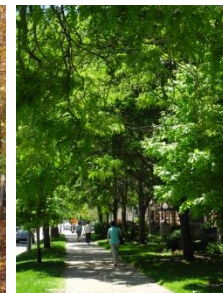
April 22, 2015



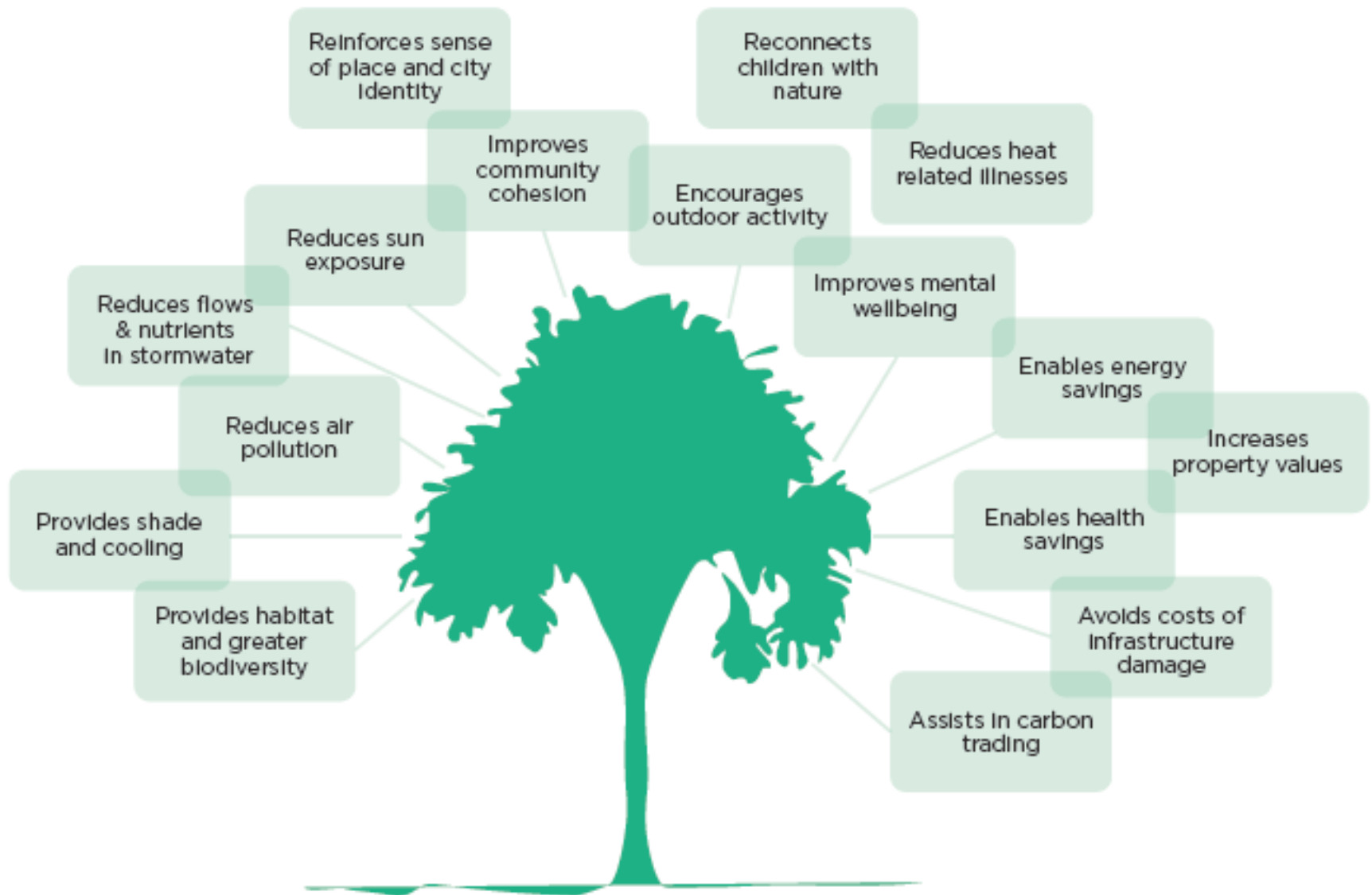
London  
CANADA

# Our Urban Forest

- Is all trees and associated vegetation within an urban area regardless of ownership or location
- Is an ecosystem that is highly influenced by environmental factors and land use decisions
- Is dynamic and evolves over time and across the landscape
- Is where people connect with nature



# Why the Urban Forest is Important





# Our Urban Forest in 2008

An aerial photograph of a city, likely Atlanta, Georgia, showing a dense urban forest. The city skyline is visible in the background, with several high-rise buildings. The foreground and middle ground are dominated by a thick canopy of green trees, interspersed with residential and commercial buildings. A road or highway runs through the center of the image, cutting through the forest. The sky is clear and blue.

**1 city**

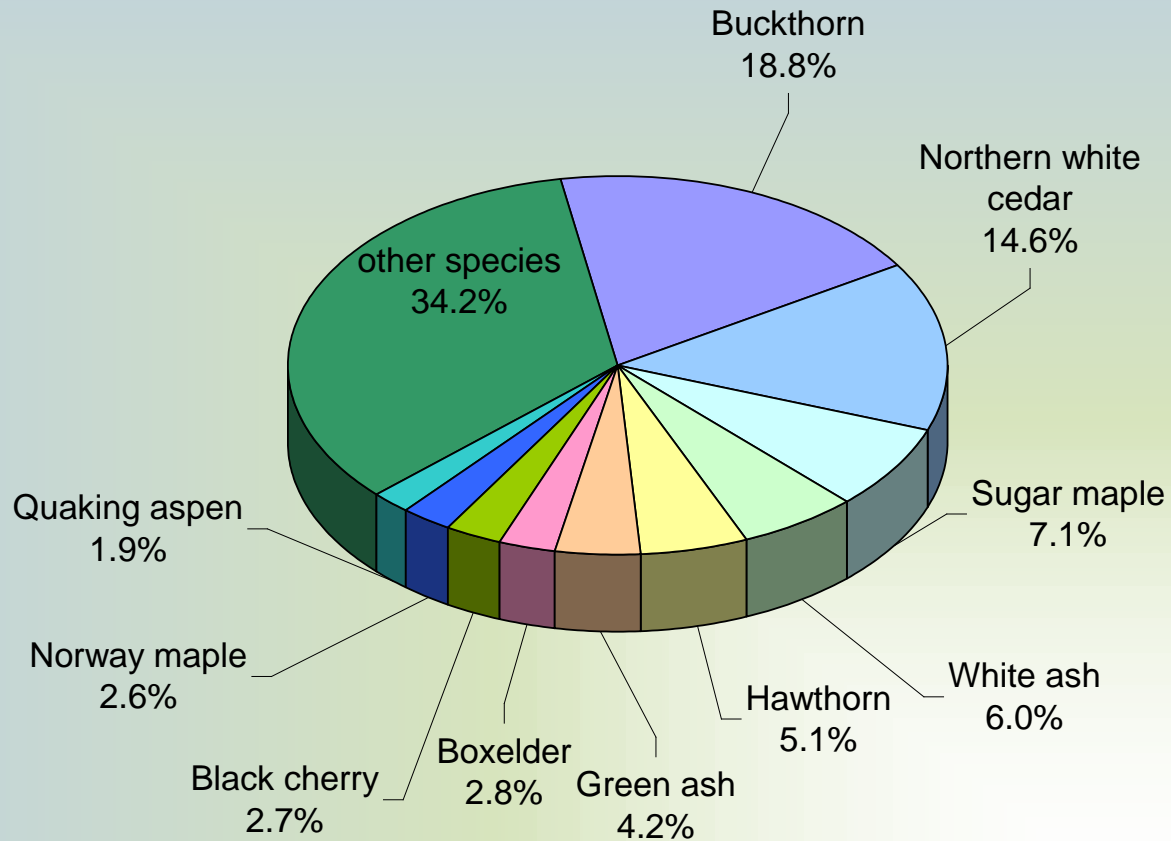
**4.4 million trees**

**24.7% tree canopy cover**

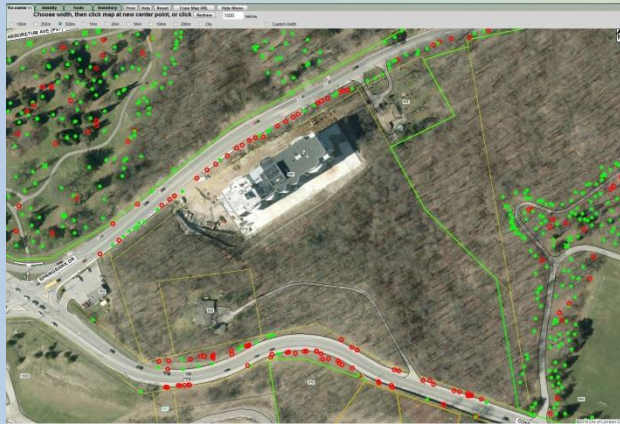
**\$1.5 billion structural value**

**\$17.8 million/year goods/services**

# Urban Forest Species



# What's happened since then

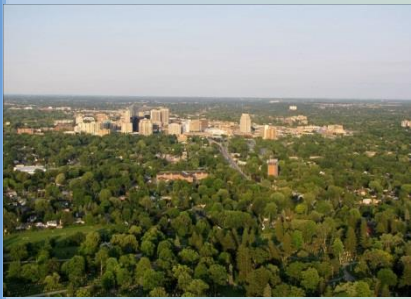


# What's happened since then



London  
CANADA

# Emerging issues



London  
CANADA

# We've made some gains

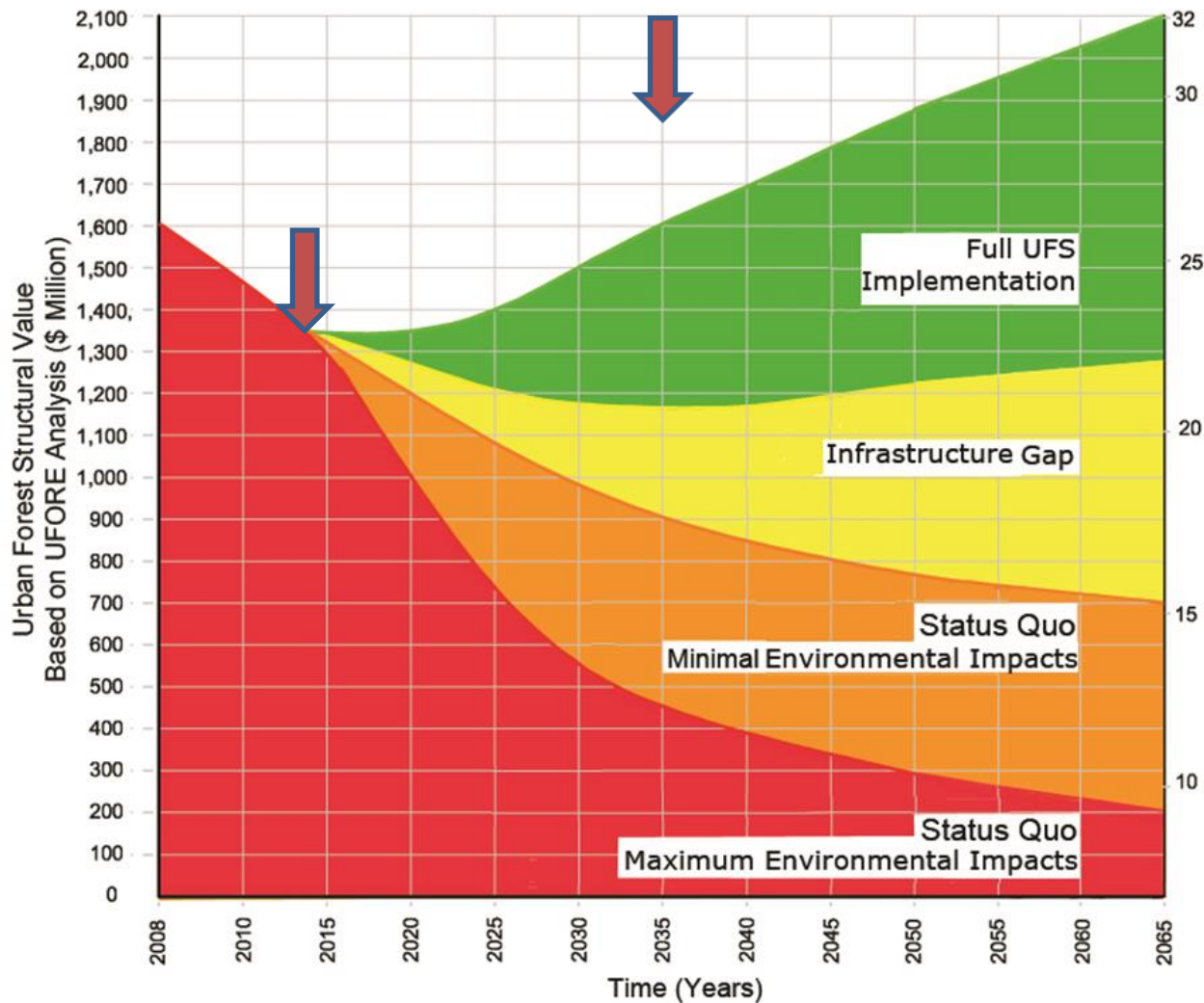






# However.....

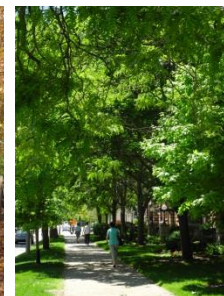
- London is at a critical point in the management of our urban forest
- Status Quo management will result in a smaller urban forest that is more susceptible to climatic and land use impacts and will not provide the social and environmental benefits that we are currently enjoying and the public is expecting



London  
CANADA



-  **Full Strategy Implementation**
-  **Status quo plus 1:1 tree replacement and better maintenance**
-  **Status quo and hope for the best**
-  **Status quo and major environmental impacts**





# The Strategy Answers the following 4 questions

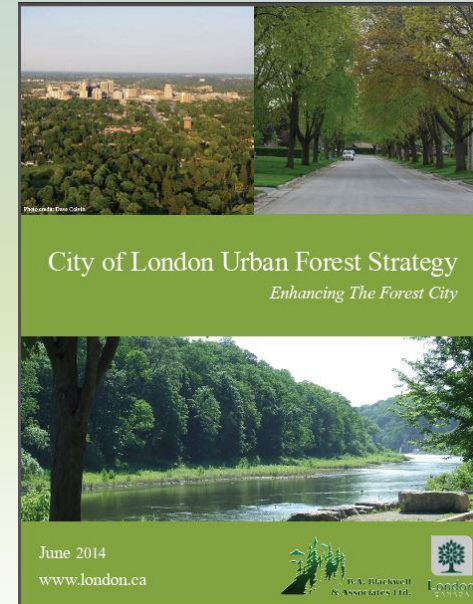
1. What have we got?

2. What do we want?

- *Become one of the greenest cities in Canada (London Plan)*
- *A healthy, diverse and extensive urban forest for today and the future*
- *The tree canopy target is the fundamental first step*
- *Residents have told us what is important to them*

3. How are we going to get there?

4. Are we getting what we want?



City Wide (All Land Use Types)	Target Canopy Cover 2035	Target Canopy Cover 2065	Estimated Required Budget Total
Council - Approved Canopy Target	28%	34%	37.7 M

**Council adopted the Strategy and Implementation Plan in September 2014**

- Total investment over 20 years is approximately \$26 million (average \$1.3 million per year)
- The cost of this investment is 1.2% of the future value of one of our most valuable assets
- This funding supports the entire Urban Forest, not just the City owned trees

**Public and Stakeholders take up the “Call To Action”**



**London**  
CANADA

# How We Are Going To Get There

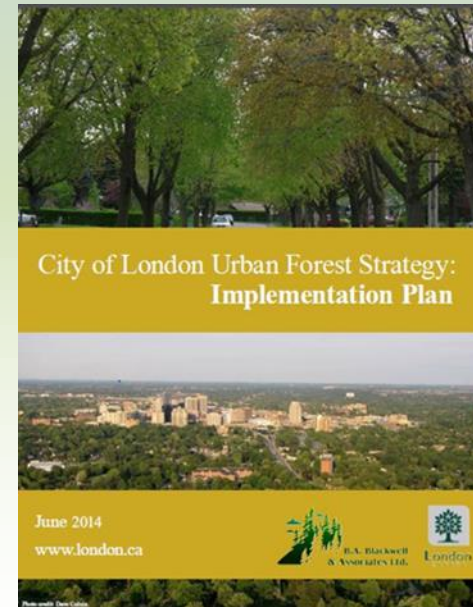
Higher targets can be achieved

Achieving the tree canopy cover targets requires a paradigm shift in how the urban forest is viewed and managed

It will require ALL of the following:

- *Policy changes*
- *Ordinance/by-law changes*
- *Increased staff and program levels*
- *Improved practices*
- *Stewardship*
- *Partnerships/collaboration*
- *Engagement*

These are all links in the chain – we can't cherry-pick which ones to support



# How we make it happen

There are 4 Guiding Principles – Links in the Chain to achieve London's Vision:

1. Protect the existing trees because the trees that are in the ground now will provide most of the canopy cover in 20 years



London  
CANADA

# How we make it happen

## Guiding Principles :

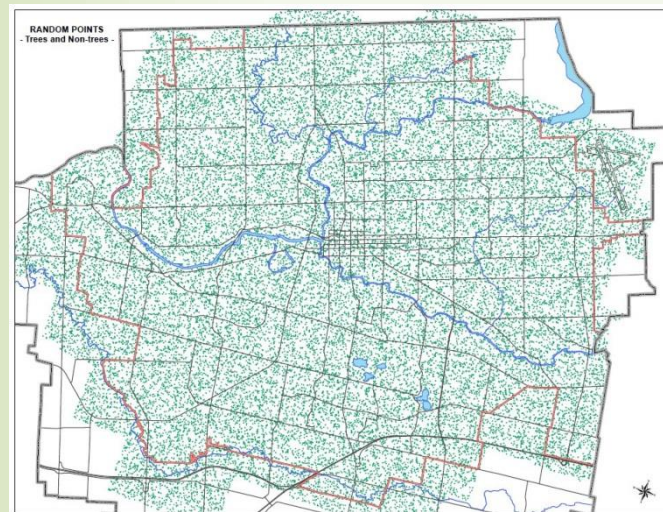
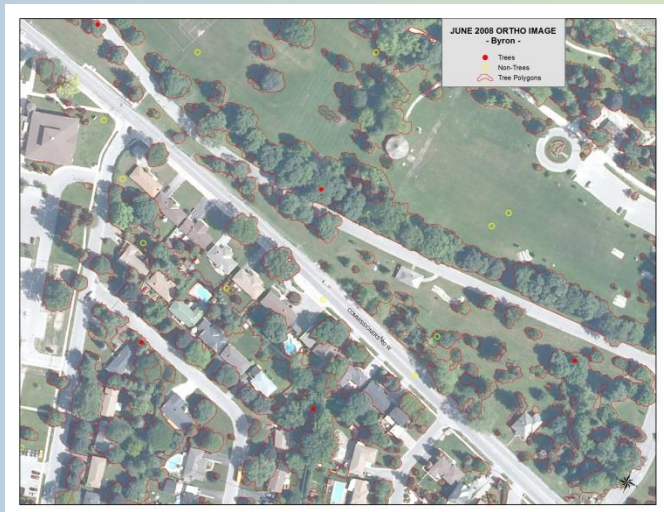
### 2. Maintain and Monitor the structure, function and value over time



London  
CANADA

# How we make it happen

## Tree Canopy Cover Re-Analysis

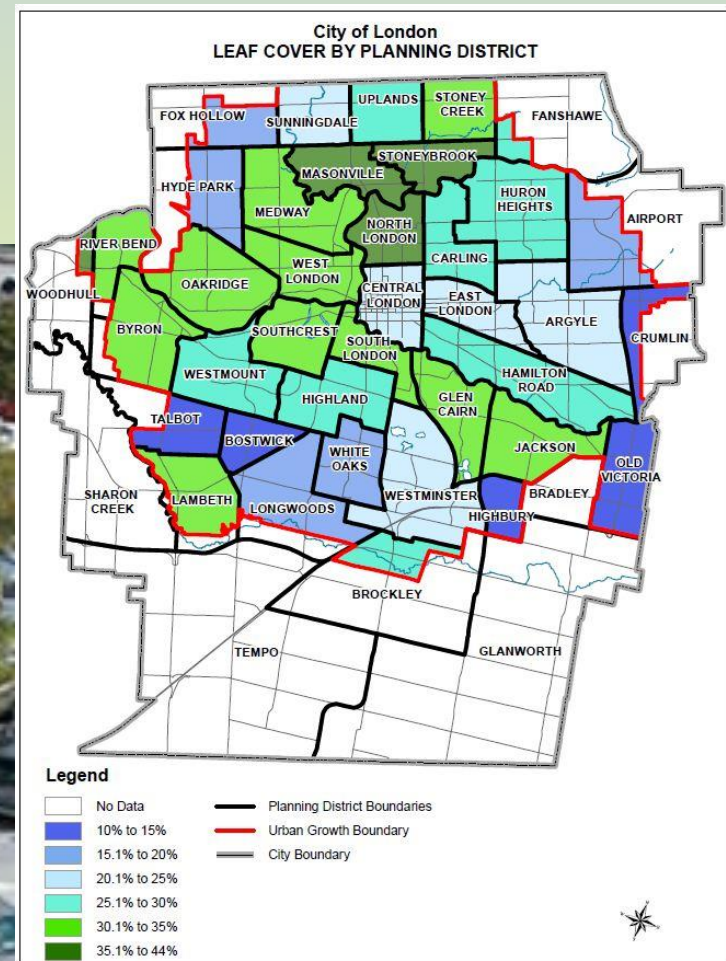


London  
CANADA

# How we make it happen

## Guiding Principles :

### 3. Plant More and Enhance the Urban Forest where possible



# How we make it happen

## Guiding Principles :

4. Engage the Public because  $\frac{3}{4}$  of all trees are on private property and all residents are stakeholders in our urban forest



London  
CANADA



# How We Are Going to Get There



London  
CANADA

## Short Term Priorities

Plant more and Enhance	Protect	Maintain and Monitor	Engage the Community
Establish tree canopy targets for Place Types	Hire additional staff for forest health and enforcement	<b>Establish Cross-Divisional Implementation Team</b>	Develop comprehensive communications strategy
<b>Develop overall planting strategy</b>	<b>Strengthen tree protection by-laws and policies</b>	<b>Remeasure tree canopy to determine change since 2008</b>	Initiate public and stakeholder information and discussion forums
Apply right tree-right place practices	No 'net loss' of tree canopy cover	<b>Complete CMMS and update inventory information</b>	Promote London's urban forest



# Summary

**Our Urban Forest is a community asset that benefits all of us**

**We are at a crossroads in the management of our urban forest**

**The Urban Forest Strategy brings portions of the Official Plan to life**

**We CAN achieve higher tree canopy targets set by Council**

**It will take a higher level of effort and resources than before – in some cases it will require a paradigm shift in thinking**

**We have to think of all the elements in the Strategy as links in a chain that is only as strong as its weakest link**



# Summary



What will “*The Forest City*” look like in 2035, 2065, 2114?



London  
CANADA

# Questions?



London  
CANADA