

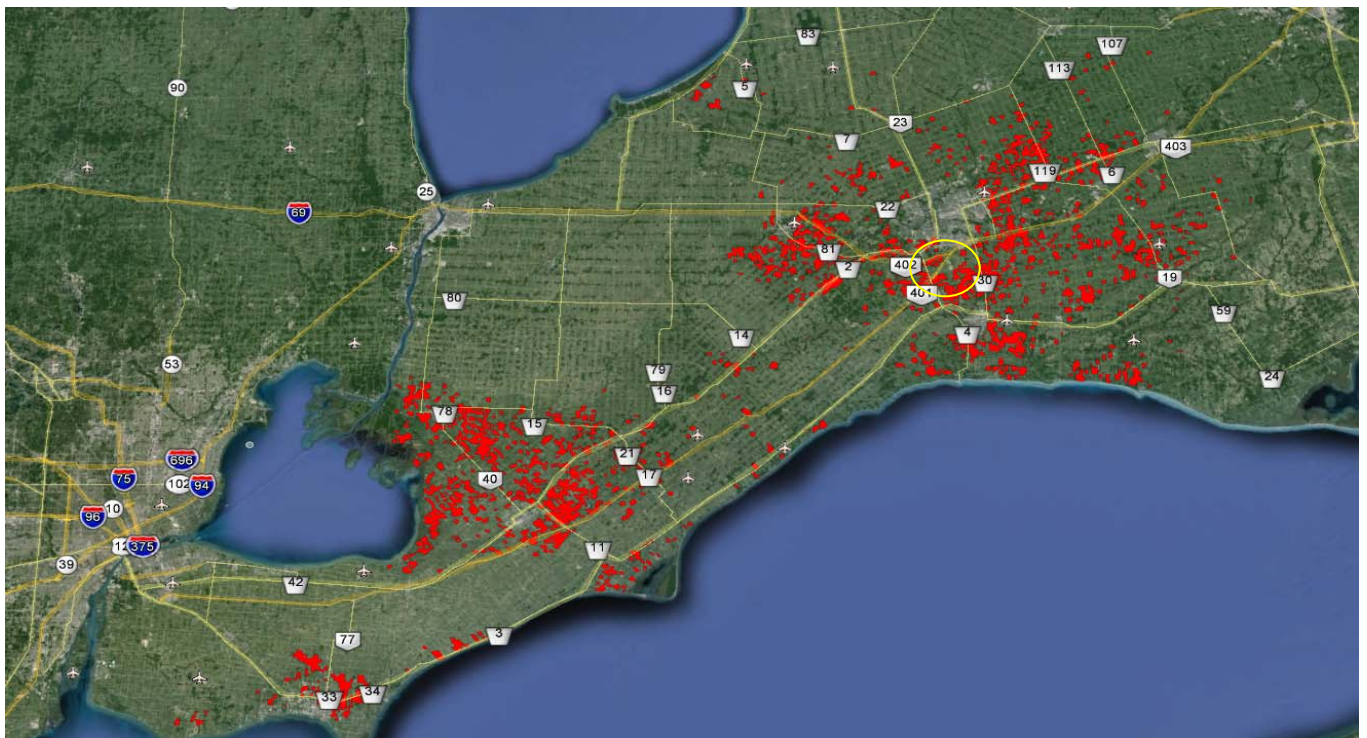
RE: Glanworth Drive, Colonel Talbot Road and the HWY 401 Interchange

I am writing this letter as I wish to speak at the upcoming Civic Works Committee meeting on May 5th in order to address your working group on behalf of Vegetable Processing Industry (Growers and Processors) who are highly impacted by the 401/Colonel Talbot Rd. underpass redesign project. I would like to share with your group some considerations for safety and logistical implications that could affect our production area for Bonduelle Ontario.

Bonduelle is the World Leader in Processed Vegetables. We are in every distribution channel Retail, Foodservice and Industrial. Our brands are Bonduelle, Arctic Gardens and Graves. We pack for many large customers including Green Giant, Loblaw, Wal-Mart, Safeway, and Costco and many others an example of our business scope. We have 58 processing plants in the World, and in North America we have 11 production plants; 3 in Ontario, 4 in Quebec, 3 in USA ,and 1 in Alberta.



Our production in North America covers over 118,000 acres, and represent 800 Million Pounds of Canned and Frozen Vegetable Products. In Ontario we grow all of our crop in the Southwest Ontario region from Woodstock to Leamington Ontario. We are very specialized in the areas we can grow our crops and have 234 growers that we contract to grow the crops for us. The main crops we grow in Ontario are Peas, Sweet Corn, Snap and Lima Beans, Carrots, Celery, Brussel Sprouts, Squash and Turnip. All of these crops are harvested and processed from June to December of each year. In the below map you will see all fields highlighted in RED are fields that are used for Bonduelle Vegetable Production in Ontario.



The 401 / Colonel Talbot Road area as circled above is of significant importance to the Bonduelle Ontario Growing Region. It is critical for our business to have access to the fields in this area with roads that are suited for our large harvesting equipment. Our operation runs 24 hours a day and seven days a week in order to pack the fresh high quality vegetables for our customers. You can see the vast number of fields highlighted in this area.

The harvest process for peas one of our largest crops consists three teams of 6 Large

Pea Harvesters as pictured below (Fig1,2,3), 2 tractors and dump carts and 3 transport trucks. The harvest crew will changes fields up to 3 times per day by traveling on the roads to the next field that is scheduled for production. Our drivers our trained in road safety but often have to deal with motor vehicles responding to the large harvest equipment while traveling with them on the road.

Fig 1 - Pea harvest equipment picking peas in a field.



Fig2 - Pea harvest equipment on the road moving to a field



Fig 3 - Pea harvest equipment merging onto the road



Bonduelle would like to communicate to you that in the area of Glanworth Drive, 401 and Colonel Talbot road we would like to have safe roadways for our equipment and operators moving in and out of fields. We would like to mitigate the risk of being held up with a load of fresh product because of a traffic flow impediment. We fully support Alternative 6 design while retaining traffic lights at the (new) intersection of Glanworth Drive and Colonel Talbot Road. With all of this being in place we will ensure that we can continue to produce locally grown food in this growing region for Bonduelle Vegetables.

The reason that our group and Lambeth Community Association and Maple View Farms are presenting to you is that we want to prevent and reduce the risk of accidents occurring for farm Equipment operators during road travel. Below is an example of an accident with a pea harvester in New York State that happened this past summer Fig 4. We do not want to see this happen on our local roadways.

Fig 4 Scene of accident when a car ran into the front of a pea harvester



On behalf of Bonduelle and all the local farmers in this area we urge you to accept our request to add Stop Lights at Glanworth drive so our equipment can pass safely across the road ways.

Regards,  
Jennifer Thompson

Jennifer Thompson CCA-ON  
Agriculture Technical Programs Manager  
Desk: (519)485-4410 ext. 16239  
Cell: (519) 521-8157

