

The Green Wortley Village 165 Elmwood Avenue London, ON

November 8, 2017



London



Presentation Outline

1 Location

2 Wortley Village

3 The Normal School

4 Existing Site

5 Design Concept

6 Product Information



Ontario Heritage Act

- Property is individually designated under Part IV of the Ontario Heritage Act. (bylaw L.S.P. 2854-377)
- Property is designated under Part V of the Ontario Heritage Act because it is within the borders of the Wortley Village/Old South HCD.

OHT Easement

- The City of London has a Heritage Conservation Easement with the Ontario Heritage Trust that includes the Normal School and surrounding parkland.

Ontario Heritage Trust

- Alterations of the property are prohibited unless the OHT is first contacted.
- An application for alteration must be completed. Landscaping is one of the alteration choices available in the application.

Wortley Village/Old South HCD and Individual Designation

- A Heritage Alteration Permit from the City of London is required.

Heritage Attributes

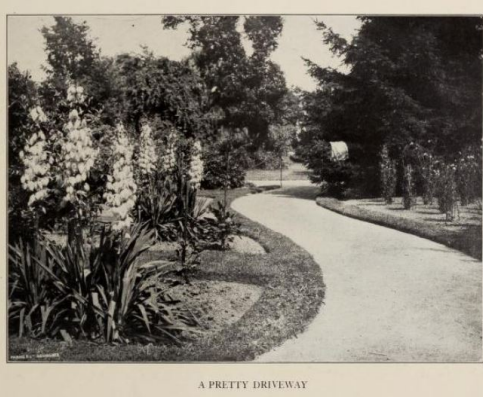
- Park like setting with open green space.
- Mature trees.
- Contextually linked to Wortley Village/Old South. The Normal School and green serve as a community landmark and gathering spot.
- The London Normal School is the only provincial Normal School to include significant elements of the original neighbourhood character of well designed housing stock contemporary to the time.



London Normal School



Source: London Normal School Year Books



1923



1924



1924



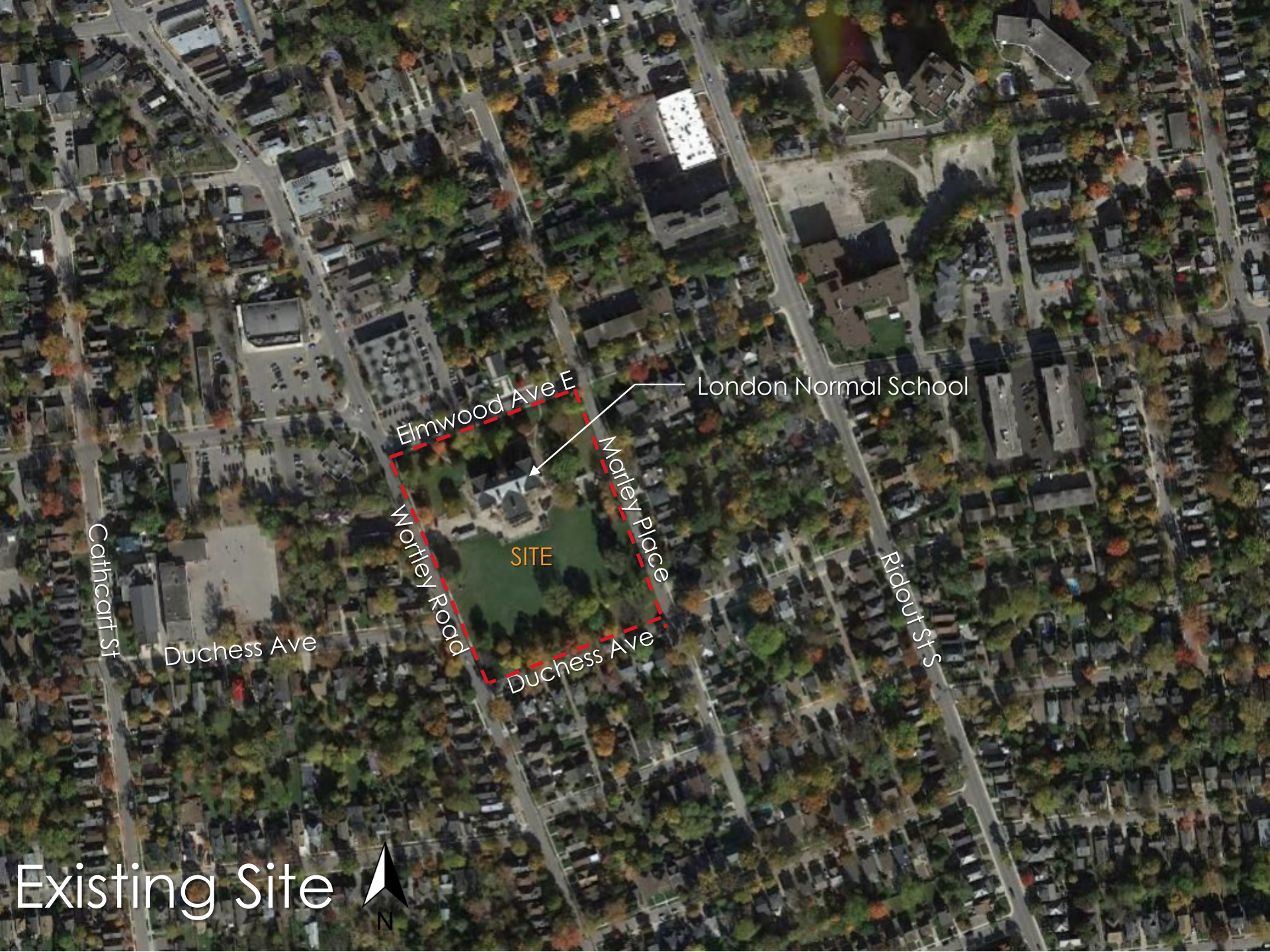
1947



1958

Historic Images





Elmwood Ave E

London Normal School

Morley Place

Worley Road

SITE

Ridout St's

Duchess Ave

Cathcart St

Existing Site





Elmwood Ave E

Existing Walkway

Existing Heritage Building to be Preserved and Protected

Existing Parking Lot

Marley Place

Duchess Ave

Wortley Road

Proposed Bench on Concrete Pad (Provisional)

(2) Bike Racks on Concrete Pad

Proposed 2.0m Wide Concrete Trail with Light Brown Finish

Proposed Concrete Entrance Plaza with Exposed Aggregate Finish

Proposed Bench on Concrete Pad (Provisional)

Proposed 2.0m Wide Concrete Trail with Light Brown Finish

Proposed Bench on Concrete Pad

Proposed 2.0m Wide Concrete Trail with Light Brown Finish

(2) Bike Racks on Concrete Pad

Proposed Concrete Entrance Plaza with Exposed Aggregate Finish

Proposed Bench on Concrete Pad

Proposed Bench on Concrete Pad

Design Concept

Nature of Intervention

- Construction of 2-metre wide Concrete Pathway along eastern and northern edge of The Green.
- Construction of entrance plaza on southeast and Southwest corner of The Green.
- Pathway will be accessible from the parking lot and the entrance plaza at corner of Duchess Road and Marley Road, two more points on Marley Road, and two points along Wortley Road.
- Installation of benches and bike racks along the new Pathway.
- Incorporate two 'low profile' electrical hubs and a water stub to better support community events.
- Maintains existing mature trees and un-programmed/open green space.
- New tree planting and ongoing maintenance of existing trees.
- Remove existing Soccer Field nets/posts

Preservation of Heritage Attributes

- Minimal impact to green space and enhancement of park like setting through introduction of walking Pathway.
- Protection of existing mature trees.
- Enhances contextual link to Wortley Village/Old South by addition of walking path and benches, which will enhance The Green's value as a community gathering spot.
- Design follows recommendations outlined in **Wortley Village – Old South Heritage Conservation District: Plan and Guidelines**, September 2014.



Maglin MLB870



Maglin MBR200



Maglin MLWR250-32



Legrand Power Pedestal



Leaf Concrete Stamps

Product Information



Questions?

Normal School, London, Ont.

