



300 Dufferin Avenue
P. O. Box 5035
London, ON
N6A 4L9

NOTICE OF PUBLIC MEETING

October 11, 2017

Dear Property Owner/Resident:

The City of London plans to reconstruct your street in 2018 to improve the safety and reliability of water, sewer and road infrastructure. Development Engineering (London) Limited has been retained by the City of London to prepare the design and oversee the construction of the project through to completion. The following provides you with information about the project and an upcoming public information meeting.

Project Details

Location: Kilally Road – Benjamin Drive to 200m east of Webster Street
Webster Street – Kilally Road to 175m south of Kilally Road

Schedule: Tentative Start – January 2018
Timeline – approx. 8 months

Scope: Watermain and appurtenances
Storm sewers and appurtenances
Road reconstruction including curbs, sidewalks and retaining walls

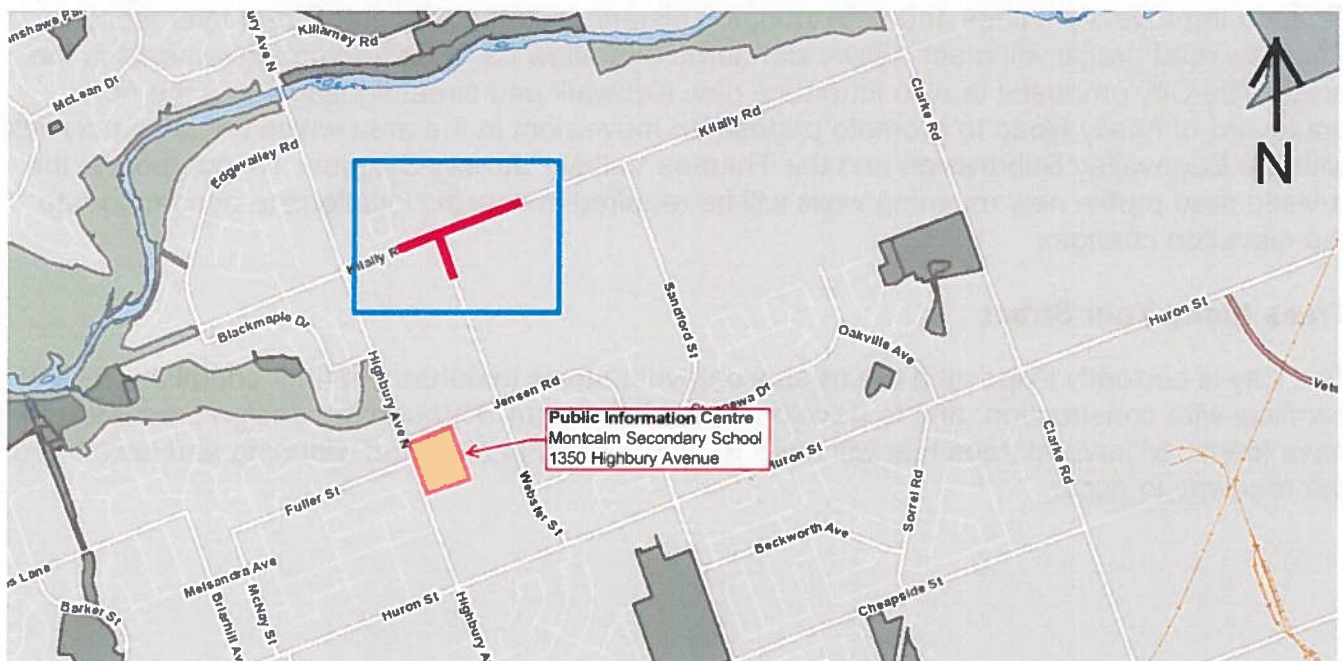
Public Meeting

Come out to an informal open house to learn more about the project and how it will impact you.

Date: Wednesday October 25, 2017
Time: 4:30-7:30 p.m. (drop in anytime between these hours)
Location: Montcalm Secondary School,
1350 Highbury Ave.
(Library Resource Centre-2nd Floor)

Purpose:

- View the construction plans;
- Get answers to your questions; and,
- Discuss impacts to your private property (driveway, landscaping, irrigation etc.).



The Corporation of the City of London
Office: 519-661- 2500 ext. 5806
Fax: 519-661-4734
tkoza@london.ca
www.london.ca

Watermains and Water Services

The City will be installing a new watermain on Kilally Road and will also be replacing the water services from the watermain up to the property line (at no cost to you) as part of the project. The water service is the pipe that brings water into your home. The public portion of the water service runs from the water main to the property line in front of your house, and the private portion runs from the property line to the water meter. The water services in your area are typically made of copper but some homes on your street may have galvanized iron water services which can corrode over time and restrict water flow. If you believe that your water service is substandard, you may wish to consider replacing the private portion at the time of construction.

Sanitary Services

The City is not currently proposing to provide any upgrades to the sanitary system as part of this project. Any sanitary upgrades will be undertaken in the future in conjunction with development in the region.

Storm Services

The City will be installing a new local storm sewer system on both Kilally Road and Webster Street to convey road drainage in the area. If you are experiencing surface ponding or have sump pump discharge problems, this is also an opportunity for you to have a new storm PDC installed to your property line at your cost, if you so choose. The storm PDC typically carries water discharged from your sump pump or from a small rear yard catchbasin to the city storm sewer within the street. If you do not have a sump pump, or if you are not experiencing surface flooding issues, you may not require a storm PDC. Many projects have unique circumstance affecting the storm drainage. City staff will be available at the public meeting to discuss your specific situation. Additional information can also be found at www.london.ca/sewers

Flooding Risk

The City would like to take this opportunity to remind you about basement flooding risk and prevention. There are ways to reduce your risk by looking at water drainage around your house. If you have a weeping tile connected to the sanitary sewer, you may want to think about disconnecting and installing a sump pump and installing a backwater valve. The City has a grant program that can help pay for the cost of this. For more information please visit www.london.ca/basementfloodingcauses

Roadway Improvements

As part of the proposed project the City is widening and lowering the road profile along Kilally Road to improve sight lines and safe stopping distances at the Webster Street intersection. The new road profile will meet AODA standards and allow for safer turning movements in the area. The City proposes to also introduce new sidewalk and street lighting along the north boulevard of Kilally Road to promote pedestrian movement in the area which will ultimately link with the Edgevalley Subdivision and the Thames Valley Pathway System. To incorporate the revised road profile new retaining walls will be required in specific locations to accommodate the elevation changes.

Trees Along Your Street

The City is currently inspecting the trees along your street to determine their condition, review conflicts with construction, and to develop a protection plan. Through the design process staff have identified several trees that will need to be removed to allow the widening and lowering of the roadway to occur.

Traffic

To accommodate the road reconstruction and provide a safe working environment it is proposed to close Kilally Road and Webster Street to motorists. Access to local residents will be maintained but the road itself will be closed and a detour established to re-direct all other motorists in the area for the full duration of the project.

More information will be provided at the public meeting.

Contact Information

If you have any questions about this project, please contact one of the people listed below:

Engineering Consultant
Jeff Thomas, Managing Partner
Development Engineering (London) Limited
jthomas@deveng.net
ph: 519-672-8310

City Project Manager
Max Kireev, C.E.T.
Transportation Planning & Design
mkireev@london.ca
ph: 519-661-2500 ext. 5925

We will provide you with an additional letter prior to construction to let you know more details about schedule and impacts from the work. If you have tenants, please notify them of this upcoming construction project. Thank you in advance for your cooperation throughout the coming months. If you have any questions, please feel free to contact our office anytime.

Sincerely,



Ted Koza, P. Eng.
Transportation Design Engineer
Transportation Planning & Design

Cc: Kelly Scherr – Managing Director and City Engineer
Councillor Mo Mohamed Salih

Information available in alternate formats upon request.

