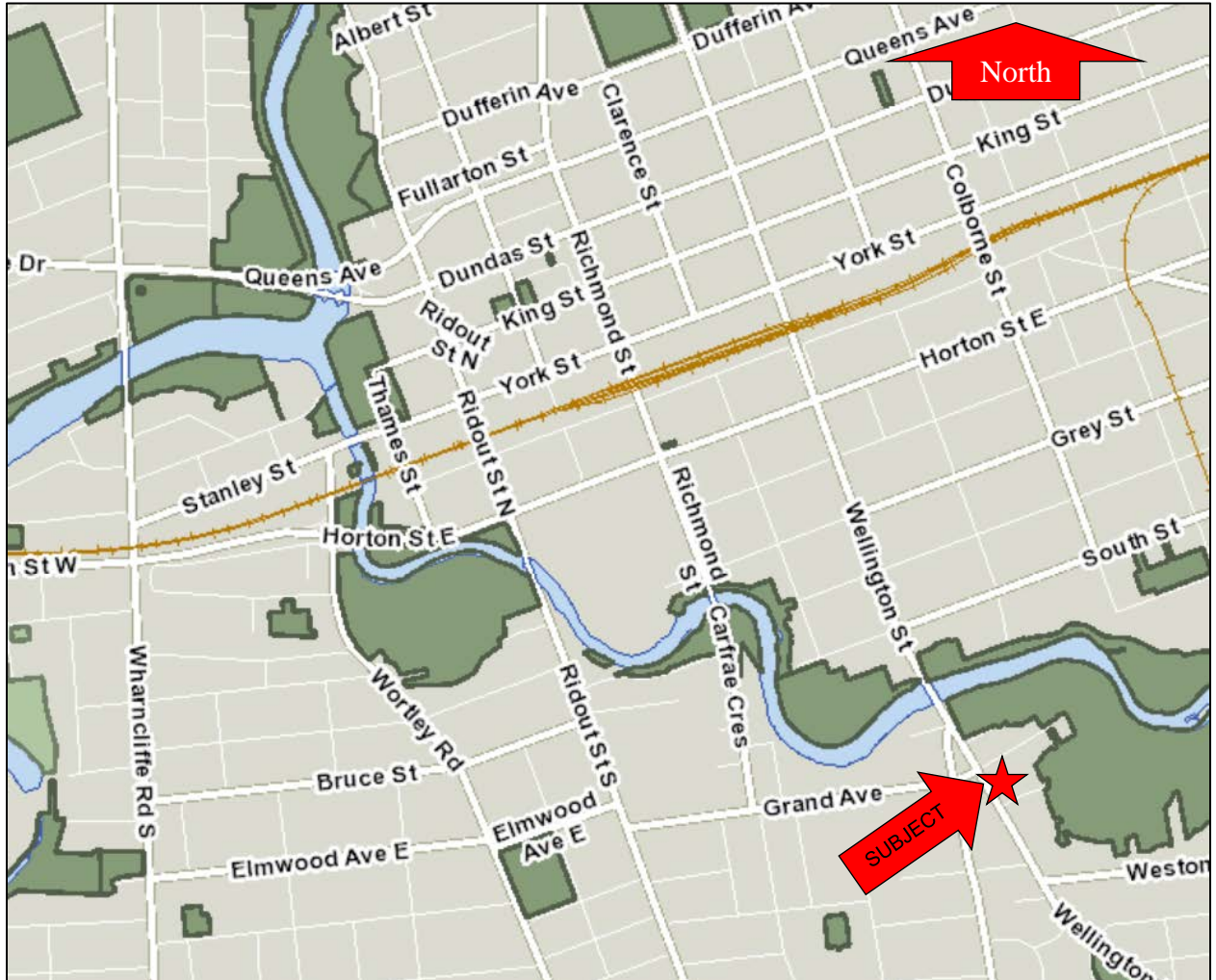


## Location Maps





**APPENDIX "A"**

Chair and Members  
Corporate Services Committee

#17165  
September 12, 2017  
(Property Purchase)

**RE: Property Acquisition - Shift Rapid Transit Project  
(Subledger LD170062)  
Capital Project TS1430-1 - RT 1: Wellington Rd - Bradley Ave to Horton St S Leg Widening  
26 Wellington Road South**

**FINANCE & CORPORATE SERVICES REPORT ON THE SOURCES OF FINANCING:**

Finance & Corporate Services confirms that the cost of this purchase can be accommodated within the financing available for it in the Capital Works Budget and that, subject to the adoption of the recommendations of the Managing Director, Corporate Services and City Treasurer, Chief Financial Officer, the detailed source of financing for this purchase is:

<b><u>ESTIMATED EXPENDITURES</u></b>	<b><u>Approved Budget</u></b>	<b><u>Committed To Date</u></b>	<b><u>This Submission</u></b>	<b><u>Balance For Future Work</u></b>
Engineering	\$7,475,000	\$1,209,469		\$6,265,531
Land Acquisition	29,563,000		174,314	29,388,686
Construction	25,000,000	445		24,999,555
Relocate Utilities	2,140,000			2,140,000
City Related Expenses	25,000	24,943		57
<b>NET ESTIMATED EXPENDITURES</b>	<b><u>\$64,203,000</u></b>	<b><u>\$1,234,857</u></b>	<b><u>\$174,314</u></b> 1)	<b><u>\$62,793,829</u></b>
 <b>SOURCE OF FINANCING</b>				
Capital Levy	\$1,445,800	\$26,449	\$3,734	\$1,415,617
Debenture By-law No. W.-5609-239 (Serviced through City Services - Roads Reserve Fund (Development Charges))	2) 19,552,900			19,552,900
Drawdown from City Services - Roads Reserve Fund (Development Charges)	2) 935,600	385,170	54,371	496,059
Senior Government	3) 42,268,700	823,238	116,209	41,329,253
<b>TOTAL FINANCING</b>	<b><u>\$64,203,000</u></b>	<b><u>\$1,234,857</u></b>	<b><u>\$174,314</u></b>	<b><u>\$62,793,829</u></b>

1) <u>Financial Note:</u>	<b><u>TS1430-1</u></b>
Purchase Cost	\$169,900
Add: Land Transfer Tax	1,424
Add: HST @13%	22,087
Less: HST Rebate	<u>(19,097)</u>
Total Purchase Cost	<u><u>\$174,314</u></u>

- 2) Development charges have been utilized in accordance with the underlying legislation and the Development Charges Background Studies completed in 2014.
- 3) The scope and timing of the Shift Rapid Transit Initiative is subject to securing Senior Government Funding.

JG

\_\_\_\_\_  
Jason Senese  
Manager of Financial Planning & Policy