

Hyde Park Stormwater Management Environmental Assessment Addendum

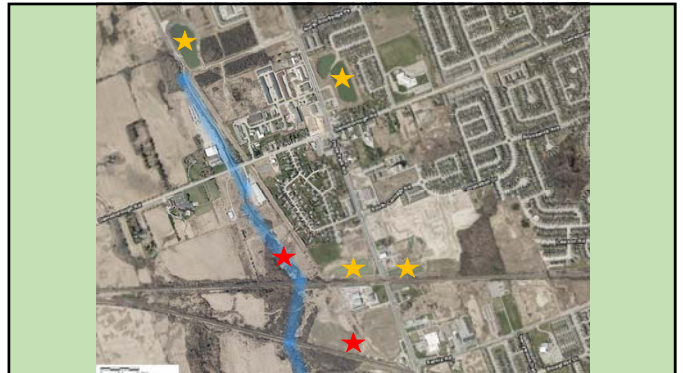
Presenter: David Gough

Study Area



Background

- The original Schedule B Municipal Class Environmental Assessment (EA) was completed in 2002.
- The 2002 EA provided for a total of six regional stormwater management (SWM) facilities.
- The SWM strategy focused on the use of regional SWM facilities only.
- The six SWM facilities will provide stormwater quality, quantity and erosion control for the study area.
- To date four of the six SWM facilities have been constructed.
- The current EA is an addendum to the 2002 EA.

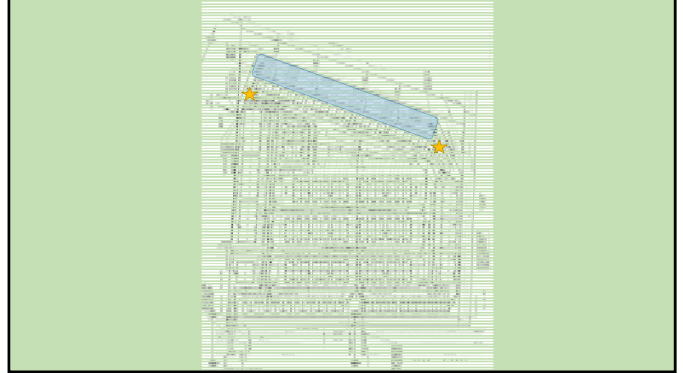


The EA Addendum Considers:

- Use of other SWM controls to be used in conjunction with the SWM facilities.
 - New SWM policies that have been implemented since 2002 such as the City's Permanent Private System (PPS) for onsite SWM controls.
 - New SWM practices that have become more widely utilized since 2002 such as Low Impact Development (LID) strategies and water balance.
- Benefits from reconfiguration of existing regional SWM facilities.
- Evaluate the need, location and design of the remaining two regional SWM facilities.
- Establishment of easements along the Stanton Drain for City access.

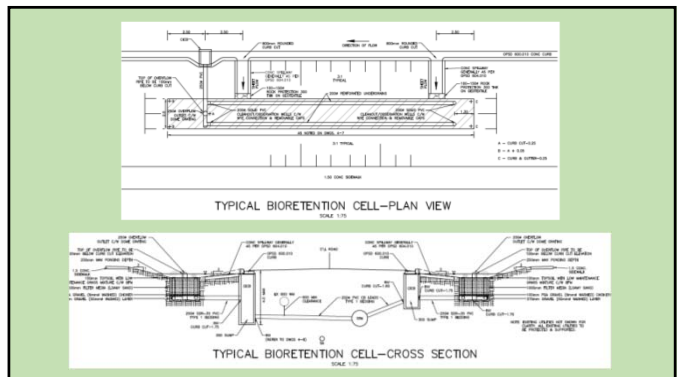
New Stormwater Management Policies

- The City has implemented new stormwater management policies since 2002.
- One key policy is the City's permanent private systems (PPS) for SWM on private development sites.
- Management of stormwater onsite reduces the need for regional SWM facilities and in some cases may free up additional capacity in existing SWM facilities.



Low Impact Development (LID)

- Implementation of LID features reduces the need for regional SWM facilities and promotes water balance and in some cases may free up additional capacity in existing SWM facilities.
- The City has implemented several projects to date utilizing LID features including Sarnia Road.
- The City encourages the use of LID features on private development sites as part of the PPS and to provide water balance.

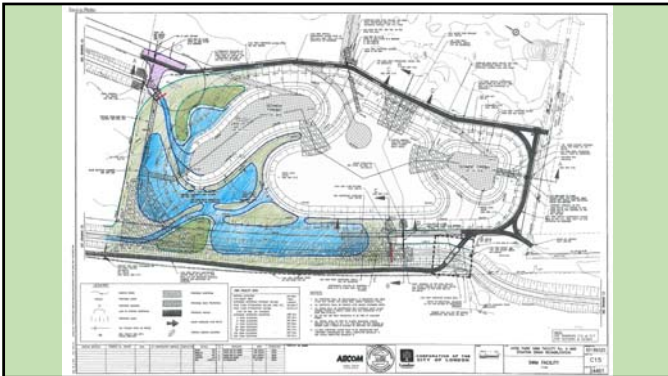




Reconfiguration of Existing Stormwater Management Facilities

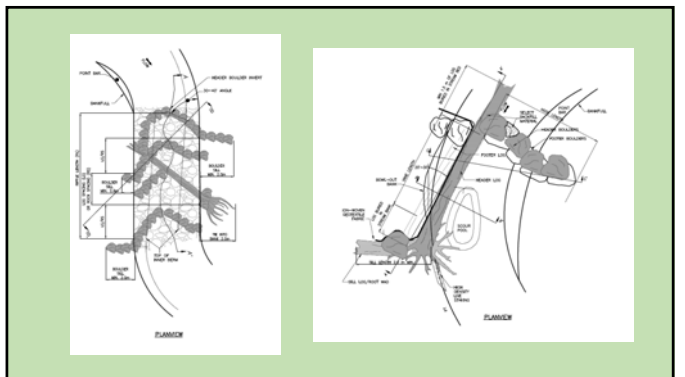
- The EA addendum allows the opportunity to update and refine the computer models used for the 2002 EA. This includes:
 - Utilizing more advanced computer software.
 - Incorporating onsite SWM controls such as PPS and LID measures into the computer model.
 - Utilizing current information for how the area has actually developed since 2002 and refinement of any other previous assumptions.
- Provides the opportunity to reconfigure the function of the existing SWM facilities and to utilize any additional capacity freed up through the use of onsite SWM controls such as PPS and LID measures.
- Provides opportunity for habitat enhancement features to be added to existing SWM facilities.

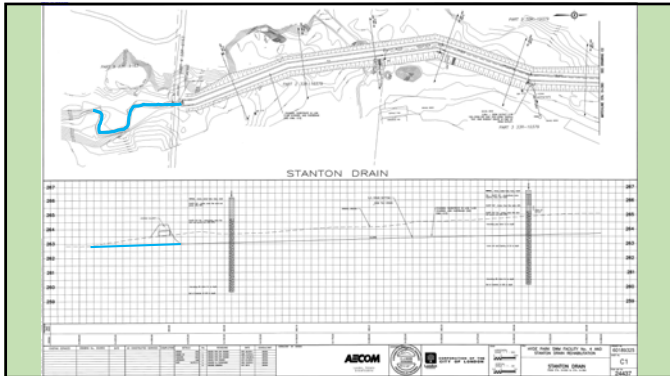
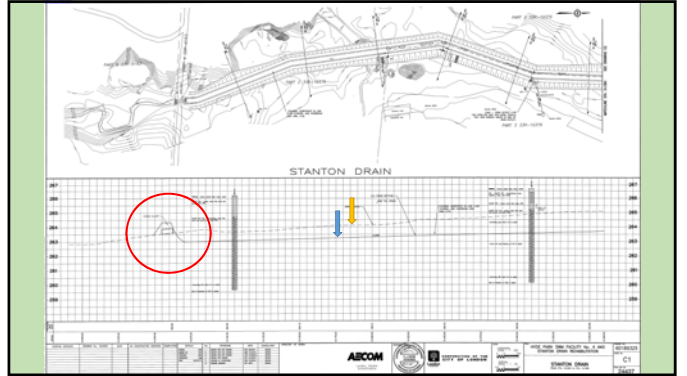
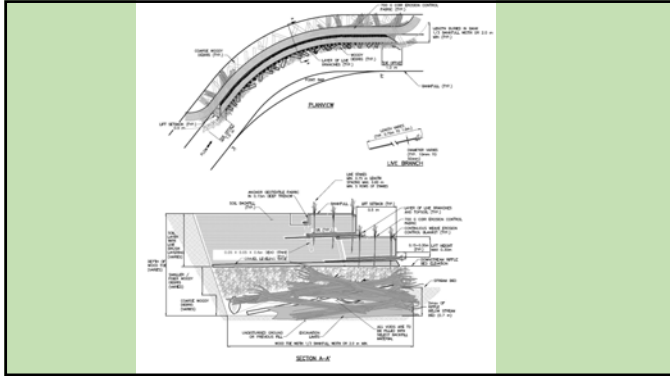




Stanton Drain

- Stanton Drain is not a Municipal Drain (Abandoned).
- Large portions of the Stanton Drain is located on private property.
- The establishment of easements will allow the City access to the Stanton Drain where it is on private property.
 - Monitor
 - Maintain
 - Administer the City's beaver protocol
 - When appropriate, complete previous work incorporating natural channel design and construction techniques.





Conclusion

- The EA addendum considers an updated SWM strategy for the study area and incorporates new SWM policies and practices.
- The EA addendum SWM strategy may potentially remove / relocate / reduce the need for the two remaining SWM facilities.
- The reconfiguration of the existing SWM facilities provides an opportunity to incorporate habitat enhancement features.

Thank You