

**8TH REPORT OF THE
ENVIRONMENTAL AND ECOLOGICAL PLANNING
ADVISORY COMMITTEE**

Meeting held on August 24, 2017, commencing at 5:00 PM, in Committee Rooms #1 and #2, Second Floor, London City Hall.

PRESENT: S. Levin (Chair), C. Dyck, P. Ferguson, S. Hall, B. Krichker, S. Madhavji, K. Moser, S. Peirce, N. St. Amour, S. Sivakumar, R. Trudeau and I. Whiteside and H. Lysynski (Secretary).

ABSENT: E. Arellano, A. Boyer, E. Dusenge, C. Evans, C. Kushnir, J. Stinziano, C. Therrien and N. Weerasuriya.

ALSO PRESENT: C. Creighton, J. MacKay and L. McDougall.

I. CALL TO ORDER

1. Disclosures of Pecuniary Interest

That it BE NOTED that no pecuniary interests were disclosed.

II. SCHEDULED ITEMS

2. Draft Conservation Master Plan for the Medway Valley Heritage Forest Environmentally Significant Area (south)

That it BE NOTED that the Environmental and Ecological Planning Advisory Committee (EEPAC) received the attached presentation from J. Petruniak, MSc, Dillon Consulting Inc., with respect to the Draft Conservation Master Plan for the Medway Valley Heritage Forest Environmentally Significant Area (south); it being noted that a Working Group, consisting of S. Levin (lead), A. Boeyer, C. Dyck, S. Hall, K. Moser, S. Peirce, N. St. Amour and R. Trudeau was established to review the above-noted Draft Conservation Master Plan and to report back at the next EEPAC meeting.

III. CONSENT ITEMS

3. 7th Report of the Environmental and Ecological Planning Advisory Committee

That it BE NOTED that consideration of the 7th Report of the Environmental and Ecological Planning Advisory Committee from its meeting held on July 20, 2017, was deferred until the next meeting due to the loss of quorum.

IV. SUB-COMMITTEES & WORKING GROUPS

None.

V. ITEMS FOR DISCUSSION

4. Work Plan

That it BE NOTED that consideration of the 2017 Environmental and Ecological Planning Advisory Committee Work Plan was deferred until the next meeting due to the loss of quorum.

5. Revised Thames Village Revised Working Group Comments

That it BE NOTED that consideration of the Revised Thames Village Working Group comments was deferred until the next meeting due to the loss of quorum.

6. Roles for the Medway Valley Heritage Forest ESA (south) Conservation Master Plan Process

That it BE NOTED that consideration of the roles for the Medway Valley Heritage Forest Environmentally Significant Area (south) Conservation Master Plan Process was deferred until the next meeting due to loss of quorum.

7. Invasive Plant Conference

That it BE NOTED the Environmental and Ecological Planning Advisory Committee approved the expenditure of \$90.00 for S. Sivakumar to attend the Invasive Plant Conference to be held on October 10 and 11, 2017; it being further noted that the EEPAC has sufficient funds in its 2017 Budget allotment for this expense.

VI. DEFERRED MATTERS/ADDITIONAL BUSINESS

8. (ADDED) Consulting As A Career Choice

That it BE NOTED that the Environmental and Ecological Planning Advisory Committee (EEPAC) received a verbal presentation from J. DeMan, H.B.Sc, Terrestrial and Wetland Ecologist, Water and Natural Resources, Environment, North America, AECOM, with respect to consulting as a career choice.

9. (ADDED) Parker Stormwater Management Facility and Trunk Storm Sewer EIS

That it BE NOTED that consideration of the Parker Stormwater Management Facility and Trunk Storm Sewer Environmental Impact Study was deferred until the next meeting due to loss of quorum.

10. (ADDED) Bostwick Road Improvements Municipal Class Environmental Assessment – Subject Lands Status Report and Environmental Impact Study

That it BE NOTED that consideration of the Bostwick Road Improvements Municipal Class Environmental Assessment – Subject Lands Status Report and Environmental Impact Study was deferred until the next meeting due to loss of quorum.

11. (ADDED) Wetland Relocation

That it BE NOTED that consideration of the wetland relocation discussion was deferred until the next meeting due to loss of quorum.

12. (ADDED) Draft Urban Agriculture Strategy - Working Group Comments

That it BE NOTED that consideration of the Working Group comments relating to the draft Urban Agriculture Strategy was deferred until the next meeting due to loss of quorum.

13. (ADDED) Invasive Plant Management Strategy

That it BE NOTED that consideration of the request for Environmental and Ecological Planning Advisory Committee comments relating to the Invasive Plant Management Strategy was deferred until the next meeting due to loss of quorum.

14. (ADDED) Environmental Impact Study – 2835 Sheffield Place

That it BE NOTED that consideration of the Environmental Impact Study for the property located at 2835 Sheffield Place was deferred until the next meeting due to loss of quorum.

VII. ADJOURNMENT

The meeting adjourned at 6:55 PM due to lack of quorum.

NEXT MEETING DATE: Thursday, September 28, 2017

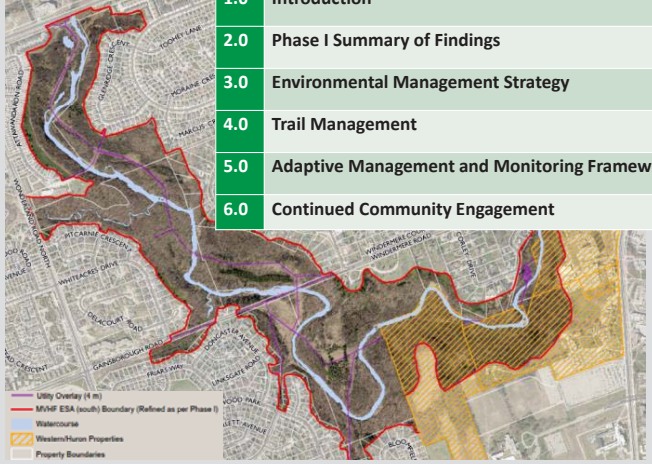


**Medway Valley Heritage Forest ESA (south)
Conservation Master Plan – Phase 2
Review of DRAFT Content**


August 24, 2017




Overview of the Phase II CMP



1.0	Introduction
2.0	Phase I Summary of Findings
3.0	Environmental Management Strategy
4.0	Trail Management
5.0	Adaptive Management and Monitoring Framework
6.0	Continued Community Engagement



REVIEW OF THE CMP PROCESS

CONSERVATION MASTER PLAN PROCESS

PHASE 1: Community Engagement and Participation ✓
Life Science Inventory and Evaluation ✓
Boundary Delineation ✓
Application of Management Zones & Review of Existing Trails ✓
Identifying Management Issues ✓

PHASE 2: Community Engagement and Participation
Goals, Objectives, Recommendations
Ecological Protection, Enhancement & Restoration
Trail Planning & Design Process
Priorities for Implementation
Final Conservation Master Plan





Milestones of Phase I CMP Process:

Community Information Meetings were held on:

- July 25, 2013 - Project Initiation
- January 27, 2014 – Presentation of Key Findings

Phase 1 CMP Report to Planning and Environment Committee of Council

- February 14, 2017
- [Phase 1 CMP](#) and the [Addendum](#) updated with 2016 version of Guidelines for Management Zones and Trails in ESAs - both approved by Council





P.O. Box 5208
500 Eastern Avenue
London, ON
N6A 4L6

February 15, 2017

J. M. Fleming
Managing Director, Planning and City Planner




I hereby certify that the Municipal Council, at its meeting held on February 14 and February 15, 2017 resolved:

- That, on the recommendation of the Managing Director, Planning and City Planner, the following actions be taken with respect to the Medway Valley Heritage Forest Environmental Significance Area (south) Conservation Master Plan (Phase I and II):
- the Natural Heritage Inventory and Evaluation for the Medway Valley Heritage Forest Environmental Significance Area (MVHF ESA), forming Phase I of the Conservation Master Plan, appended to the staff report dated February 6, 2017 as Appendix A; (BE APPROVED) in accordance with Section 15.3.8 of the Official Plan and policies 1421 and 1422 of The London Plan;
- the Addendum to the Natural Heritage Inventory and Evaluation MVHF ESA, including the existing trail review appended to the staff report dated February 6, 2017 as Appendix B; (BE APPROVED) in accordance with Section 15.3.8 of the Official Plan and policies 1421 and 1422 of The London Plan;
- the Local Advisory Committee (LAC) BE INCLUDED in the trail planning and discussions relating to environmentally significant areas as appropriate;
- the members of the Environmental and Ecological Planning Advisory Committee, Nature London and the community BE THANKED for their work in the review and comments on the Phase I document; and,
- based on the process within the recently updated Guidelines for Management Zones and Trails in ESAs; Phase II of the Conservation Master Plan for the Medway Valley Heritage Forest Environmental Significance Area (south) BE INITIATED. (2017-E20) (MAYFC)

Milestones of Phase II CMP Process:

- March 2017**
 - Formation of the Local Advisory Committee (LAC) and definition of roles circulated
- LAC Meetings**
 - April 27, May 4 and July 27 (future meetings September 7 and October 5)
- June 1**
 - Community Open House #1
- June 1 to June 30**
 - Web mapping tool and survey open to public
- August 22**
 - Draft distributed for discussion and comment

GOAL OF MVHF ESA (SOUTH) CMP – PHASE 2

To develop a comprehensive multi-year CMP that presents recommendations for achieving long-term ecological integrity and protection of the ESA through the implementation of an environmental management strategy.

(Consistent with OP 15.3.8. i, ii, / London Plan policies 1421 and 1422)










Implementing the Recommendations

Priority for Implementation	Time Period for Implementation
Top	Start within one year, including items already underway
High	Start within two years
Moderate	Start within three years
Low	Start within four years up to ten years
Long Range	Projects without specified time frames – may occur beyond ten years



Phase I Summary of Findings

- All significant ecological features identified in Phase 1 were found to be compatible with the existing managed trails based on Chart 2 from the Guidelines for Management Zones and Trails in ESAs
- Fifteen areas were identified that require active ecological restoration or special management. **Majority of ecological restoration work is underway in 8 of 15 Restoration Overlays** (Figure 2)
- Three areas were identified for naturalization (Figure 2)
 -
 -
 -



Phase I CMP Summary of Findings

- Nine wildlife habitat types identified & recommendations provided (in Table 12) for:
 - Colonially-Nesting Bird Breeding Habitat
 - Amphibian Breeding Habitat
 - Seeps and Springs
 - Habitat for Species of Conservation Concern:
 - Shrubby St. John's Wort
 - Striped Cream Violet
 - Slender Satin Grass
 - American Gromwell
 - Green Dragon
- Habitat for Threatened or Endangered native species identified:
 - Butternut
 - Cucumber Magnolia
 - Kentucky Coffee-tree
 - False Rue-anemone
 - Queensnake
 - Spiny Softshell
 - SAR bats



Summary of Feedback Received for Phase II

Source of Feedback/Comment
Comments submitted from LAC Members on behalf of: <ul style="list-style-type: none"> EEPAC Nature London Orchard Park/Sherwood Forest Ratepayers Huron University College Sherwood Forest Adopt-an-ESA
Social PinPoint – Online Mapping <ul style="list-style-type: none"> 82 Pins/comments <ul style="list-style-type: none"> 157 sub-comments across these 82 pins
Community Open House Hard Copy Mapping <ul style="list-style-type: none"> 90% of sticky notes on map were aligned with other comments submitted 10% were unique comments not previously submitted
Survey <ul style="list-style-type: none"> 105 online respondents; 12 hard copy submissions
Community Open House Comments <ul style="list-style-type: none"> 29 Event Comment Forms submitted <ul style="list-style-type: none"> 48% submitted comments; 52% only submitted feedback on open house content and information for contact list 80% said they were provided enough information to understand the project; 17% responded somewhat and 1 respondent said they were not provided enough information.



What We Heard From Public Engagement

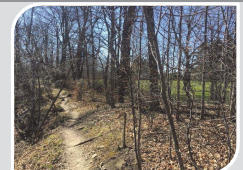
Written feedback from during the public engagement was generally similar to what has been provided by the LAC:

- The ESA is a unique feature; protecting and restoring/maintaining ecological integrity is the first priority
- There is a desire for **more learning/education** opportunities within the ESA
- Management of the ESA to continue to include **invasive species removal**
- Requests for **more enforcement** of by-laws (e.g. off-leash dogs, bicycles, encroachment)
- Improvements of trails** in sections is an area of importance.
 - Some **muddy, icy and wet areas** are present along the trail system; requests for boardwalks or other solutions
 - Monitoring** in the ESA is important



What We Heard From Public Engagement

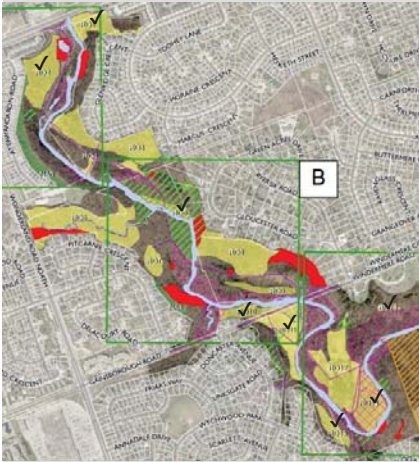
- There is a desire for **connectivity/continuity** of trails throughout the ESA (i.e. better linkages, bridges, easements through private property, etc.)
- Opposition to the closing of other “existing” trails**, including a mix of managed and informal
- There is a desire for some **closed trails** (i.e. Gainsborough Ravine to Snake Creek Valley) to be re-opened.
- There is **opposition to paving** of trails but some asked for multi-use paths



Gainsborough to Snake Creek Trail – temporarily closed – relocate Trail onto lawn area then ecologically restore lawn



Environmental Management Strategy: Restoration



- Previous Work - Majority of restoration work underway in 8 of 15 Restoration Overlays (RO) on Figure 2
- High Priority RO 5, 14 & 15 to protect SAR implemented in 2013-2017
- City / Dillon & UTRCA recognized for innovative work, SAR habitat protection and contributions to the [Federal Recovery Strategy for the False Rue-anemone \(Enemion biternatum\) in Canada](#)
- Phragmites high priority in all ESAs incl. Medway. Control since 2013 (RO 1 & 2)
- Current Work to manage Periwinkle, Goutweed, Buckthorn, Norway Maple, Phragmites, Loosestrife, and, native tree / shrub plantings and 74 ash tree EAB injections continues (RO 10, 11 & 13)
- Garlic Mustard pulled by SF Adopt an ESA
- Future Work – implement RO3, 4, 6, 7, 8, 9 & 12 to manage Buckthorn, Snowdrops, Woodland Sedge, plant trees & continue monitoring

Environmental Management Strategy: Naturalization



- NA1, NA2 and NA3
 - Part of RO9, RO11, RO12
- NA4: Identified during Phase I
- NA5: Identified during Phase II
- High quality ecological restoration of mown lawn areas into native meadows and succession to woodland
- Restoration work in association with trail implementation over lawn areas could define limit of restoration and limit future encroachment

Draft Trail Management Plan

Considerations Raised by LAC / Public Consultation

- Access
- Existing Unmanaged Trails
- Connectivity of Managed Trail System
- Trail Condition
- Non-permitted Uses
- Population Growth
- Bank Migration



Photo: Example of muddy/wet Level 1 trail over sewer alignment / Utility Overlay south of Glenridge Drive, east side of ESA, near Access 10

Trail Management - Access and Wayfinding

Signage in ESAs as described in Guidelines are:

- Informational / Regulatory / Warning
- Interpretive
- Designation / Directional
- Access Point Signs: ESA name, pictographs for rules, QR codes - Brochure / Observation Reports, and, use at own risk. Complete rules / by-law sign on the back.

New AODA compliant signage at all access points to include a map and identify:

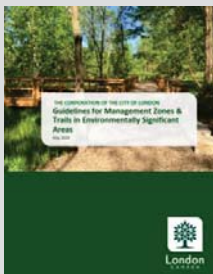
- The length of trail
- The type of surface of which the trail is constructed
- The average and minimum trail width
- The average and maximum running and cross slope
- The location of amenities, where provided



Current ESA Access Point Signage

Trail Management Suggestions from Public

- All significant ecological features identified in Phase 1 were found to be compatible with the existing managed trails based on Chart 2 from the Guidelines for Management Zones and Trails in ESAs.
- -Documented in the Addendum to Phase I and approved by Council (February 14, 2017)

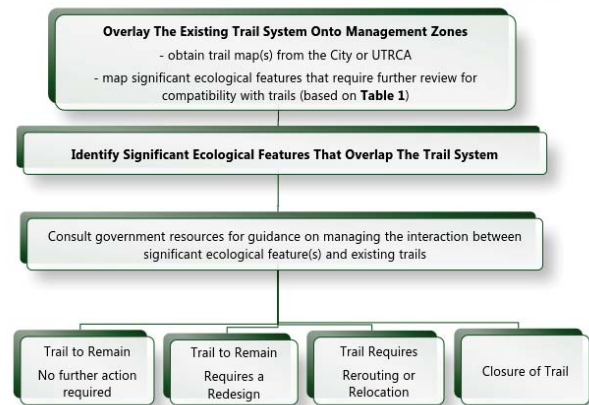


Next Step - Use the Guidelines to:

- Review trail management suggestions from the Public
- Provide 3 Draft Trail Concept Plans that comply with Guidelines, enhance protection of features & improve accessibility - for review and comment:
 1. DRAFT "Enhanced As Is" Trail Concept Plan
 2. DRAFT "Partial Improved Connectivity" Trail Concept Plan
 3. DRAFT "Enhanced Connectivity" Trail Concept Plan

Draft Trail Management Plan Enhanced "As-Is" System

Chart 2: Review of Significant Ecological Features and Trail Recommendation for Existing Trails



Draft Trail Management Plan Enhanced “As-Is” System

Trail to Remain Requires a Redesign

“Keep the existing trail and include design features to preserve ecological integrity”

This includes:

- Improvements to trails in muddy / wet areas etc. to reduce impact and improve accessibility
- Better alignment of trails with Utility Overlay to minimize impacts while accommodating persons with disabilities wherever possible.

Trail Requires Rerouting or Relocation

“Realign the trail to avoid the significant ecological feature”

This includes:

- Realignment and reopening of temporarily closed managed trail



Draft Trail Management Plan: Enhanced “As-Is” System



Draft Trail Management Plan Establishing “Partial Connectivity”

Chart 3: Review of Significant Ecological Features and Trail Recommendations for New Trails

Map Significant Ecological Features Over Management Zone Map
- only map significant ecological features that require further review for compatibility with trails (based on Table 1)

Consult government resources for guidance on assessing the interaction between significant ecological features and new trails

If trails are incompatible with significant ecological feature:
Trail Not Permitted

If trails are compatible with significant ecological feature, proceed with trail planning according to sustainable design practices



Trail Management: Establishing Partial Connectivity

- In addition to the “As-Is” system:



Draft Trail Management Plan “Enhanced Connectivity”

Connectivity across Medway Creek:

- Linkage would be considered a “new segment of trail”
 - Linkage refers to a “connection area over water”
 - Mechanism to provide connection not yet defined

Chart 3: Review of Significant Ecological Features and Trail Recommendations for New Trails

Map Significant Ecological Features Over Management Zone Map
- only map significant ecological features that require further review for compatibility with trails (based on Table 1)

Consult government resources for guidance on assessing the interaction between significant ecological features and new trails

If trails are incompatible with significant ecological feature:
Trail Not Permitted

If trails are compatible with significant ecological feature, proceed with trail planning according to sustainable design practices



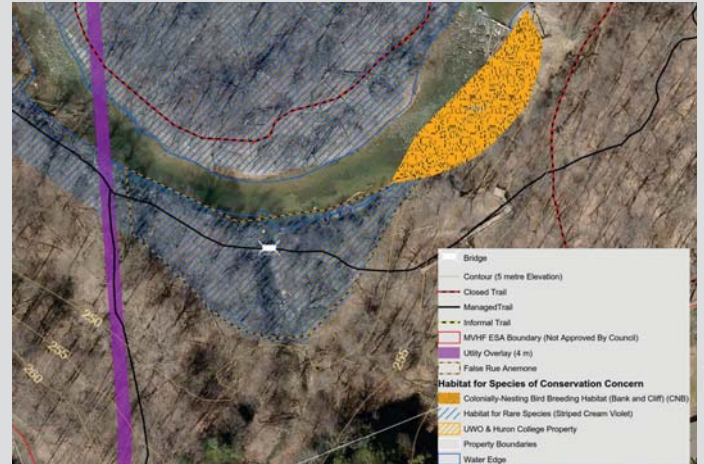
Example - Bridge Near Metamora - Before



Bridge Near Metamora - After



Bridge near Metamora - Ecological Features



Draft Trail Management Plan "Enhanced Connectivity"



Analysis of Linkage Options Suggested by Public

Is the location subject to current impacts due to absence of a linkage?

Would a linkage minimize/ eliminate those impacts?

Is there a significant ecological feature(s) present?

Would the linkage connect existing managed trails or would new trail sections also be required?

Is the location located along a utility route (utility overlay) to minimize impacts & enhance accessibility?

Supported by/ Compliance with Guidelines

Potential Crossing A



Potential Crossing D



Adaptive Management and Monitoring

Baseline conditions available from data during Phase I and from regular maintenance operations by UTRCA and observations submitted by the public

- Monitoring proposed to include:
 - Bank migration
 - Trail condition
 - Trail usage (linkages across Medway Creek)
 - Sensitive species
 - Invasive species
 - Wildlife & wildlife habitat
 - Encroachment
 - Non-permitted uses
 - Restoration and naturalization



Linkages: Next Steps

- Priority on Linkage A.
- Timeline to implement Linkage D is not set and the decision to implement is subject to the following:
 1. Monitor usage of trail(s) before and after implementation of Linkage A.
 - i. Installation of trail counter(s) at select locations north and south of Linkage A to collect usage data, and, monitor user compliance with associated informal trail closure east of Medway Creek.
 2. Following implementation of Linkage A, review the feasibility and appropriateness of Linkage D with the Guidelines, regulations, visual impact study and consultation.
 - ii. If favourable, options for D include seasonal crossing options such as stepping stones.



Invasive Species Early Detection and Rapid Response (EDRR)

- Invasive species and by-law infractions were identified as the two biggest “threats” to the ESA through the consultation feedback.
- The EDRR approach currently includes a network of volunteers from community groups, Adopt an ESA groups, TVTA, Nature London, gardening clubs, and the public. The ESA Team will continue to manage and monitor using EDRR approach.

1. Early Detection
2. Alert Screening
3. Risk Assessment
4. Rapid Response (if required)
5. Monitoring & Reassessment

The City is an identified leader among Ontario municipalities and other levels of government in demonstrating a proactive approach to the management and control of invasive species in protected natural areas including the MVHF ESA since 2007.



Continued Community Engagement

London’s ESAs have a long history of community engagement. Existing programs include:

- Adopt-an-ESA Program (Pulling Garlic Mustard, TAG, LAC, Observation Reports etc.)
- Friends of Medway Creek (Tree Planting / Community Day Events)
- Scientific Research Opportunities
- Student Consulting Projects, Thesis/Theses and Co-op Opportunities
- Student placement opportunities with UTRCA
- Internship Opportunities at City

Proposed New Programs:

- Citizen Science Projects
- BioBlitz



Summary of Draft CMP

- All significant ecological features identified in Phase 1 were found to be compatible with the existing managed trails based on Chart 2 from the Guidelines for Management Zones and Trails in ESAs
- Environmental Management Strategy in Draft CMP:
 - Fifteen areas were identified that require active ecological restoration or special management. Majority of ecological restoration work is already underway in 8 of 15 Restoration Overlays (Figure 2).
 - All Top and High Priority Restoration work to protect SAR/SCC is underway or complete & being monitored
 - Remaining Restoration work will continue as per Draft CMP.
 - 3 Draft Trail Concept Plans that comply with Guidelines, enhance protection of features & improve accessibility - for review and comment:
 1. DRAFT “Enhanced As Is” Trail Concept Plan
 2. DRAFT “Partial Improved Connectivity” Trail Concept Plan
 3. DRAFT “Enhanced Connectivity” Trail Concept Plan
- Adaptive Management and Monitoring Framework
- Continued Community Engagement



Next Steps

September 7	LAC Review of Draft Phase II CMP
September 14	Comments on Draft Phase II CMP due from EEPAC, ACCAC, LAC
End of September	Revised Draft Phase II CMP <ul style="list-style-type: none"> • Provided to LAC for endorsement
October 18	Community Open House #2
End of October	Final Phase II CMP Report
November	Presentation to Planning and Environment Committee

