

8TH REPORT OF THE
TREES AND FORESTS ADVISORY COMMITTEE

Meeting held on July 26, 2017, commencing at 12:20 PM, in Committee Room #4, Second Floor, London City Hall.

PRESENT: R. Mannella (Chair), T. Khan, C. Linton, G. Mitchell, N. St. Amour and R. Walker and J. Martin (Secretary).

ABSENT: C. Haindle and J. Kogelheide.

ALSO PRESENT: A. Beaton, J. Ramsay and J. Spence.

I. CALL TO ORDER

1. Disclosures of Pecuniary Interest

That it BE NOTED that no pecuniary interests were disclosed.

II. ORGANIZATIONAL MATTERS

2. Election of Vice-Chair for the Term Ending November 2017

That it BE NOTED that the Trees and Forests Advisory Committee (TFAC) deferred the election of a Vice Chair to the next meeting of the TFAC.

III. SCHEDULED ITEMS

None.

IV. CONSENT ITEMS

3. 7th Report of the Trees and Forests Advisory Committee

That it BE NOTED that the 7th Report of the Trees and Forests Advisory Committee, from its meeting held on June 28, 2017, was received.

V. SUB-COMMITTEES & WORKING GROUPS

4. Allergens, Climate Change & Invasives Working Group

That it BE NOTED that a verbal update from N. St. Amour, on behalf of the Allergens, Climate Change & Invasives Working Group, was received.

5. Dingman Creek Objective

That it BE NOTED that no update was received.

VI. ITEMS FOR DISCUSSION

6. Notice of Study Commencement - Clarke Road Widening from the Veterans Memorial Parkway Extension to Fanshawe Park Road East, City of London Municipal Class Environment Assessment Study

That it BE NOTED that the Notice from A. Spahiu, Transportation Design Engineer, with respect to the Clarke Road Widening from the Veterans Memorial Parkway Extension to Fanshawe Park Road East, City of London, Class EA Study, was received.

VII. DEFERRED MATTERS/ADDITIONAL BUSINESS

7. Tree Planting under Hydro Lines

That the following actions be taken with respect to tree planting under hydro lines:

- a) the Civic Administration BE REQUESTED to make a presentation to the Trees and Forests Advisory Committee on the site plan approval process for tree planting and landscape plans;
- b) the Civic Administration BE REQUESTED to consider incorporating the “Planting Under or Around Power Lines and Electrical Equipment Standards”, produced by the Electrical Safety Authority, to ensure the right trees are planted in the right spots with respect to tree planting under and around hydro lines;
- c) a working group of appropriate stakeholders including members of the Trees and Forests Advisory Committee BE ESTABLISHED to review and report back with respect to tree planting processes;

it being noted that the attached presentation from T. Arnos, Sustainability and Environment Supervisor, London Hydro, with respect to tree planting under hydro lines, was received.

8. Plastic Sleeves on Trees

That it BE NOTED that discussion with respect to plastic sleeves on trees was deferred to a future meeting of the Trees and Forests Advisory Committee.

VIII. ADJOURNMENT

The meeting adjourned at 1:32 PM.

NEXT MEETING DATE: August 30, 2017

Trees and Powerlines 20170726



What do you value most?

- Number 1 – You 
- Number 2 – Others 
- Number 3 – Environment 
- Number 4 – Property (yours and others) 



DANGER!
"ELECTRIC CURRENT CAN KILL."



A SAFETY MESSAGE FROM HARRY HAZARD

If you walked away from your last electrical shock...
CONSIDER YOURSELF LUCKY... SOME DON'T!
Work safely with electricity – don't depend on luck.

EMERGENCY NUMBERS

- 400 Low-voltage power
- 300 Medium-voltage
- 200 High-voltage
- 50 Electrical fire
- 20 Electrical fire (outlet)
- 10 Electrical fire (outlet)
- 8 Fire alarm
- 5 Fire alarm
- 1 Fire alarm

SAFETY SOLUTIONS

DANGER

Electrical hazard Authorized personnel only

CALL 911 EMERGENCY







#ADAM

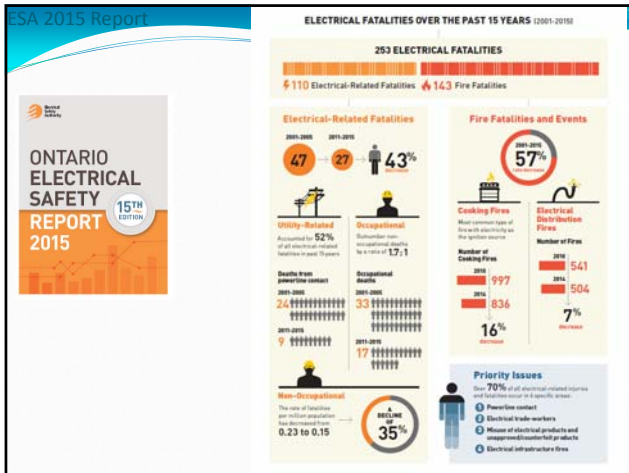


Non-occupational Electrical Contact Deaths 2000 to 2009 ESA

EQUIPMENT Used	DEATHS
Vehicle	4
Wiring	4
Lamp, Trouble Light	3
Flagpole	2
Balloon	1
Clock	1
Electric Cord	1
Handglider	1
Ladder	1
Lawnmower	1
Pipe	1
Plumbing	1
Pole	1
Pump	1
Tree Trimmer	1
Not available or unknown	6
10 year TOTAL	30

Power Line Deaths 12





POWERLINE SAFETY

**ALWAYS LOOK UP AND LOOK OUT!
 ALWAYS MAINTAIN A SAFE DISTANCE - 10 feet or 3 meters**

Stormy Weather

LOOK UP LOOK OUT WHEN STORMY WEATHER STRIKES

Every year Ontario hears reports of storm damage across the province. Reports of downed powerlines, power outages and floods fill the news, what should homeowners know in the event that stormy weather strikes?

Landscaping & Tree Trimming Safety

No part of a felled installation can be assumed safe, not even the main breaker. Before the equipment is tested or worked on, all power should be disconnected at the service panel with the main switch being left in the "OFF" position and lock has been obtained. In the event that flood water has risen above outlets, covers power cords, or is near the service panel contact your Local Distribution Company to disconnect power to your home. Once power has been turned off or disconnected a licensed electrical contractor should be contacted to determine if electrical equipment (wires, plugs) need to be replaced.

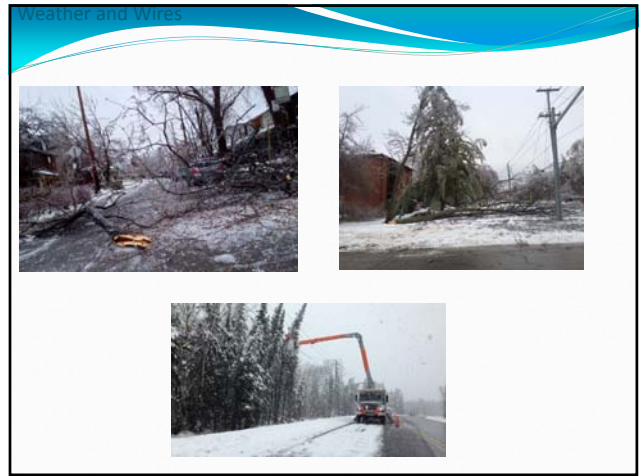
Do not plug in or attempt to use electrical appliances that have been wet until they have been checked or serviced by an electrician or service agency. Ask your electrician, or contact the manufacturer or dealer for the nearest service location.

Electrical Safety Authority, Caution Ontario, as
 Hurricane Sandy Approaches... Oct 26, 2012

Stormy Weather

LOOK UP LOOK OUT WHEN STORMY WEATHER STRIKES

Find the overhead powerline hazards around your home by touching on the circles.



PLANTING UNDER OR AROUND POWERLINES & ELECTRICAL EQUIPMENT

Overhead Powerlines
Hydro Pole

7.6m (25ft)
4.5m (15ft)
7.6m (25ft)

Tall Zone
Medium Zone
Low Zone

PLANTING UNDER OR AROUND POWERLINES & ELECTRICAL EQUIPMENT

Appendix A: Plant Selection Index

Species	Plant Selection Index
Alder	High
Aspen	High
Bald Cypress	High
Basswood	High
Birch	High
Bur Oak	High
Canadian Red Pine	High
Eastern White Pine	High
European Larch	High
Green Ash	High
Jack Pine	High
Japanese Cedar	High
Japanese Maple	High
Juniper	High
Kentucky Coffin Tree	High
Loblolly Shortleaf Pine	High
Longleaf Pine	High
Norway Spruce	High
Osage	High
Pacific Douglas Fir	High
Pine	High
Red Pine	High
Red Spruce	High
Redwood	High
Sitka Spruce	High
White Pine	High
White Spruce	High
Yellow Birch	High
Yellow Pine	High
Yew	High
White Birch	Medium
White Oak	Medium
Black Oak	Medium
Black Cherry	Medium
Black Gum	Medium
Black Locust	Medium
Black Walnut	Medium
Black Willow	Medium
Blue Birch	Medium
Blue Spruce	Medium
Bur Oak	Medium
Canadian Red Pine	Medium
Eastern White Pine	Medium
European Larch	Medium
Green Ash	Medium
Jack Pine	Medium
Japanese Cedar	Medium
Japanese Maple	Medium
Juniper	Medium
Kentucky Coffin Tree	Medium
Loblolly Shortleaf Pine	Medium
Longleaf Pine	Medium
Norway Spruce	Medium
Osage	Medium
Pacific Douglas Fir	Medium
Pine	Medium
Red Pine	Medium
Red Spruce	Medium
Redwood	Medium
Sitka Spruce	Medium
White Pine	Medium
White Spruce	Medium
Yellow Birch	Medium
Yellow Pine	Medium
Yew	Medium
White Birch	Low
White Oak	Low
Black Oak	Low
Black Cherry	Low
Black Gum	Low
Black Locust	Low
Black Walnut	Low
Black Willow	Low
Blue Birch	Low
Blue Spruce	Low
Bur Oak	Low
Canadian Red Pine	Low
Eastern White Pine	Low
European Larch	Low
Green Ash	Low
Jack Pine	Low
Japanese Cedar	Low
Japanese Maple	Low
Juniper	Low
Kentucky Coffin Tree	Low
Loblolly Shortleaf Pine	Low
Longleaf Pine	Low
Norway Spruce	Low
Osage	Low
Pacific Douglas Fir	Low
Pine	Low
Red Pine	Low
Red Spruce	Low
Redwood	Low
Sitka Spruce	Low
White Pine	Low
White Spruce	Low
Yellow Birch	Low
Yellow Pine	Low
Yew	Low

Probability of Fire

Low Zone <4.5m

Medium Zone (4.5m - 7.5m)

Direct Cause: Norway Maple at 11 Evergreen Ave

KPIs

June 2017 Reliability Incident Summary

London Hydro

Category	Adverse Weather	Cause	Thunderstorm
Cost Minutes	871,677	Cost Affected	5,457

Location: Various locations in the City of London
Date & Time: Sunday, June 4, 2017 at 12:00
Weather Condition: Thunderstorm

At 3:23 am of June 4th, the City of London experienced a severe thunderstorm resulting in a high frequency and duration of outages. During the storm, one large surge contributed the most to Customer Minutes of Interruption and number of Customers Interrupted. A large tree came down on the 20052 circuit at Sweets Ave, affected 3,032 customers and resulted in \$51,388 Cost.

When the 20052 circuit breaker was closed to restore customers, the 20052 recloser opened and limited the interruption to 1,405 customer only. Tower Antenna and substation devices were utilized in order to locate the damaged section of the line and restore power to customers. The circuit breaker shows the multi-step customer restoration.

Time	17:00	17:15	18:15	19:30	20:30	21:30	22:00
Time	17:00	17:15	18:15	19:30	20:30	21:30	22:00
Cost (Minutes)	6,300	8,400	1,000	1,500	400	500	—
Cost (\$)	1,260	1,680	200	300	80	100	—
CMP	8,220	123,870	256,875	19,560	24,200	189,276	—

Figure 1: 20052 Tree Contact Figure 2: Outage Map During the Storm

Action Item	Department
Review the current Vegetation Management Plan	Operations, Alan T. (in progress)
Investigate Recloser/Breaker Coordination	Planning, Doug S.

June 2017 Page 1 of 2

Recent Planting Concerns

20170319 VMP

20170726 Wonderland South

Conclusion

- Wrong Tree in the Wrong Place (WTWP)
 - Increased Safety Risk
 - Reduced Productivity
 - Reduced Resiliency
 - Increased Demands on LDC
 - Increased Costs to Citizens
- Focus on
 - Electrical Safety Authority (ESA)
 - Proper Tree Planning and Planting